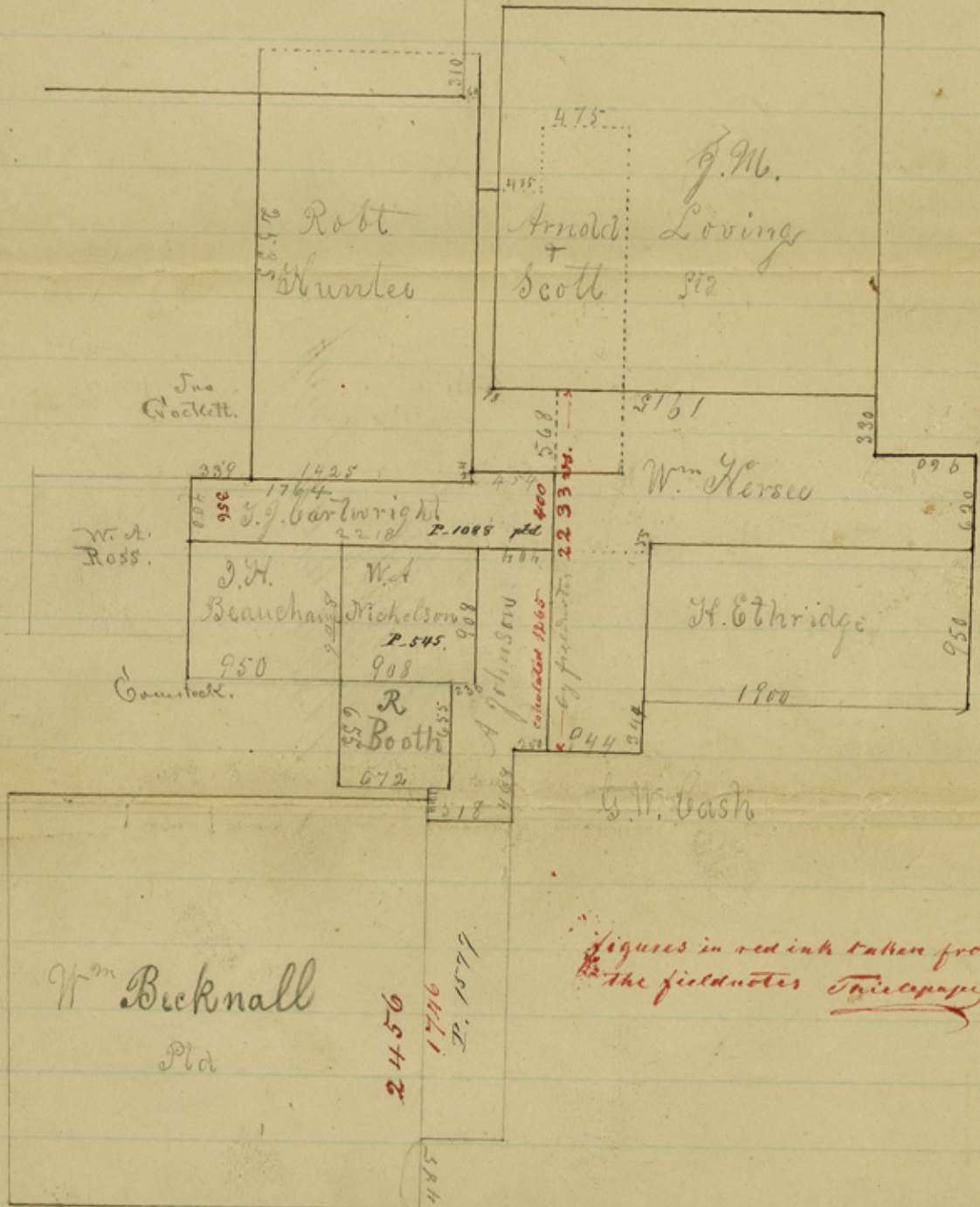


Wm Watson



figures in red ink taken from the field notes True copy

I do hereby Certify that the foregoing Plat is a correct representation of all the Surveys within therein on the ground, by actual measurement

A. Devereux
Surveyor
N. Co. 24

Filed March 27/77
J. H. [unclear]

counter 70583

1171

wise co. st. file # 3

Decatur W. Co. Ga.
March 23rd 77


J. J. Gross. Commissioner
Austin

Sir

You will find enclosed another sketch of surveys & tracts on Dry Creek W. Co. Ga. showing more definite their true positions relative to each other by actual measurement on the ground. I must admit an error made in my last plat forwarded sometime since, and since then I have made a careful survey of all therein mentioned tracing the lines & bands in accordance with the calls &c. I find that by running the J. M. Loving from its connecting point, which is the N. W. corner of the H. C. Thridge. North 950 rods & West 1300 rods runs entirely across the Arnold & Scott with the exception of 78 rods and its S. W. corner is only 568 rods North & 78 rods East from Arnold & Scott's S. W. corner as shown in said plat. There can be no mistake in this as the Arnold & Scott has clearly defined corners with bearings

To correspond, all of which I found with exception of its S.E. Corner which I could not positively define as the bearings were destroyed. I found also a conflict between the Robt Hunters & Wm Watson, which is contrary to all the maps. By running from Hunter's S.E. Cor (which is 44 vs South of Arnold & Scott's S.W. Cor) North passing 60 vs East of Watson's S.E. Cor. and thence me 310 vs North of Scid Cor as shown by plat, hence the two surveys last mentioned being farther North than was supposed, has partly caused the vacancy between the surveys on the South & Wm Becknell on the north.

I also find an error in the connecting point of W.A. Nicholson, a line running East from Nicholson's N.E. Cor will strike 55 vs South of the Ethridge, N.W. Cor. as shown by the dotted lines across the Hesse, and the distance across is 1348 vs. Nicholson's boundary lines are also short by 42 vs. The survey of Cardright Nicholson & Booth was actually made upon vacant land as no other survey can by no means cover the ground. The



counter 40585

Bicknell Can not Come any farther
North than its distance Calls,
neither Can the Surveys North
go any farther South as most
all of their Corners are well defin
ed. You will also find a Conflict
between Arnold & Scott & the Wm
Hershey. And the J. M. Loring
running East from its beginning
doe not reach the Cook & Schoel
lands by measurement.

Should this explanation be of
sufficient Satisfaction for the is
sue of the Patent asked please
forward the same to me as soon
as possible

A. Devereux
Surveyor Wile Co
24

file No. ~~31~~ 31. sketch.
Wise County.

Surveyors Sketch & Statement
 relative to the positions of Swamp
 tion survey (P. 475. P. 477) etc.

12 Miles N 70 W. of
 Decatur.

See file 43 Adevreaux's
 SK & explanation of SURS. 12 mi. N
 70° W. of Decatur. Dated 3/25/76.

Paid March 27/77

J. W. Moore,

This sketch is not satisfactory. —
 It is not far enough extended
 to show the consequences, which
 it will have on other surveys
 and how these are to be corrected.
 It gives the Hattron
 survey a wrong position and the
 surveyor has to show where the
 discrepancy lies; also it gives
 the Etheridge survey a wrong
 position and the surveyor has
 to show that its connection
 is erroneous. If the Ether-
 ridge survey is plotted correct
 the Horse and the Loving survey
 will conflict with the Cooke to
 Schoolland. March 15/78

Thielepage

counter 40587