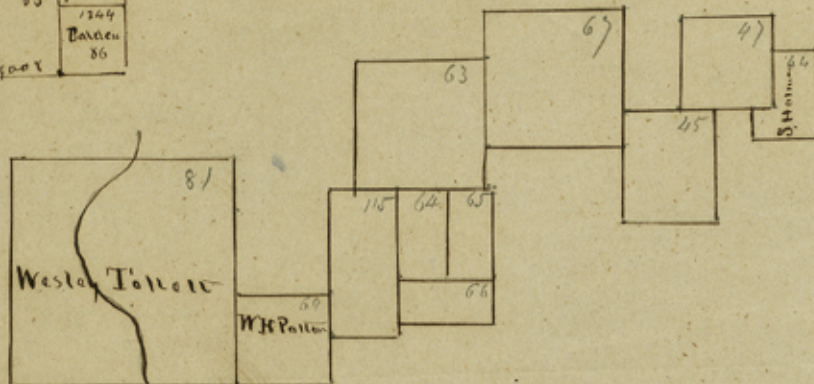
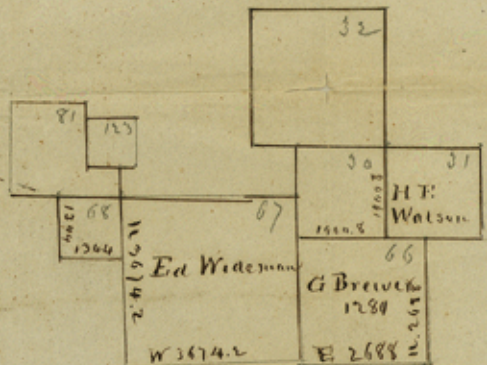


1444.1	68
1444.2	68
1444.3	68
1444.4	68
1444.5	68
1444.6	68
1444.7	68
1444.8	68
1444.9	68
1444.10	68
1444.11	68
1444.12	68
1444.13	68
1444.14	68
1444.15	68
1444.16	68
1444.17	68
1444.18	68
1444.19	68
1444.20	68



Lake Fork  
 $N 73^{\circ} W 148.00$



The above is a true sketch taken from the maps of this District  
 Nacogdoches, Oct 5/48  
 A. C. Nelson  
 Dist Surveyor  
 Dist Nacogdoches  
 #5  
 counter 40637

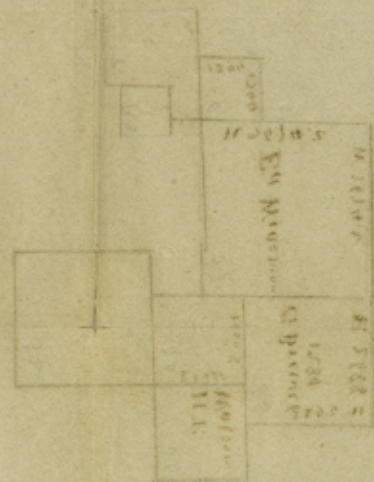
File #5 5.  
Nacogdoches Dis.

Sketch N. of Sabine near  
Lake-fork.

received October 16. 1848.

Plotted on map

Wood County



*[Faint handwritten notes, possibly including 'received', 'plotted', and other details.]*

counter 40638