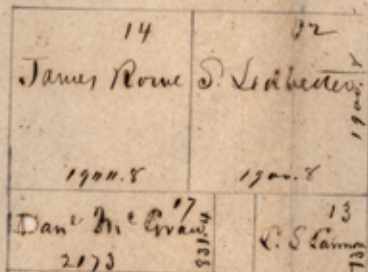


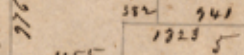
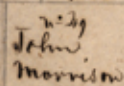
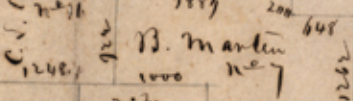
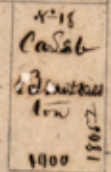
1852



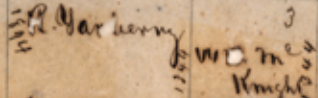
This is a correct representation of surveys connecting with that of

W. D. M<sup>e</sup> Knight

Survey No. 16 calls in its field notes for the N.W. corner of No. 13 it should be N.W. corner - of No. 7



1852  
1851  
1850  
1849  
1848  
1847  
1846  
1845  
1844  
1843  
1842  
1841  
1840  
1839  
1838  
1837  
1836  
1835  
1834  
1833  
1832  
1831  
1830  
1829  
1828  
1827  
1826  
1825  
1824  
1823  
1822  
1821  
1820  
1819  
1818  
1817  
1816  
1815  
1814  
1813  
1812  
1811  
1810  
1809  
1808  
1807  
1806  
1805  
1804  
1803  
1802  
1801  
1800



Academy  
March 1. 1852

W. D. M<sup>e</sup> Knight  
O.S.A.

1852  
1851  
1850  
1849  
1848  
1847  
1846  
1845  
1844  
1843  
1842  
1841  
1840  
1839  
1838  
1837  
1836  
1835  
1834  
1833  
1832  
1831  
1830  
1829  
1828  
1827  
1826  
1825  
1824  
1823  
1822  
1821  
1820  
1819  
1818  
1817  
1816  
1815  
1814  
1813  
1812  
1811  
1810  
1809  
1808  
1807  
1806  
1805  
1804  
1803  
1802  
1801  
1800

42004/1852

Sketches <sup>File #7</sup> <sub>1852</sub> File #9  
Nacogdoches Dist.

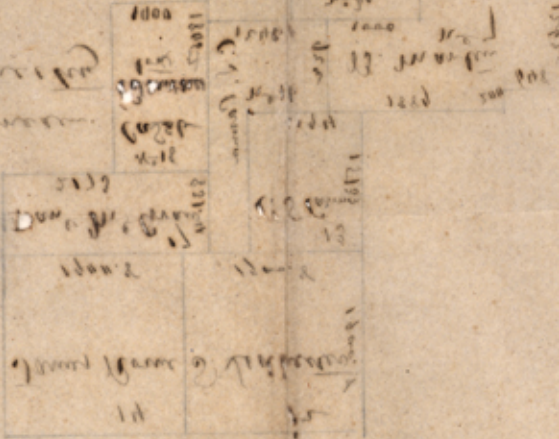
Wood County.  
East of Big Sandy creek  
Rec. March 13/52

11/10/1852  
1/10/1852

10/9/52  
1/10/1852

to the corner of ...  
for the purpose of ...  
ground ...  
...  
...  
...

A Nelson's sketch  
Dated March 1, 1852.



counter 70657