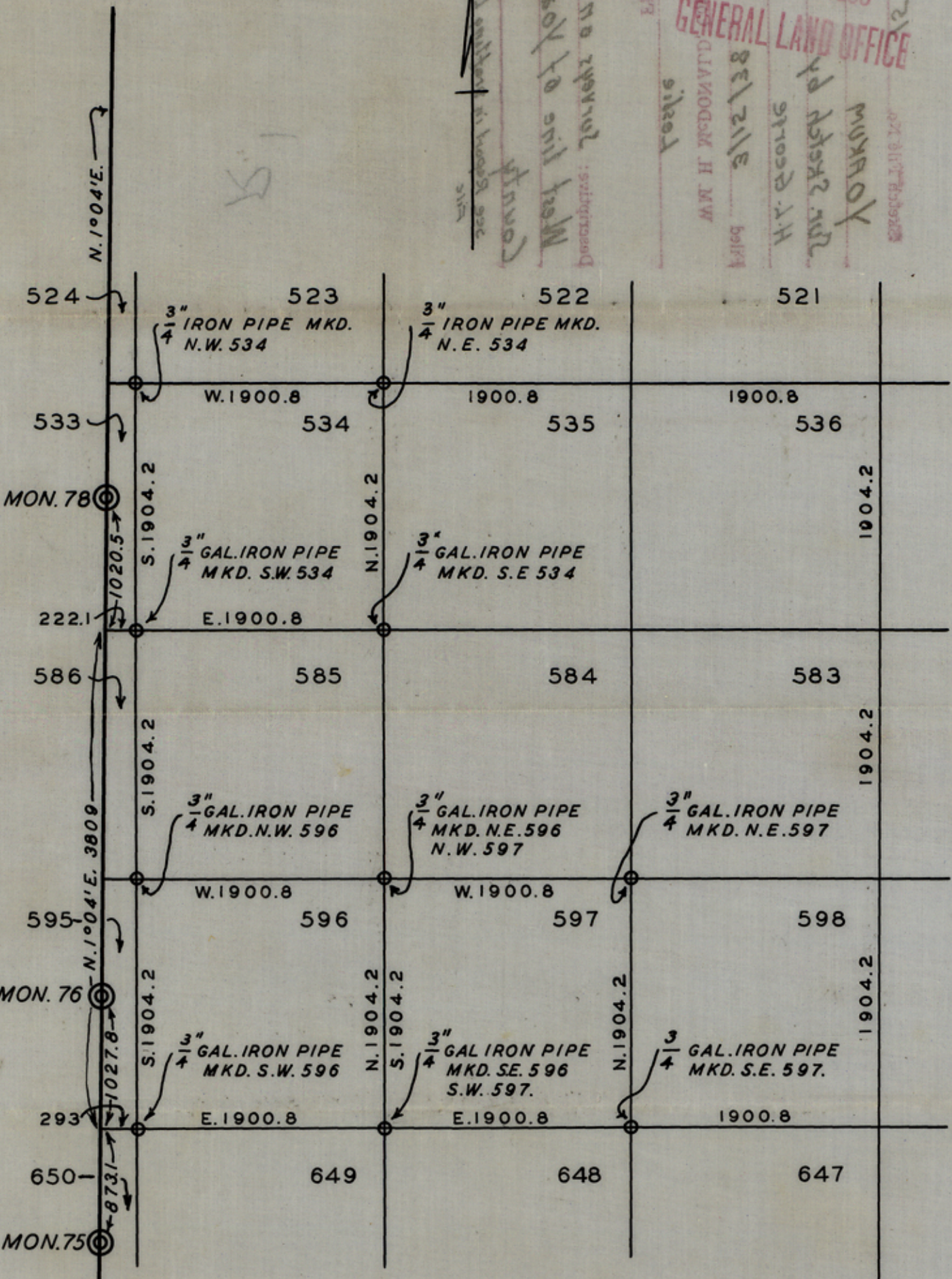


LANDS IN
YOAKUM CO. TEXAS

SCALE 1"=1 000 VS.
VAR. 12°10'E.

RECEIVED
MAR 15 1938
GENERAL LAND OFFICE
M. H. McDONALD
3/12/38
H. Y. SCOTT
YOAKUM

N
see book in
County
Map line of YOKUM
Description: 701422 011



NEW MEXICO
TEXAS

I. H. L. GEORGE, A LICENSED LAND SURVEYOR
OF TEXAS, DO HEREBY CERTIFY THAT THE
HEREON MAP CORRECTLY SHOWS THE RESULT
OF A SURVEY MADE BY ME ON THE GROUND.

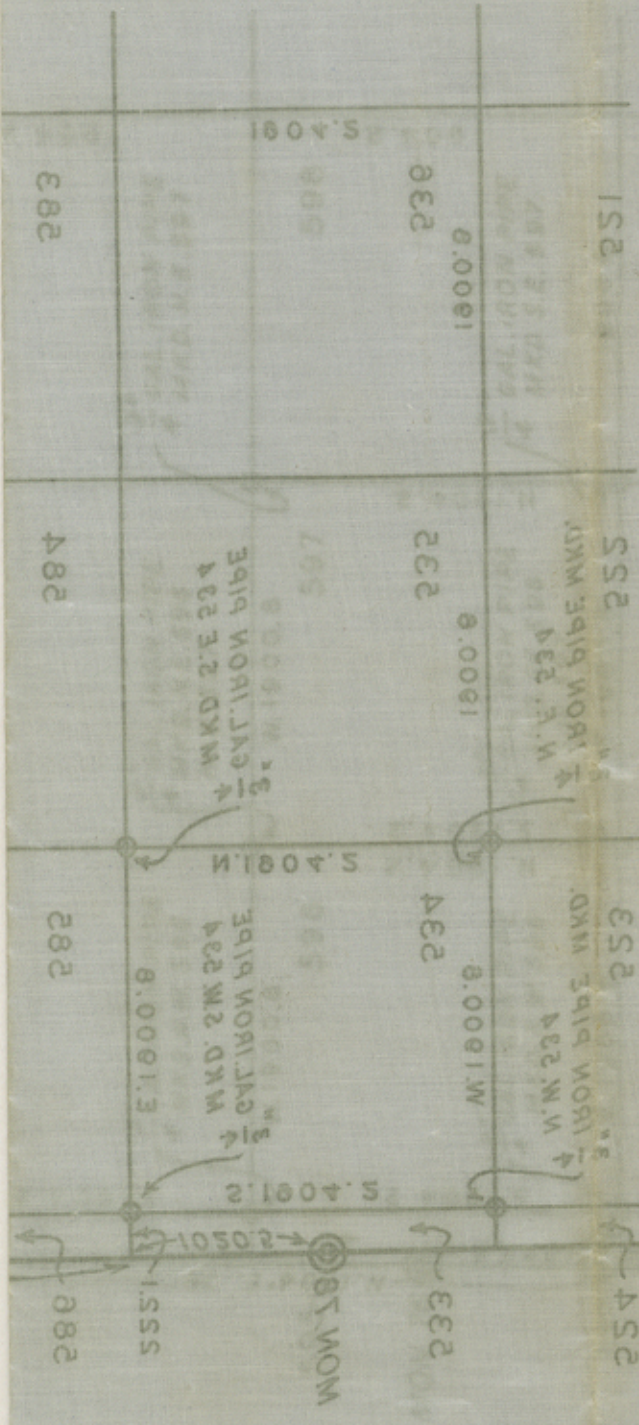
WITNESS MY HAND THIS 9 TH. DAY OF MARCH
1938.

I. H. L. George
LICENSED LAND SURVEYOR

R

6D-4

counter 40793



Sketch File No. 15

YOAKUM County

Sur. Sketch by
H. L. George

Filed 3/15/38 193

WM. H. McDONALD, Com'r

Leslie

File Clerk

Descriptive: Surveys on
West line of Yoakum
County

see Report in Drafting Letter
File

15.010.E

WITH SCALE 1" = 1000' AS OF THE DAY OF MARCH 1938

YOAKUM CO TEXAS

LANDS IN