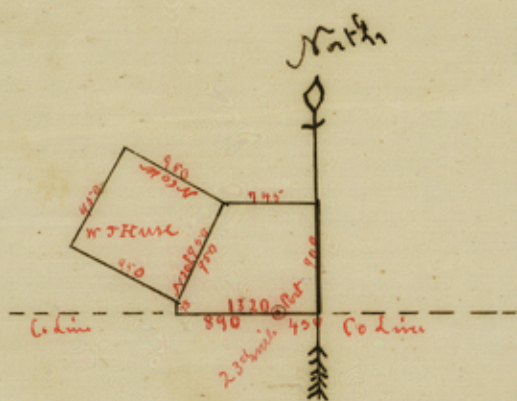


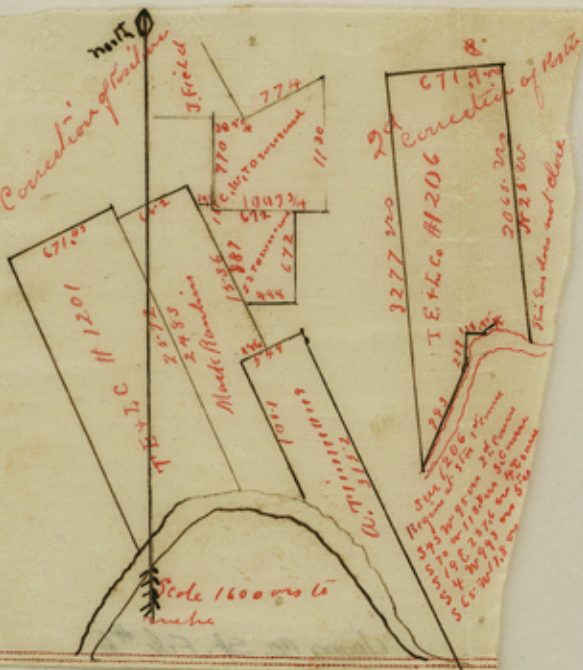
Scale 1600 vs to inch

S.W. cor of Ed Green is 750' north of 960' mark of S.E. cor of Ed Green line

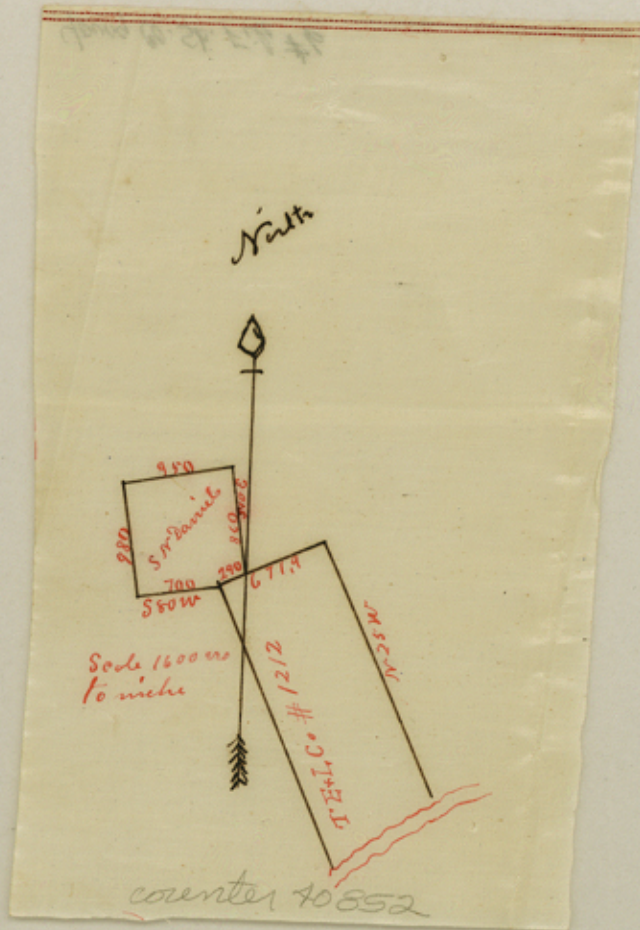


Scale 1600 vs to the inch

Handwritten vertical note on the right side of the map.

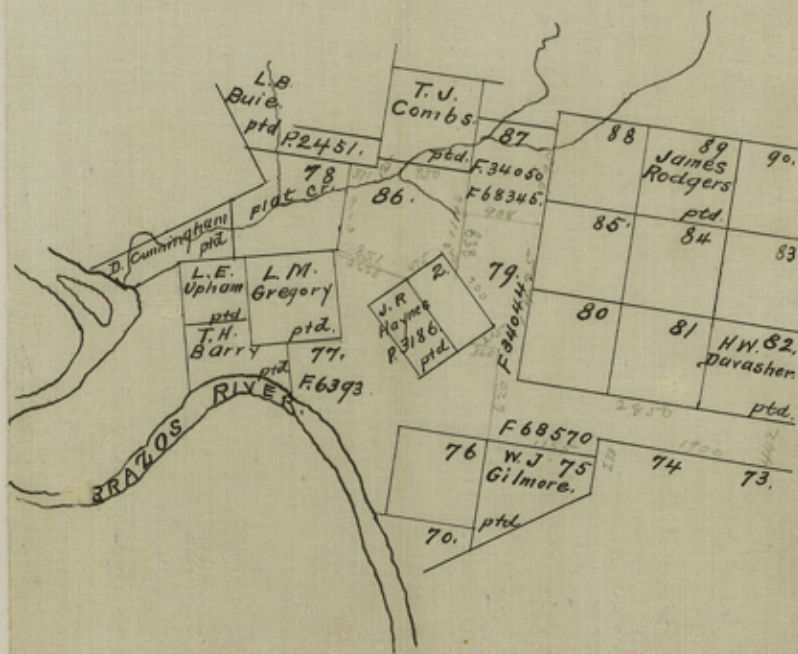


Scale 1600 vs to the inch



Scale 1600 vs to the inch

counter 70852



counter 40853

Map of Young
County

Recd Jan 12th 1857

counter 40854

6.

Unofficial and mutilated sketches
es & parts of sketches in
Young Co.

counter 40855

Young & Coine

July 20/88

Pisckney

counter 10856



Dear Mr Walsh.
Commissioner Gen Land Off
Austin Texas

counter 170857

File 7

Young County

Recd. March 6th 1858.

North-East corner

Sheet 9

Young County
Recd August 8/59

File 8

Young County
Filed Oct 9/58

counter 40858