

June 13, 1963

Mr. Fred P. Armstrong  
P. O. Box 653  
Pecos, Texas

Dear Mr. Armstrong:

Your field notes for Section 34, P.S.L., Block 76, Loving County, have been examined in connection with the J. E. Whiteside (SP-13904) and the T&E Ry. Co. surveys as constructed in accordance with the Court Decision on the J. E. Walling application.

Mr. Max A. Schumann, Jr. filed a sketch in 1961 revealing the construction of the T&E Ry. Co. Blocks using the excess prorated from the SW corner of Section 43, Block 55, Twp. 8. A copy of this sketch is enclosed.

Our legal department advises that the proper construction for P.S.L. Block 76 is to prorate the distance from the North line of T&E Block 55, Twp. 8 as located on the excess distance, and the South line of SP-13904.

The field notes you submitted are properly tied to the SP-13904 line; however, the other three sides of the section must be constructed as indicated in the preceding paragraph.

It is presumed that you will also write field notes for Section 35, P.S.L., Block 76 to conform to this construction.

Please call upon me if this office can be of further assistance.

Sincerely yours,

JERRY WALKER, COMMISSIONER

JJ/vss  
Encl.

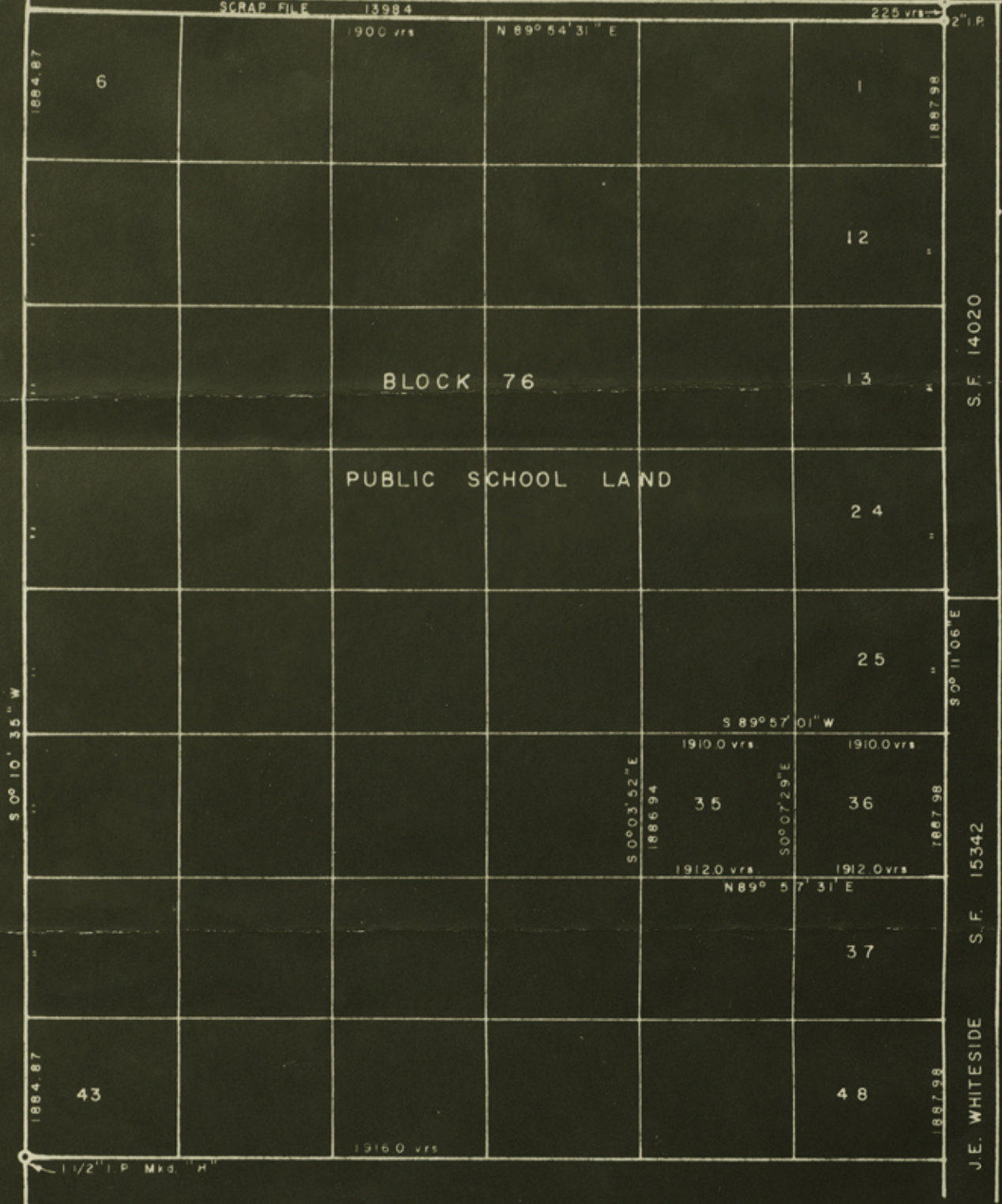
120099; 120100; SP-13904

counter 41451

Texas - New Mexico State Line

SCRAP FILE 13984

225 vrs. 2" I.P.



SURVEY PLAT

Sections 35 & 36 Bk. 76 P.S.L.

LOVING COUNTY

Surveyed By Me On The Ground, According To Law.

*Fred P. Armstrong*  
Lic. State Land Surveyor

Scale: 1" = 2000 Vrs.  
June 21, 1963

RECEIVED  
JUN 29 1963

General Land Office

*County 91452*

THE STATE OF TEXAS,  
COUNTY OF Loving

CORRECTED

Field Notes of a Survey of  
638.87 acres of land made for

Section: 35

Block: 76, Public School Land

Cert. No. Issued 19

Described as Being all of Section 35

Scale 1000 Varas per inch

Variation 12°E

Said survey is in Loving County, Texas, situated  
about 15 1/2 miles North 17° East of Mentone, the County  
Site of Loving County, Texas

Beginning at: an Iron Pipe for the Common Corner of Sections 25, 26, 35 and 36,  
Block 76, Public School Land, Loving County, Texas, for the NE Corner  
of Section 35 and the NE Corner of this survey;  
THENCE South 89° 57' 01" West 1910.0 varas to an Iron Pipe for  
the Common Corner of Sections 26, 27, 34 and 35, for the NW Corner of  
Section 35 and the NW Corner of this survey;  
THENCE South 0° 03' 52" East 1886.94 varas to an Iron Pipe set  
for the Common Corner of Sections 34, 35, 38 and 39, for the SW Corner  
of Section 35 and the SW Corner of this survey;  
THENCE North 89° 57' 31" East 1912.0 varas to an Iron Pipe for  
the Common Corner of Sections 35, 36, 37 and 38, for the SE Corner of  
Section 35 and the SE Corner of this survey;  
THENCE North 0° 07' 29" West 1887.46 varas -----

7

RECEIVED  
JUN 29 1963  
General Land Office

..... to the place of beginning.  
Bearings marked Francisco Granado Chain  
Surveyed June 17-20th, 19 63 Ramón Hernández Carriers

I, FRED P. ARMSTRONG, LICENSED STATE LAND SURVEYOR OF THE STATE OF TEXAS,  
do hereby certify that the foregoing described Survey was actually made by me on the ground, according to law, on  
the date and with the Chain Carriers aforesaid, duly qualified, and that all the Corners, Lines, Boundaries and Marks  
of the same, whether natural or artificial, are truly and correctly described and set forth in the foregoing Plat and  
Field Notes.

*Fred P. Armstrong*

Filed for Record in my office, the 28th day of June, 1963, at 4:30 o'clock P. M.  
and duly Recorded the 28th day of June, 19, 63, in Book 1, Page 208

*Edna Clayton*  
County Clerk, Loving County,  
TEXAS

counter 71953

File No. 6

LOVING County

SKETCH FILE

Filed June 29 1963

JERRY SADLER, Com'r

By V. E. [Signature]

Field Notes  
and Sketch  
Reflecting const.  
of Block 76,  
Public School Land  
By Fred P. Armstrong  
June 20, 1963

Note: Const. as per  
instructions  
from Land Office  
(Letter to Fred P.  
Armstrong 6-13-63)

Reel 320-5

June 13, 1963

Mr. Fred F. Armstrong  
P. O. Box 653  
Pecos, Texas

Dear Mr. Armstrong:

Your field notes for Section 36, P.S.L., Block 76, Loving County, have been examined in connection with the J. E. Whiteside (SF-13984) and the T&P Ry. Co. surveys as constructed in accordance with the Court Decision on the J. E. Walling application.

Mr. Max A. Schumann, Jr. filed a sketch in 1961 revealing the construction of the T&P Ry. Co. Blocks using the excess prorated from the SW corner of Section 43, Block 55, Tsp. 2. A copy of this sketch is enclosed.

Our legal department advises that the proper construction for P.S.L. Block 76 is to prorate the distance from the North line of T&P Block 55, Tsp. 2, as located on the excess distance, and the South line of SF-13984.

The field notes you submitted are properly tied to the SF-13984 line; however, the other three sides of the section must be constructed as indicated in the preceding paragraph.

It is presumed that you will also write field notes for Section 35, P.S.L., Block 76 to conform to this construction.

Please call upon us if this office can be of further assistance.

Sincerely yours,

JERRY SADLER, COMMISSIONER

JS/ves  
Encl.

120099; 120100; SF-13984