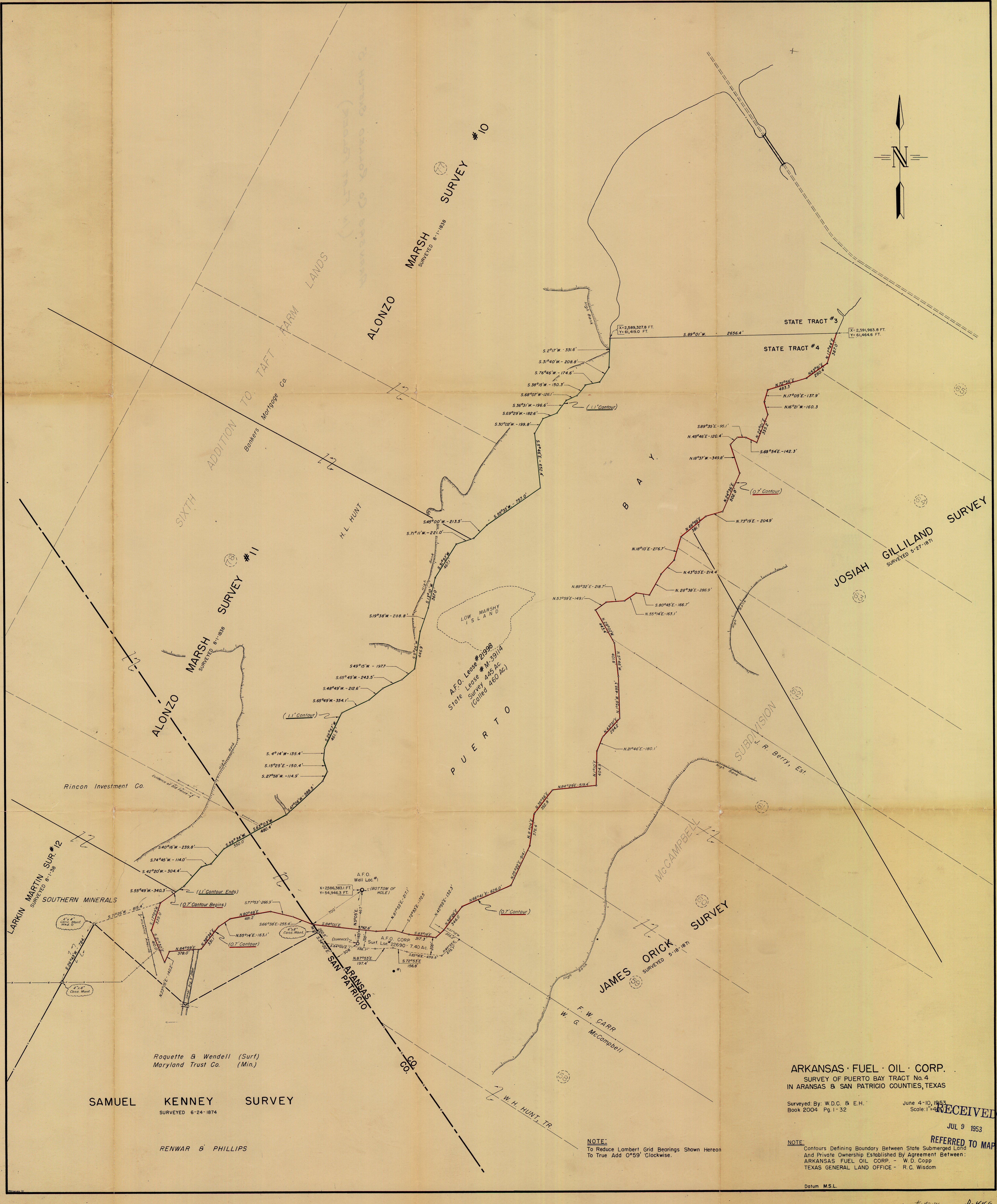
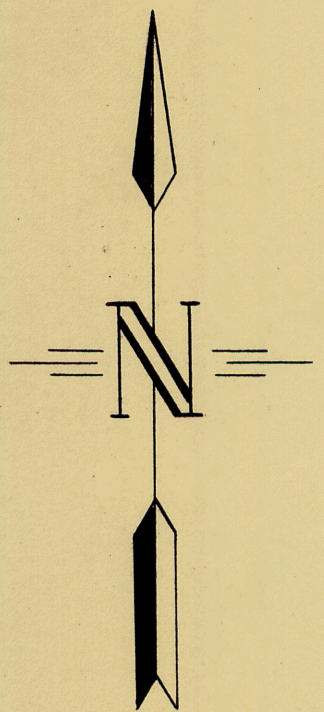


ARANSAS CO. ROLLED SKETCH NO. 5
—— (in flat folder) ——
SURVEY OF PUERTA BAY TRACT NUMBER 4
IN ARANSAS & SAN PATRICIO COUNTIES
SURVEYED BY ARKANSAS FUEL OIL CORP.

JUNE 4-10 1953
FILED IN G. L. O. JULY 9th. 1953
—————

enter 42075



SAMUEL KENNEY SURVEY
SURVEYED 6-24-1874

RENWAR & PHILLIPS

Roquette & Wendell (Surf)
Maryland Trust Co. (Min.)

ARKANSAS FUEL OIL CORP.
SURVEY OF PUERTO BAY TRACT No. 4
IN ARIZONA & SAN PATRICIO COUNTIES, TEXAS

Surveyed By: W.D.C. & E.H.
Book 2004 Pg. 1-32

June 4-10, 1953
Scale: 1"=40'

RECEIVED
JUL 9 1953

REFERRED TO MAP

NOTE:
To Reduce Lambert Grid Bearings Shown Hereon
To True Add 0°59' Clockwise.

NOTE:
Contours Defining Boundary Between State Submerged Land
And Private Ownership Established By Agreement Between:
ARKANSAS FUEL OIL CORP. - W.D. Copp
TEXAS GENERAL LAND OFFICE - R.C. Wisdom

Datum M.S.L.

counter 2006 D. 446

COGO 1

STARTING FILE 1

START

	1					83193.420	2634565.310
POINTS	1	TO	20	CLEARED			
START	1						
TRAV	1	SE	66 38 00.0	255.400		1000.000	1000.000
	2					898.705	1234.454
START	1					1000.000	1000.000
TRAV	1	SW	59 34 00.0	350.000		822.713	698.223
	2	SW	40 16 00.0	239.800		639.735	543.230
TRAV	3	SW	74 45 00.0	114.000		609.749	433.244
	4	SW	42 20 00.0	304.400		384.724	228.248
TRAV	5	SW	55 49 00.0	340.300		193.529	-53.263
	6	SW	17 29 00.0	339.000		-129.810	-155.109
TRAV	7	SE	21 30 00.0	410.000		-511.282	-4.843
	8	NE	23 05 00.0	140.200		-382.307	50.125
TRAV	9	NE	84 59 00.0	378.000		-349.252	426.677
	10	NE	38 34 00.0	331.100		-90.371	633.093
TRAV	11	NE	55 14 00.0	163.100		2.635	767.077
	12	NE	80 48 00.0	481.200		79.570	1242.087
TRAV	13	SE	77 53 00.0	266.900		23.547	1503.041
	14	SE	66 38 00.0	255.400		-77.749	1737.494
TRAV	15	NW	34 23 00.6	1305.925		1000.000	1000.000
INV	1						

AREA 1218807 SF 27.9800 ACRES in San Patricio Co.

counter 42077

July 23, 1953

Arkansas Fuel Oil Corporation
Shreveport 4,
Louisiana

Attention: Mr. S. D. Armstrong
Chief Civil Engineer

Dear Sir:

This is with reference to your letter of July 8, 1953, with which was enclosed three copies of your survey map of Tract No. 4, Puerto Bay.

We have examined the map and the construction carefully, and it would seem the boundaries of the tract, as set out on the map, are correct; however, in as much as M. A. 45220, in the name of George H. Goodwin, has been filed, claiming an alledged vacancy between the West shore of the Bay and the East boundary line of the James Downing and Alonzo Marsh Surveys, it will be necessary to withhold final approval until a decision is reached as to the existence or non-existence of the vacancy.

Sincerely yours,

BASCOM GILES, COMMISSIONER
OF THE GENERAL LAND OFFICE

WS:ds

"MA-45220 Void for failure to
submit deposit within time
allowed by law 10-2-53.
Bascom Giles"

counter 42078

File No. ARANSAS BL BK, No 5-

ARANSAS County

PUEBLO BAY TR 4

Filed July 9th, 1953

BASCOM GILES, Com'r

W.S.

File Clerk

IN FRONT FOLDER

D-446

ARKANSAS FUEL OIL CORPORATION

SHREVEPORT 4, LOUISIANA

July 8, 1953

Texas General Land Office
Austin, Texas

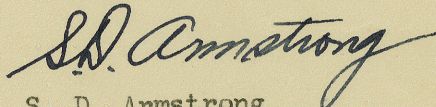
Attention: Mr. Dennis Wallace

Dear Sir:

Enclosed herewith are three copies of our survey map of Tract 4, Puerto Bay for your files and approval. The boundary shown thereon is as agreed upon by your Mr. R. C. Wisdom and our party chief, Mr. W. D. Copp. We have made no attempt to establish the adjoining surveys and the lines shown on the map are only approximate.

Should you care to discuss this survey more in detail, we will be glad to arrange a conference with you. Also, should you need additional copies of the map, please let us know and we will be glad to furnish them.

Very truly yours,



S. D. Armstrong
Chief Civil Engineer

SDA:cd
enc.

RECEIVED

JUL 9 1953

REFERRED TO MAP

counter 72079

File No ARANSAS Co RLD SK # 5

ARANSAS County

PUERTA BAY TR 4.

Filed July 9th, 1953

BASCOM GILES, Com'r

705

City Clerk

IN FLAT FOLDER.

RECEIVED

JUL 9 1953

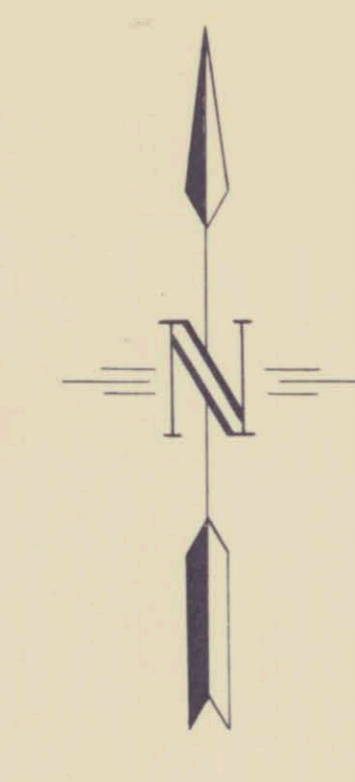
REFERRED TO MAP

Very truly yours,

[Handwritten signature]

Bascom Giles, Com'r

ARKANSAS CO ROLLED SKETCH
(IN FART FOLDER)



ALONZO MARSH SURVEY #10
SURVEYED 8-11-1838

ALONZO MARSH SURVEY #11
SURVEYED 8-11-1838

JOSIAH GILLILAND SURVEY
SURVEYED 5-27-1871

JAMES ORICK SURVEY
SURVEYED 5-18-1871

SAMUEL KENNEY SURVEY
SURVEYED 6-24-1874

RENWAR & PHILLIPS

A.F.O. Lease #2998
State Lease #M-39174
Survey 425 Ac.
(Called 460 Ac.)

ARIZONA SAN PATRICK CO

ARKANSAS FUEL OIL CORP.
SURVEY OF PUERTO BAY TRACT No. 4
IN ARKANSAS & SAN PATRICK COUNTIES, TEXAS

Surveyed By: W.D.C. & E.H. June 4-10, 1953
Book 2004 Pg. 1-32 Scale 1"=400'

NOTE:
To Reduce Lambert Grid Bearings Shown Hereon
To True Add 0°59' Clockwise.

NOTE:
Contours Defining Boundary Between State Submerged
And Private Ownership Established By Agreement Between:
ARKANSAS FUEL OIL CORP. - W.D. Copp
TEXAS GENERAL LAND OFFICE - R.C. Wisdom

Datum M.S.L.

RECEIVED
JUL 9 1953
RECEIVED TO MAP

No 1

counter 92030 2466

