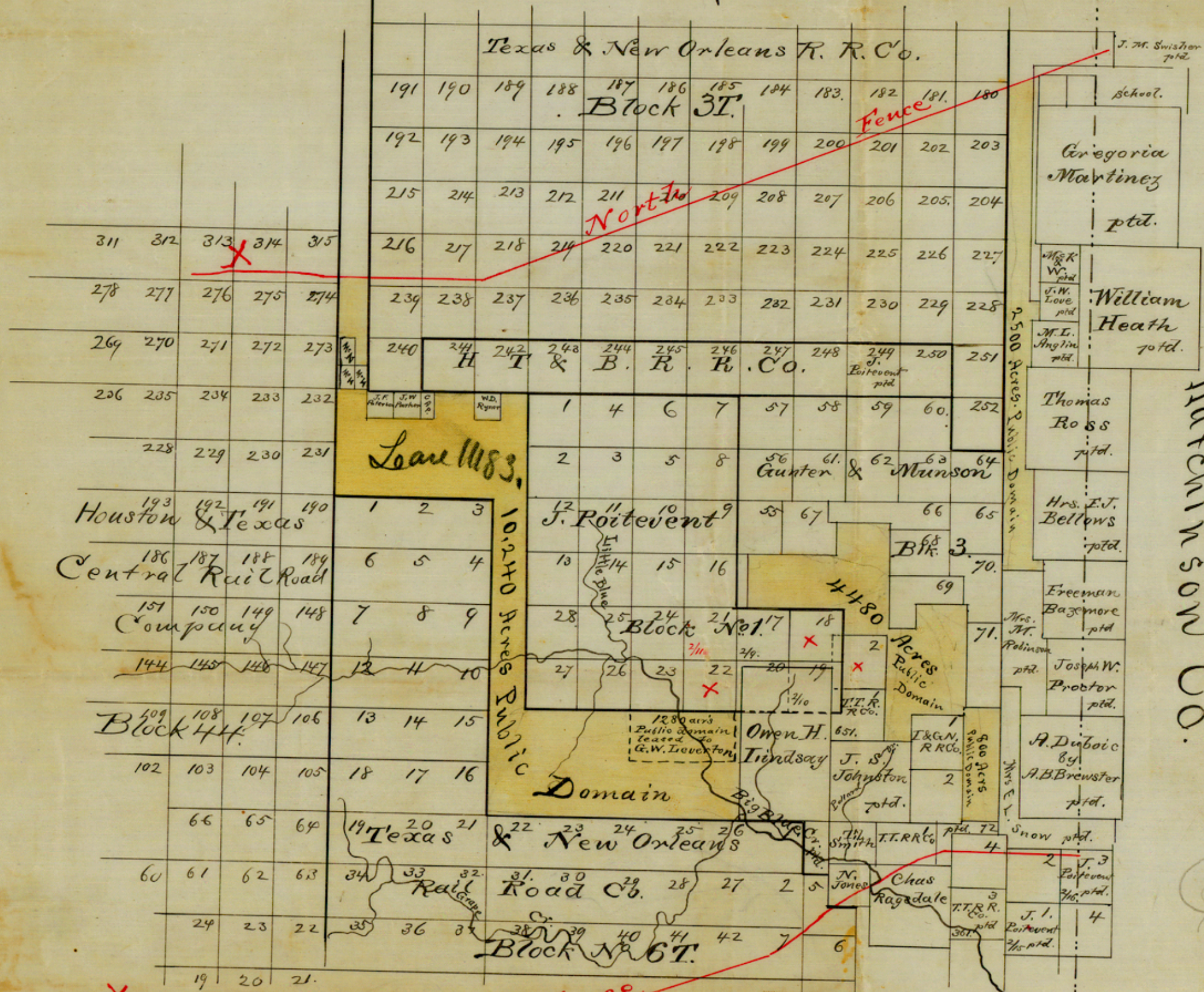


Moore Co.



Hutchinson Co.

4480
500
5280 a

Error
see new
sketch dated
June 17/95
by Roubey

M.G.

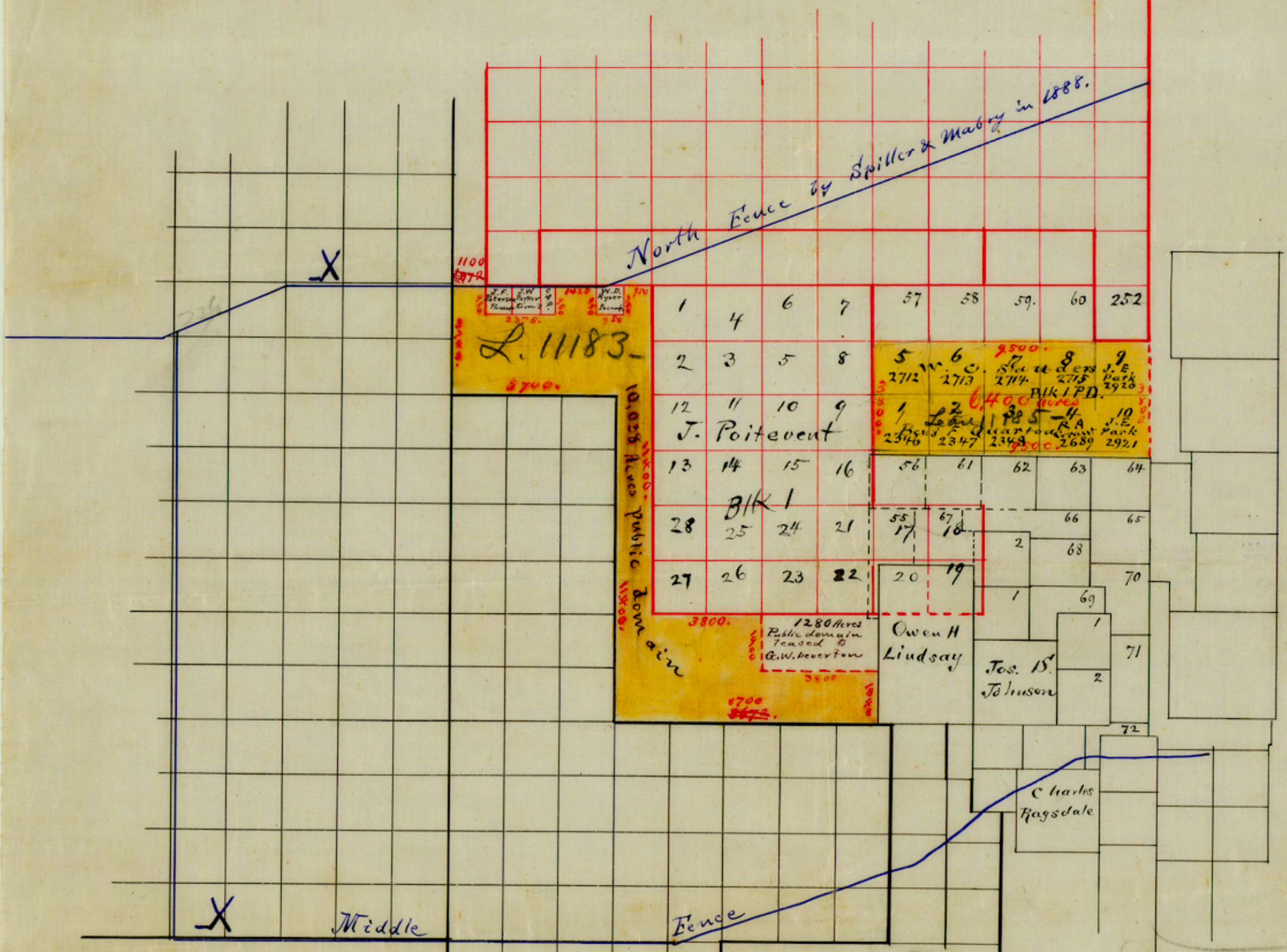
Potter Co.

copy of this sent to
W. Thomson, Denver, Colo.

Gen. Land Office
Austin Texas, May 21/95

Scale 40000 = 1 inch

Copied from Moore Co map
By E. von Rosenberg
Draftsman



(See original sketch ruled,
Potter Co. sketch no 1.)

See Sketch no. 2
Moore Co.

June 17/95 Correct area
& position of G.M.
Block 3
W. Thomson
For American Pastoral Co.