

Scale 2000 vs an inch.
 Dotted red line represents course of accompanying
 connecting lines.

J. C. Burbank
 Surveyor Motley Co.

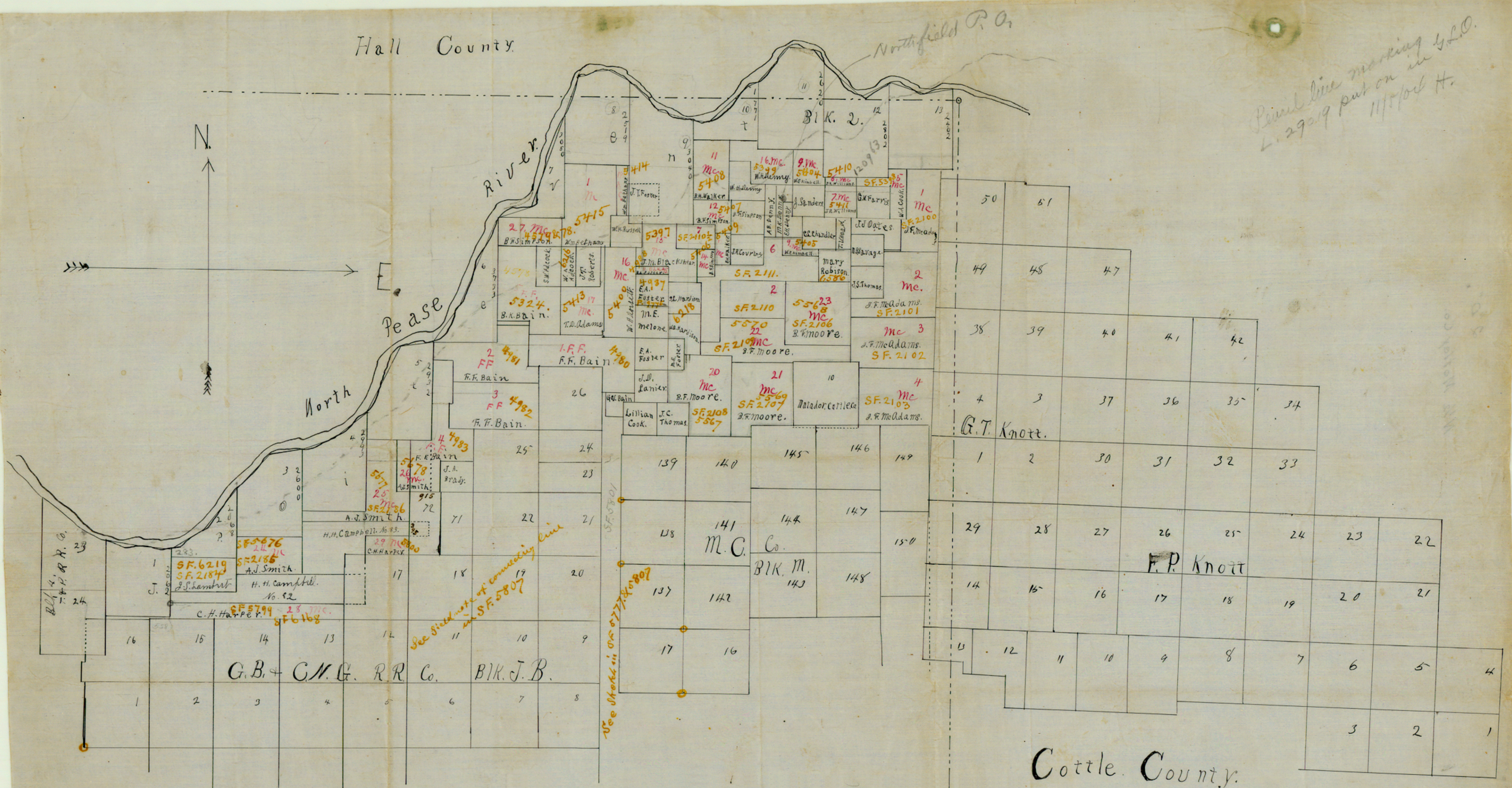
Filed June 22nd 1903

"Sketch D."
 Motley Co. Sketch file
 John J. Farrell
 Conveyance

Hall County

Northfield P.O.

Revised line marking
L. 29019 put on in 420.
11/15/04 H.



Supplement to connecting
line filed in June, 1903.
This 16 day of Oct. 1903.
J. E. Eubank
Surveyor Motley Co.

Sketch of N.E. Portion of Motley county showing relative position
of J. Poitevent Blk. 2, The F.P. & G.T. Knott, the Matador cattle Co. Blk M,
the G.B. & C.M.G. R.R. Co. Blk. J.B. and the position of the various homesteads
and school sites filling the vacancy between the above mentioned blocks.

Filed October 19th 1903.

Sketch "D".
Motley Co.
Sketch file

John J. Ferrell
Commissioner

Note:
See Surveyor Eubank's state Sur. Kansas letter
of explanation as to change of area SF 5799-5800 in SF 5799
1899 5/24/04

Cottle County.

The resurvey by M.S. Ragsdale, State Surveyor of blocks 3 & 4 J.P.R. Co.
and Blocks 18 & 2 J. Poitevent on Craigagn or North Pease river, is not in
accordance with the old original recognized common corner of sec 23 & 24
S. 20. 1 Blk 1, distant about 600 or. N.W. from mouth of Tom Bell creek,
thereby created a conflict between patented surveys no. 82 & 83 B.S. Camp
- blk 17 & 18 20 and surveys 17 & 22 blk 13, of B & C. M. R. Co.
S. 17 & 18 20 & 2082, hence his work should not be recognized.
See field notes of connecting line by J. E. Eubank, County
Motley Co. filed June 22/1903 (M.K.D.) hereto attached
See 16 Texas page 439 Williams vs Simpson, back for quantity of 64.0 acres, no more or less.
Nov 6/1903. O. van Dusen
Examining Draftsman