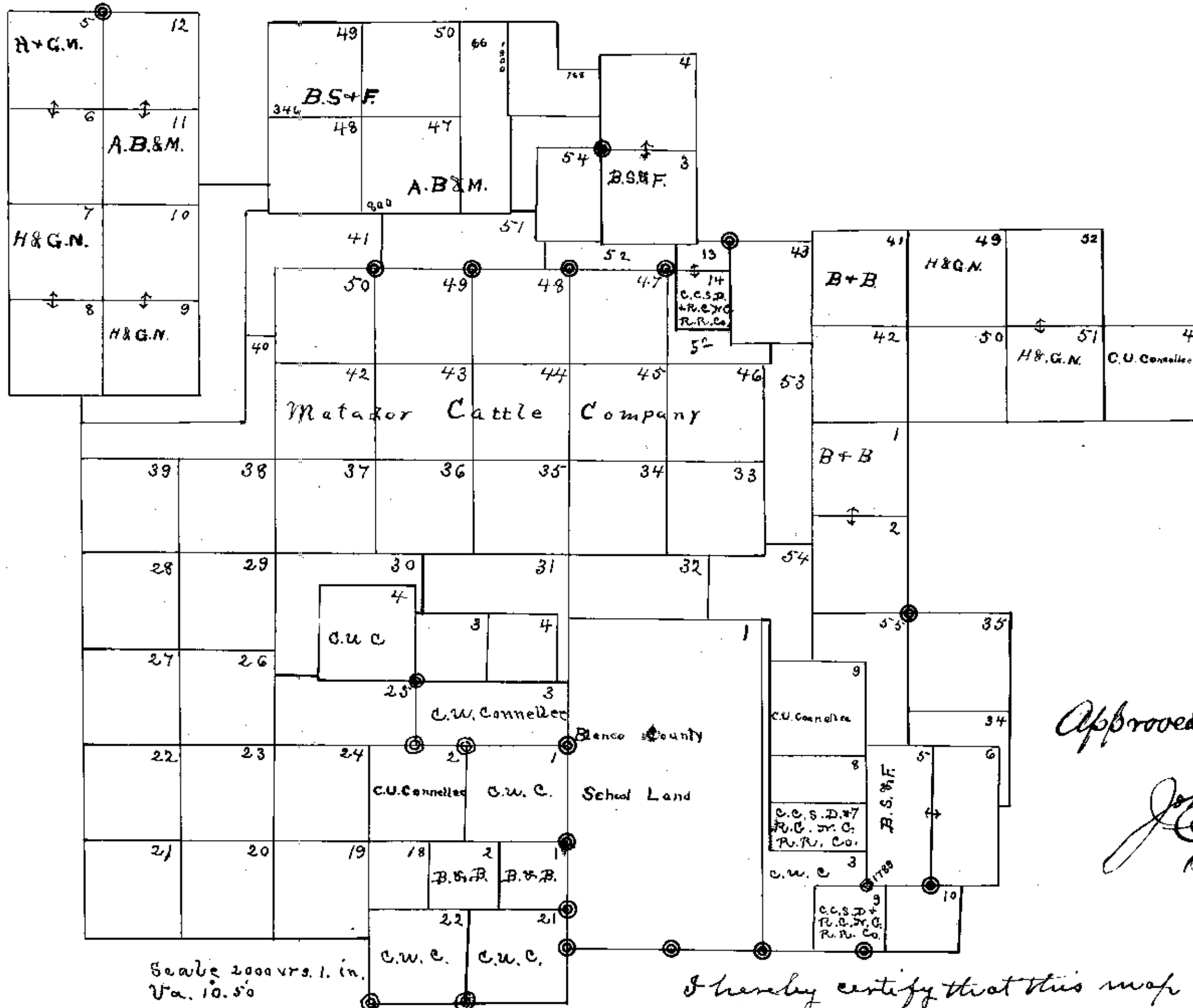


Motley County

Filed
In Motley Co. Sketch files



Scale 2000 vs. 1. in.
Va. 10.50

Approved, Dec. 18th 1905.

John J. Ferrell
Commissioner

Filed September 26th 1905.

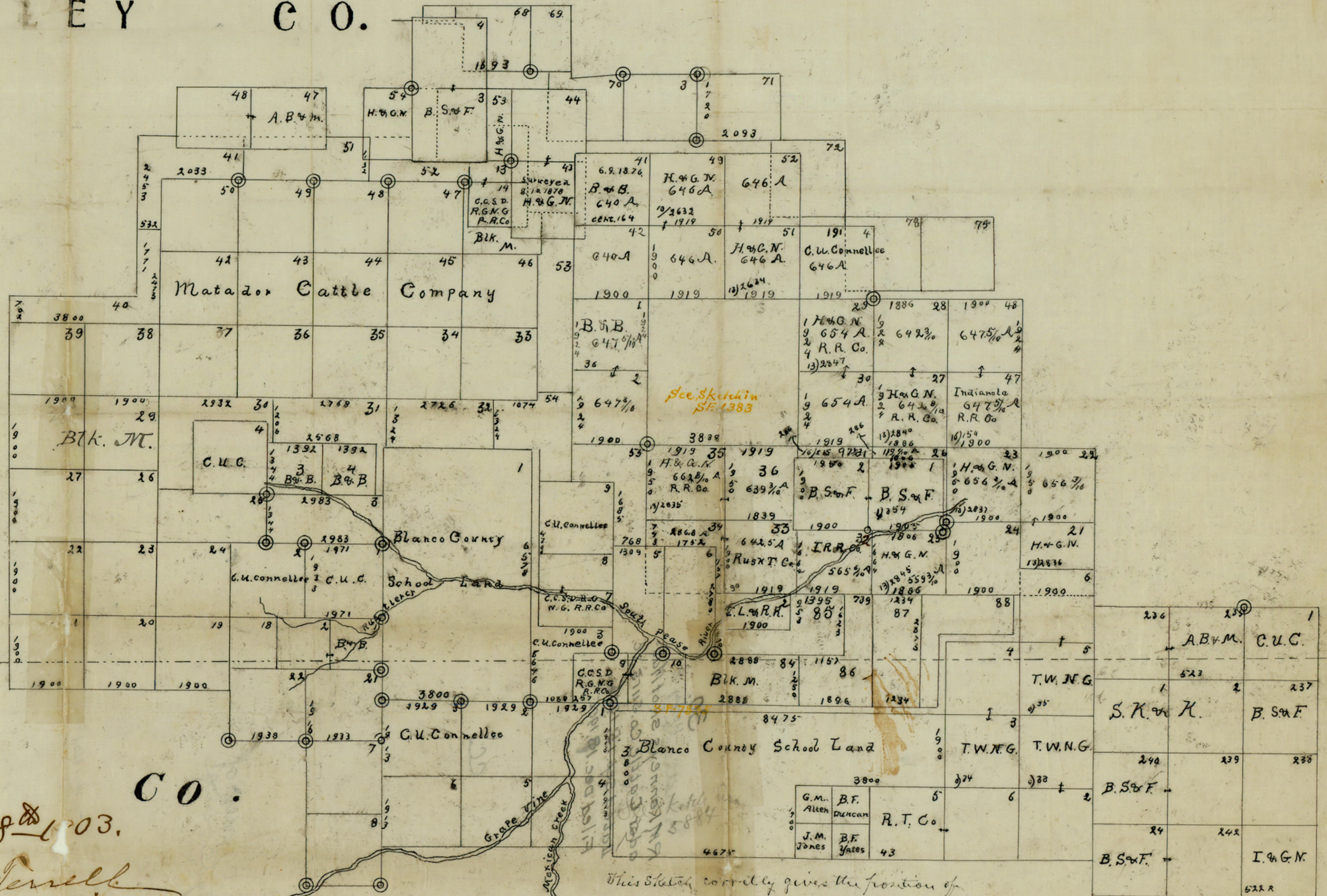
John J. Ferrell
Commissioner

I hereby certify that this map correctly
represents the lands as surveyed by me
from the old corners found on the ground.
R. W. Kerney State Sur.

Sept. 16, 1905.

MOTLEY C O.

Filed in Motley County Sketch files.



Dickens Co.

Filed April 8th 1903.

*John J. Carroll
Chief Clerk & Acting Commissioner*

This sketch correctly gives the position of surveys in S.W. part Motley County.
Scale 2000 ft. = 1 inch. - Van. 10.20 E.
R. M. Kearney State Surv.