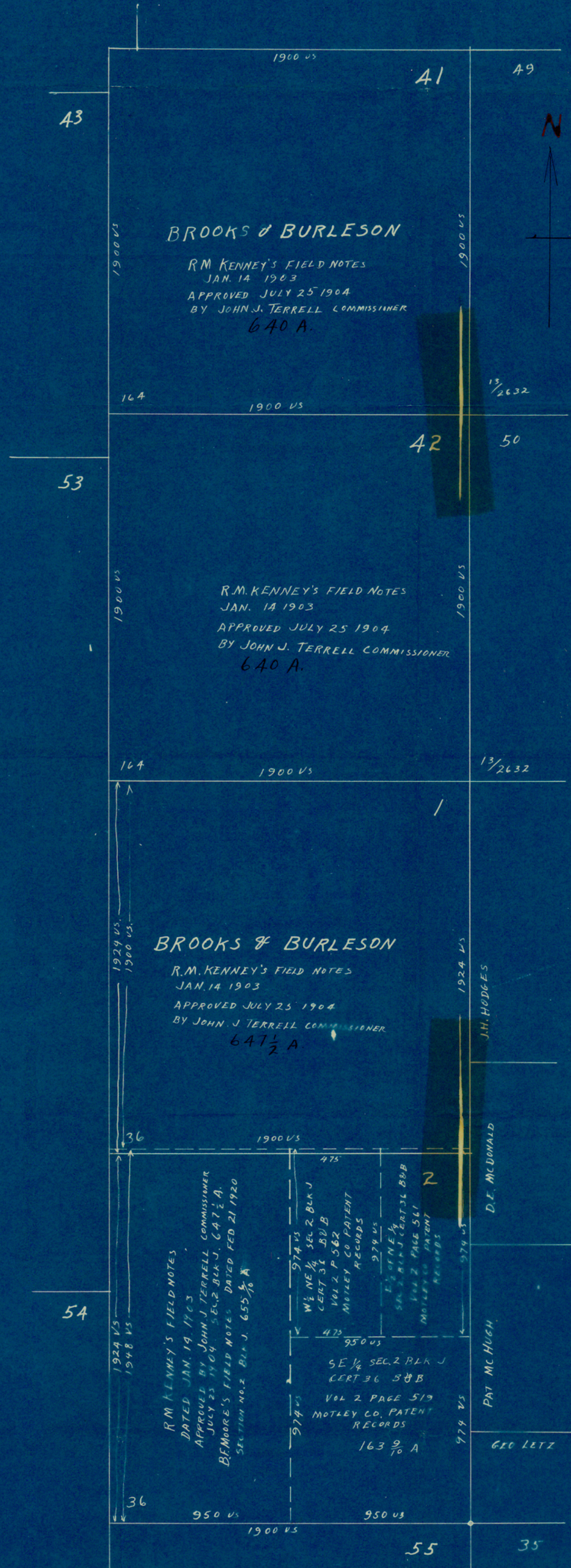


PLAT OF SECTIONS No. 1-2-41 & 42 B & B BLOCK J.  
 MOTLEY COUNTY TEXAS  
 SCALE 1 IN. = 400 VARAS



**BROOKS & BURLESON**

R.M. KENNEY'S FIELD NOTES  
 JAN. 14 1903  
 APPROVED JULY 25 1904  
 BY JOHN J. TERRELL COMMISSIONER  
 640 A.

R.M. KENNEY'S FIELD NOTES  
 JAN. 14 1903  
 APPROVED JULY 25 1904  
 BY JOHN J. TERRELL COMMISSIONER  
 640 A.

**BROOKS & BURLESON**

R.M. KENNEY'S FIELD NOTES  
 JAN. 14 1903  
 APPROVED JULY 25 1904  
 BY JOHN J. TERRELL COMMISSIONER  
 647 1/2 A.

R.M. KENNEY'S FIELD NOTES  
 DATED JAN. 14 1903  
 APPROVED BY JOHN J. TERRELL COMMISSIONER  
 JULY 25 1904  
 B.F. MOORE'S FIELD NOTES DATED FEB 21 1920  
 SECTION NO. 2 BLK J. 655 9/10 A

W 1/2 NE 1/4 SEC 2 BLK J  
 CERT 31 580 B  
 VOL 2 P 562  
 MOTLEY CO. PATENT  
 RECORDS

E 1/2 NE 1/4  
 SEC 2 BLK J CERT 36 B & B  
 VOL 2 PAGE 561  
 MOTLEY CO. PATENT  
 RECORDS

SE 1/4 SEC 2 BLK J  
 CERT 36 580 B  
 VOL 2 PAGE 519  
 MOTLEY CO. PATENT  
 RECORDS

163 9/10 A

CORRECTED  
 MARCH 23 1951  
*W.D. Newell*

WITNESS MY HAND AND SEAL OF OFFICE

THIS 23RD. DAY MARCH, A.D. 1951

*W.D. Newell*  
 LICENSED STATE LAND SURVEYOR  
 OF TEXAS

SKETCH FILE No. 34 (S)  
 COUNTY MOTLEY