

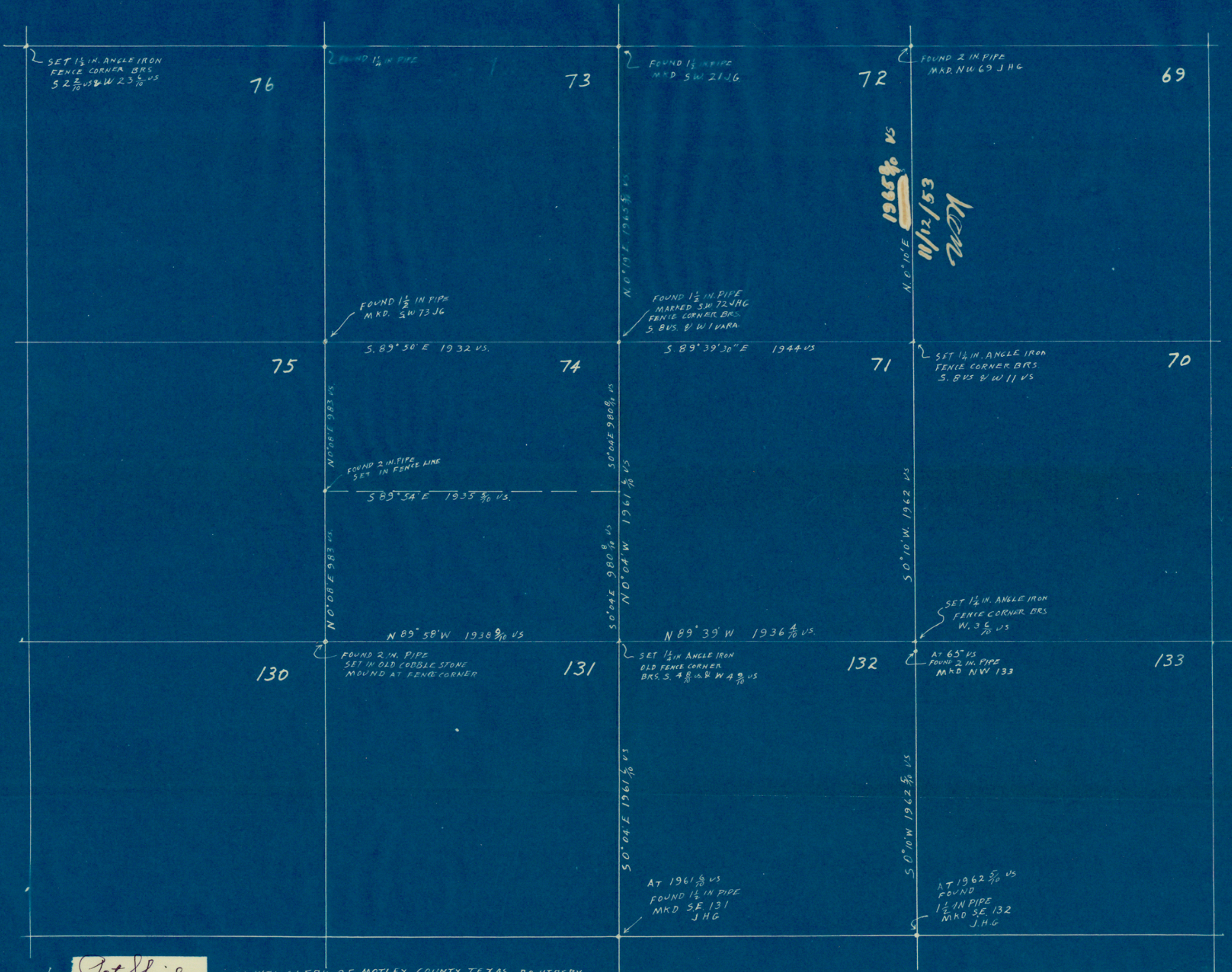
PLAT OF SECTIONS No. 71 & 74, JOHN GIBSON BLOCK MOTLEY COUNTY TEXAS

SCALE 1 IN. = 500 VARAS

VARIATION 11° 15' E

SURVEYED AUGUST 13-14-15, 1944 NOVEMBER 2-3, 1953

N



I, Pat Sheridan COUNTY CLERK OF MOTLEY COUNTY TEXAS DO HEREBY CERTIFY THAT A COPY OF THE FOREGOING PLAT IS FILED IN THE PLAT FILE OF THE SURVEYOR'S RECORDS OF MOTLEY COUNTY TEXAS

WITNESS MY HAND AND SEAL OF OFFICE THIS 17<sup>th</sup> DAY OF November A.D. 1953

Pat Sheridan  
COUNTY CLERK OF MOTLEY COUNTY TEXAS

WITNESS MY HAND AND SEAL OF OFFICE THIS 12<sup>TH</sup> DAY OF NOVEMBER, A.D. 1953

JHG  
LICENSED STATE LAND SURVEYOR OF TEXAS