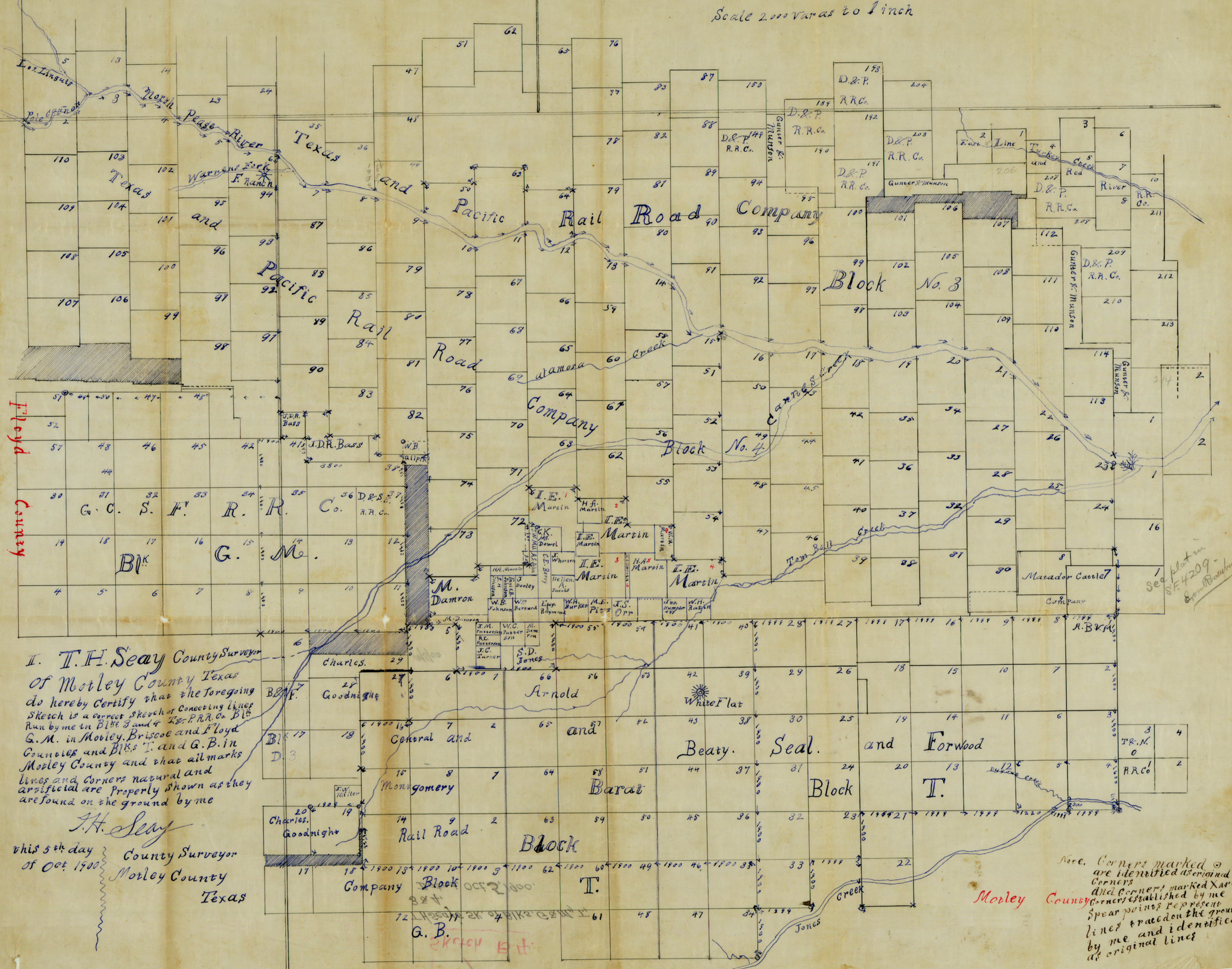


Mexican Monument  
Spring

Briscoe County

Hall County

Scale 2000 Varas to 1 inch



Floyd County

I. T. H. Seay County Surveyor  
of Motley County Texas  
do hereby certify that the foregoing  
Sketch is a correct sketch of Connecting Lines  
Run by me in Blks. 3 and 4 of G.C.S.F. R.R. Co. Blk.  
G.M. in Motley, Briscoe and Floyd  
Counties and Blks. T. and G.B. in  
Motley County and that all marks  
lines and corners natural and  
artificial are properly shown as they  
are found on the ground by me

I. T. H. Seay  
County Surveyor  
Motley County  
Texas

this 5th day  
of Oct. 1900

Note. Corners marked  $\odot$   
are identified as original  
corners and corners marked  $\times$  are  
corners established by me  
Spear points represent  
lines traced on the ground  
by me and identified  
as original lines

Worrell Co. ex. h. p. 2010. 11. 11.