

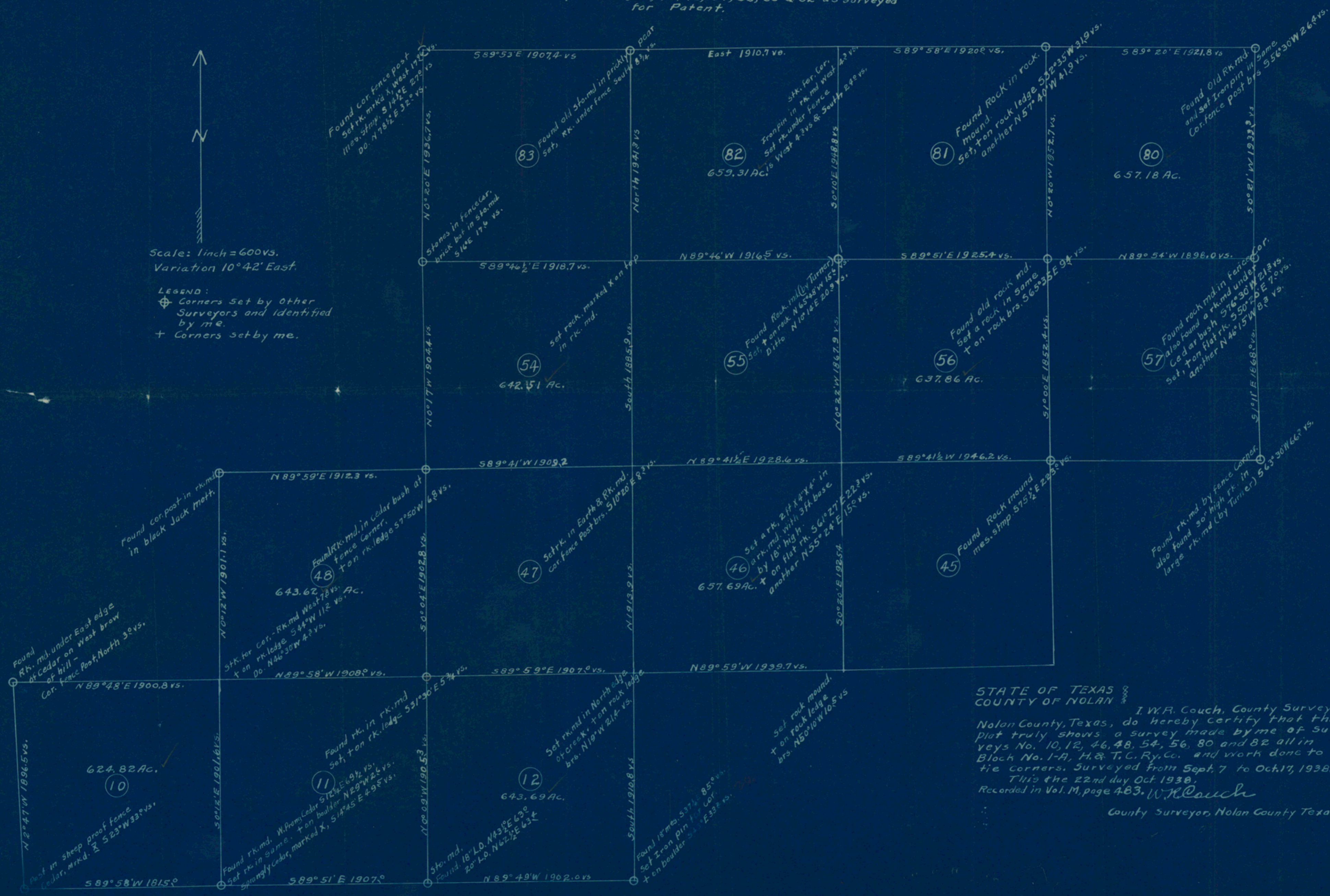
# PARRAMORE RANCH

IN BLOCK No. 1-A, H & T C Ry. Co.,  
IN NOLAN COUNTY, TEXAS.  
SHOWING  
Surveys No. 10, 12, 46, 48, 54, 56, 80 & 82 as surveyed  
for Patent.



Scale: 1 inch = 600 vs.  
Variation 10° 42' East.

LEGEND:  
⊕ Corners Set by Other Surveyors and identified by me.  
+ Corners set by me.



STATE OF TEXAS  
COUNTY OF NOLAN

I. W. R. Couch, County Surveyor,  
Nolan County, Texas, do hereby certify that this  
plat truly shows a survey made by me of Sur-  
veys No. 10, 12, 46, 48, 54, 56, 80 and 82 all in  
Block No. 1-A, H. & T. C. Ry. Co. and work done to  
tie corners, surveyed from Sept. 7 to Oct. 17, 1938.  
This the 22nd day Oct. 1938,  
Recorded in Vol. M, page 483. *W. R. Couch*  
County Surveyor, Nolan County Texas,

yy