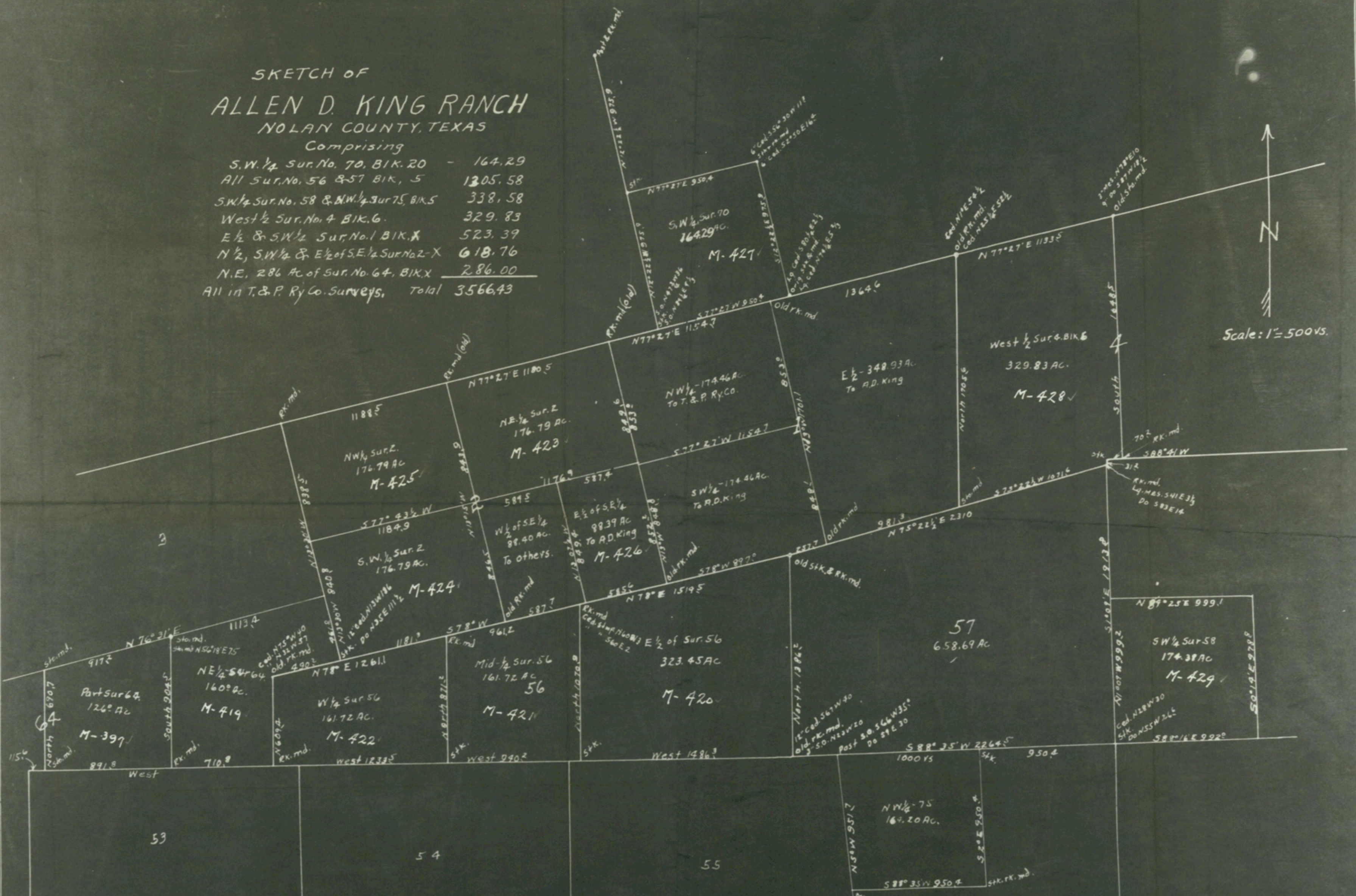


SKETCH OF  
**ALLEN D. KING RANCH**  
 NOLAN COUNTY, TEXAS

Comprising

S.W. 1/4 Sur. No. 70, BIK. 20	-	164.29
All Sur. No. 56 & 57 BIK. 5		1305.58
S.W. 1/4 Sur. No. 58 & N.W. 1/4 Sur. 75, BIK. 5		338.58
West 1/2 Sur. No. 4 BIK. 6		329.83
E 1/2 & S.W. 1/4 Sur. No. 1 BIK. X		523.39
N 1/2, S.W. 1/4 & E 1/2 of S.E. 1/4 Sur. No. 2-X		618.76
N.E. 286 Ac. of Sur. No. 64, BIK. X		286.00
All in T. & P. Ry Co. Surveys, Total		3566.43



I, W.R. Couch, County Surveyor, Nolan County, Texas,  
 do hereby certify that this plot truly shows work  
 done by me to survey the Allen D. King Ranch,  
 Surveyed April 8 to 14, 1937,  
 W.R. Couch  
 County Surveyor  
 Nolan County, Texas,