

MAP SHOWING PART OF BLOCK
1-A, H. & T. C. R. R. CO., NOLAN COUNTY,

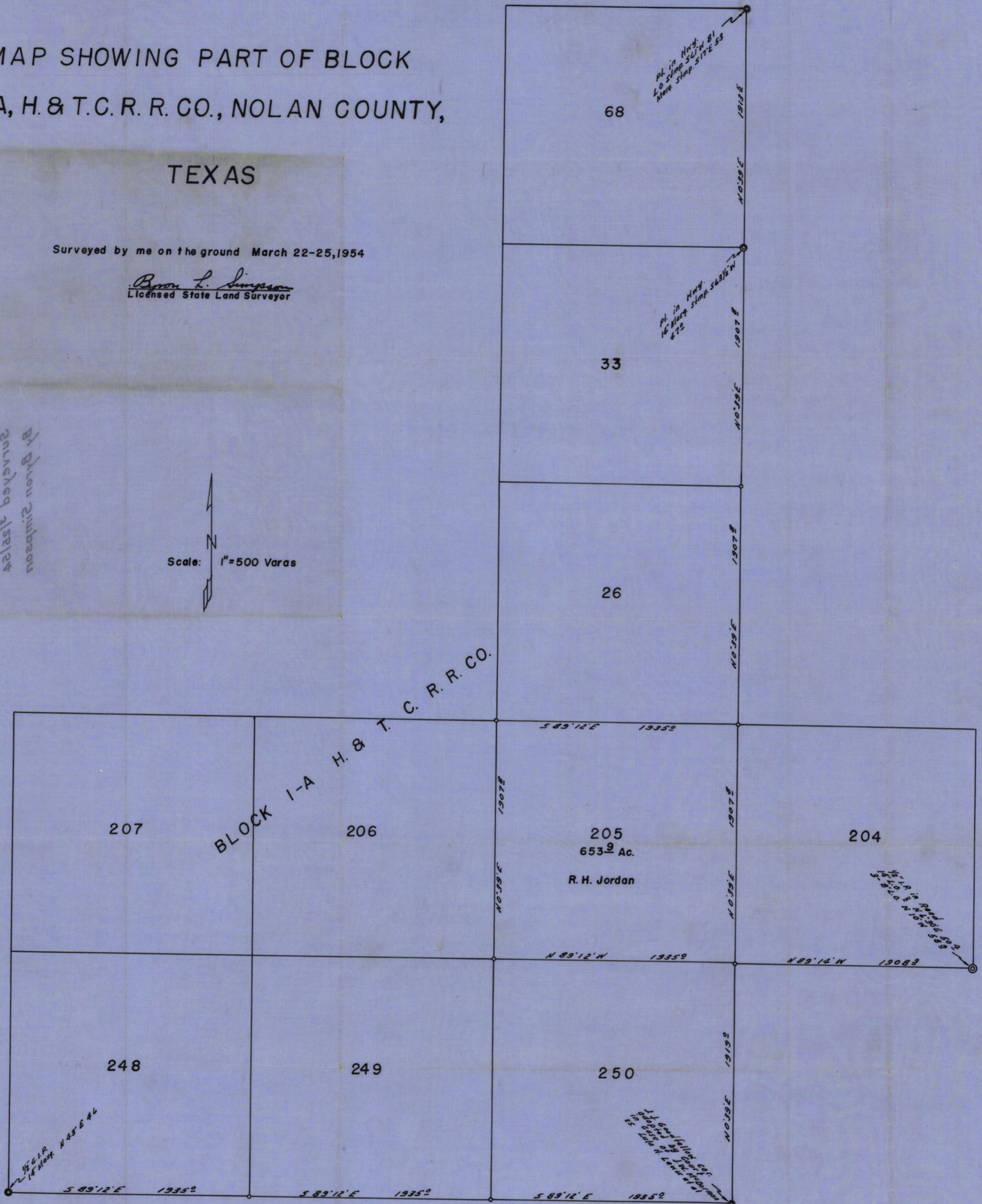
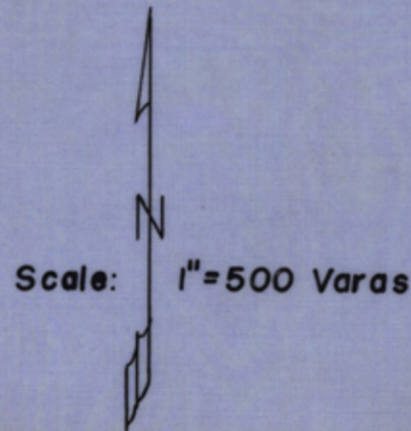
TEXAS

Surveyed by me on the ground March 22-25, 1954

Byron L. Simpson
Licensed State Land Surveyor

By Byron Simpson
surveyed 1/22/54
H. & T. C. R. R. CO.
Part of Bk. 1-A

RECORDED
INDEXED
FILED
NOLAN COUNTY TEXAS
APR 14 1954
BY CLERK



SKETCH FILES No. 20
COUNTY NOLAN
(1942)

RECEIVED
APR 14 1954
COUNTY CLERK

COUNTY # 4218

MAP SHOWING PART OF BLOCK
I-A, H. & T. C. R. R. CO., NOLAN COUNTY,

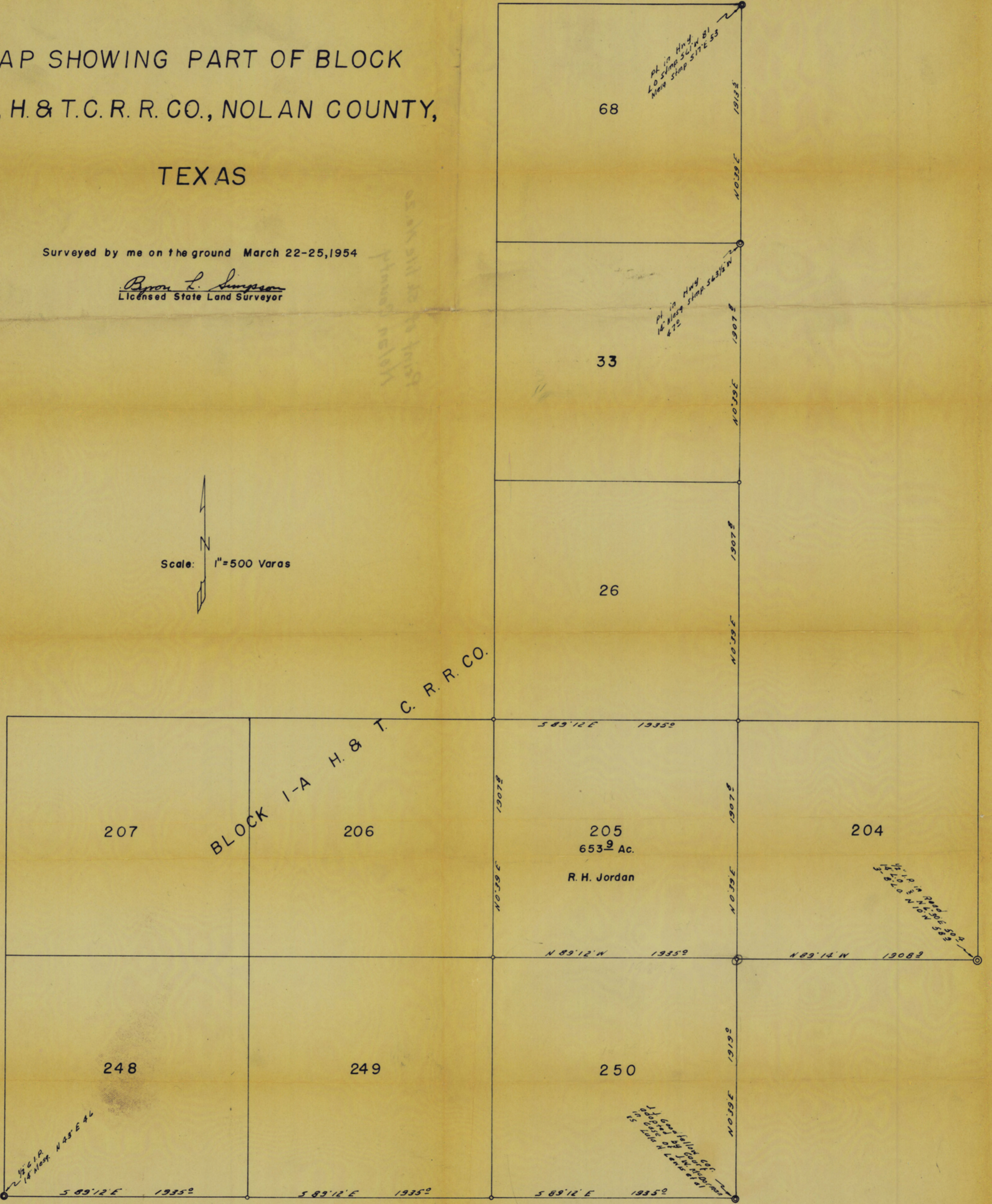
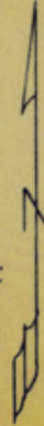
TEXAS

RECEIVED
APR 14 1954
REFERRED TO SCHOOL

Surveyed by me on the ground March 22-25, 1954

Brown L. Simpson
Licensed State Land Surveyor

Scale: 1" = 500 Varas



FILED FOR RECORD IN MY OFFICE THE 8TH DAY OF APRIL, 1954 AT 1:00 O'CLOCK
P.M. AND DULY RECORDED IN THE SURVEYOR'S RECORDS OF NOLAN COUNTY, TEXAS,
THE 12TH DAY OF APRIL, 1954, IN BOOK 20 PAGE 274

Anna Mae Cochran
(ANNA MAE COCHRAN) COUNTY SURVEYOR, NOLAN COUNTY, TEXAS

SKETCH FILES No. 20
COUNTY NOLAN
(2 of 2)