

BOWIE Co. Rolled Sketch No. 3

Report on location of the  
Easterly Northeast Corner  
of Texas.

1970

*counter 42739*

Bowie Co. Rld. 5K. No. 3  
in flat folder

REPORT ON  
LOCATION OF  
THE EASTERLY NORTHEAST CORNER  
OF TEXAS

APPROVED BY:

John Tallant  
John Tallant  
District Engineer  
Arkansas Highway Department

6-13-70  
Date

G. A. Youngs  
G. A. Youngs  
District Engineer  
Texas Highway Department

May 27, 1970  
Date

D 285



COMMISSION

DEWITT C. GREER, CHAIRMAN  
HERBERT C. PETRY, JR.  
GARRETT MORRIS

TEXAS HIGHWAY DEPARTMENT

AUSTIN, TEXAS 78703

June 23, 1970

STATE HIGHWAY ENGINEER  
J. C. DINGWALL

IN REPLY REFER TO  
FILE NO. D-15

Mr. Jerry Sadler  
Commissioner  
General Land Office  
Austin, Texas 78701

Dear Mr. Sadler:

Recently it became necessary to establish the location of the easterly northeast corner of Texas. Our research revealed very little information which could be tied to existing monuments on the ground.

As a result of the efforts to establish this corner between Texas and Arkansas a report was written and approved by Mr. G. A. Youngs, District Engineer for Texas Highway Department and Mr. John Tallant, District Engineer for Arkansas Highway Department. A copy of this report is attached for your information as previously requested.

Sincerely yours

J. C. Dingwall  
State Highway Engineer

By: *A. H. Christian*

A. H. Christian  
Right of Way Engineer

Attachment

cc: District 19

counter 42791

REPORT ON LOCATION OF  
THE EASTERLY NORTHEAST CORNER OF TEXAS

TABLE OF CONTENTS

	PAGE
I. INTRODUCTION . . . . .	1
II. REPORT . . . . .	2
III. APPENDIX . . . . .	5
Figure 1	
Figure 2	

I.

INTRODUCTION

On January 29, 1970, the Texas Highway Commission passed Minute No. 63268. This minute authorizes advanced planning for the construction of a new bridge over the Red River on U.S. 59 and 71 between the K.C.S. Railroad and the existing Index Bridge at such a point that it crosses the river where it forms a common boundary between Arkansas and Texas. The minute further stipulates that Texas and Arkansas will enter into an agreement for the development of this project.

The executed Agreement dated February 11, 1970, requires that the Texas Highway Department shall prepare plans, specifications and estimates of cost for constructing the joint project. The initial step in the planning for the joint project required the location of the easterly northeast corner of Texas to establish the point where the river forms a common boundary between Texas and Arkansas.

This is a report on the establishment of the easterly northeast corner of Texas.

II.  
REPORT

The easterly northeast corner of Texas was located by using recorded data secured from the General Land Office of Texas, Township Plats furnished by Mr. Charles Venable, Engineer of Surveys, Arkansas Highway Department, and information furnished by Mr. Richard V. Hall, Civil Engineer, Texarkana, Arkansas, from the records of Bowie County, Red River Levee District.

The recorded information was compared to numerous existing lines and corners with the results that a post set in concrete 23.5 feet north of the southwest corner of Section 19, T 14 S, R 28 W, Miller County, Arkansas and a hub set from the information furnished by Mr. Hall were used as primary control points to locate the boundary line between the States of Texas and Arkansas. The hub is 200 feet southerly with the centerline of the K.C.S. Railroad from an "X" in the south abutment of the Red River Bridge and 560 feet easterly along a line established by sighting north along the centerline of the K.C.S. Railroad and turning an angle of  $95^{\circ}50'$  to the right. As a secondary control, a piece of railroad iron set in the south boundary line of Arkansas Highway 108 (Paup Spur Road) which is along the boundary line between the N 1/2 and the S 1/2 of Section 18, T 14 S, R 28 W, was used. This marker is recognized as being on the state line by local surveyors and residents of the area. The line calculated between the two primary points is 0.28 of a foot east of the center of the railroad iron and falls on this iron.

The distance to the easterly northeast corner of Texas was established from the plat of Township 14 South, Range 28 West, Miller County, Arkansas (Figure 2). The easterly northeast corner of Texas was located by beginning at the southwest corner of Section 19, T 14 S, R 28 W, and traversing along the state line the distance (176.91 chains) shown on the plat of T 14 S, R 28 W, Miller County, Arkansas. As shown on said plat, the corner is 32 chains (2,112 feet) north of the 106th mile mound (not found) on the boundary line established between the United States of America and the Republic of Texas about the year 1838. Control for the distance from the southwest corner of Section 19, T 14 S, R 28 W, to the easterly northeast corner of Texas was established by using the previously described post set in concrete, the extension of the fenced north boundary line of the S 1/2 of Section 19, T 14 S, R 28 W, and the center of the fenced right of way of Arkansas Highway 108 (Paup Spur Road). The distance from the southwest corner of said Section 19 to the north boundary line of the S 1/2 of Section 19 is 2,635.5 feet or 4.5 feet less than the plat distance. The distance from the southwest corner of Section 19 to the center of the fenced right of way of Arkansas Highway 108 is 7,912 feet as compared to the plat distance of 7,920 feet to the boundary line between the north 1/2 and the south 1/2 of Section 18, T 14 S, R 28 W. These distances are considered within acceptable limits and provide the basis to use the plat distance to traverse from the southwest corner of Section 19, T 14 S, R 28 W, to the easterly northeast corner of Texas.

The grid position of the easterly northeast corner of Texas was computed from a traverse that began at U.S. Coast and Geodetic Station Index utilizing Bowie County Red River Levee Control Point No. 86 as an azimuth mark. The position of Control Point No. 86 was furnished by the U.S. Army Corps of Engineers. The closure on this traverse was within acceptable limits. The easterly northeast corner of Texas is located at Texas Surface Coordinates north 702,805.31 and east 3,053,402.06.

The appendix is composed of Figure 1 and Figure 2 - described as follows:

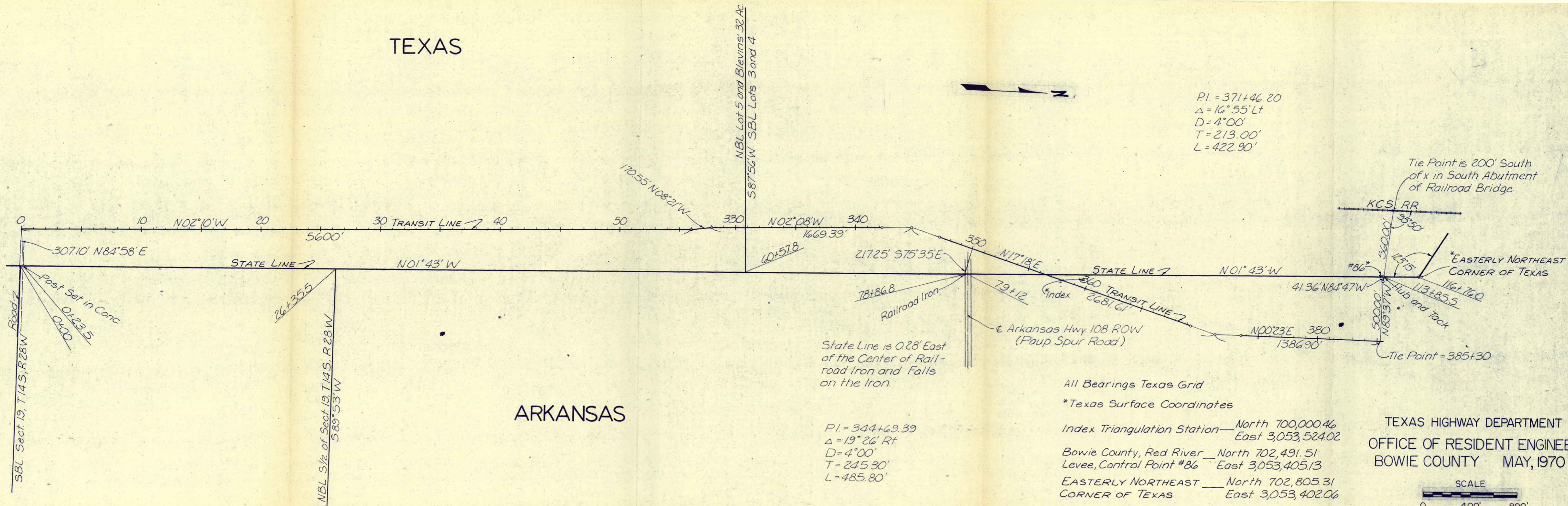
Figure 1 is a diagrammatic sketch which illustrates the primary and secondary control points used, section lines in Arkansas, the state line, and the easterly northeast corner of Texas. The Texas Surface Coordinates are listed for Index Triangulation Station, Bowie County Red River Levee Control Point No. 86 and the easterly northeast corner of Texas.

Figure 2 is an excerpt from the plat of Township 14 South, Range 28 West, Miller County, Arkansas. The excerpt is the west portion of the plat and the surveyor's certification. The boundary line between Texas and Arkansas, mile mound information and the termination of the boundary line on Red River are shown on the excerpt.



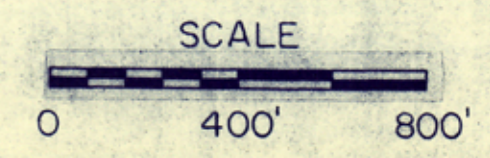
TEXAS

ARKANSAS



All Bearings Texas Grid  
 \*Texas Surface Coordinates  
 Index Triangulation Station — North 700,000.46  
 East 3,053,524.02  
 Bowie County, Red River — North 702,491.51  
 Levee, Control Point #86 — East 3,053,405.13  
 EASTERLY NORTHEAST CORNER OF TEXAS — North 702,805.31  
 East 3,053,402.06

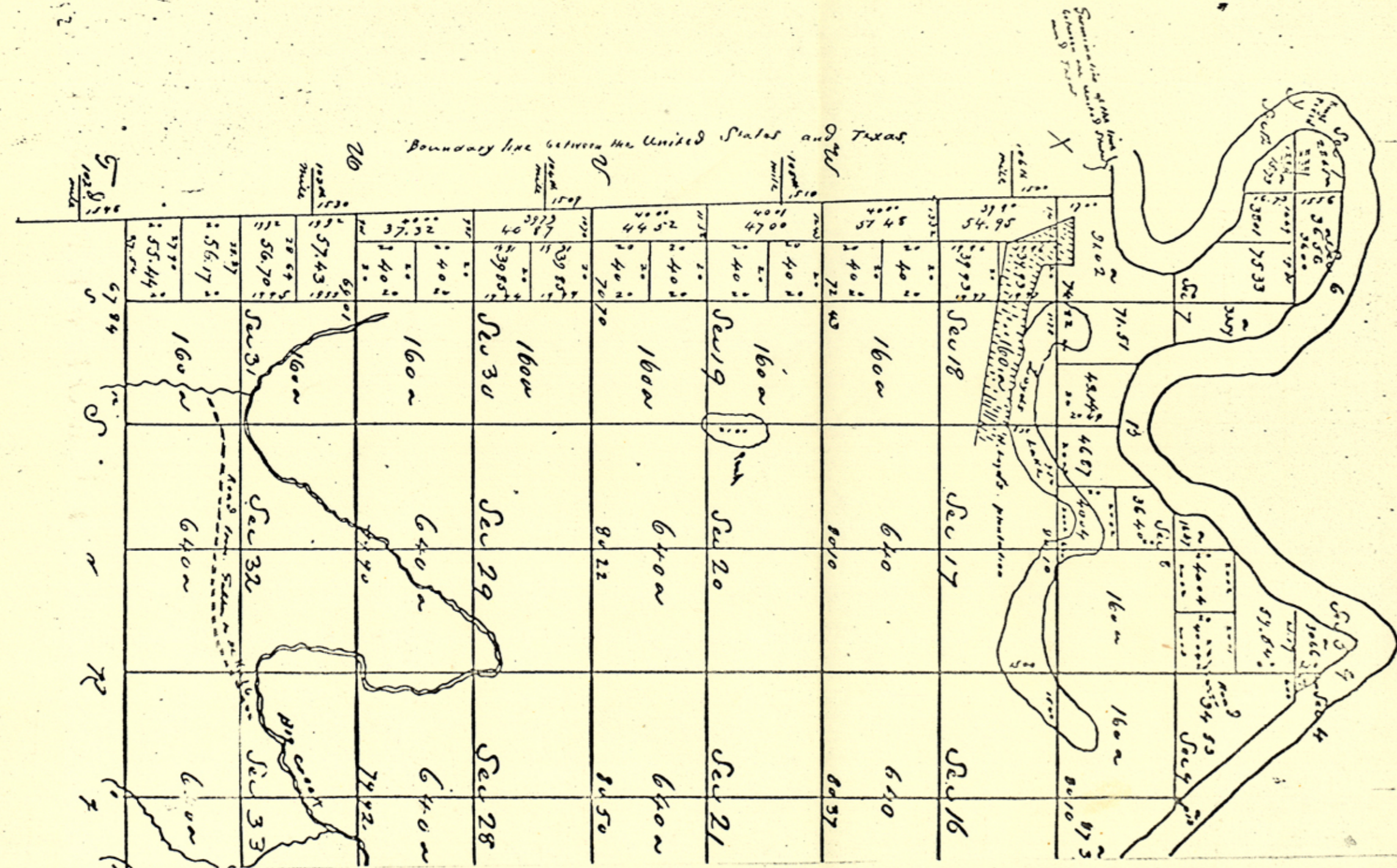
TEXAS HIGHWAY DEPARTMENT  
 OFFICE OF RESIDENT ENGINEER  
 BOWIE COUNTY MAY, 1970



counter 72797 Figure 1

Bowie Co. Rd. Sk. 3

TOWNSHIP 14 SOUTH, RANGE 28 WEST



Surveyor Office  
Little Rock 30<sup>th</sup> June 1842

The above Plat of Township 14 South of the Base line, Ranges 28 and 29 West of the 5<sup>th</sup> P.M. Meridian (South of Red River) is strictly conformable to the field Notes of the Survey thereof on file in this office which have been examined and approved. The East and South Boundaries of T. 14 S. R. 28 W. (except the East Boundary of Section 12 North of Watsons Lake and Section 1 near Surveyed on December 1840 by Allen Martin D.S. under his contract of the 26<sup>th</sup> of October 1840. Payments for which were made by David Fulton Sur Pub Landr and charged to the account of the 4<sup>th</sup> q<sup>r</sup> of 1840. by No. 4. The East Boundary of Section 12 North of Watsons Lake and sections and the Subdivisional lines and meanders of T. 14 S. R. 28 W. were surveyed in April and May 1841 by C. E. Morse D.S. under his contract of the 1<sup>st</sup> of February 1841. The East Boundary of T. 14 S. R. 29 W. and the Subdivision and meanders were surveyed in April 1841 by C. E. Morse D.S. under his contract of the 1<sup>st</sup> of February 1841. Payments to Morse were made by me and charged in my account of the 2<sup>d</sup> q<sup>r</sup> of 1841 by No. 4

Wm. Pelham  
Sur Pub Landr  
in testimony

Sum of the area as set down on the above plot - on T. 14 S. R. 28 W. 17538.33 acres  
T. 14 S. R. 29 W. 4638 .  
Total 17538.71 acres.

Figure 2

counter 42748

Bowie Co. Rld. Sk. 3