

BRAZORIA COUNTY
ROLLED SKETCH NO. 33
33A
33B

33 PLAT
33A Surveyor's Statement
33B Computations

— by F. S. Robbins, July 1888, submitted by C. B. Masterson
in connection with filing of corrected field notes to purchase
excess acreage in Maurice Henry's 1/4 League survey.

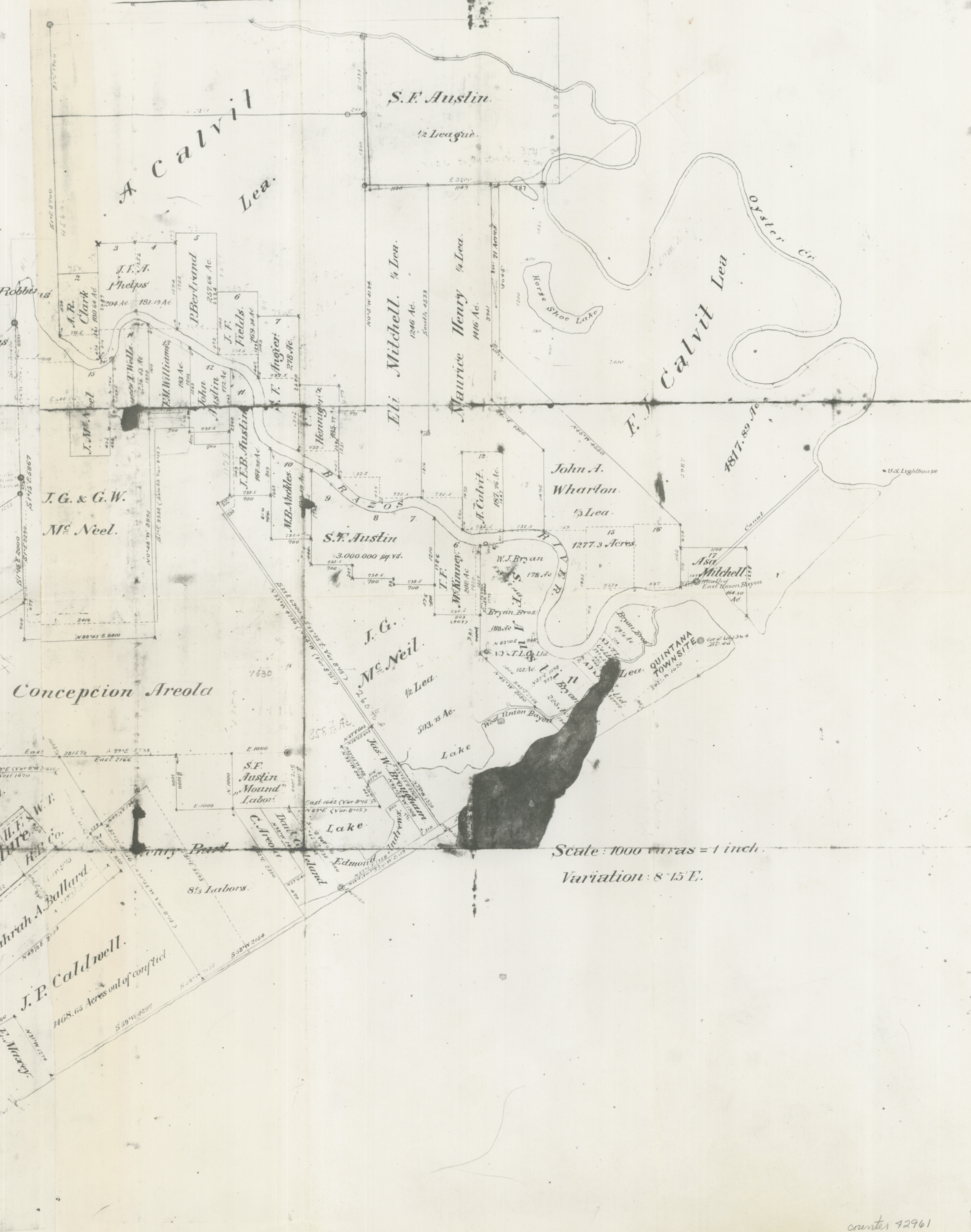
Filed August 20, 1940

counter 42960

C. B. MASTERSON.
REFERRED TO MAP
AUG 0 1940
RECEIVED

Explanations.

- Original corners found by F. S. Robbins.
- Corners made by F. S. Robbins.
- ⊙ Original corners made by F. W. Stevens & found by Robbins.
- Original lines run by F. W. Stevens.
- Survey boundaries.
- Connecting lines & other lines run by F. S. Robbins.
- - - Latitudes & Departures.



Scale: 1000 varas = 1 inch.
Variation: 8° 15' E.

BRAZORIA COUNTY
ROLLEO SKETCH No 33

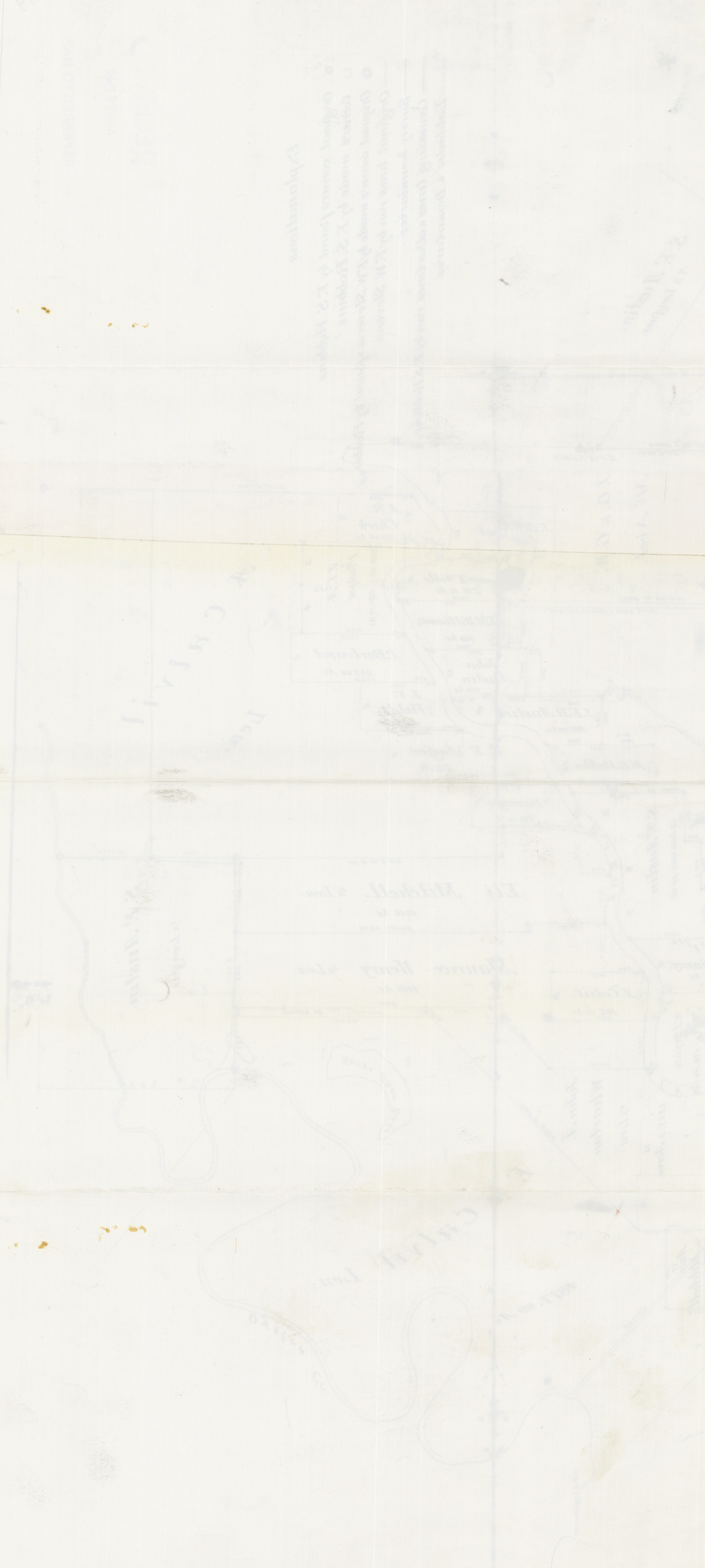
Surveyor's Statement, Plat and Computations by F. S. Robbins,
July 1888 covering survey made in south part of Brazoria County
in vicinity of A. Calvit, F. J. Calvit, Eli Mitchell and Maurice
Henry Surveys, submitted by C. B. Masterson of Angleton, Texas,
in connection with filing of corrected field notes to purchase
excess acreage in Maurice Henry's 1/4 league survey.

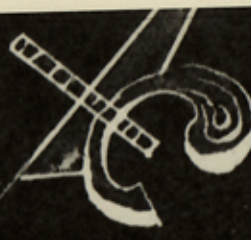
August 20, 1940

- No. 33.....Plat
- No. 33A.....Surveyor's statement
- No. 33B.....Computations

Rb' counter 12762

9
3





Barlow

East 7540

HA 5720

ST. MARY'S

North 4400

North 4000

HA 2000

North 4000

HA 4500

B T Arches

Distribution of excess in meanders of East side of Brazos. between the labors 2 to 17.

Excess in meanders from mouth of Union Bayou to upper corner of labor 2. Surveyed by Robbins - 11,501.

Orgl. 10,990.

511.07 4.65 per cent

Original distances; from Union Bayou west. 265
 " + 4.65% per = 12 = 277.
 " Labor 16. 800
 + 4.65% = 37 = 837.
 Labor 15. do 837
 Labor 14. 725.
 + 4.65% = 34 = 759.
 Labor 13 to 2
 each + 4.65% = $\frac{700}{32.5}$
 12 + $\frac{732.5}{11,500} = 8790$

Excesses applied from Union Bayou.

	S. 71 N. 293 =	S. 95 = 77	277 = 8.	77
Labor 16.	S. 71 N. 107		35	101
	S. 75 N. 80		20.71	77.27
	S. 86 N. 90		6.28	89.78
	Nest 80.			80
	S. 89 N. 160	2.80		160
	N. 79 N. 280	53.40		274.90
	Nest 54			54
		56.20	$\frac{61.99}{56.20}$	836.95
			5.79	
Labor 15	Nest 46			46
	S. 84 N. 100		10.45	99.45
	S. 55 N. 100		57.36	81.92
	S. 72 N. 80		24.72	76.08

	D. 53 ft. 160		96.30		127.90
	D. 38 ft. 280		220.60		172.40
	D. 22 ft. 480		445.		179.80
	D. 40 ft. 83		63.58		53.55
			918.01		837.00
Labor 14	D. 40 ft. 17		13.02		10.73
	D. 48 ft. 60		40.15		44.59
	D. 58 ft. 80		42.39		67.84
	D. 70 ft. 40		13.68		37.57
	D. 86 ft. 360		25.10		359.10
	N. 51 ft. 140	88.10			108.80
	N. 17 ft. 200	191.30			58.50
	Arith 120	120.			
	N. 16 ft. 290	278.80		77.90	
	N. 29 ft. 340	297.70		164.80	
	N. 26 ft. 130	116.80		57.	
	N. 35 ft. 80	65.53		45.89	
	Arith 20	20.			
	N. 30 ft. 44	41.35			15.05
	N. 10 ft. 100	78.48		17.36	
	N. 1 ft. 310	310.		5.40	
	N. 12 ft. 140	136.90			29.10
	N. 39 ft. 100	77.71			62.93
	Arith 25	25.			
	N. 24 ft. 100	91.35			40.67
	N. 53 ft. 200	120.			160.
	N. 74 ft. 140	38.60			134.45
		2117.32	134.34	370.35	1127.35
		134.34			370.35
		1982.98			759
Labor 13	N. 74 ft. 100	27.60			96.25
	N. 86 ft. 240	16.70			237.40
	D. 85 ft. 240		20.90		237.10
	D. 82 ft. 140		19.50		138.60
	D. 83 ft. 19 1/2		2.		19.15
		44.30	42.40		732.50
		42.40			
		1.90			
Labor 12	D. 83 ft. 120.5		15.10		119.85
	D. 87 ft. 460		24.10		459.40
	N. 71 ft. 140	45.60			132.40
	N. 59 ft. 24	12.36			20.85
		57.96	39.20		732.50
		37.20			
		18.76			
Labor 11	N. 59 ft. 76	39			64.87
	N. 33 ft. 80	67.09			43.57
	N. 45 ft. 150	106.10			106.10
	N. 42 ft. 220	163.50			147.20
	N. 56 ft. 280	156.60			232.10
	N. 66 ft. 120	48.80			107.60
	N. 81 ft. 90	5			29.06
		586.09			732.50

Labor 10	N. 81 ft	70	11		69.71
	West	120			120
	S. 80 ft	440		76.40	433.30
	N. 85 ft	110	9.60		109.49
			20.60	76.40	732.50
				20.60	
				55.80	
Labor 9	N. 85 ft	170	14.80		169.41
	N. 67 ft	200	78		184
	N. 57 ft	100	54.46		83.57
	N. 47 ft	230	156.90		168.26
	N. 41 ft	140	105.70		91.80
	N. 30 ft	46	29.57		35.22
			437.43		732.50
Labor 8	N. 50 ft	294	188.93		225.28
	N. 64 ft	100	43.54		87.88
	N. 60 ft	210	105		181.90
	N. 55 ft	40	22.94		32.77
	N. 57 ft	120	65.40		100.60
	N. 62 ft	40	18.78		35.32
	N. 57 ft	79 1/2	43.30		66.75
			488.19		732.50
Labor 7	N. 57 ft	20 1/2	11.16		17.12
	N. 64 ft	420	184.10		377.50
	N. 45 ft	220	155.60		155.60
	N. 28 ft	120	106		56.30
	N. 10 ft	150	147.70		26
	N. 60	260	258.60	27.20	
	N. 4 ft	160	159.60		11.20
	N. 15 ft	200	173		52
	N. 28 ft	136	120.10		63.98
		1335.86		757.70	
				27.20	
				27.20	
				732.50	
Labor 6	N. 28 ft	104	91.80		48.72
	N. 46 ft	185	125		129.50
	N. 59 ft	120	61.80		102.90
	N. 70 ft	380	130		357.10
	N. 68 ft	101 1/2	38		94.28
		446.60		732.50	
Labor 5	N. 68 ft	18 1/2	7		17.02
	N. 64 ft	60	26.30		53.93
	N. 58 ft	60	31.80		50.88
	N. 55 ft	300	172		246
	N. 52 ft	280	172.40		220.60
	N. 66 1/2 ft	157	62.60		144.07
		472.10		732.50	
Labor 4 & 9	N. 66 1/2 ft	183	73		167.73
	N. 62 1/2 ft	500	231		444
	N. 77 ft	100	19.08		95.16
	S. 78 ft	200		42	196
	S. 65 ft	100		42.26	90.63
	S. 53 ft	140		84.30	111.80
	S. 36 ft	80		64.72	47.02
	S. 24 ft	120		107.60	48.80
	S. 8 ft	300		297	42
	S. 24 ft	80		73.08	32.54
	S. 42 ft	100		74.31	66.91
					counter 92.967

3 N =

85 ft.	85 ft.	60		31.80	50.88
	72 ft.	60		18.54	57.06
	85 ft.	11 1/2		1.63	11.47
			323.08	837.24	1465.00
				323.08	
				516.16	
Labor 2	85 ft.	48 1/2		4.60	48.30
	Rest	60			60
	ft. 75 ft.	47	9.77		45.97
	ft. 62 ft.	20	9.59		17.66
	ft. 50 ft.	20	12.86		15.32
	ft. 59 ft.	120	61.80		102.90
	ft. 52 ft.	120	73.90		94.60
	ft. 42 ft.	60	44.59		40.15
	ft. 60 ft.	20	10.		17.32
	ft. 52 ft.	140	86.20		110.30
	ft. 56 ft.	218	122.07		180.92
			430.58		733.44
			4.60		
			425.98		

Distribution of Excess
in Labor on East side of
Brogue -

Statement of a survey made according to instructions received of Mr. F. W. Stevens.

First - On East side of Brazos River.

Beginning at the N.W. cor. of the A. Albrit league, at a live oak tree marked X³ & ~~3~~ ^{this corner was} ~~shown~~ ^{or shown} identified by Mr. (Lute.)

Var. 90° 15' E. - Thence (Var. 90° 15' E.) South of ^{line to cor.} 610.00 prairie - 924.00 an ash br. W. 10.00 - 1113.00 a bush br. N. 6.00 fence post N. 10.00 - 1700.00 set stk. a lone tree br. S 12 N. 96.00

(Var. 87° 15' E.) Thence (Var. 87° 15' E.) East. 908.00 fence - 1338.00 fence course of same N. 40 E. + 840 N. 4000.00 point of timber br. N.W. about 100.00 - 5371.00 set stk. — Then —

Beginning at the N.E. cor. of Albrit league, on Cyster br. a large live oak tree leaning over the creek, this tree is at the mouth of a lane, near Jack Mendez house. It is ^{claimed} supposed to be Jack Mendez N.E. cor. and Sam Dally's N.W. cor.

Thence South 320.00 cor. of Jack Mendez field fence to E. 5.00 - ~~620.00~~ N.W. cor. of Dally's field br. E. 18.00 (a plainly marked line is ^{to} E. of this line) + ~~200.00~~ 880.00 Sam Dally's house br. E. about 150.00 - 955.00 an ash at edge of prairie ~~the~~ league. 1220.00 fence cor. near a gate br. E. about 47.00 1434.00 set a stk. The

7th mile past br. N. 36. W. The point E. 5371²
is N 284 W. showing for width of A. Malvid
5655. W. fence is E. 55 1/2 W.

Thence S. 1300. W. being (1700 and 300) or 3000
W. further S. than the N. W. cor. of the
Sagitt league, set a stk. near some
drift wood, cor. of fence br. S. 27. E. about
220. W. A. Bear house br. N. 8. 38 1/2 W. point of
timber br. S. 53. E.

Thence E. 111. W. fence. 2604 W. Lake. fence
br. S. about 140. 2830 W. across lake. 2920
timber. 3200 W. Cypres Cr. set stk. Line across
M. K. X. br. N 87 W. 12. L. C. N. 1² a ravine
br. N. 20. E. 100. W.

Thence with meanders of Cypres Cr. S. 2. N. 80.
S. 2 1/2 E. 60. S. 6. E. (300. (open timber) S. 21 1/2 E.
80. S. 30. E. 100. S. 35. E. 140. S. 39. E. 120. S. 43. E.
140. in prairie - S. 60. E. (150. timber) 320. S. 58. E.
100. S. 73. E. 60. S. 37. E. 120. S. 28 E (250 open
timber). 440 - S. 41. E. 180. S. 52. E. 120. (fence
near upper line of Mickelson track) S. 75. E.
160. S. 82. E. 80 (opposite to water house.) N 76.
E. (17. fence 105 fence) 140 - N 62. E. (160. N. E.
cor. of stable) 180 - N. 45. E. (29. fence). 100.
N. 26. E. 52. to a live oak post in fence on
lower line of the Mickelson track. - Then -

Beginning at the stk set on Cypres
Cr. at the point reach by running E. 3200

100. Thence S. 300 = pass about 80° E. of the S.
 point of the lake - 400 - for a in a the road.
 1432 100 Horse Shoe lake. off set N. 400.
 S. (700. Horse shoe lake br. E. about 100° E.) 1200
 Thence, set back E. 500. to lake - course
 of lake S. 60° E. & N. 60° W. Thence S. 700 = E. 2400.
 Thence S. (1195 = E. Union Bayou, about 100 =
 above the Dam. 1600 = touched E. side
 of Bayou - 3635 = Slough about 50 = E. of
 Charles Newman's house.) 3987. 100. Thence
 E. 147. 100. to mouth of canal at last tall
 post. Showing from N. E. (at N. W. cor. to
 mouth of canal. S. 7319 100 and E. 2707 100.
 Thence with meanders of Orange River - S. 71. W.
 400. S. 75. W. 80. S. 86. W. 90 - W. 80. N. 89. W. 160.
 N. 79. W. 280. W. 100 - to the mouth of the outlet
 of a small lake. S. 84. W. 100. S. 55. W. 100 - 972. 100
 80. S. 53. W. 160. S. 38. W. (260 mud flat) 280 -
 S. 22. W. 480 - (across mud flat) S. 40. W. 100 - 548.
 N. 60. (pool N. W. cor. of Quintand town trap.
 brs. S. 66. E. 80. E. 180. 100.) - S. 58. W. 80 - S. 70. W. 40 -
 (mud flat.) S. 86. W. 360 - N. 58. W. 140 - N. 17. W.
 200. N. 120 - N. 16. E. (253 line oak tree near
 S. W. cor. of Cameron field) - 290. (bluff banks). N. 29.
 E. 340. N. 26. E. 130. N. 35. E. 80. N. 20. N. 20. W.
 44. N. 10. E. 100 - N. 1. E. 310 - N. 12. W. 140 - N. 39. W.
 100. N. 25. N. 24. W. 100 - N. 53. W. 200 - N. 74. W.
 (240. (hackberry tree in lower edge of timber.) N. 86. W.

885 W
 240 - S. 85 W. 240 - S. 82 W. 140 - S. 83 W. 140 -
 S. 87 W. (128 - Charles Bramers fence - 200. line
 oak tree near N.W. cor. Austin's league - brs. S. 12
 E. - 192.) 460 - (tree brs. S. 59 1/4 E. - about 347)
 N. 71 W. 140 - N. 59 W. 100 - N. 33 W. (40 - Bramers
 landing - 78 - Bramers yard fence) 80 - N. 45 W. ⁹¹ 38
 across Bramers yard -
 not side of field fence) 150. N. 42 W. (38 out
 side of field fence) 220 - N. 56 W. 280 - N.
 66 W. 120. N. 81 W. 100. N. 120 - S. 80 W.
 440 - (on Sand flat) N. 85 W. 280 - S. 67 W.
 (about 100 timber) 200. N. 57 W. 100 - N. 47 W.
 230 - N. 41 W. 140 - N. 50 W. 340 - N. 64 W. 100 -
 N. 60 W. 70 - N. 55 W. 40 (An Elm. on N. bank
 of river near a new house. brs. S. 53 W.) N. 57
 W. 120. N. 62 W. 40 (the Elm tree brs. S. 2° 40'
 W.) N. 57 W. 100. N. 64 W. 420 (across Sand flat
 N. 45 W. 220 - N. 28 W. 120 - N. 10 W. 150 (High
 bluff bank, and open timber) N. 66. 260 -
 N. 4 W. 160 - N. 15 W. 200. N. 28 W. (220. A. Beels
 fence) 240 - N. 46 W. 180 - N. 59 W. (100. opposite
 Round pen) 120 - N. 70 W. (about 40 fence, 260
 Beels house brs. N. 18 E. about 95. vs 269. Beels
 landing). 380 - N. 68 W. 120 N. 64 W. (40 m
 much as one brake) 60 - N. 58 W. 60 - N. 55 W.
 300. N. 52 W. (140. fence) 280 - N. 6 1/2 W.
 340 - N. 6 1/2 W. 500 - N. 79 W. 100 - S. 78 W.
 (100. Mrs. Boling house - 195. fence in front
 of stable) - 300 - S. 65 W. 100 - S. 53 W. 140 -

S. 36 W. (15. Grass yard) - 80. (in mud flat)
 S. 24 W. 120 - S. 8 W. 300. S 24 W. 80. (patch
 near Paul Irigoup. N. W. cor. brs. S. 11° 20' E.
 168 - ^{136 =} v²) S. 42 W. 100. (do - brs.
 S. 48° 10' E. S. 58 W. 60 - S. 72 W. 60. S. 85 W. 60
 R.R. Brown fence) & 60 - W. 60. N. 78 W. 47 -
 N. 62 W. 20 N. 50 W. 20 N. 59 W. ¹²⁰ N. 52 W.
 (46 pin Oak tree between Mr. Brown's house and
 the river) ^{85. Brown's landing} 120 - N. 42 W. 60. N. 60 W. 20
 N. 52 W. 20. Daniels house brs. S. 35 W. 140.
 N. 56 W. 218. alt stk. — Then —

Var. 9° 52' E.

Beginning at stk. set 1700 - S. of R.
 Cor. N. W. cor. - Thence S. ^{being (1700 + 1400) = 3100.} 140° ^{press} about
 200 = E. of a point of timber, some scattering
 live oaks brs E. about 200. most of the above
 distance is through a marsh of high ^{land} ^{4800.}
 weeds - ^{35 20} ~~1820~~ - ^{39 58} ~~2258~~ fence ⁵⁰⁰
 & bank of River, brs. N. - River brs. W. about 30.
 4960 timber - River brs. W. about 40. 5309 - (at
 Brown's fence - about 6 v² N. W. of the N. cor.
 of a cotton patch. wire fence extends S. W.
 towards the river. 5500 - in timber on bank
 of a slough 5605 - fence. 5700 - to ^{river} ⁵⁸⁰⁰
 at stk. set. on call N. 56 W. 218. Daniels
 house chimney brs. S. 20° 15' E. Earhart's N. E.
 cor. brs. S. 11 W. Live Oak tree brs. S. 45 W.

— Then —

After finishing on West side of
 counter 42973 5

P4

the Brazos. river. Surveyed thus -

Beginning at high post at mouth of the Canal. Thence N. 63 1/2 E. (42 3/8 post on E. side of Canal at its mouth) 43.

N 80 E 200. S 72 E. 80 - S 49 E. 180 - S 27 E. 140 - S 20 N. 30 - S 34 E. 80 - S 50 E. 320. S 35 E. 220. S 48 E. 60. S 35 E. (80 sand bar) and out on bar 250. (out on sand ^{bar} to point.)

E. 50. (to Bench) N 50 E. (220 - opposite sand ridge.) 260 - N 33 E. 140 - N 40 E. 80 - N 30 E. 520 - N 47 E. 500 - N 44 E. 900 - N 46 E. 1000. (to where mouth of creek was.)

Life Saving Station. Or. N 7 1/2 E. ^{about} 425. N 62 E. 230. (across sand ^{ridge} to Cyster Cr.)

Life Saving Station bro. N 38 1/2 E. about 405. Thence with ^{the meander of} Cyster Cr. S 87 N. 520 - N 72 N.

(44 Kuffings fence) 240 - N 45 N. (258 - Canal) - N. 52 N. (across Canal - north of Canal on course N 45 N. is 37 -) N 47 E. 40 - N 27 E. 200 - N. 60 - N 13 E. 160 (crossed a small ditch.)

N. 29 E. 120 - N. 37 E. 100 - N. 43 E. 80 - N. 50 E. 120 - N. 57 E. 520 - N 57 E. 80 - N 41 E. 100 - N 30 E. 140 - N 20 E. 100 - N 13 E. 120 - N. 7 1/2 E. 360 - (opposite mouth of the Canal -) N 15 N. 280 - N 27 N. 40 - N 50 N.

^{up to this point about 40 -} 300 (across a mud flat and bend in the creek, radius of bend about 100 -) S 87 N. ^(180 - post) 200. (along a boggy mud flat

about 40 wide - ~~S. 50. N.~~ 440 - (to the
 bank of the creek. width of creek about
 100 -). S. 49 1/2 N. 720 - (width of creek about
 150) S. 66. N. 200 - S. 77. N. 260. N. 86 N. 200 -
 N. 72. N. 180 - N. 62. N. 100 - N. 48. N. 140 - N. 25.
 N. 260 - N. 200 - N. 21. E. 200 - N. 46. E. 200.
 N. 62. E. (160 mouth of a slough.) 210 (across
 same - width of slough about 50 from
 its mouth is about 100.) N. 78. E. 260 -
 N. 180 - S. 76. E. 540 - S. 88. E. 140 - N. 79. E. 120 -
 N. 67. E. 100 - N. 54. E. 80 - N. 42. E. 100 - N. 26. E. 140 -
 N. 8. E. 200 - N. 7. N. 160 - ^(scattering timber) N. 12. N. 60 - N. 23. N. 100 -
 N. 32. N. 80 - N. 40. N. 120 - N. 50. N. 160 - ^(prairie)
 N. 57. N. 140 - N. 61. N. 320 - N. 68. N. 260 - N. 58. N.
 200 - N. 43. N. 220 - N. 30. N. 580 - N. 17. N. (60
 timber) 360 - N. 8. N. 160 - N. 16. N. 300 - N. 40. N.
 160 - N. 57. N. 200 - N. 74. N. 80 - N. 85. N. 60 -
 S. 78. N. 130 - S. 59. N. 140 - S. 48. N. (95 - Swining
 Pen opposite Dr. Ladwells -) 115 - S. 41. N.
 80 - S. 34. N. 190 - S. 28. N. 220 - S. 25. N. 360 -
 S. 22. N. 260 - S. 20. N. 300 - S. 22. N. 120 -
 S. 10. N. 60 - S. 280 - S. 12. N. 140 - S. 22. N. 170 -
 to live oak post in fence on Nickerson
 lower line - it being the same post here
 in before referred to, in call N. 26. E. 57.

W #1

Second - On West side of Brazos River,
Beginning at an Iron post for N.W. corner N.W. cor. bearings are good.
Found some stumps but they do not bear correctly.

(Var. 8°-15'E.)

Thence S. ^{about} 667. or line is E. 5 or a fence
and aft Elm tree, ~~at~~ the edge of the timber
br. E. 5 ^{and} 655. Elm marked X. br. E. 2 ^{and}
and 3 or W. of old mkd line - 1410 - opposite
cor. of a fence W. about 400. 1420 -
set stks. Austin Perry's barn - br. S.
Road is S. ~~5 or~~

Thence E. 230. 12th mile post br. S. S. =
1068. about 20 or S. of S.W. cor. of Henry Perry's
fence. 1191 - ^{3^d} Hackberry tree in front of Henry
Perry's house - 1710 - set stks. - Then -

Beginning at Paul Ingoups. N.W. cor.
a small Iron ~~post~~ stake - bearings gone -
the post near Paul Ingoups cor. ~~is~~ called
in meanders of E. side of Brazos. br. S.
64 1/4 W. 23. A line tree ^{with var 8° 48'} br. S. about 50 ~~or~~

Var 8°-15'E.

~~var 8° 48'~~ Thence S. 466. 325. fence cor.
br. E. 3. or - 766 - the ~~diagonal~~ point reached by
running E. 1710. ~~is~~ W. 42. Showing 1752
instead of 1710 - for width. Thence
E. 2200 - (timber on the river br. E. about
200. or -) Thence S. 480 - Thence E. 435. to
the river. Thence S. 440 ^{on Perry's River} opposite Dam, below

P1

S.	E.
1420.	1752.
480.	2200
800.	435
600.	1000
500.	760
400.	1400
400.	986
4200	8533
158	
4047	

Thence S. 400 - Thence E. 986 to N. line of S.P. Austin
 showing the 1/2 league - Thence N. 153 1/2 to stk on bank
 of river. N.W. cor. of oak 1/2 league - the
 distance from
 line oak tree - in call S. 87. W. 460 - on E.
 bank of Brazos - is S. 77 E 11. vs. -
 S.P. Austin N.W. cor.
 to be S. 40 47
 and E. 8533 1/2
 of Brazos river S. 76 W. 100 - N. 89. W. 160 -
 N. 68. W. 300 (prairie) N. 46. W. 580 - N. 57. W.
 220 - N. 71. W. 140 - N. 85 1/2 W. 40 (timber) S. 88. W.
 80 - S. 79. W. 100 (prairie) S. 71 W. 140 - S. 85 W.
 140 - N. 87 W. 200. N. 78 W. 160 - N. 70 W. ~~240~~
 on E. side in
 call N. 67. W. ^{about 1642 X}
 200. about
 100 - from point
 of timber about
 S. 67 W. 280 (opposite timber which is distant
 about 60 m) stk stk br. S. 83 1/2 E - N. 44 W.
 (200 - timber) 260 - N. 48. W. 160 - N. 52. W. 70 -
 N. 58. W. 93 - N. 64 W. 80 - N. 60. W. (92 ⁱⁿ call E.
 S. 67 W. 285. the Elm tree near new house is
 N. 30. E. 1. ^{br W. 2 -} 380 - N. 63. W. 140 - N. 65. W. (36
 stk. from which a prickly ash tree ~~mk~~ X.
 br. S. 29. W. 11. vs. stk. is 3 vs from river
 bank) 120 - N. 61. W. 260 - N. 51. W. 240 - (mud
 flat) N. 23. W. 240. N. 1. W. 42. (stk. set E 435.
 on bluff bank br. W. 13 -) 400 - N. 6. W. 200.
 N. 16. W. 240. (Beal lower line of fence br. N
 29 E.

Port Bates) 800 - Thence E. 1000 to river
 near new house - Thence S. 600. Thence E
 760. to River. Thence S. 500. Thence E. (358
 fence posts) 1400. (timber ~~is~~ ⁱⁿ about 50)
 Thence S. 400 - Thence E. 986 to N. line of S.P. Austin
 showing the 1/2 league - Thence N. 153 1/2 to stk on bank
 of river. N.W. cor. of oak 1/2 league - the
 distance from
 line oak tree - in call S. 87. W. 460 - on E.
 bank of Brazos - is S. 77 E 11. vs. -
 S.P. Austin N.W. cor.
 to be S. 40 47
 and E. 8533 1/2
 of Brazos river S. 76 W. 100 - N. 89. W. 160 -
 N. 68. W. 300 (prairie) N. 46. W. 580 - N. 57. W.
 220 - N. 71. W. 140 - N. 85 1/2 W. 40 (timber) S. 88. W.
 80 - S. 79. W. 100 (prairie) S. 71 W. 140 - S. 85 W.
 140 - N. 87 W. 200. N. 78 W. 160 - N. 70 W. ~~240~~
 on E. side in
 call N. 67. W. ^{about 1642 X}
 200. about
 100 - from point
 of timber about
 S. 67 W. 280 (opposite timber which is distant
 about 60 m) stk stk br. S. 83 1/2 E - N. 44 W.
 (200 - timber) 260 - N. 48. W. 160 - N. 52. W. 70 -
 N. 58. W. 93 - N. 64 W. 80 - N. 60. W. (92 ⁱⁿ call E.
 S. 67 W. 285. the Elm tree near new house is
 N. 30. E. 1. ^{br W. 2 -} 380 - N. 63. W. 140 - N. 65. W. (36
 stk. from which a prickly ash tree ~~mk~~ X.
 br. S. 29. W. 11. vs. stk. is 3 vs from river
 bank) 120 - N. 61. W. 260 - N. 51. W. 240 - (mud
 flat) N. 23. W. 240. N. 1. W. 42. (stk. set E 435.
 on bluff bank br. W. 13 -) 400 - N. 6. W. 200.
 N. 16. W. 240. (Beal lower line of fence br. N
 29 E.

N 30.4 N. 170. v². (Beals fence bet. N. 85. E.). N. 47. N.
 80. N. 54. N. 60. (opposite Round Pen.) N. 62. N. 50.
 N. 76. N. 140. (Beals landing bet. N. 11 1/4 N. Beal house
 N. 3. E.) N. 72. N. 300. (Beals landing bet. N. 74. E.)
 N. 59. N. 200. N. 52 1/2 N. 440. N. 62. N. 270 -
 N. 71. N. 120. N. 59. N. 440. N. 80. N. 100 -
 S. 84 1/2 N. 140 (Mrs. Balings fence at stable bet
 N. 31 1/4 N.) S. 72. N. 120 (do - bet N. 8 3/4 E.) S. 57. N.
 91. S. 39. N. (17. Timms field fence.) 100. S. 17. N.
 80. S. 8. N. (22. Willie Timms fence) 280.
 S. 20. N. 120. S. 44 1/2 N. (27 P. Srgons fence) 77.
 to Paul Srgons. N. N. cor.

Then

Beginning at stk. set on surf ridge for
 S. N. line of S. F. Austin's 1/3 league. Thence S. 45. E.
 124. v². to S. cor. of said Austin's 1/3 league.
 Thence offset S. 45. E. 60. v² to beach. Thence
 with beach. S. 58 1/2 N. 1900. S. 57. N. 1000.
 set back. N. 45. N. 60. - Then -

Beginning at post for S. N. cor. of E.
 Andrews, a stake on surf ridge near cor.
 of a fence. Thence. offset S. 45. E. 120. v² to
 Beach. Thence with beach. N. 58. E. 1420.
 front of Mr. Ft. Conyans house. 2068. v² and
 41. v². or 2109. Thence N. 45. N. (65. v² to stk.
 set ²⁹⁰⁰ 2900. from Austin S. N. cor. showing
 distance from Austin S. N. cor. to Andrew
 S. N. cor. to be 5709.) 120. set stk. for

in Broughassa cont. Thence N 33 W.
 1320.00 to West Union Bayou. Thence
 with meanders of W. Union Bayou. N. 32 E.
 20. N. 47 E. 35. to mouth of Bayou. Thence
 with meanders of ~~S. side of~~ ^{the} lake
 S. 59 E. 120. S. 8 E. 80. N. 80 1/2 E. 462. (across
 mud flat & rushes.) S. 80 E. 180. S. 60 E.
 220. N. 70 E. 60. N. 35 E. 200. N. 68 E. 60. S. 25 E.
 100. S. 84 E. 200. N. 45 E. 140. N. 24 E. 240. N. 26
 N. 52 1/4. to mouth of W. Union Bayou. Thence
 with W. Union Bayou. N. 70 E. 50. N. 46 E. 80.
 N. 64 E. 60. N. 36 E. 85. N. 68 E. 120. S. 70 E. 40.
 N. 60 E. 100. N. 86 E. 80. N. 26 E. 40. (^{opposite} mouth of
 Bayou leading from French Lake.) N. 84 E.
 214. S. 60 E. 30. S. 45 E. 190. S. 66 E. 76. S. 45 E.
 100. S. 62 E. 60. N. 70 E. 150. S. 75 E. 12. S. 30 E.
 50. S. 82 E. 20. N. 63 E. 20. N. 39 E. 20. N. 12 E.
 43. N. 74 E. 60. N. 3 E. 34. to S. F. Austin S.W.

line of B. League - Then -
 Beginning at S.E. cor. of the S.F. Austin
 mound. labor. strk. Thence (with Var. 9°-10° E)
 S. 32 E. 1000 - center of W. Union Bayou - 1735
 00 to S.W. cor. of E. Andrews track strk. on
 Surf ridge - Thence (with Var. 8°-9° E) S. 45 E.
 120 - to the Beach - Thence with meanders after
 beach - S. 58 W. 20 = fence - nearly in front
 of the McNeil house - about 700 - Mrs.
 Kemp House - 1080 - Mr. Munson's house -

Var. 9°-10° E -

Var. 8°-15° E.

P10

W 10

X. 1700. and
570. = 2270.
instead of
3000 - 2270
shows
shortage 939.

E. side
McClure
lake.

See sketch
next

P 11

1800 - Mr. Munson's house - 2500. "Stevens
 Strick Pen: 2900 about center of Munson
 Cut. ~~6600~~ - 7700. S 59. W. 374. - total distance
 8074 vs set a stk. ^{Thence} S. 59. W. 1700. S 64. W.
 570. ^{vs.} N. 45. W. 60. to point at mouth of
 Bernard river. set stk. E. one of structures
 on W. side of Bernard bro. N 29. 3/4 W. - E -
 end of Dueroz house - bro N 21. 1/4 W.
 Then - Beginning on beach at stk. set
 for. 8074. Thence N. 59. E. 374. - N. 58. E.
 565. Thence N. 45. W. 120 - Thence S. 31. E.
 30. set stk. on surf ridge - ~~for S. E. corner of~~
 Thence N. 31. W. 1844 to lake - set stk.
 Thence with meanders of the lake. N. 4. W.
 520. N. 7. W. 120. N. 38. W. 100. S 76. W. 75.
 Mouth of Jones bro. out side post of
 fish house bro. S. 5. E. 33 1/2 vs. Then by
 mistake followed meanders of lake S. 76. W.
 175. S. 40. W. 70. S. 60. W. 60. S 21. W. 60. S 55. W.
 190. S. 70. W. 85. vs. mouth of a large Bayou. X
 Thence with same N. 6. W. 120. N. 36. W. 55. N. 4. W.
 57. N. 45. E. 40. N. 23. E. 130. width of erud ~~house~~
 about 30. N. 35. W. 220. N. 4. W. 120. N. 55. W. 126
 N. 62. W. 100 - Thence in a north westerly course
 about 100. vs. to a small lake. the slough gradually
 gets smaller until, at its outlet of this lake. it is
 about 6 in width this lake is about
 40. vs. across - Thence ~~from~~ ^{met} ~~bank~~ of Jones creek

N. 29 E. 50 - N. 28 W. 20 - W. 33 - N. 45 W. 20 -
 N. 46 - N. 36 E. 20 - N. 82 E. 14. S. 7 E. 40 - S. 47 E
 20 - S. 8 E. 90 - N. 37 E. 20 - N. 12 W. 20 - N. 50 W.
 20 - N. 26 W. 20 - N. 10 W. 60 - N. 24 E. 20 - N. 74 E.
 20 - S. 45 E - S. 11 E. 60 - S. 52 E. 40 - E. 60
 N. 60 E. 40 - mouth of creek coming from West
 N. 50 head of creek running N. E. 40
 N. 31 E. 80. N. 45 W. 105. N. 18 E. 90 - N. 10 W. 47.
 W. 40 - (opposite mouth of a bayou coming
 around from the lake.) N. 19 E. 60 - (creek about
 20 wide - mouth of a small lake.) N. 64 E.
 60 creek straight to lake. meander of small lake
 90 - N. 23 W. 100. W. 75 - (to lake about ¹³/₁₀
 from center of the head of Jones Creek.)
 Thence with meander of lake. N. 38 E. 90 -
 N. 9 E. 160 - N. 37 W. 256 - N. 5 W. (30 creek)
 42 (across creek) S. 8 W. 20 - N. 59 W. (33 -
 old mouth of creek.) 73. (across) S. 60 W. 380.
 S. 26 W. 200 - S. 10 E. 260 - S. 40 E. (70 - head of a
 small bayou running off S. W.) 246. (mouth of
 said small bayou & head of another bayou.) S. 56
 E. 130 - N. 85 E. 140 - N. 50 E. (98 center of creek.)
 106. to point at mouth of creek. at call.
 W. 75. Then - Beginning - at mouth of
 creek at call N. 5 W. 30. Thence with
 meander of creek E. 7 - S. 56 E. 20 - E. 20 -
 N. 60 E. 20 - N. 45 E. 40 - N. 80 E. 90 - N. 20 E. 20 -
 N. 20 W. 100 - (to the mouth of a large bayou.)

X see sketch
 no 2 -

X see sketch
 no 3 -

(764. 28)
 N. 9 E. 232 1/2
 S. W. line no 2.

X see sketch
 no 4

X see sketch
 no 3 -

P12

Thence with said large bayou. N. 74. E. 100
 N. 60 - N. 57. W. 60 - S. 80. W. 30 - Thence Beginning
 again at Jones creek - Thence N. 40. W.
 (20 across said large Bayou) 35. (Jones ^{creek}
 5 in width) N. 8. E. 20 - N. 6. W. 25 - N. 41. W.
 46 - S. 73. W. 20 - S. 5. E. 20 - S. 13. W. 11 - S. 6. W.
 5 - N. 54. W. 20 - S. 55. W. 12 - S. 13. E. 20 - S. 27. W.
 16 - N. 56. W. 40 - N. 23. W. 20 - N. 50. W. 20 - S. 60. W.
 20 - N. 2. W. 20 - N. 10. W. 20 - N. 15. E. 40 - N. 50. W.
 20 - ~~N. 35~~ N. 35 - N. 43. W. (30 head of creek)
 45 (lake at a point) N. 100 - N. 22. W.
 180 - N. 42. W. 120 - S. 81. W. 146 - N. 17 1/2 W.

172^x Mouth of Jones creek. Mt. J. P. Poyans house
 (Br. E.) N. 11. W. (40 across creek to point
 on lake) 90 - N. 50. W. 80 - mouth of bayou
 S. 80. W. 80 - S. 34. W. 150 - S. 8. E. 110 - S. 24. E. 160 -
 S. 56. E. 140 - N. 85. E. 80 - S. 2. E. 120 - S. 22. E. 190 -
 S. 56. E. 140 - N. 60. E. 100 - N. 34. E. (70 mouth of
 small bayou running Southeastly) 80 -
 N. 9 1/2 W. (75 - center of ^{head} mouth of Jones creek) 87
 (connect with Ball. N. 43. E. 45) - Thin -
 Beginning at mouth of Jones creek, at ~~all~~
 N. 17 1/2 W. 172 - Thence with meander of Jones
 creek - N. 23. E. 140 - N. 65. E. 70 - N. 30. E. 70 -
 N. 54. E. 80 - N. 80. E. 20 - S. 6 - S. 64. W. 14 -
 S. 6. E. 24 - S. 45. E. 20 - S. 34. E. 33 - E. 44 -
 N. 24. W. 48 - N. 25 - dam at head of Jones
 creek, Thence with meander of the lake

see sketch
 no 5.

P 13

S. 87. E. 90 - N. 32. E. 200 - N. 10. E. 50 - N. 9. N.
 120 - N. 31. N. (165 point of lake N.E. about 30.)
 200, mouth of Jones creek.) 232 (point.)
 S. 45. N. 16 (across Jones creek.) S. 50. E. 125
 (point at mouth of Jones creek on N. side)
 S. 71. N. 105 - S. 4. E. 150 - S. 12. N. 145 - S. 16. E.
 115 - S. 4. N. 65 - S. 85 1/2 N. 18 - (connect with
 call N. 25. on dam.) Then -
 Beginning at mouth of Jones creek, at
 call N. 31. N. 232. Thence with meanders
 of Jones creek - N. 45. E. 10 - To. 13 - ~~S. 69. E.~~
~~58 - N. 80. E. 45~~ (width of creek 20.) S. 69. E.
 58. N. 80. E. 45 - S. 50. E. 60. - (width of creek 40)
 N. 84. E. 50 - N. 39. E. 100 - N. 17. N. 140. N. 81. N.
 (at 40. width of creek 15.) 65 - N. 13. N.
 18 - N. 45. E. 30 - N. 16. E. 80 - N. 61. E. 48 - S. 66.
 E. 14 (^{head} ~~mouth~~ of ^{Jones} creek) S. 26. E. 30.
 Thence ^{with} meanders of a lake - S. 26. E. 30 - S. 68. E.
 90 - N. 49. E. 130 - N. 15. N. 160 - N. 30. N. 240.
 N. 20. N. 110 to mouth of Jones creek "S. N."
 N. 54. N. 50 - S. 72. N. 90 - S. 2. E. 261. (at ~~mouth~~
 stks. about 10 in. high - piece of rifle barrel
 supposed to be seaboard cor. or line -) S. 30. E.
 200 - S. 14 1/2 E. 40. vs. across creek, and
 connect with call S. 66. E. 14. - Then -
 Beginning at mouth of Jones creek ^{at} call
 N. 20. N. 110 - "S. N." - Width of creek 15 - Thence
~~Thence~~ with meanders of the creek N. 4. E.
 45 -

S26E30 to N. 20. N.

W X 2

n. 71. E. 170 - S. 60. E. 140 - E. 40 - n. 27. E. 40 -
 n. 50. E. 28. ^{head} mouth of Jones creek. Thence
 with meanders of the lake - N. 70. E. 110 -
 N. 25. W. 180 - N. 48. W. 130 - N. 19. W. 180 -
 N. 39. W. 80 - S. 82. W. 140. (stake at the ^{mouth}
 of Jones creek.) S. 35. (across creek.)
 S. 55. E. 100 - S. 140. S. 23. E. 140 - S. 48. E. 100.
 S. 78. E. 80 - S. 35. E. 28. (to apron) S. 24. E.
 34. (connect with call n. 50. E. 28. a ^{bore}
 at ^{head} mouth of Jones creek) Thence -

Beginning at mouth of Jones creek, a
 stk, at call S. 82. W. 140. Thence with
 meanders of Jones creek. N. 20. W. 40 - N.
 W. 130 - lake "W" Thence ^{with} meanders of the
 lake S. 79. W. 70 - N. 180 - N. 12. W. 100 -
 N. 34. W. 90 - N. 54. W. 100 - N. 30. W. 90

mouth of Jones

creek - Thence with meanders of Jones
 creek. N. 48. E. 95 - N. 77. E. (at 72. large
 live oak post on dam & as a large
 white cedar post. S. 75. (center of dam)
 N. 46. W. 40. (with dam to the gate -
 Thence with meanders of west side of
 Jones creek. S. 64. W. 85. S. 34. W. 40 -
 S. 45. W. (~~at~~ ^{to} mouth of Jones creek) 70 -
~~S. 24. W. 80~~ Thence with meanders of
 the lake S. 24. W. 80 - S. 2. W. 70 - S. 31. E. 80 -
 S. 55. E. 100 - S. 3. W. 180 - S. 26. E. 50 - S. 52
 E. 70 - N. 76. E. 120 - N. 53. E. S. 30. (head
 of Jones creek) -

P 15

across Jones creek and
 N 3 1/2 E. 25. connect with call N 58. W.
 130^{at} - W - Then - Beginning at
 center of Dam, at call N 77. E. 75. Point
 of the Lake above the dam br. N. 40. W.
 about 300. Thence with dam S. 46. E.
 (34 gate) - 35 - ^{End} ~~225~~ of dam, Thence with
 lake, or Jones creek - N. 56. E. 70. N. 4. E.
 50 - N. 22. W. ~~At~~ 260. (Point of Lake on
 W. side br. S. 40. W. ~~width~~ of lake about
 100.) N. 35. E. 160 - N. 7. E. 100 - (width of
 lake or creek, 93.00, ^(width about 150)) N. 6. W. 130 - N. 45. E.
 90 - N. 68. E. 120 - N. 24. E. 300 - N. 20. W. 60 -
 N 3 1/2 W. 200 - N. 25. E. 120 - N. 55. E. 70 - N. 19. E.
 50 - N. 10. W. 50 - N. 24. W. 230 - ~~N.~~ 90 - (width
 about 50.0) N. 47. E. 350 - N. 63. E. 40 - (width
 about 150.) N. 28. E. 90 - N. 15. W. 120 - N. 49. W.
 125. N. 8. E. 170 - N. 26 1/2 W. 57 - N. 45. W. 90.
 W. 260. N. 20. W. 150. N. 41 W. 100. to stk
 set on Jones creek. - Then -

Beginning at an Iron Post for A. J. Crane
 Var. 9° 30' 48" N. W. cor. Thence (with Var. 9° 30' E.)
 S. 2877. stump of tree marked 2900 - for dis-
 tance of 2904 1/2 from the Brays ~~mark~~ br.
 E. 11. W. a pecan^{tree} marked for. and off.
 stand^{about 5} br. N. Thence S. 290. to complete
 distance of (2877 + 290) or 3167. Thence
 S. 57. W. ~~161~~ 161. reference 657 fence again.
 1243. ~~to~~ Jones creek. ^{at} ~~1050~~ stk. set in

Var. 9° 30' 48"

Var 9° 30'

P16

Call N. 41. W. 100 - — Then —

Beginning at the S.E. cor. of S. F. Aults
Var. 9° 15' E. round labor. Thence (with Var. 9° 15')
N. 1000 - or. Thence N. 5788 = ~~distance~~
with call N. 4. E. "b. n." at mouth of Jones
Cr. at N. 4. E. $\frac{32.12}{43}$ - 5800. or set stk.
in Jones Cr.

Surveyed July 1888

Wm. Hudgins Chain
and
J. B. Jones Carriers

Fred S. Robbins
Surveyor

P 18

Statement of Survey
made for.

Lee & Ferguson, Dallas

by Instructions of
Mr. F. N. Stearns -

Surveyed July 1888.

19

counter 42987

BRAZORIA COUNTY
ROLLED SKETCH No. 33 A.

P19

RECEIVED
AUG 20 1940

REFERRED TO MAP

counter 42988



0810-540-2500.

BASCOM GILES
COMMISSIONER
GENERAL LAND OFFICE
AUSTIN, TEXAS

(Keep in Rolled sk. drawer)

BRAZORIA COUNTY ROLLED SKETCHES NOS. 33, 33A, & 33B

Surveyor's Statement, Plat and Computations by F. S. Robbins, July 1883 covering survey made in south part of Brazoria County in vicinity of A. Calvit, F. J. Calvit, Eli Mitchell and Maurice Henry Surveys, submitted by C. B. Masterson of Angleton, Texas, in connection with filing of corrected field notes to purchase excess acreage in Maurice Henry's 1/4 league survey.

August 20, 1940

William P. Smith

→ No. 33.....Plat

No. 33A....Surveyor's statement

No. 33B....Computations

counter 42989