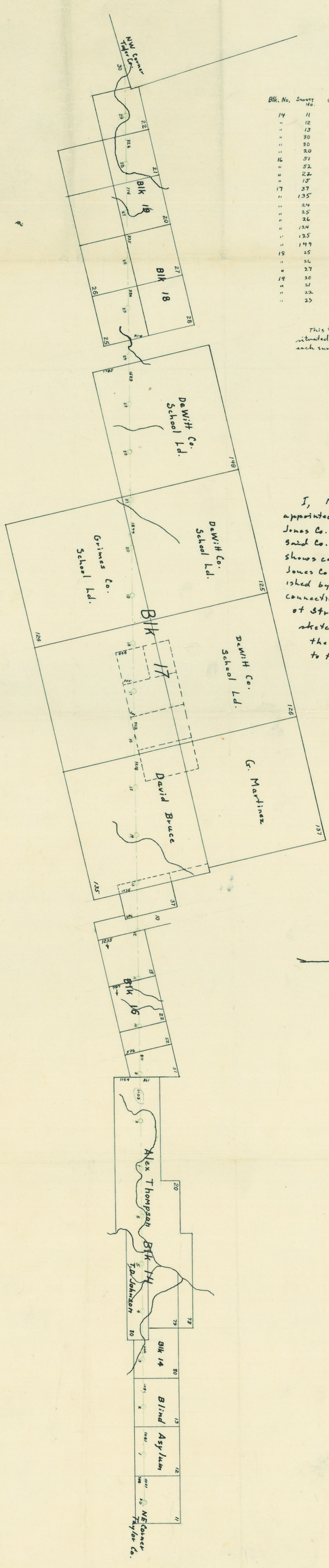


JONES CO.  
BOUNDARY LINE  
BY  
MARTIN DUVALL



| Blk. No. | Survey No. | Original Grantee      | Acres in Jones Co. | Acres in Taylor Co. |
|----------|------------|-----------------------|--------------------|---------------------|
| 14       | 11         | Blind Asylum          | 308.66             | 51.20               |
| "        | 12         | "                     | 357.40             | 132.50              |
| "        | 13         | "                     | 534.74             | 105.26              |
| "        | 30         | T & P R.R. Co.        | 313.10             | 83. -               |
| "        | 30         | T.D. Johnston         | 976. -             | -                   |
| "        | 20         | A. Thompson           | 1753. -            | 1317. -             |
| 16       | 51         | T & P R.R. Co.        | 302. -             | 77. -               |
| "        | 52         | "                     | 204.40             | 115.60              |
| "        | 22         | "                     | 308.30             | 331.70              |
| "        | 15         | "                     | 151. -             | 489. -              |
| 17       | 37         | "                     | 474. -             | 156. -              |
| "        | 135        | D. Bruce              | 2654. -            | 1949. -             |
| "        | 24         | T & P R.R. Co.        | 519.11             | 3379. -             |
| "        | 25         | "                     | 463.09             | 90.31               |
| "        | 26         | "                     | 401.51             | 151.89              |
| "        | 124        | Grimes Co. School Ld. | 230. -             | 419.300             |
| "        | 125        | DeWitt Co. School Ld. | 4349. -            | 78.50               |
| "        | 149        | "                     | 3438. -            | 1003. -             |
| 18       | 25         | T & P R.R. Co.        | 102.60             | 557.40              |
| "        | 26         | "                     | 37.80              | 602.20              |
| "        | 27         | "                     | 634.56             | 54.40               |
| 19       | 20         | "                     | 531. -             | 109. -              |
| "        | 21         | "                     | 384. -             | 256. -              |
| "        | 22         | "                     | 237. -             | 403. -              |
| "        | 23         | "                     | 16.21              | -                   |

This table shows the number of acres situated in both Jones and Taylor Co. for each survey the county line runs through.

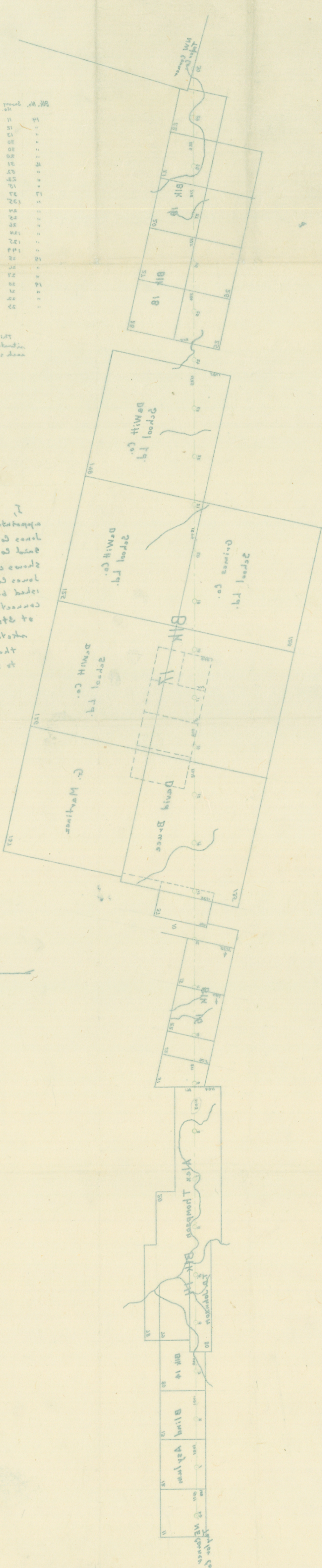
I, Martin Duvall, Surveyor appointed by the Commissioners Ct. of Jones Co. to establish the boundaries of said Co. do hereby certify the above sketch shows correctly the position of the S. Line of Jones Co. + N. Line of Taylor Co. as established by actual survey. With the connections of lines of surveys, crossing of streams + creeks and that this sketch is a true copy of the plat of the S. Line of Jones Co. as returned to the General Land Office.

Martin Duvall  
Appointed to  
establish boundaries  
and Surveyor of Jones Co.

(Drawn in 1882)

| Blk. No. | Survey | Original Grantee | Acres  | Balance |
|----------|--------|------------------|--------|---------|
| 14       | 11     | Blind Asylum     | 208.66 | 21.50   |
| 15       | 12     | "                | 327.46 | 122.50  |
| 16       | 13     | "                | 224.74 | 102.25  |
| 17       | 14     | "                | 317.10 | 82.00   |
| 18       | 15     | "                | 172.00 | 120.00  |
| 19       | 16     | "                | 302.00 | 72.00   |
| 20       | 17     | "                | 204.40 | 127.00  |
| 21       | 18     | "                | 302.30 | 241.70  |
| 22       | 19     | "                | 121.00 | 422.00  |
| 23       | 20     | "                | 424.00 | 122.00  |
| 24       | 21     | "                | 202.00 | 144.00  |
| 25       | 22     | "                | 217.11 | 222.00  |
| 26       | 23     | "                | 427.04 | 40.21   |
| 27       | 24     | "                | 401.21 | 121.21  |
| 28       | 25     | "                | 414.80 | 414.80  |
| 29       | 26     | "                | 242.00 | 242.00  |
| 30       | 27     | "                | 102.00 | 102.00  |
| 31       | 28     | "                | 27.20  | 102.20  |
| 32       | 29     | "                | 244.21 | 24.40   |
| 33       | 30     | "                | 221.00 | 104.00  |
| 34       | 31     | "                | 224.00 | 202.00  |
| 35       | 32     | "                | 221.00 | 402.00  |
| 36       | 33     | "                | 12.21  | 12.21   |

This table shows the number of acres included in both Jones and Taylor Co. and shows the county line was through.



Martin Duyall  
 Appointed to  
 establish boundaries  
 and survey of Jones Co.  
 to the General Land Office.  
 The S. line of Jones Co. as returned  
 is shown on the plat of  
 school is shown on the plat of  
 of streams & creeks and that this  
 connections of lines of surveys, crossing  
 is shown on actual survey. With the  
 Jones Co. & Martin of Taylor Co. as established  
 shows correctly the position of the S. line of  
 and Co. do hereby certify the above school  
 Jones Co. to establish the boundaries of  
 appointed by the Commission of  
 Martin Duyall Surveyor

(Drawn in 1882)