

HARDIN COUNTY
ROLLED SKETCH NO. M.H.

Report and Tracing

Counter 45760

155
RECEIVED

JUL 17 1936

REFERRED TO MAP

Beaumont, Texas.
July 16 th 1936.

Hon. J.H.Walker, Commissioner.
Austin, Texas.

Dear Sir :-

We are in receipt of your letter of the 10 th., with field notes of the P.S.Watts Survey, of Hardin County, Texas, which you are returning for further action. There seems to be a misunderstanding somewhere in the matter.

On June 24 th., 1936, Mr T.M.Hyde and the writer called at your office, representing the Olive-Sternenberg & Co., a co-partnership and presented to you for attention several re-surveys made for us by Mr Hyde, which show an access in distance and acreage when going to the old original established lines and corners, surveyed previously also on the ground.

Major Hawkins refered us to Mr Blucher on the re-survey of the Hiram Barber and J.A.Vickers Surveys and to Mr Bascom Giles on the re-survey of the P.S.Watts Survey, for their attention. We worked with these gentlemen for over two hours on these matters. Mr Giles after some search of your files found a very old map, on which after close scrutiney the BBB&C Ry Co., tract of land patented to Weathersbee was located, which is the survey our field notes call for for the P.S.Watts Survey. Mr Hyde ran all the lines of this BBB&CRY Co., survey and located it correctly on the ground. Mr Hyde feels like that he could not have surveyed our 203 acre P.S.Watts Survey correctly unless he went to the original corners of this BBB&CRY Co., Survey. there being no other lines for him to stop at, these corners and line are only ones on the ground that show to be the north boundary line of this P.S.Watts Survey. This survey extends into Tyler County, all of the lines of the survey show to be very old and the only ones there for same. All this can be substantiated by the very old map in your office of which the very small BBB&CRY Co., tract can be seem but is very dim.

We are asking to file the field notes for record, which in the future may otherwise cause trouble, with adjacent surveys.

Mr T.M.Hyde, State Surveyor, spent many weeks on the ground and surveyed all adjacent surveys which all show accessive so to satisfy himself that the lines as shown on the ground does not encroach on any of the adjacent surveys. We think if more wrk like this was done and submitted for your record it would avert much line trouble, this, should while limited to a small area should be valuable information for your office.

In event you desire more information we suggest that you address Mr T.M.Hyde, Kountze, Hardin County, Texas. I am herewith returning the field notes for your further consideration. Both Mr Blucher and

Mr E. [unclear]

*C. F. W. accompanying
my items returned
10/21/36 for
connection
10/21/36
C. F. W.*

Yours very truly

Olive-Sternenberg & Co.,

Chas A Sternenberg

counters
45761

Kountze, Texas.

Mr. J. H. Walker, Com. Gen. Land Office,
Austin, Texas.

June 30th, 1936.

Dear Sir:

Below I submit statement of facts as I find them on the ground in connection with a resurvey of the P. S. Watts survey in Hardin and Tyler Counties.

Preparatory to making this survey I obtained from the surveyors and county clerks offices of Hardin and Tyler counties, field notes of all surveys between Village creek on the South and Turkey creek and Beech creek and the county line as the resurvey I was to make covered all the territory embraced therein.

As the Elijah Green survey controls the location of the P. S. Watts my first object was to find its lines and corners so on the 1st day of October 1935 I began at the N. E. corner of a survey of 160 acres made for W. W. Fortenberry out of Section No. 196 H. & T. C. R. R. Co. We identified the corner by its patent calls and ran a line North for a distance of 433.4 varas to the N. W. corner of H. & T. C. R. R. Co. No. 197. We followed an old marked line the entire distance to this point where we found a corner stake and marked trees but the original witness trees had fallen and burned. Here we find an old line leading East and West.

From this point we ran West with the old marked line for a distance of 574.9 varas to a stake. This corner was originally witnessed by a black gum bearing N 13 W 5 vrs. The tree had fallen but the stump of same still visible. We found this line to be 9.9 varas excessive in length.

We ran North from this corner along the old West line of 196, H. & T. C. R. R. Co. for a distance of 768.6 varas where we find a stake in the Tyler-Hardin County line to a point where we found an old stake and new witness trees marked. The natural objects called for on this line being 2 spring branches which we found as called for in old notes to this section. This corner was originally witnessed by a holly bearing S 11-1/2 W 3 vrs. A large tree had fallen and broken down the holly but enough evidence of same remained to show where it stood. This line is 7.6 varas in excess of its call. For some reason J. N. Dark who located the H. & T. C. R. R. Co. surveys in this locality in 1868 failed to mention the county line but went to it with his line.

From this point we ran West with the county line a distance of 326 varas and set a mark for the N. W. corner of Sec. 196 and looked for the

2.

East line of the Elijah Green survey. This point is in brushy woods where very little large timber is left standing old enough to bear the old marks of the Green survey. From the evidence on the ground, this point was once in the path of a hurricane which blew ^{down} most of the old trees.

Not finding anything here we turned South and at 633.9 varas set a mark for the S.E. corner of the E. Green survey. We found no evidence of a line or corner here nor did the creeks called for in Green's field notes correspond with the calls. At a point 46.8 varas South of our marker we found an old line leading East and West and ran East to the creek without measurement but found nothing to indicate where the East line of the Green will intersect this line. After making a careful search in this vicinity we found the original S.E. corner of the Elijah Green survey and reran the East line back to the county line 733.3 varas re-marking the corner of Sec. 196, H. & T. C. R. R. Co. At the point of intersection with the county line we found the upturned roots of a beech in the course and distance set out in field notes to the section. Only one witness tree was marked here originally.

This makes the line of the section 99.3 varas in excess of its call and after remeasuring our line from here back East with the county line find the extreme North line of the section to be in excess 22.4 varas. The excess of the East line of the Green from county line to S.E. corner being 99.3 varas can be accounted for in this way. The chainmen evidently lost one "tally" in their measurement, a tally being 100 varas.

We then ran the South line of the Elijah Green to a point for its S.W. corner which will fall in a large shallow pond covered by dense growth of underbrush. The corner originally witnessed by a white bay and pin oak both of which are short lived trees and have disappeared. We here set a mark and went to the N.W. corner of the Green which a few years previous I had occasion to locate. The original witness trees here are a black gum and sweet gum. The former is still green and standing and marked as set forth in field notes. The latter tree is dead but remains of same still on the ground.

From the N.W. corner of the Green We ran a line South and at 451 varas we passed the S.E. corner of the L. G. McGaughey survey and prove it by its original calls. One of the pines still green and standing, the other one cut down but stump remains. We continued our line South to intersection of line from S.E. corner and there establish a new corner for the Elijah Green S.W. corner. To this point on both the South and West lines of the Green we were able to find a few of the old line trees to identify the outlines of this survey.

were able to find a few of the old line trees showing just where the old survey was located.

From the S.W. corner of the Green survey we ran a line West for a distance of 1284 varas, the call for the South line of the P.S. Watts survey and set a mark. No evidence of the original corner to be found as this point is woods where the timber and other conditions were such that when the frequent forest fires destroyed the small trees originally marked here no evidence remained.

From this point we ran North through cut over lands a short distance and found a black gum tree with the old marks of the E. Foshee survey which was included in the P.S. Watts patent. We measured over to this tree and returned to our mark at the S.W. corner of the P.S. Watts survey and set a stake to conform to the old line tree and ran North to the county line a distance of 737.3 varas. This line is also excessive in length. No witness trees were marked in the original survey which calls for a stake marked R in the county line.

From this point we ran East with the county line 523.4 varas to the original S.E. corner of the S.P. Wilson survey in Tyler County and identified same by the stumps of its witness trees which had been cut.

We then ran North a distance of 318 varas the call for P.S. Watts West line but found no corner.

As the P.S. Watts calls its North line to be the South line of a small survey in the name of the B.B.B. & C.R.R. Co which lies South of and adjoining the L.G. McGaughey survey we went to the S.E. corner of the latter on the West line of the E. Green survey and ran a line West and at 777.6 varas we found its N.W. corner (B.B.B. & C.R.R. Co.) and a N.E. corner of the S.P. Wilson survey which we identified by calls in patents to these surveys.

From here we ran South to the S.W. corner of the B.B.B. & C.R.R. Co. We missed the corner and upon calculation find the line to run S 00 deg 22'E 279.7 varas instead of 277 varas as set out in field notes. We then ran a line East with the marked line of B.B.B. & C.R.R. Co 776.1 varas to West line of the E. Green survey which point falls in open space which was many years ago in a field. Returning to the S.W. corner of B.B.B. & C.R.R. Co we ran its course as shown by plat herewith to the S.E. corner of the S.P. Wilson survey in the county line. We found this line to be crooked and followed the old marks as they show upon the ground. We find the P.S. Watts to have an excess of 26 acres.

Counter 45769

As to the matter of excess in this survey it seems that the P.S.Watts was made to take up the old E.Foshee survey of 160 acres with the additional land in Tyler County South of the B.B.B. & B.R.R.Co. 37.5 acres of land.

From my experience in these East Texas counties I found all the old surveys more or less in excess of their patented acreage which I attribute to the methods in vogue when this part of the state was settled.

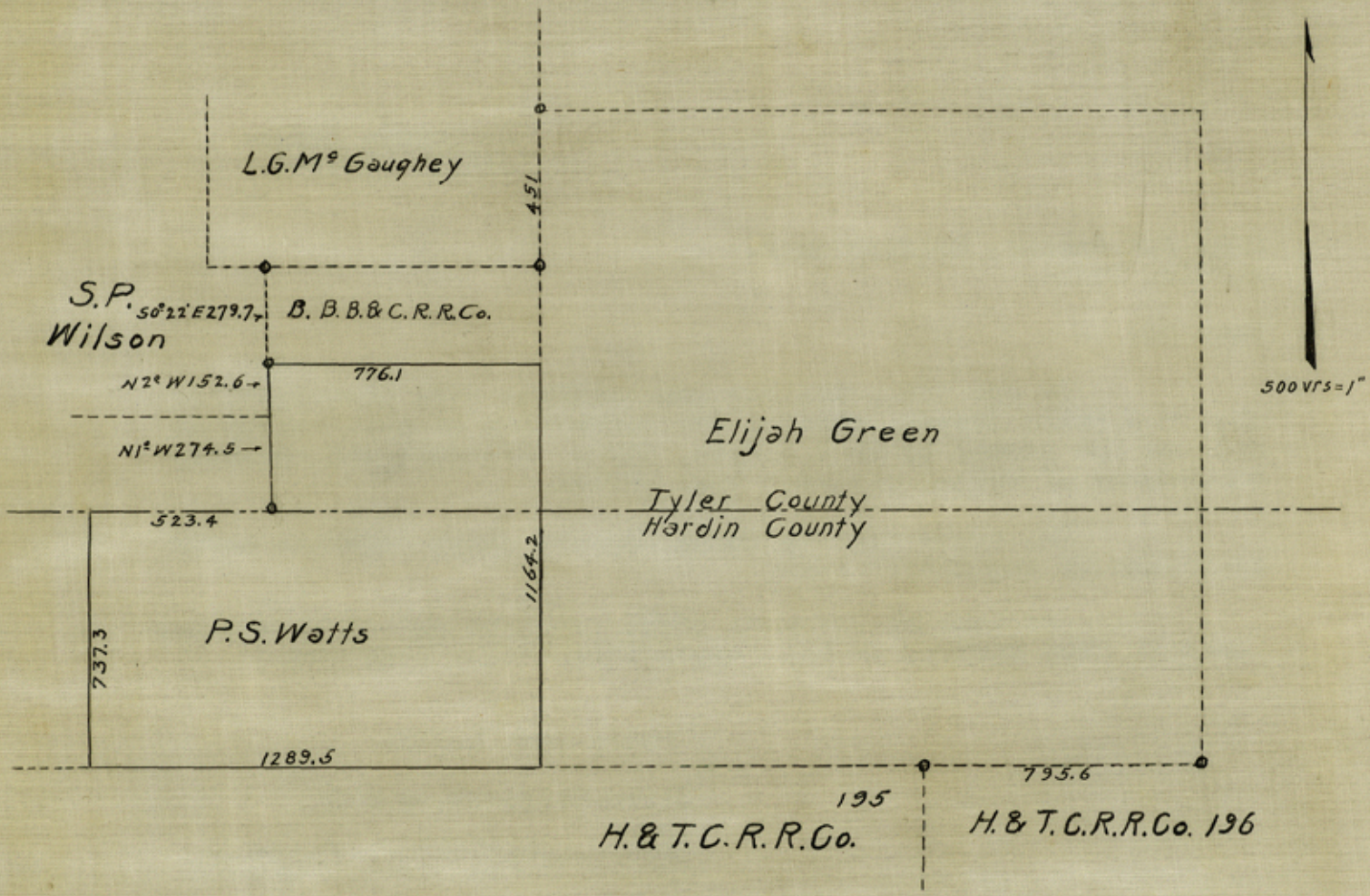
This county is very brushy in the greater part and the surveyors who located these lands had a difficult task to get through the undergrowth which in places is impassable and this condition prevails to a large extent in the vicinity and parts of the P.S.Watts survey, this area being in some of the thickest brush in East Texas.

Yours very truly,

J. M. Hyde

Licensed State Land Surveyor.





500 VRS = 1"

MAP OF RESURVEY OF
 — P.S. WATTS —
 HARDIN & TYLER COUNTIES

I, T.M. Hyde, Licensed State Land Surveyor, do hereby certify that the above map truly represents the P.S. Watts survey as found by me from a resurvey made by me on the ground. This the 26th day of June 1936.

T.M. Hyde
 Licensed State Land Surveyor

Hardin County Rolled Sketch No. "M.H."
 Surveyed of P.S. Watts in
 Hardin and Tyler Counties
 by T.M. Hyde
 Filed July 8, 1936
 Counter 75766

RECEIVED
 JUN 28 1936

146

Beaumont, Texas.
July 7 th 1936.

Hon. J.H.Walker, Commissioner.
Austin, Texas.

Dear Sir :-

We are today mailing you complete file pertaining to the P.S.Watts Survey, showing the correction of this survey as made on the ground by Mr T.M.Hyde, State Surveyor, who recently in Company of writer called at your office.

The above file is going forward under seperate cover in a tube by registered mail.

As soon as you have passed on this and other matters up with your office, we will appreciate letter from you..

Yours very truly.

Olive-Sternenberg & CO.,

Olas A. Sternenberg.

Olive-Sternenberg & CO.,
1460 Craig Street.
Beaumont, Texas.

RECEIVED

JUL 8 1936

REFERRED TO MAP

counter 45767

Hardin and Tyler Counties

June 26, 1936

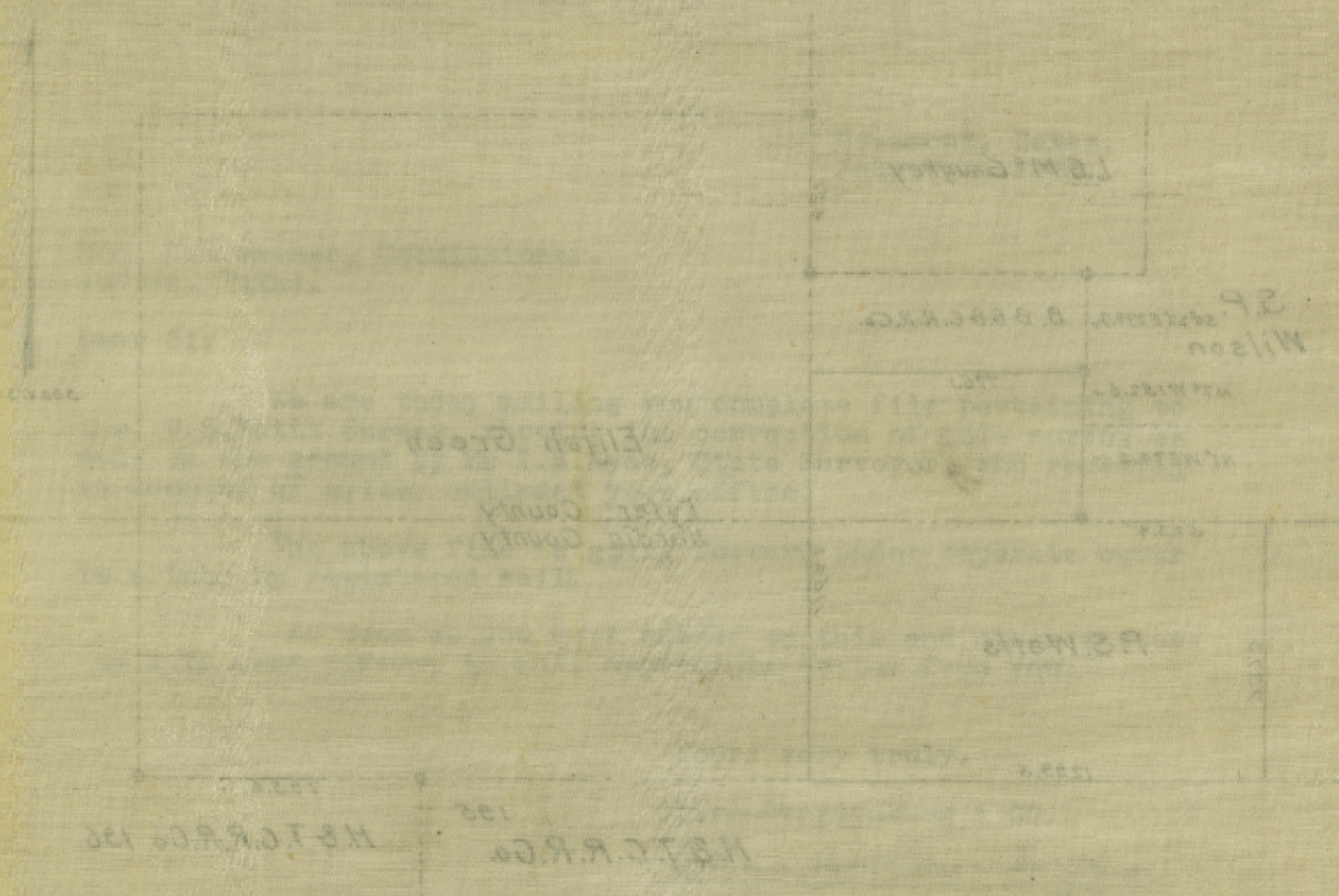
By T. M. Hyde

Filed July 8, 1936

(Report Within)

10-23-37
S.M.

counter 45768



MAP OF RESURVEY OF
S.P. WATTS
HARDIN & TYLER COUNTIES

I, T.M. Hyde, Licensed State Land Surveyor, do hereby certify that the above map truly represents the S.P. Watts survey as found by me from a resurvey made by me on the ground. This the 26th day of June 1936.

T.M. Hyde
Licensed State Land Surveyor

Hardin County Rolled Sketch No. "M.H."
Map of Re-survey of S.P. Watts in
Hardin and Tyler Counties

June 26, 1936

By T.M. Hyde
Filed July 8, 1936

(Report Within)

10-23-37
S.L.H.

counter 45768



Keep With
Hardin County Rollo Sketch No. "M.H."
Report of Re-Survey of S.P. Watts in
Hardin & Tyler Counties
By T.M. Hyde
Filed July 8, 1936

11-23-37
J.M.

counter 45769