

GERTRUDIS DIAZ
A-1276

Sur. 9-4-1839
by
D. M. Brown

5177.36 V. (Called 5098.2 V.)

22/504 D.R.

Sucker Rod

1012 V. (Called 1030 V.)

ROCK

Con. Mon.

ISLAND R.R.

14574 V.

J. E. PALMER
A-1053

Sur. 4-23-1878
by
Jas. A. Brown

RECEIVED

L. W. GIDEON
A-1018

Sur. 5-16-1876
by
Jas. A. Brown

C. W. NANNY
A-1047

Sur. 9-27-1877
by
Jas. A. Brown

W. A. NANNY
A-1045

Sur. 9-27-1877
by
Jas. A. Brown

J. W. NANNY
A-1046

Sur. 9-27-1877
by
Jas. A. Brown

1091.36 V. (Called 976 V.)

1065 V. (Called 970 V.)

897 V. (Called 888 V.)

900 V. (Called 888 V.)

884.92 V. (Called 888 V.)

279.08 V.

4126 V.

1896 V.

2405 V.

2233 V.

2064 V.

S. J. S47°E 1.8 V. / XIII

1/4" I.P.

1200 V.

1200 V.

1200 V.

1200 V.

1200 V.

1200 V.

1200 V.

1200 V.

1200 V.

1200 V.

1200 V.

2681.92
2664
17.92

EXHIBIT A

Andre J. Schwab
ANDRE J. SCHWAB
County Surveyor

SOUTH LINE OF GERTRUDIS DIAZ
A-1276
LEON COUNTY, TEXAS

SCALE 1" = 200 V.

October 1975

16 N 40 W

Counter 46535

W. H. M. 10
TECH COMPLY TEXAS
3731-A
SOUTH LINE OF CERTROD'S DASH

EXHIBIT A

RECEIVED
JAN 17 1976
General Land Office

RAMLAN E. L.
3501-A

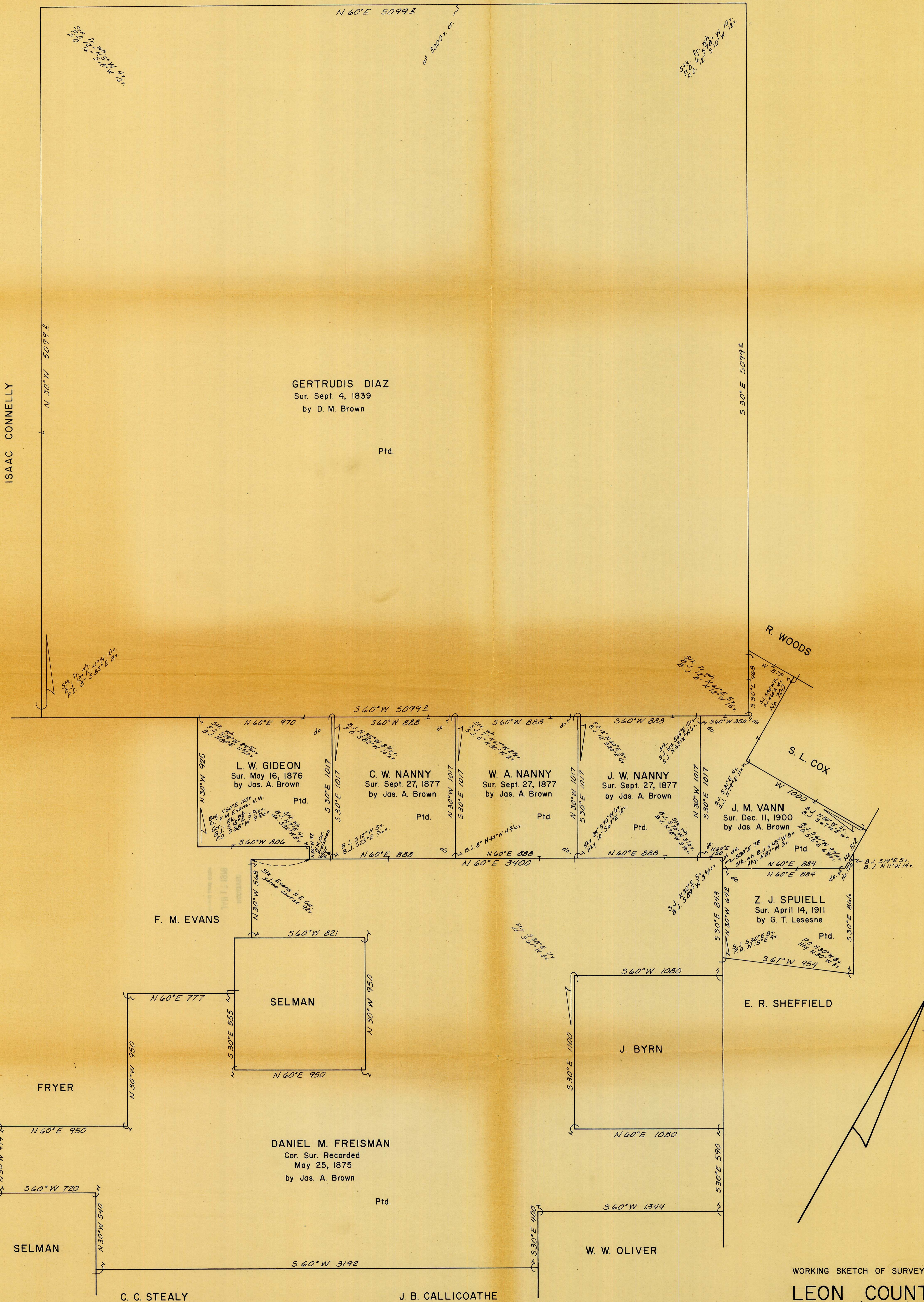
MOGDIS W. J.
3101-A

YIMAN W. C.
3401-A

YIMAN A. W.
3401-A

YIMAN W. L.
3401-A

SAND SIGNATURE
3731-A



GERTRUDIS DIAZ
 Sur. Sept. 4, 1839
 by D. M. Brown

Ptd.

L. W. GIDEON
 Sur. May 16, 1876
 by Jas. A. Brown
 Ptd.

C. W. NANNY
 Sur. Sept. 27, 1877
 by Jas. A. Brown
 Ptd.

W. A. NANNY
 Sur. Sept. 27, 1877
 by Jas. A. Brown
 Ptd.

J. W. NANNY
 Sur. Sept. 27, 1877
 by Jas. A. Brown
 Ptd.

J. M. VANN
 Sur. Dec. 11, 1900
 by Jas. A. Brown
 Ptd.

Z. J. SPUIELL
 Sur. April 14, 1911
 by G. T. Lesesne
 Ptd.

F. M. EVANS

SELMAN

FRYER

DANIEL M. FREISMAN
 Cor. Sur. Recorded
 May 25, 1875
 by Jas. A. Brown
 Ptd.

SELMAN

C. C. STEALY

J. B. CALLICOATHE

W. W. OLIVER

E. R. SHEFFIELD

WORKING SKETCH OF SURVEYS IN
LEON COUNTY

About 16 miles N40°E of Centerville, Texas

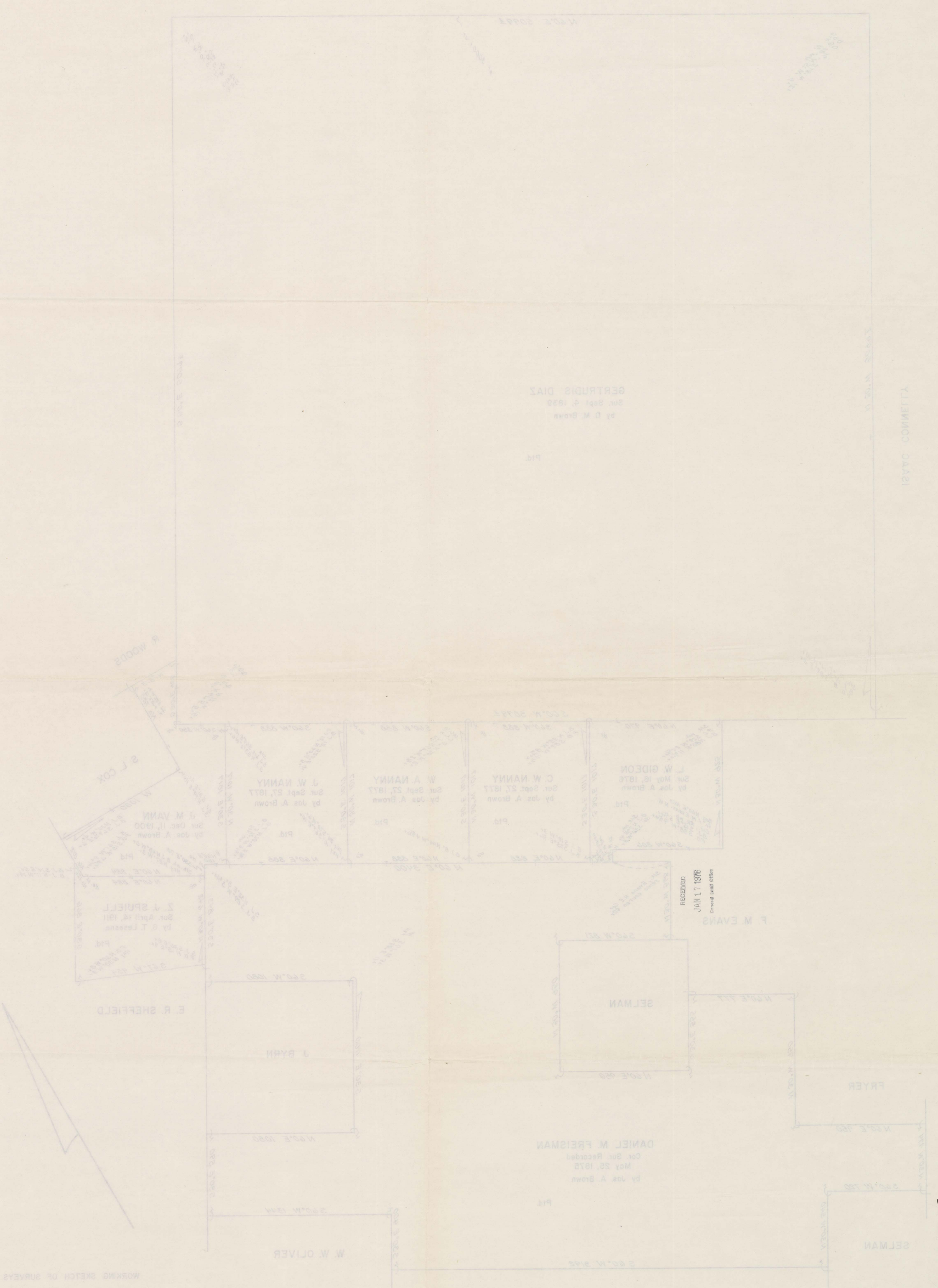
GENERAL LAND OFFICE - AUSTIN, TEXAS

Bob Armstrong - Commissioner

Scale 1" = 300 varas 8-6-75 B. C.

EXHIBIT B

LEON COUNTY
 GENERAL LAND OFFICE - AUSTIN, TEXAS
 Bob Armstrong - Commissioner
 Scale 1" = 300' near 5-1-15
 WORKING SKETCH OF SURVEYS IN



RECEIVED
 JAN 17 1976
 General Land Office

EXHIBIT B

Exhibit B

Leon Co. PLO SK. H-1-A

JOHN SKELTON

1 League
Sur. by Wm Roark, 10-13-84
Titled 10-13-84

MIGUEL SACCO

24,325,795 Sq. Yds.
Surveyed by Wm Roark, 9-15-1835
Titled 9-23-1835

MANUEL DE LOS SANTOS COY

Call 1/2 League
Surveyed Date of Survey Unknown
Titled 9-27-1887

DAVID COOK

Sur. by Wm Roark, 2-8-1835
Titled 11-8-35

JOHN DURST

Call 1/2 League & 25 Leagues
Sur. by William Roark, (Date Unknown)
Titled 5-9-1887

JEFFERSON WILSON

Call 1 Sine (642284 A)
Actual 566628 A
Sur. by L. Colvine, 10-26-1835
Titled 10-10-1835

HIRAM HAM

Call 320 A
Sur. by S. M. Noble, 10-27-1857
Titled 10-27-1860

WM. MEANS

Sur. by C. C. Grayson, 9-20-1868
Titled 10-15-1868

SAMUEL BOREN

Call 640 A
Sur. by S. M. Noble, 4-7-1859
Titled 3-31-1859

J. W. HOLMAN

Call 1/2 League
Sur. by L. Colvine, 10-21-1835
Titled 10-12-1835

DAVID COOK

Call 320 A
Sur. by Wm Roark, 12-10-1838
Titled 4-30-1855

FRANCIS F HIX

Call 640 A
Sur. by Wm Roark, 12-10-1838
Titled 4-30-1855

ASA DOSSETT

Call 640 A
Sur. by Wm Roark, 11-16-1838
Titled 11-10-1845

B. C. P. HARRELL

Call 320 A
Sur. by Wm Roark, 7-1-1840
Titled 4-18-1851

MAP OF
JEFFERSON WILSON &
ADJACENT SURVEYS
NACOGDOCHES CO., TEX.

Scale: 1" = 300 yds. Variation: 8°45' E

RECEIVED
DEC 20 1898
GENERAL LAND OFFICE
I, E. S. Ross, a Licensed State Land Surveyor, do hereby certify that this plat truly and correctly represents a survey made by me on the ground and completed November 10, 1898.
E. S. Ross
LICENSED STATE LAND SURVEYOR
No. 153
1898

352 / 315 L. C. D. R. GEORGE & ERNEST SARANDOS

ROBERT WOOD
A-932

FREESTONE CO.

Wm. LADD
A-1406

LEON CO.

GERTRUDIS DIAZ
A-1276

Sept. 4, 1839
by D. M. Brown

(Culled 5099.2 V.)
5117.36 V.

N 59° 25' 58" E
884.88 V.
Found
1.4" I.P. N 29° 42' 40" W 73.1
8" P.O. S 27° E 28.1 V.

J. M. VANN
A-1307

Found
6" P.O. N 58° 40' W 2.5 V. I.A.B.
4" Hickory S 10° W 5.3 V. I.X.I.
Found
2" P.O. S 23° 30' E 7.2 V. I.X.I.
20" P.O. S 88° E 5.8 V. I.A.M.
Set 2" I.P.
8" P.O. N 77° E 3.67 V. I.X.I.
6" P.O. S 50° 44' W 3.83 V. I.X.I.

Z. J. SPRUILL
A-1363

Set Con. Mon. w/ brass cap
mkd. No. 1 7/234 C.S.R.
9" P.O. N 82° E 4.09 V. I.X.I.
10" P.O. S 67° E 6.07 V. I.X.I.
6" P.O. S 35° E 3.55 V. I.X.I.

E. R. SHEFFIELD
A-859

DANIEL M. FREISMAN
A-268

May 25, 1875
Jos. A. Brown

L. W. GIDEON
A-1018

May 16, 1876
by Jos. A. Brown

J. W. NANNY
A-1046

883
2664

FM. EVANS
A-266

1/344 C.S.R.

Found
4" Cedar Stake
14" B.J. Dead R. Lying Down S 40° W 3.72 V. (6/139 C.S.R.)
3" B.J. in Fence Corner S 60° E 6.48 V.

Filed for record in my office, the 16 day of January, 1976, at 1:00 o'clock A.M. and duly recorded the 16 day of January, 1976, in book 7, page 234-A of the Field Note Records of LEON COUNTY, TEXAS.

Andre J. Schwab
County Surveyor

I, Andre J. Schwab, County Surveyor of Leon County, Texas do hereby certify that this plot truly represents a survey made by me on the ground, according to law, on the 31st day of October, 1975.
GIVEN UNDER MY HAND & SEAL of office this 6th day of January, 1976.

16 mi N 40 W
SURVEY OF
178.02 ACRES
IN
LEON & FREESTONE COUNTY
SCALE: 1" = 200 V. OCTOBER 13, 1975

counter 46538

1-336
GERTUDIS DIAZ
SUR. 9-4-1839
By D.M. BROWN

1317
W.A. NANNY

P-1316
J.W. NANNY
SUR. 9-27-1877
By J.A. BROWN

65095
J.M. VANN
SUR. 11-11-1900
By J.A. BROWN

1-222
DANIEL M. FRISMAN
SUR. 5-25-1875
By J.A. BROWN

3-5094
JOHN BYRNS

1142
E.R. SHEFFIELD
SUR. 11-1-1873
By J.A. BROWN

P-1844
M.T. McMillan

3-232
ROBERT WOOD
SUR. 6-5-1848
By JOHN PATRICK

3-4660
WM J. LODD
Ptd

1812
S.L. COX
SUR. 5-13-1878
By J.A. BROWN

SURVEY WORKING DRAWINGS FOR

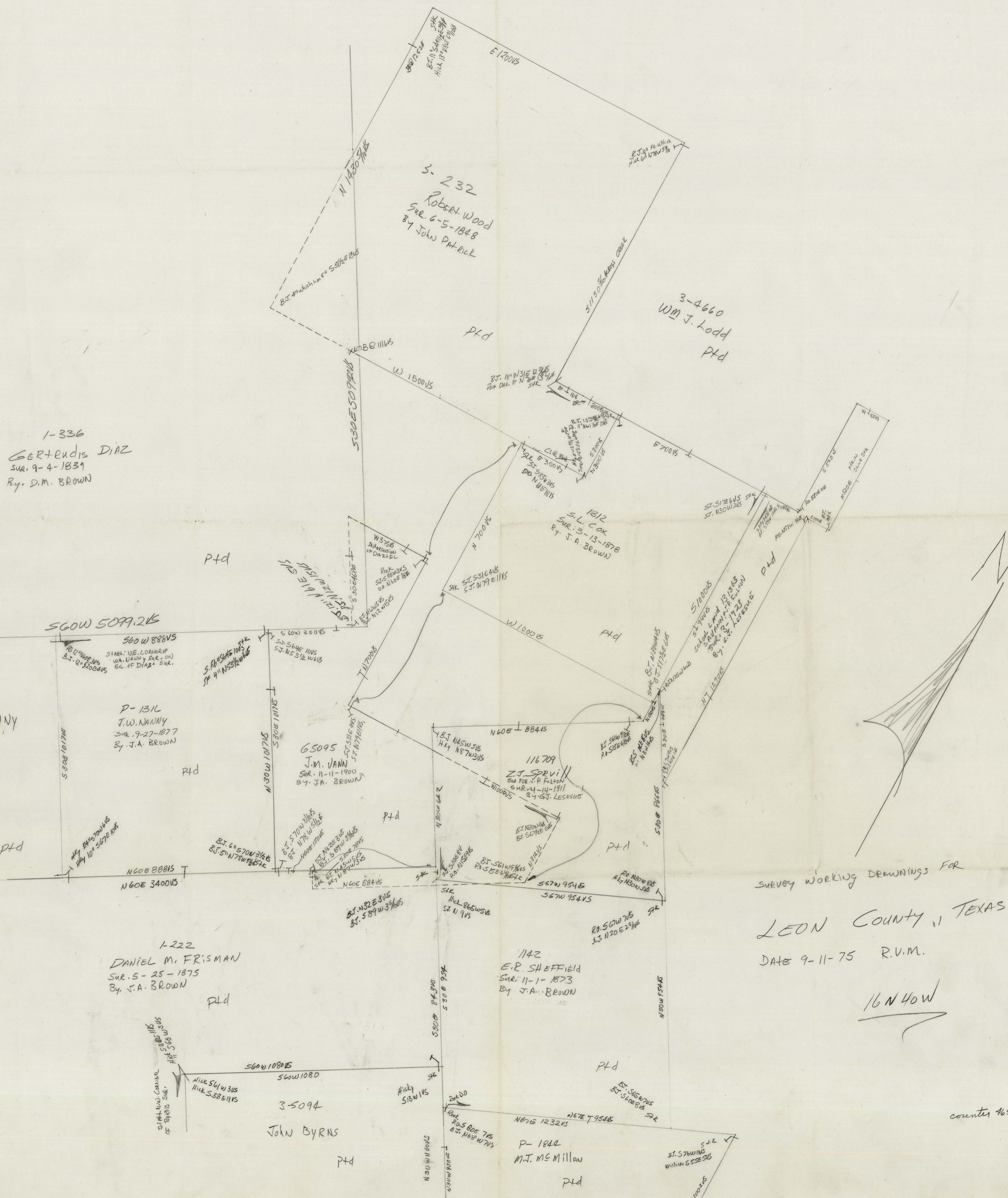
LEON COUNTY, TEXAS

DATE 9-11-75 R.V.M.

16N40W

counter 16539

Leon Co. 67D. 24th 14-4



TEON COUNTY, TEXAS
DATE 4-11-22 B.V.W.
J.M.W.

showed meeting demands for

J.M.W.

