

LOVING CO.

RLD. SK. 11 (ff)

counter 96605

TOWNSHIP 2

BLOCK 28

PUBLIC SCHOOL LAND
BLOCK 29

PUBLIC SCHOOL LAND
BLK. C27

INDEX - Loving Co. Rtd. Sk. 11 (ff)

UNIVERSITY LAND
BLOCK 19

BLK. F-136064

BLK. F-136063

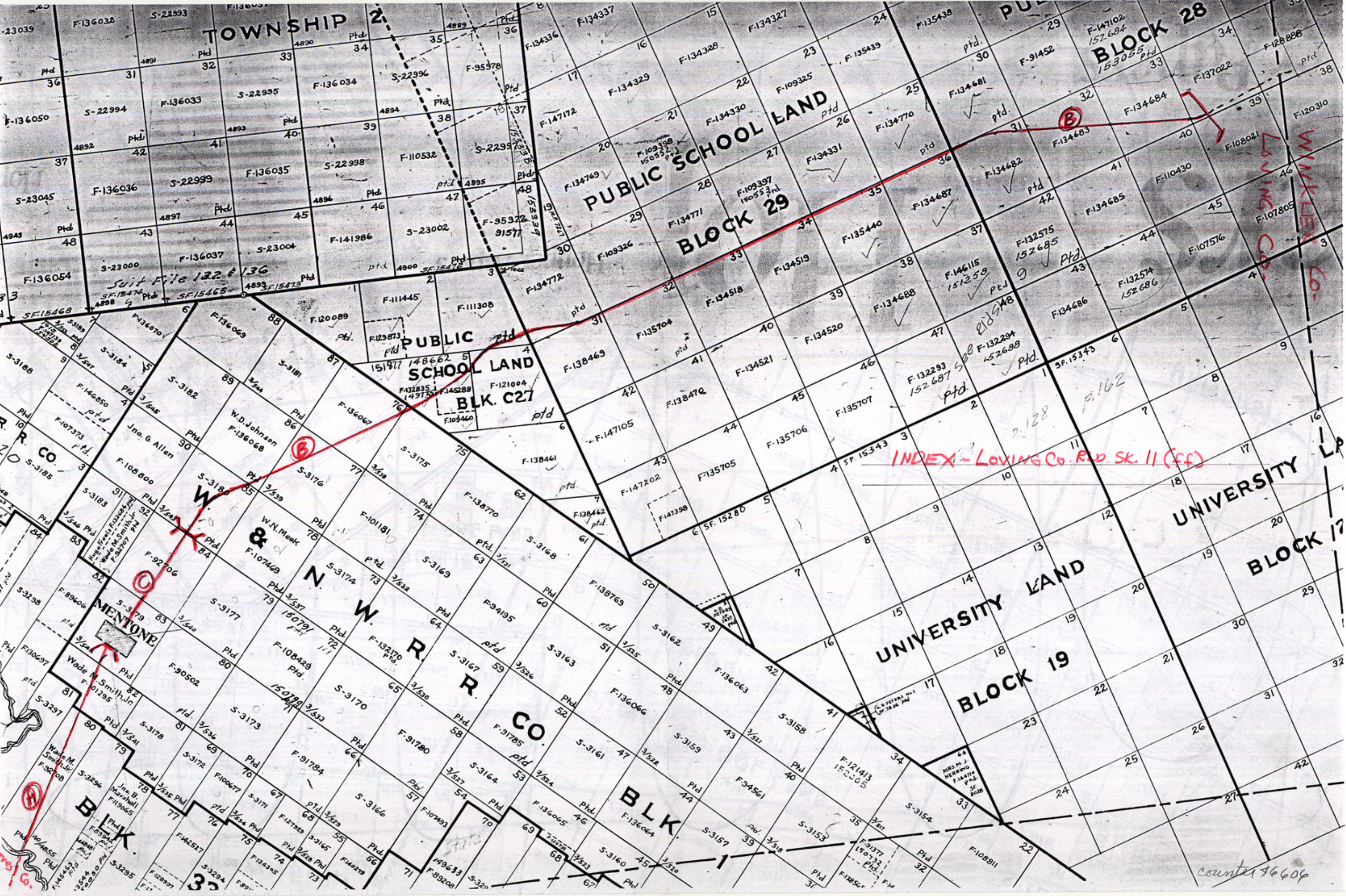
MENTONE

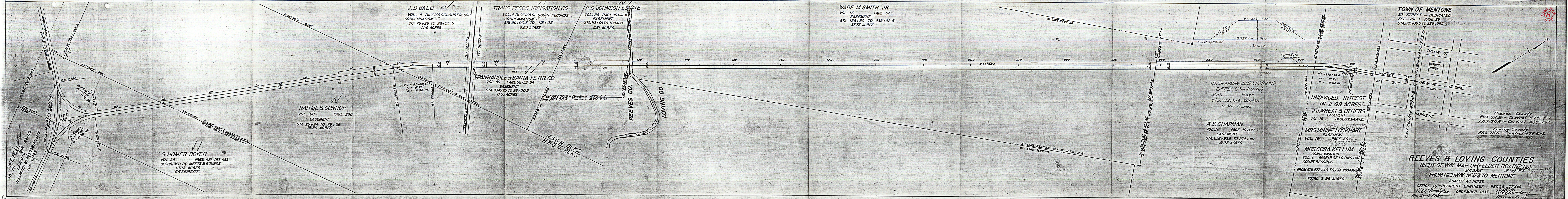
UNIVERSITY LAND
BLOCK 17

UNIVERSITY LAND
BLOCK 17

WINKLER & LOVING CO.

counter 76609





J. D. BALL
 VOL. 4 PAGE 166 OF COURT RECORDS
 CONDEMNATION AT
 STA. 79+26 TO 93+99.5
 4.06 ACRES

TRANS PECOS IRRIGATION CO.
 VOL. 4 PAGE 165 OF COURT RECORDS
 CONDEMNATION AT
 STA. 96+00.5 TO 113+05
 5.63 ACRES

R.S. JOHNSON ESTATE
 VOL. 88 PAGE 163-164
 EASEMENT
 STA. 113+05 TO 128+80
 5.61 ACRES

WADE M. SMITH JR.
 VOL. 16 PAGE 57
 EASEMENT
 STA. 128+80 TO 238+92.5
 37.75 ACRES

TOWN OF MENTONE
 80' STREET - DEDICATED
 SEE VOL. 1 PAGE 28
 STA. 285+38.5 TO 289+58.5

W.E. BELL
 VOL. 89 EASEMENT
 DESCRIBED BY MEETS & BOUNDS
 1.08 ACRES

S. HOMER BOYER
 VOL. 88 PAGE 481-482-483
 DESCRIBED BY MEETS & BOUNDS
 10.18 ACRES
 EASEMENT

RATHJE & CONNOR
 VOL. 88 PAGE 330
 EASEMENT
 STA. 29+94 TO 79+26
 15.84 ACRES

PANHANDLE & SANTA FE R.R. CO.
 VOL. 89 PAGE 52-53-54
 EASEMENT
 STA. 93+99.5 TO 96+00.5
 0.55 ACRES

H & G. N. BLK 2
H & G. N. BLK 3

A.S. CHAPMAN & N.F. CHAPMAN
 DEED (Park Site)
 Vol. Page
 Sta. 264+20 to 269+20
 0.803 Acres

A.S. CHAPMAN
 VOL. 16 PAGE 20 & 21
 EASEMENT
 STA. 238+92.5 TO 272+40
 9.22 ACRES

UNDIVIDED INTREST
 IN 2.99 ACRES
J.J. WHEAT & OTHERS
 EASEMENT
 VOL. 16 PAGES 23-24-25

J.J. WHEAT & OTHERS
MRS. MINNIE LOCKHART
 EASEMENT
 VOL. 16 PAGE 60
 STA. 272+40 TO 285+38.5
 2.99 ACRES

MRS. CORA KELLUM
 CONDEMNATION
 VOL. 1 PAGE 19 OF LOVING CO.
 COURT RECORDS.
 FROM STA. 272+40 TO STA. 285+38.5
 TOTAL 2.99 ACRES

Reeves County
 FAS 711 B - Control 479-1-1
 FAS 711 A - Control 479-2-2

Loving County
 FAS 711 A - Control 479-2-2
 FAS 711 B - Control 479-1-1

REEVES & LOVING COUNTIES
 RIGHT OF WAY MAP OF (FEEDER ROAD) 276
 US 285
 FROM HIGHWAY NO. 272 TO MENTONE
 SCALES AS NOTED
 OFFICE OF RESIDENT ENGINEER PEGOS TEXAS
 DECEMBER 1937
 Resident Engr. *G.B. Steiner*
 Division Engr.

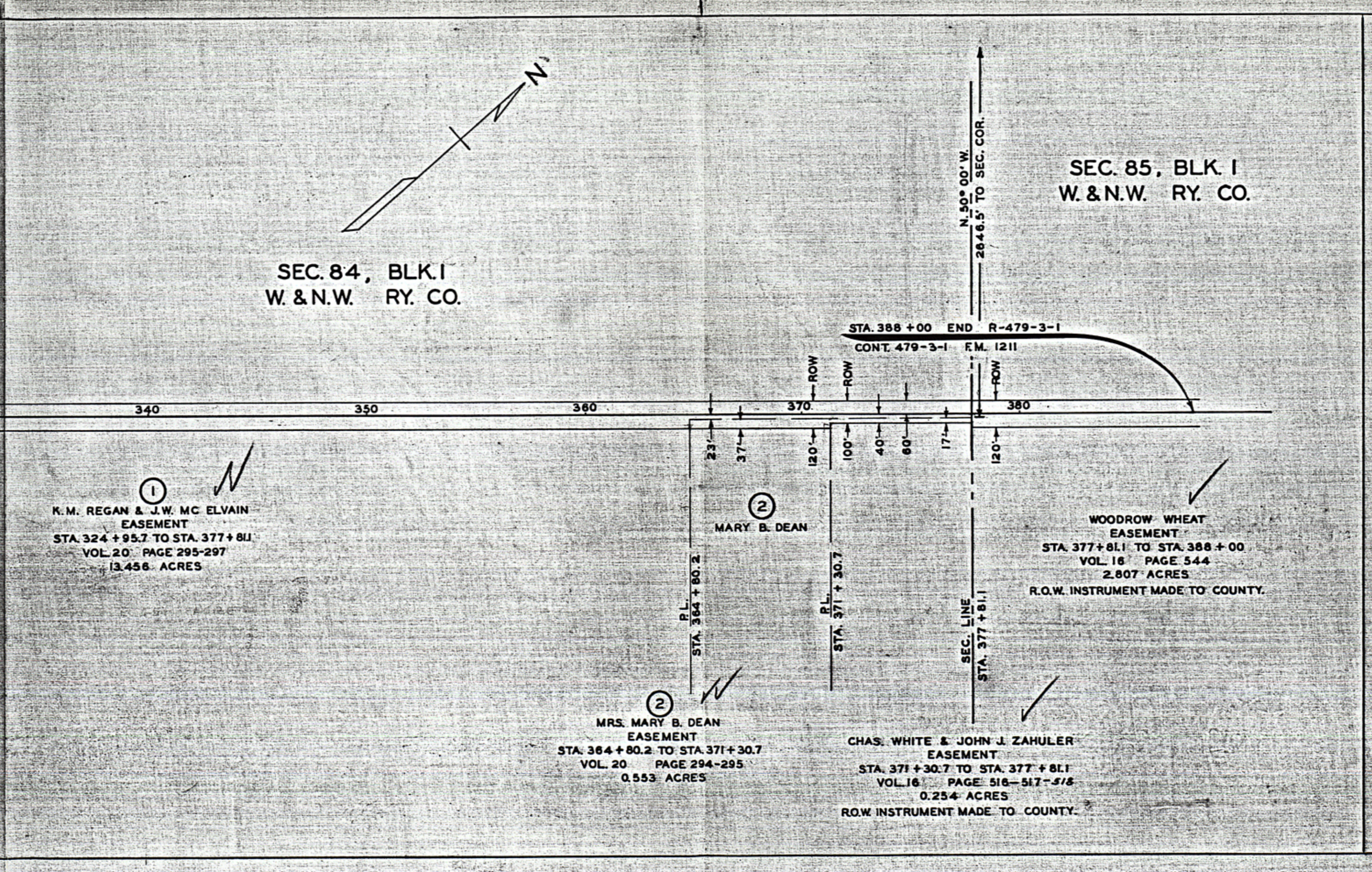
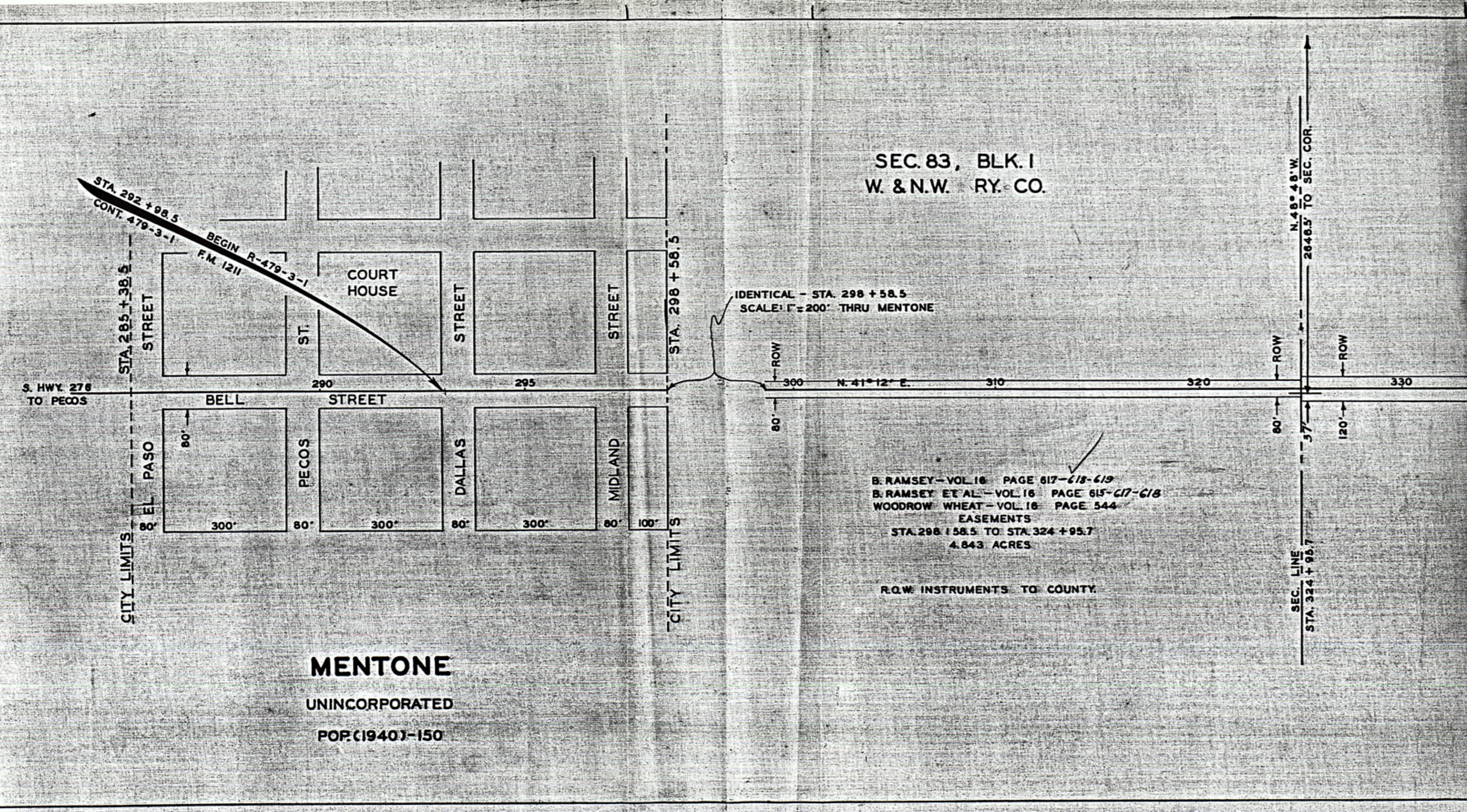


TEXAS STATE HIGHWAY DEPARTMENT

RIGHT OF WAY MAP OF
LOVING COUNTY
F.M. HIGHWAY NO. 1211
FROM MENTONE TO R.G.B. OIL CAMP
R-479-3-1 — LENGTH 1.799 MILES

OFFICE OF RESIDENT ENGINEER — PECOS, TEXAS

DISTRICT 6
JUNE 1950
SCALE: 1"=400'



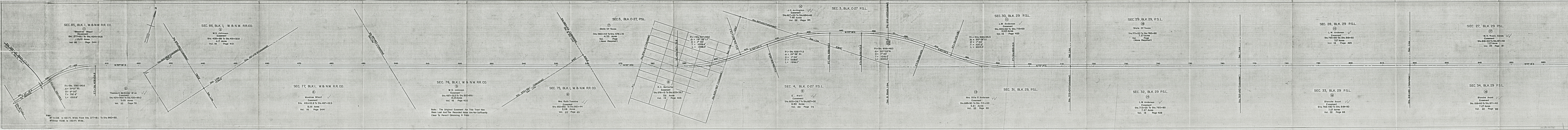
CORRECT: 6/21 1950

K.R. Titus
RESIDENT ENGINEER

RECOMMENDED FOR APPROVAL: Jan. 4 1951

L.D. Cabaniss
DISTRICT ENGINEER

Counter 16609



SEC. 85, BLK. I, W. & N.W. RR. CO.

Woodrow Wheat Easement
Sta. 377+81.1 To Sta. 424+56.6
15.03 Acres
Vol. 16 Page 544

SEC. 86, BLK. I, W. & N.W. RR. CO.

W.D. Johnson Easement
Sta. 435+89 To Sta. 451+02.8
4.17 Acres
Vol. 16 Page 401

SEC. 5, BLK. C-27, P.S.L.

State Of Texas
Sta. 560+44 To Sta. 576+15
4.33 Acres
Vol. Page
(None Required)

SEC. 30, BLK. 29 P.S.L.

L.W. Anderson Easement
Sta. 654+62 To Sta. 713+00
12.63 Acres
Vol. 16 Page 425

SEC. 29, BLK. 29, P.S.L.

State Of Texas
Sta. 713+00 To Sta. 765+80
7.27 Acres
Vol. Page
(None Required)

SEC. 28, BLK. 29 P.S.L.

L.W. Anderson Easement
Sta. 765+80 To Sta. 818+60
7.27 Acres
Vol. 16 Page 425

SEC. 27, BLK. 29 P.S.L.

M.H. Reed, Estate Easement
Sta. 818+60 To Sta. 871+40
7.27 Acres
Vol. 22 Page 81

SEC. 77, BLK. I, W. & N.W. RR. CO.

Thomas K. McGinley et ux Easement
Sta. 424+96.6 To Sta. 435+89.0
3.00 Acres
Vol. 22 Page 78

SEC. 76, BLK. I, W. & N.W. RR. CO.

W.D. Johnson Easement
Sta. 497+52.3 To Sta. 552+89.1
15.25 Acres
Vol. 16 Page 402

SEC. 75, BLK. I, W. & N.W. RR. CO.

Mrs. Ruth Tomkins Easement
Sta. 552+89.1 To Sta. 560+44
2.08 Acres
Vol. 22 Page 83

SEC. 4, BLK. C-27 P.S.L.

E. Hall Easement
Sta. 603+39.7 To Sta. 627+00
6.50 Acres
Vol. 22 Page 79

SEC. 31, BLK. 29, P.S.L.

Mrs. Ollie P. Anderson Easement
Sta. 688+90 To Sta. 713+00
3.21 Acres
Vol. 22 Page 80

SEC. 32, BLK. 29 P.S.L.

L.W. Anderson Easement
Sta. 713+00 To Sta. 765+80
7.27 Acres
Vol. 16 Page 428

SEC. 33, BLK. 29 P.S.L.

Blanche Avant Easement
Sta. 765+80 To Sta. 818+60
7.27 Acres
Vol. 22 Page 88

SEC. 34, BLK. 29 P.S.L.

Blanche Avant Easement
Sta. 818+60 To Sta. 871+40
7.27 Acres
Vol. 22 Page 88

Note: The Original Easement For This Tract Has Been Lost And The Recorded Notes Are Not Sufficiently Clear To Permit Obtaining A Copy.

Note:
R.O.W. Is 120 Ft. Wide From Sta. 377+81.1 To Sta. 960+50.
Other R.O.W. Is 150 Ft. Wide.

TEXAS STATE HIGHWAY DEPARTMENT
RIGHT OF WAY MAP
LOVING COUNTY
F.M. HIGHWAY NO. 1211

FROM FM. ROAD 2 MI. EAST MENTONE - TO - WINKLER COUNTY LINE

LENGTH 14.862 MILES

OFFICE OF RESIDENT ENGINEER - PECOS, TEXAS
DISTRICT 6
JANUARY, 1953
SCALE: 1" = 400'

CORRECTED Feb 7-1953
[Signature]
RESIDENT ENGINEER
RECOMMENDED FOR APPROVAL Feb 27, 1953
[Signature]
DISTRICT ENGINEER

