

NUECES CO. RLD. SK. # 27B.

(Flat Folder)

PORT ARANSAS - CORPUS CHRISTI WATERWAY

AVERY POINT TURNING BASIN to TULE LAKE TURNING BASIN

— DUANE ORR, Dist. Engr. —

Filed Aug. 16 - 1948.

See Refugio S-1922.

*counter 47609*

NUECES BA

NUECES RIVER

CLARA DRISCOLL TURNING BASIN

TULE LAKE

Tx 934

NORTH BOUNDARY OF NAVIGATION DISTRICT PROPERTY

J. GARRET  
W. L. POPE

HOUSTON OIL CO.

W. S. MCGREGOR EST.

FRED QUIRES

S. AGARINO

F. J. SMITH

T. C. DUNN

MAGGIE HARRELL

J. B. SEDWICK

A. J. ALEXANDER

L. B. HUTCHINS

E. B. COLE

SALLY DAGE

W. W. WALTON

W. W. WALTON

A. STONE OLEER

MAGGIE HARRELL

J. B. HUNTER

C. PEDKINS  
LAURA GASSE

W. W. WALTON

ATLEE & W. McCAMPBELL

WEIL BROS.

WEIL BROS.

MARY ANDRILL

NEIL BROS.

CONTINENTAL OIL CO.

CORN PRODUCTS  
REFINING CO.

W. W. MEANY

H. C. COLLEGE

W. W. MEANY

M. W. MEANY

M. W. MEANY

M. W. MEANY

M. W. MEANY

M. W. MEANY

M. W. MEANY

M. W. MEANY

M. W. MEANY

M. W. MEANY

M. W. MEANY

M. W. MEANY

M. W. MEANY

M. W. MEANY

M. W. MEANY

M. W. MEANY

M. W. MEANY

M. W. MEANY

counter 47605

Sherrill  
NUECES Co. RLD SIK. #27B



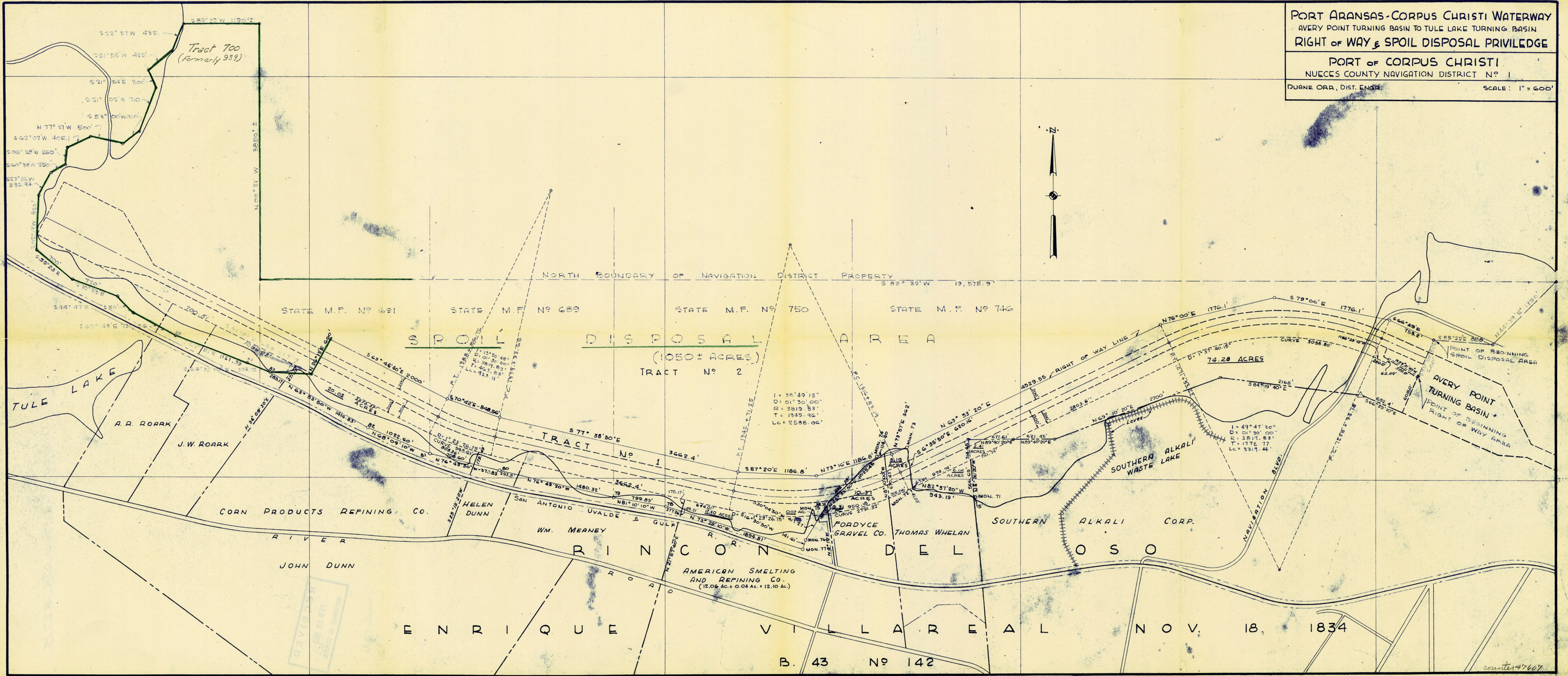
RECEIVED  
FEB 23 1951  
REFERRED TO SCHOOL

counter 77606

PORT ARANSAS-CORPUS CHRISTI WATERWAY  
 AVERY POINT TURNING BASIN TO TULE LAKE TURNING BASIN  
 RIGHT OF WAY & SPOIL DISPOSAL PRIVILEGE

PORT OF CORPUS CHRISTI  
 NUECES COUNTY NAVIGATION DISTRICT NO. 1

DUANE ORR, DIST. ENGR. SCALE: 1" = 600'



ENRIQUE VILLAREAL NOV. 18, 1834

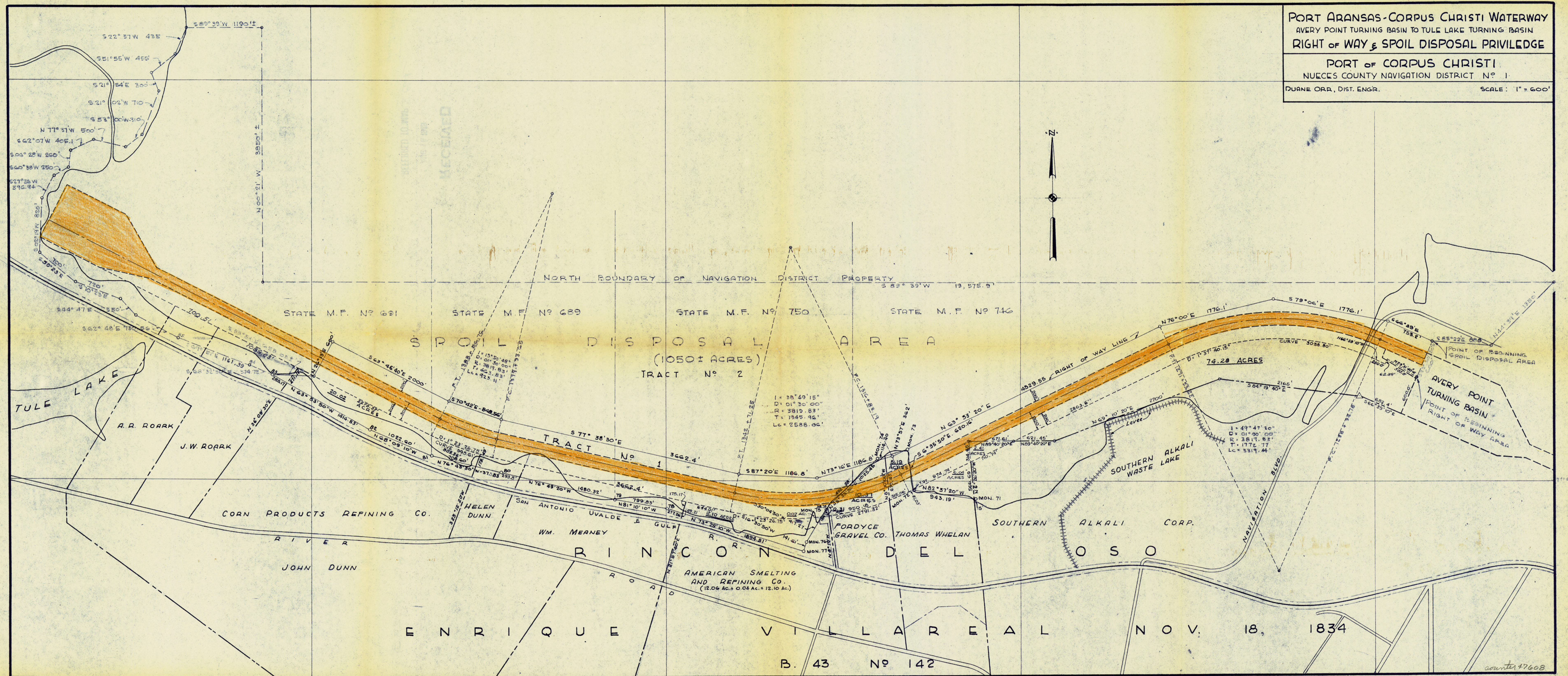
B. 43 NO. 142

count 47607

PORT ARANSAS-CORPUS CHRISTI WATERWAY  
AVERY POINT TURNING BASIN TO TULE LAKE TURNING BASIN  
RIGHT OF WAY & SPOIL DISPOSAL PRIVILEGE

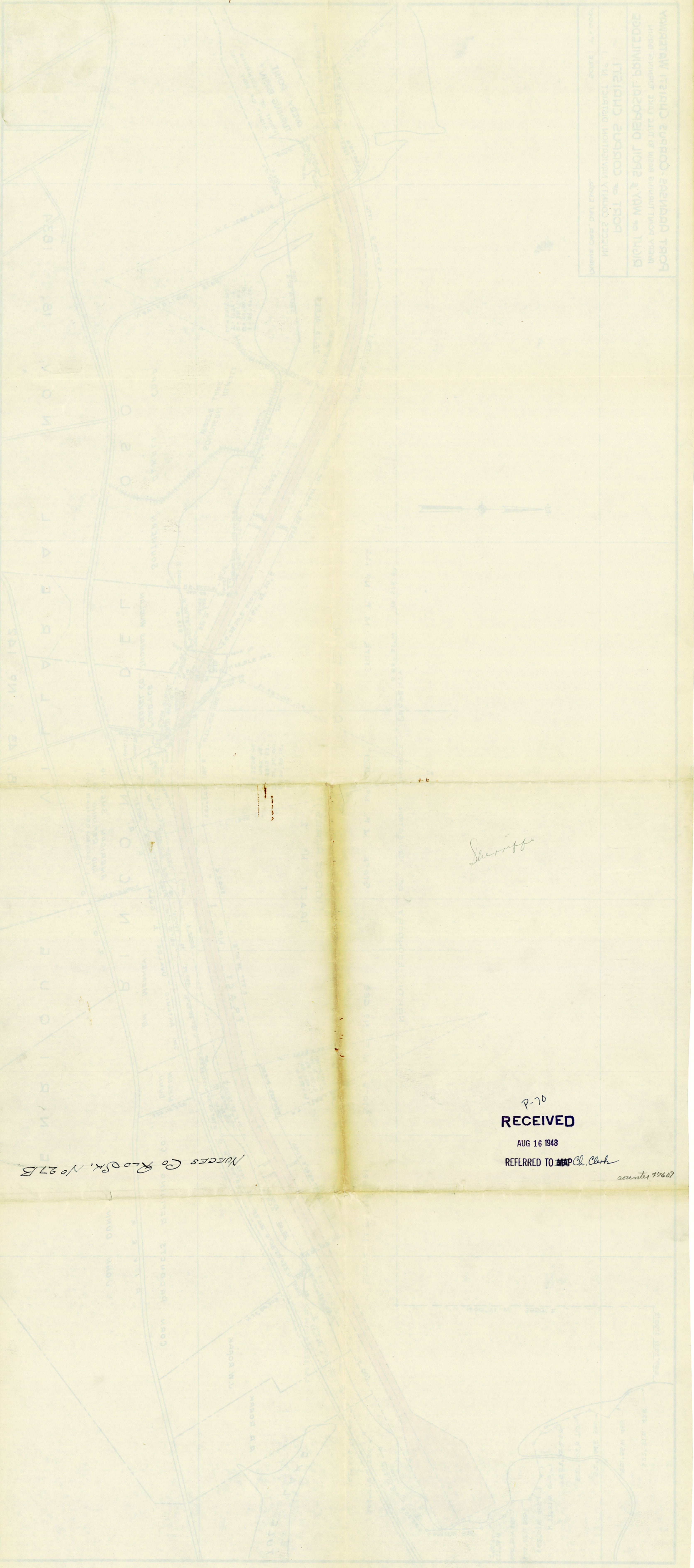
PORT OF CORPUS CHRISTI  
NUECES COUNTY NAVIGATION DISTRICT N° 1

DUANE ORR, DIST. ENGR. SCALE: 1" = 600'



B. 43 N° 142

counter 47608



NUECES CO RD 5K, No 27 B

*Sherriff*

2-70

**RECEIVED**

AUG 16 1948

REFERRED TO ~~MAP~~ *Ch. Clark*

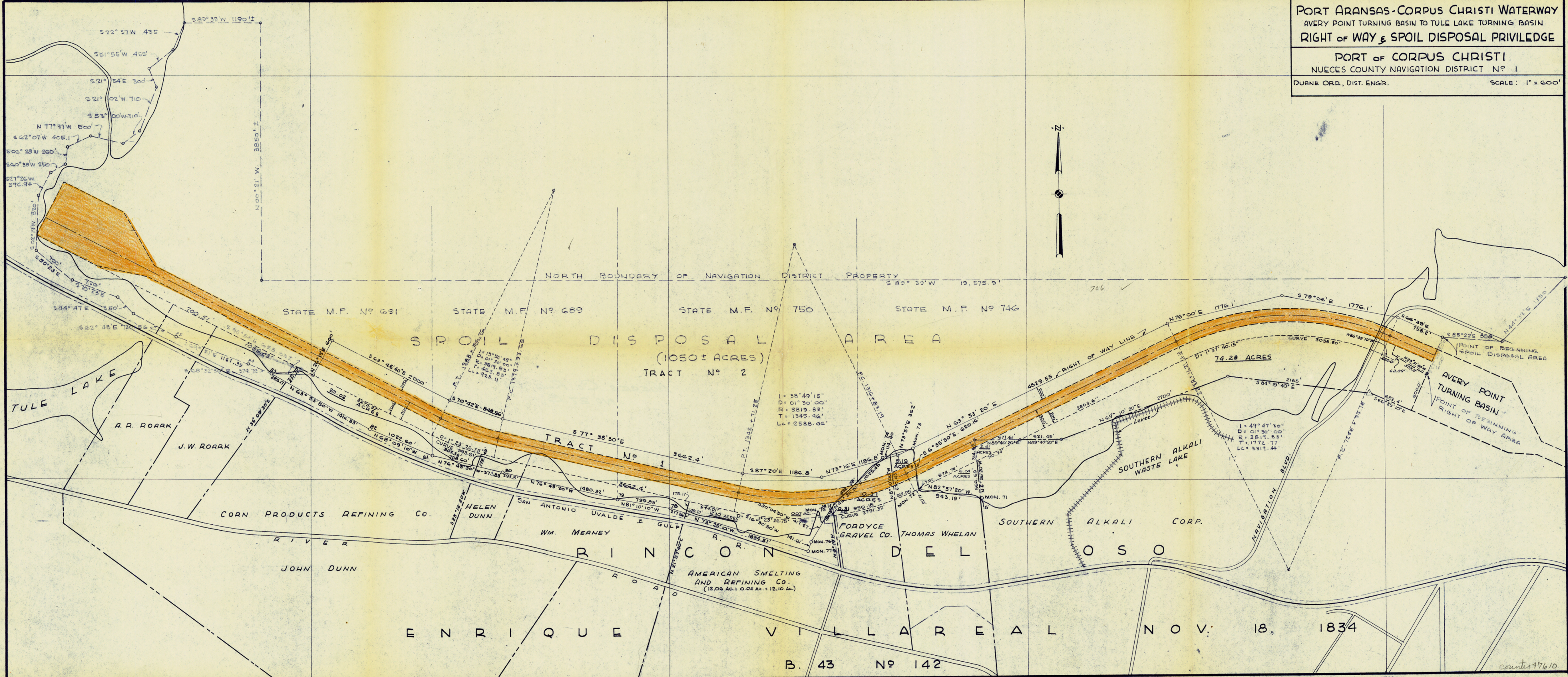
194847 received

UNITED STATES GOVERNMENT  
 DEPARTMENT OF THE INTERIOR  
 GEOLOGICAL SURVEY  
 BOSTON DISTRICT OFFICE  
 100 STATE STREET  
 BOSTON, MASSACHUSETTS

PORT ARANSAS-CORPUS CHRISTI WATERWAY  
 AVERY POINT TURNING BASIN TO TULE LAKE TURNING BASIN  
 RIGHT OF WAY & SPOIL DISPOSAL PRIVILEGE

PORT OF CORPUS CHRISTI  
 NUECES COUNTY NAVIGATION DISTRICT N<sup>o</sup> 1

DUANE ORR, DIST. ENGR. SCALE: 1" = 600'



counter 47610

Registered in name of

7-70

# PORT OF CORPUS CHRISTI

## NUECES COUNTY NAVIGATION DISTRICT

*Shiriffs!*



BYRD HARRIS  
PORT DIRECTOR  
J. N. BARNES  
ASS'T SECRETARY—  
AUDITOR

NAVIGATION  
COMMISSIONERS  
RICHARD KING, CHAIRMAN  
JOHN W. KELLAM, VICE-CHAIRMAN  
EDWIN F. FLATO, SECRETARY

MARCELLUS ECKHARDT  
COUNSEL  
DUANE ORR  
DIST. ENGINEER  
JOSEPH LARACY  
HARBORMASTER

### CORPUS CHRISTI, TEXAS

ADDRESS ALL OFFICIAL BUSINESS TO  
PORT DIRECTOR  
P. O. BOX 1541  
CORPUS CHRISTI, TEXAS

August 12, 1948.

*T-1413 WITH NUECES CO RLD SK #27B*

Mr. Bascom Giles,  
State Land Commissioner,  
Austin, Texas.

Dear Mr. Giles:

Attached hereto are two copies of the final channel location to be constructed from Avery Point Turning Basin to the vicinity of Tule Lake by Nueces County Navigation District No. 1. This information is for your files.

Yours very truly,

*Duane Orr*  
Duane Orr,  
District Engineer.

DO/ek  
encl.(2)

# RECEIVED

AUG 16 1948

REFERRED TO **MAP** *Chief Clerk*

*counter 77611*