

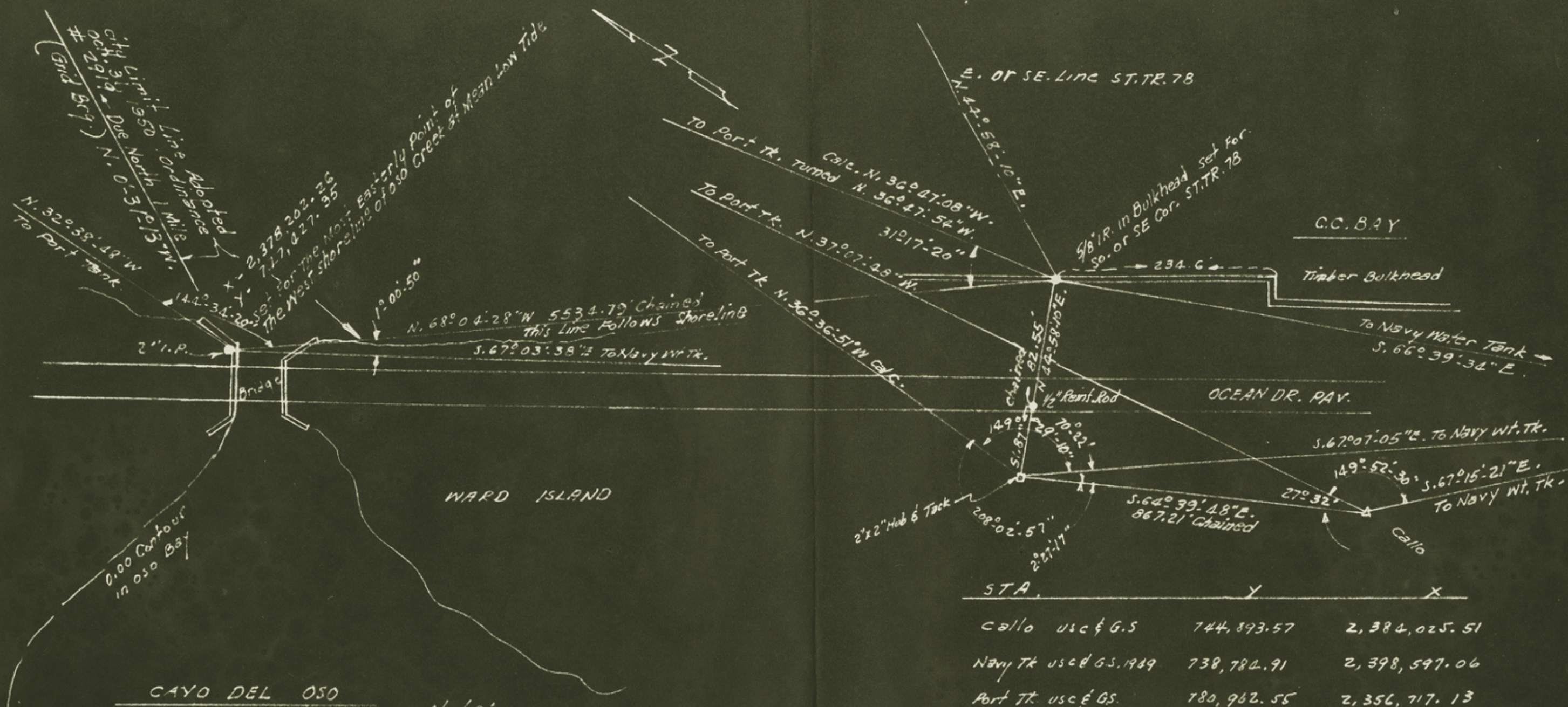
FLAT FOLDER
NUECES CO. ROLLED SKETCHES
NO. 40.

Corpus Christi Area

By Jones and Van Pelt Sept. 21, 1962

Filed Aug. 16, 1963

counter 17850



Note:-
All Angles shown Are 3 Angle
Averages.

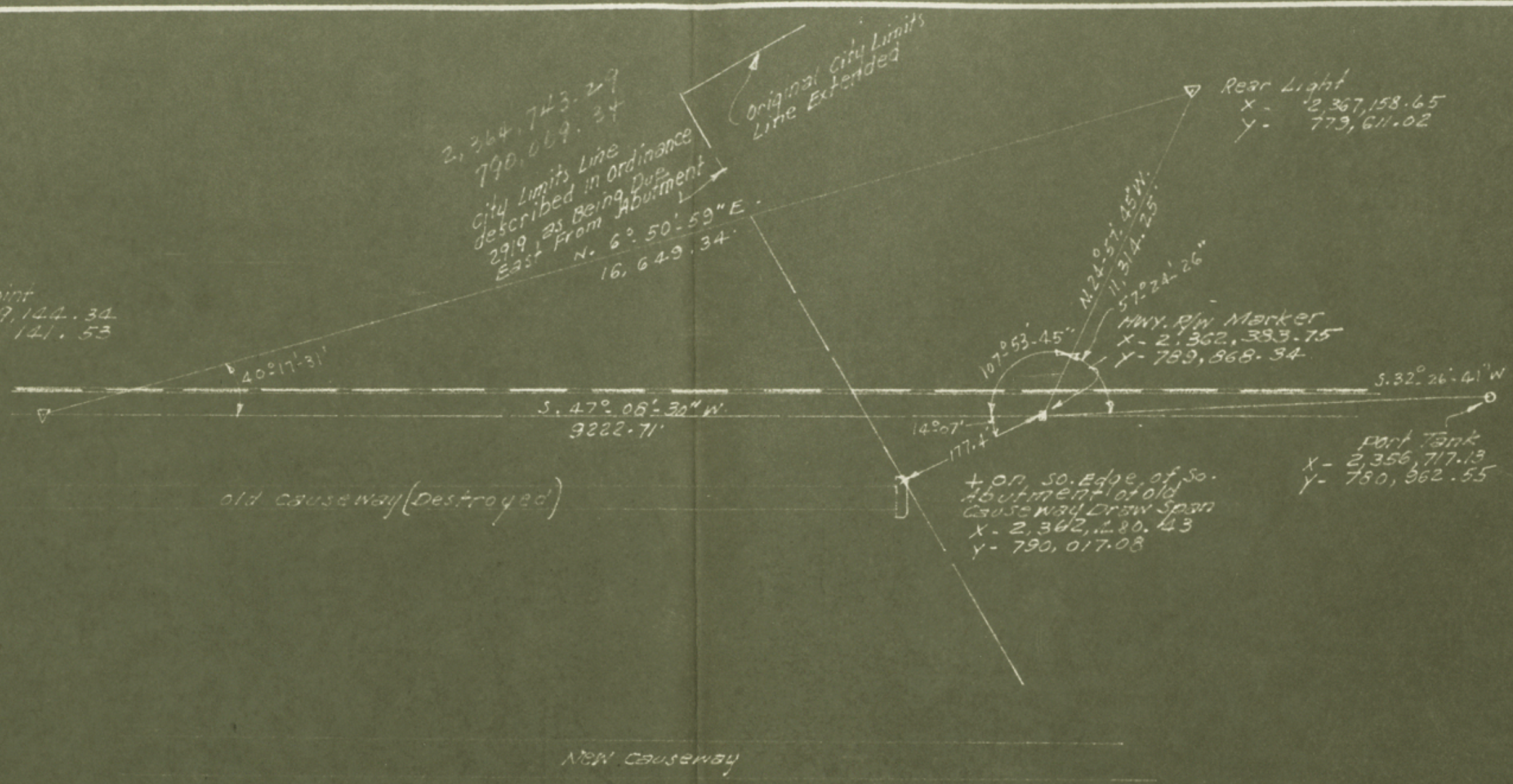
STA.	Y	X
Callo usc & G.S.	744,893.57	2,384,025.51
Navy Tk usc & G.S. 1949	738,784.91	2,398,597.06
Port Tk. usc & G.S.	780,962.55	2,356,717.13
2x2 Hub & Tack	745,265.55	2,383,241.72
1/2" I.R. in Pav.	745,302.25	2,383,278.38
5/8" I.R. in Bulkhead	745,360.65	2,383,336.72
2" Pipe	717,427.35	2,378,202.26

WORK SHEET No 1
NOT TO SCALE

DRAWN	CHECKED	DATE	SCALE	SURVEYED	DRWG. NO.
					B
JONES & VAN PELT, INC. SURVEYORS CORPUS CHRISTI, TEXAS				DATE	PAGE
				BOOK	

17851

Indian Point
 x - 2,369,144.34
 y - 796,141.53



2,364,743.29
 790,069.34

WORK SHEET NO. 2
 NOT TO SCALE

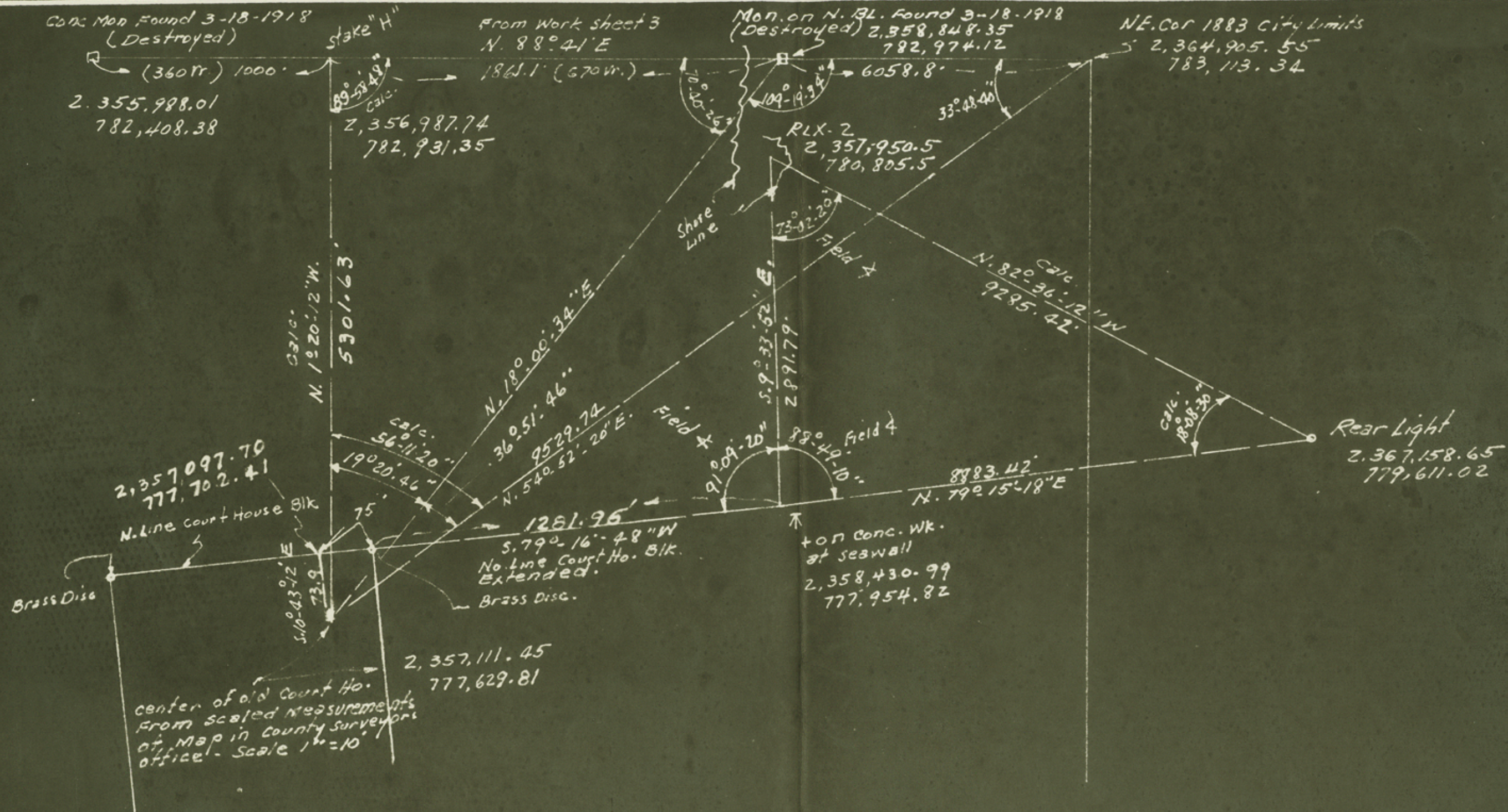
counter 47852

DRAWN	SURVEYED	DRWG NO
CHECKED	DATE	B
DATE	BOOK	PAGE
SCALE	JONES & VAN PELT, INC. SURVEYORS ENGINEERS TEXAS CORPUS CHRISTI	



WORK SHEET NO. 3
NOT TO SCALE

DRAWN	SURVEYED	DRWG. NO.
CHECKED	DATE	B
DATE	BOOK	PAGE
SCALE	JONES & VAN PELT, INC. SURVEYORS CORPUS CHRISTI, TEXAS ENGINEERS	

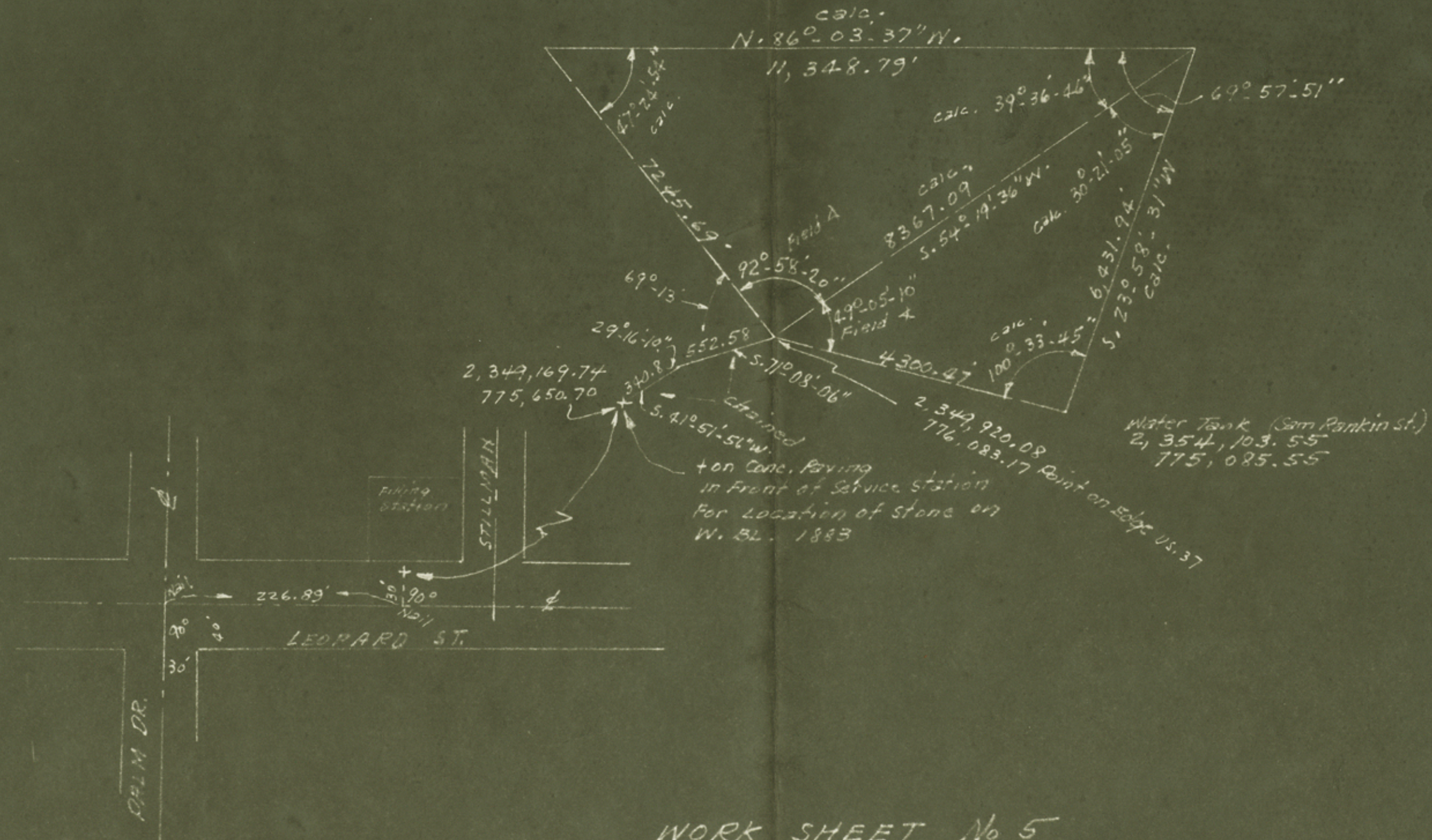


WORK SHEET No 4
NOT TO SCALE

DRAWN		DRWG NO.	
CHECKED		SURVEYED	
DATE		DATE	
SCALE		BOOK	
		PAGE	
		B	
JONES & VAN PELT, INC. SURVEYORS CORPUS CHRISTI, TEXAS ENGINEERS			

So. Aik. stack (Col. Southern)
 2,345,395.24
 781,742.23

port Tank
 2,356,717.13
 780,962.55



WORK SHEET No 5
 NOT TO SCALE

counter 47855

DRAWN		SURVEYED	DRWG NO
CHECKED		DATE	B
DATE		BOOK	
SCALE		PAGE	
JONES & VAN PELT, INC. SURVEYORS CORPUS CHRISTI, TEXAS ENGINEERS			

Stone of Leopard
 st on W. BL.
 (destroyed)
 2,349,169.74
 775,650.70

2,349,374.71
 766,866.49

5.1° 20' 12" E
 8786.6'

N. 1° 20' 12" W
 7099.1'

89° 58' 48"
 15,905.61

65° 57' 51"
 17,415.71

N. 88° 41' E
 15,905.61

N. 64° 37' 39" E
 17,415.71

15905.61
 N. 88° 41' E.

24° 03' 21"
 576,447.668

NE. COR.

2,365,276.12
 767,231.97

2,364,905.55
 783,113.34

WORK SHEET No G
 NOT TO SCALE

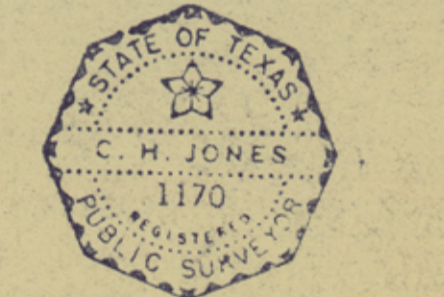
counter 47856

DRAWN		SURVEYED	DRWG NO
CHECKED		DATE	
DATE		BOOK	B
SCALE		PAGE	
JONES & VAN PELT, INC. SURVEYORS CORPUS CHRISTI, TEXAS ENGINEERS			

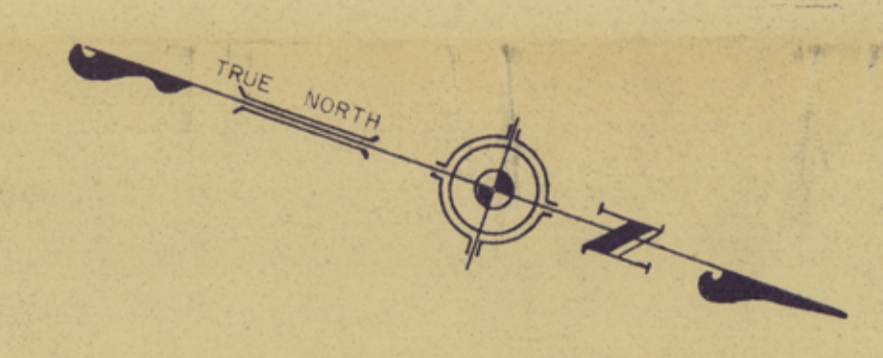


I, C.H. Jones, certify that this Plat has been prepared by me from my work on the ground and a Plat Dated 1883 and information from Old Field Books by C.F.H. von Blucher, all from the Office of William W. Green, County Surveyor, Nueces County, Texas, also the Local Commission Order Map of Corpus Christi Bay, showing Subdivision for Manned Development and the United States Gulf Coast Course Chart No. 523, and is True and Correct to the Best of My Knowledge, Dated 2/1/1962.

C.H. Jones
Registered Public Surveyor No. 1170



RECEIVED
MAR 8 1963
Landed Land Office



PLAT SHOWING THEORETICAL ORIGINAL CITY LIMITS OF CORPUS CHRISTI, TEXAS
BASED ON A PLAT DATED 1883 AND INFORMATION FROM OLD FIELD BOOKS BY C.F.H. VON BLUCHER, ALL FROM THE OFFICE OF WILLIAM W. GREEN, COUNTY SURVEYOR, NUECES COUNTY, TEXAS

NOTE: ALL BEARINGS AND COORDINATES SHOWN HEREON REFER TO THE LAMBERT GRID SYSTEM, TEXAS SOUTH ZONE

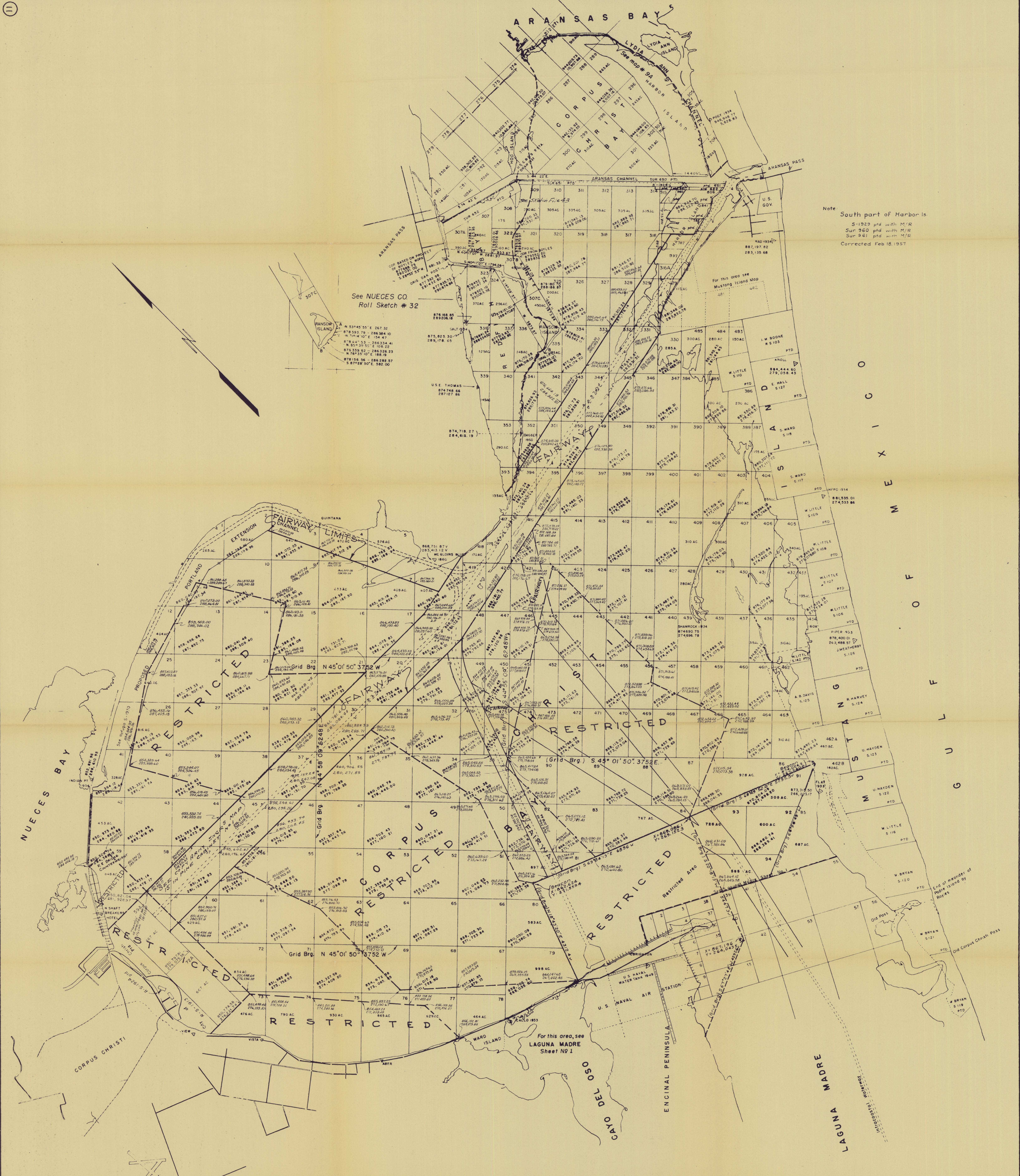
Scale 1"=1600'

SURVEYED AND MAPPED BY
JONES AND VAN PELT
CORPUS CHRISTI, TEXAS

Copies of this Plat are on file in the Office of the County Surveyor, Corpus Christi, Texas.

Nueces Co. Rolled Sk. No. 40

1003



Note
 South part of Harbor is
 S-1929 ptd with M/R
 Sur 960 ptd with M/R
 Sur 961 ptd with M/R
 Corrected Feb 18, 1957

See NUECES CO.
 Roll Sketch # 32

NOTE
 Coordinates in slant lettering added by Cities
 Service Petroleum Co. and are not official. Date 1962

Note: Tracts 307 through 485 are each 1/2 mile by one mile & contains 320 acres except where otherwise indicated.
 Tracts 1 through 78 are one mile by one mile & contain 640 acres except where otherwise indicated. In the latter instances the area is approximate.
 Boundary lines of all tracts, except where the contour or parallel to a line S 45° 36' W on a true course from U.S.C.G.S. 7 STA. DRAW 1921 located near the Aransas Port Aransas Causeway

SOUTH ZONE
 Draw 881,543 68
 291,897 19
 8-0°-37' 50"
 Revised Feb 20, 1951
 Revised Mar. 8, 1951
 Revised May 12, 1951
 Revised Oct 19, 1951
 Revised Jan. 2, 1952
 Revised Apr. 3, 1953
 Revised Apr 19, 1961

MAP OF
CORPUS CHRISTI BAY
 IN
 NUECES COUNTY
 SHOWING
 SUBDIVISION FOR MINERAL DEVELOPMENT
 BY
 BASCOM GILES-COMMISSIONER-GENERAL LAND OFFICE
 AUSTIN, TEXAS MAY 5, 1950

Scale - 1200 - Varas - To - One - Inch

J. M. LANDRUM
 SHEET NO. 1A
 Supersedes Sheet No. 1

Original in large cabinet upstairs.
 See Film No. 160