

Pecos Co. Rolled Sketch 54

- Letter
- Small Sketch Block ○

cont. 4309?

Alpine, Texas, May 15, 1913

2009

RECEIVED

MAY 15 1913

Referred to Map

Mr. J. H. Walker  
Acting Commissioner Gen. Land Office  
Austin, Texas

Dear Sir,

In reply to your favor of the 5th inst relative to corrected field notes of surveys in Blks A, B, C, D, & Q, I would say that I think I have discovered how the confusion has arisen and where the missing reports are.

I was doing this work for the Elsinore Cattle Co., whose manager, Mr. E. E. Townsend, wished all papers to pass through their lawyers hands before filing in the Gen. Land Office. I have a bunch of letters relating to these reports and field notes, which I started to send you but they were so bulky I decided to make a few quotations instead.

Letter from me to Townsend Feb. 9/13

"I have just ret'd from Austin where I went over the report on X, B, C, & D with Mr. von Rosenberg, Chf Drftsmn of the Gen. Land Office. He said our survey was correct and satisfactory, approved our method of distributing surplus &c. He says your sur 6 Q should be extended to a line north from the old corner we found"

Aug. 23 /14

Letter from me to Commissioner

"Your reply to my letter and report duly received..."

I have made arrangements with Mr. Townsend to complete the resurvey of Blocks A, B, C, & D, Pecos Co. I have your instructions...

The work was begun, a rept of progress returned and your instructions in the premisses received..."

Letter from me to Townsend

"I am mailing you today report on resurvey A, B, C, D & Q, Pecos Co. also enclose map showing corners marked distances &c.

I would keep the tracing and turn over one of the blue prints to the land Office if they will accept it..

I also enclose tracing from G.L.O giving original field notes &c. This your lawyer will need in order to follow the reasons for the resurvey.."

Letter from E. E. Townsed

4/12/15

"I have yours of the 8th and will thank you to send me field notes for Sec. Blk D ans sect. 6 c. 1545 Blk Q, and I will send them to Judge Rogan for filing in Land Office..."

Noted on letter "Fld nts sent Ap. 14"

R. S. D.

The above I think accounts for some of the missing reports and field notes held up in transit, when I supposed they had been duly filed in your Office and was replying to your inquiries at cross purposes supposing you had this information, and consequently did not understand your questions.

Taking up the details in your letter;

The error in the east line of Blk. D was in the measurement of the east line of survey 91 not sur. 90 as stated in my former letter.

So that all corners north of S. E. 91 stand as first set, and the field notes of sur 1 & 2 Blk Q are correct.

From S. E. 91 D to S. E. 96 D all corners were moved 141 varas north and new bearings taken and the old corners destroyed. The corners of 3, 4, and 6 Block Q were reset and new bearings made which are given in the enclosed corrected field notes for these surveys.

Sur 78 and 90 D will not be affected by the above change.

I do not remember how the field notes of the other surveys in your list were made, but I sent you corrected field notes for each and every survey in A, B, C, and D, so that you can compare the patents with these field notes.

No changes have been made or errors discovered except in the east line of D as above noted.

I dont wonder you were mixed on the Blk Q surveys, as you never received the plat and last field notes, so as you suggest I send corrected field notes for sur 3, 4, 5, & 6 Q as finally passed, and plat of same. field notes already returned for 1 & 2 are correct, this gives corrected field notes for the Block

I described in my last letter the means by which we located Blk Q, and the plat sent me with instructions for putting in these surveys so I need not repeat it here.

The east line of Q was the west line of 11<sup>1/2</sup> located by the T. 23. L. corner  
The west line of Q was the east line of D. sur 1, 2, & 3 were given their dis

counter 48100

tance north and south as called for in their field notes,

The south part of the Block depended on the original SA&MG corner, and survey 5 was put in course and distance by its field notes from IC, cutting down distance east and west to fit Blk D.

Sur 4 and 6 were put in to cover land left between 3 & 5, and between SA&MG & sur 1 and sur 5 Q.

As you suggest that a complete set of field notes of Q would be advisable I send them.

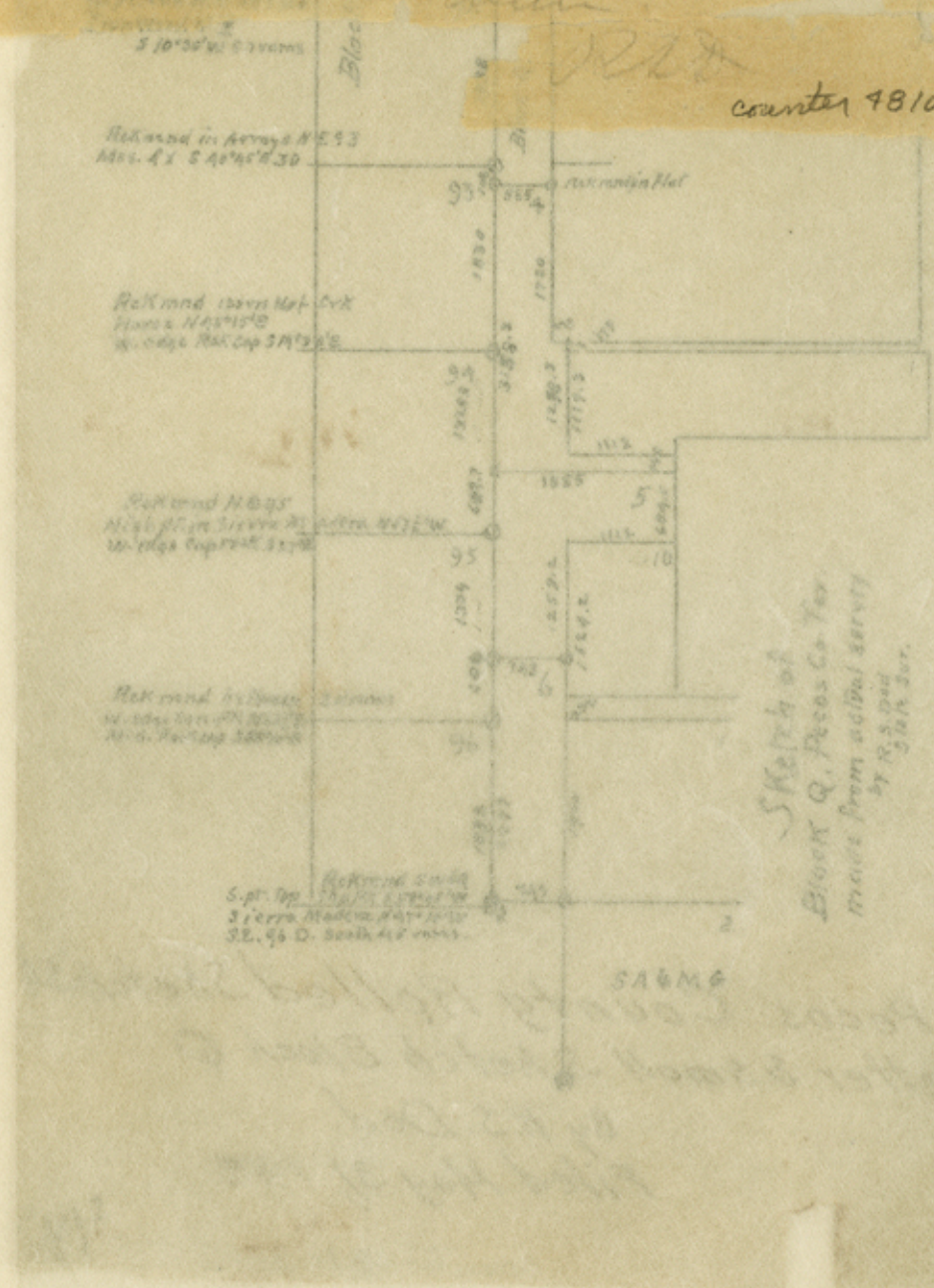
If there is anything further that requires clearing up please let me know.

Yours truly

*H. S. Dod*

*to Mr. Sur.*

*P. S. I am not certain as to what the notes are  
Blk Q - I have taken from the Co. Map of Morgan  
County please advise them*

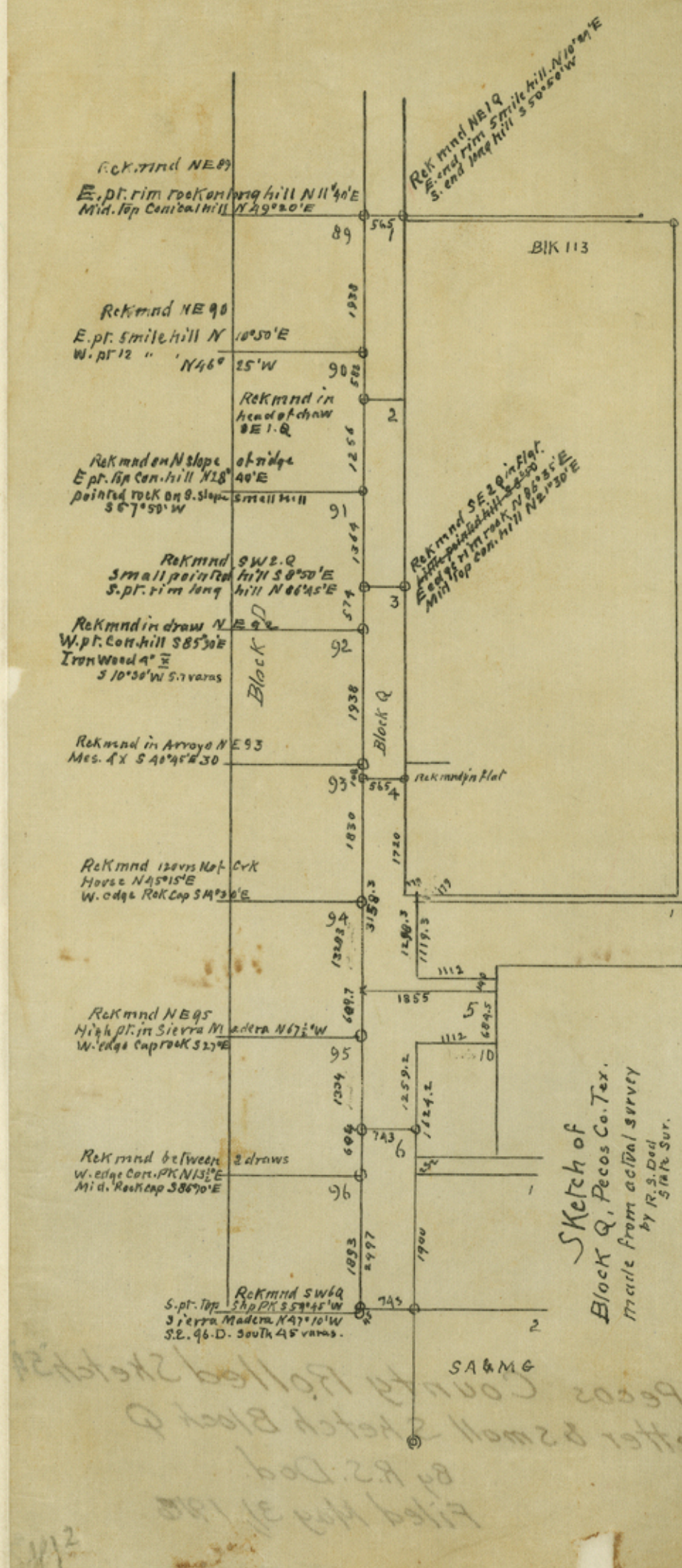


County 78101

*Sketch of  
Block Q, Pecos Co. Tex.  
made from actual survey  
by H. S. Dod  
24th Sur.*

*Block Q, Pecos Co. Tex. do hereby certify  
that the above sketch is true and  
correct.*

PECOS CO SUR 24



Examined together with corrected field notes and report accompanying, May 31-1916. *John W. Britton*  
 Filed and approved May 31-1916 *J. Robinson*  
 Commissioner

counter 48102

Sketch of Block Q, Pecos Co. Tex. Made from actual survey by R. S. Dod State Sur.

*R. S. Dod* State Sur  
 do hereby certify that the above sketch is true and correct.  
 signed May 31/16

Filed May 31/16  
 by R. S. Dod  
 Pecos County Potted Sketch Block Q  
 SA & MG

