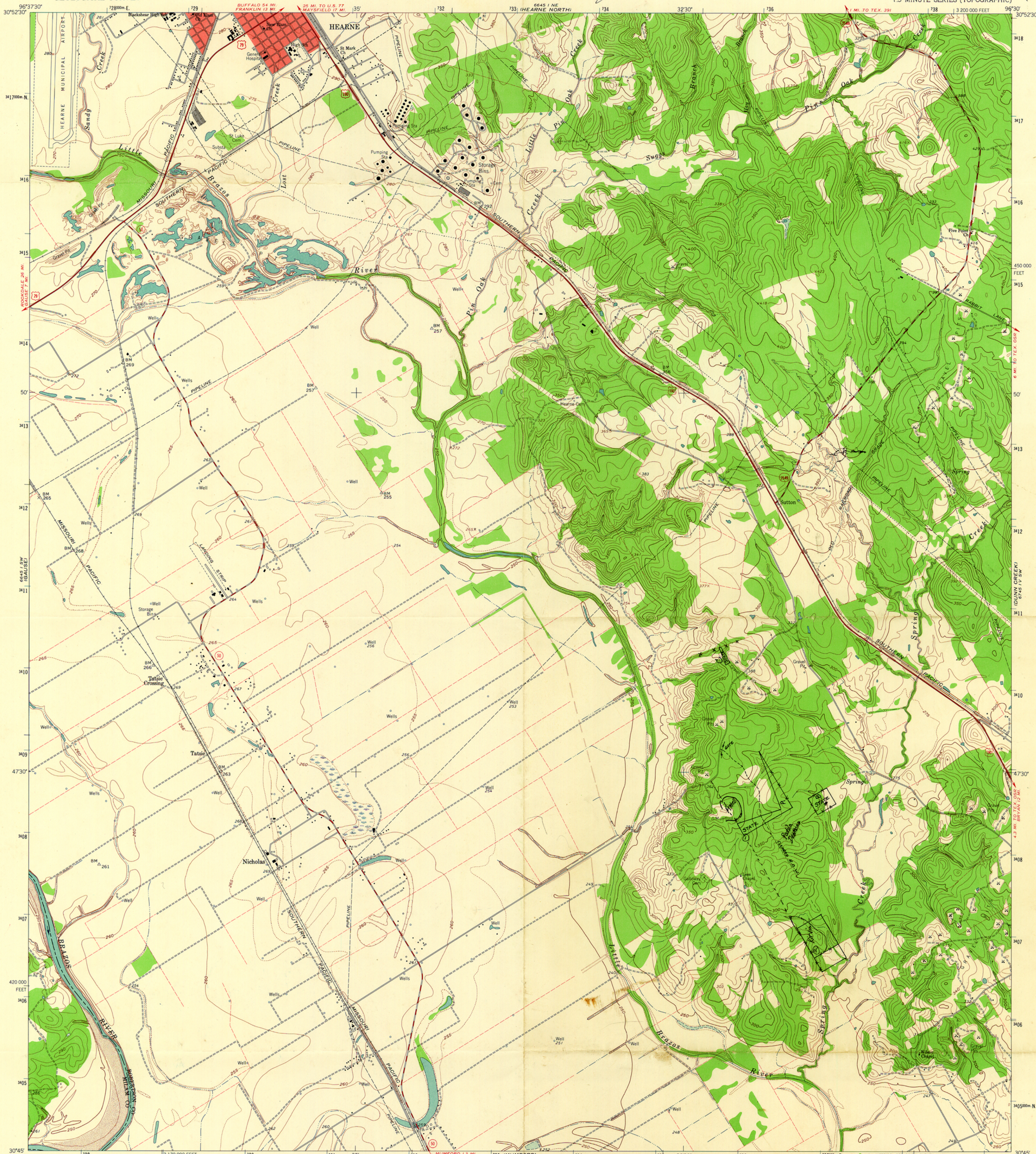
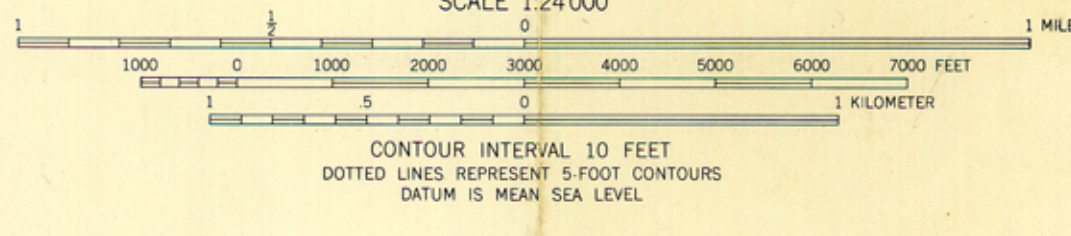
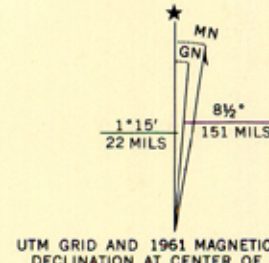


Robertson COUNTY BOUND SECTION NO. 2
Bill Thornton 29.36 Ac. Lightsey 17 Ac.
SURVEYED December 1974 BY S.J. Buchanan & Assoc.
FILED 1-27-75

counter 48961



Mapped, edited, and published by the Geological Survey
Control by USGS, USC&GS, and U.S. Bureau of Reclamation
Topography by photogrammetric methods from aerial
photographs taken 1958. Field checked 1961
Polyconic projection. 1927 North American datum
10,000-foot grid based on Texas coordinate system, central zone
1000-meter Universal Transverse Mercator grid ticks,
zone 14, shown in blue
Fine red dashed lines indicate selected fence lines
Red tint indicates areas in which only landmark buildings are shown



ROAD CLASSIFICATION

Heavy-duty	Light-duty
Medium-duty	Unimproved dirt
U.S. Route	State Route

QUADRANGLE LOCATION

THIS MAP COMPLIES WITH NATIONAL MAP ACCURACY STANDARDS
FOR SALE BY U.S. GEOLOGICAL SURVEY, DENVER 25, COLORADO OR WASHINGTON 25, D.C.
A FOLDER DESCRIBING TOPOGRAPHIC MAPS AND SYMBOLS IS AVAILABLE ON REQUEST

HEARNE SOUTH, TEX.
N3045-W9630/7.5
1961

3096-341

AMS 6645 1 SE-SERIES V882

Rowlett

counter 48862 25

Robertson Co. R14:SK:2

Bill Thornton
156.695 Ac. Tract

Mc KINNEY A-289 & WILLIAMS

146.718 ACRES — VOL. 290, PAGE 672
- 29.36 ACRES
= 117.358 ACRES
as defined by existing
fences & markers

29.36 ACRES

17.00 ACRES

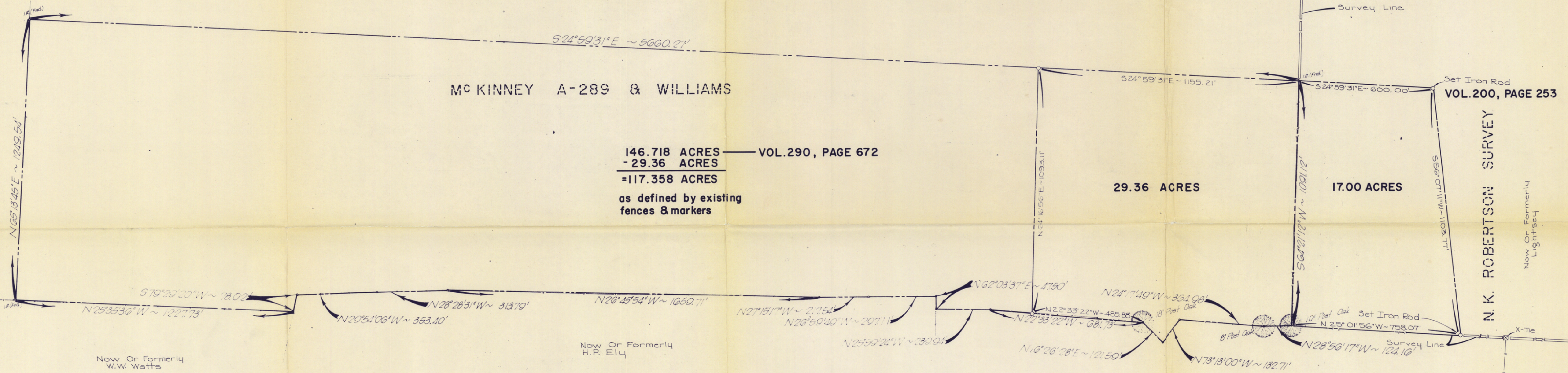
Set Iron Rod
VOL. 200, PAGE 253

N. K. ROBERTSON SURVEY

Now Or Formerly
Lightsey

Now Or Formerly
L. Check

State Of Texas
School Land
29.36 Acre Tract



Now Or Formerly
W.W. Watts

Now Or Formerly
H.P. Ely

Now Or Formerly
Alex Mc Gee
31.3 Acre Tr.

GEORGE A. NIXON II LEAGUE GRANT

RECEIVED
DEC 19 1974
General Land Office

**BILL THORNTON 29.36 ACRE TRACT
&
LIGHTSEY 17.00 ACRE TRACT**
Mc KINNEY & WILLIAMS SURVEY
&
N.K. ROBERTSON SURVEY
ROBERTSON COUNTY, TEXAS

PREPARED BY:
SPENCER J. BUCHANAN & ASSOCIATES, INC.
CONSULTING ENGINEERS BRYAN, TEXAS

DECEMBER, 1974
SCALE 1" = 200'



Surveyed By:
Donald W. Dockman
Donald W. Dockman
R.R.S. #1762
Dec., 1974