



BASCOM GILES  
COMMISSIONER  
GENERAL LAND OFFICE  
AUSTIN, TEXAS

STERLING COUNTY ROLLED SKETCH NO. "X" (FF)

Various letters, report and sketch in  
Sterling and Glasscock Cos.

Surveyed by W. J. Powell

Filed June 2, 1927

(To be kept in drawer with Sterling County  
Rolled Sketches)

*counter 49097*



W. J. Powell  
901 Praetorian Bldg  
Dallas Texas

STERLING

and  
Glasscock  
by Mr Brown  
& received here on  
6/2/27 B

Mr W. B. Brown

Sterling Santa Anna, Texas  
COUNTY ROLLED SKETCH NO. "X"

Various Letters, Report & Sketch in Sterling & Glasscock Cos

SURVEYED BY W. J. Powell

counter 49098

FILED June 2, 1927  
5/9/38 - J.W.



**BLOCK 32 IN TOWNSHIP 4 & 5  
GLASSCOCK & STERLING COUNTIES  
TEXAS.**

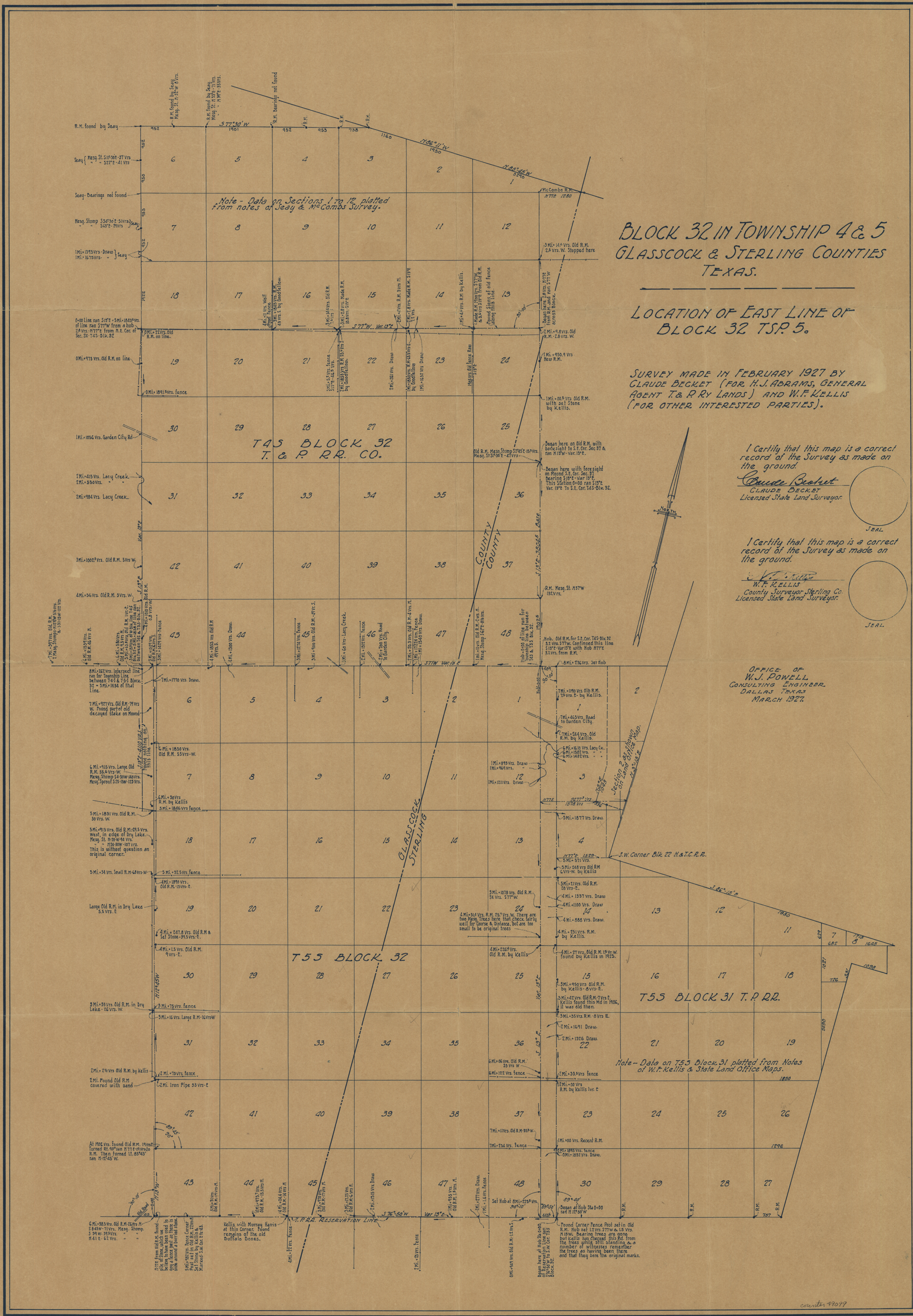
**LOCATION OF EAST LINE OF  
BLOCK 32 TSP. 5.**

**SURVEY MADE IN FEBRUARY 1927 BY  
CLAUDE BECKETT (FOR H.J. ABRAMS, GENERAL  
AGENT T. & P. RY LANDS) AND W.F. KELLIS  
(FOR OTHER INTERESTED PARTIES).**

I certify that this map is a correct  
record of the Survey as made on  
the ground.  
*Claude Beckett*  
CLAUDE BECKETT  
Licensed State Land Surveyor

I certify that this map is a correct  
record of the Survey as made on  
the ground.  
*W.F. Kellis*  
W.F. KELLIS  
County Surveyor Sterling Co.  
Licensed State Land Surveyor

OFFICE OF  
W.J. POWELL  
CONSULTING ENGINEER  
DALLAS TEXAS  
MARCH 1927



**T55 BLOCK 31 T.P.R.R.**

*Note - Data on T55 Block 31 platted from Notes  
of W.F. Kellis & State Land Office Maps.*



**BLOCK 32 IN TOWNSHIP 4 & 5  
GLASSCOCK & STERLING COUNTIES  
TEXAS.**

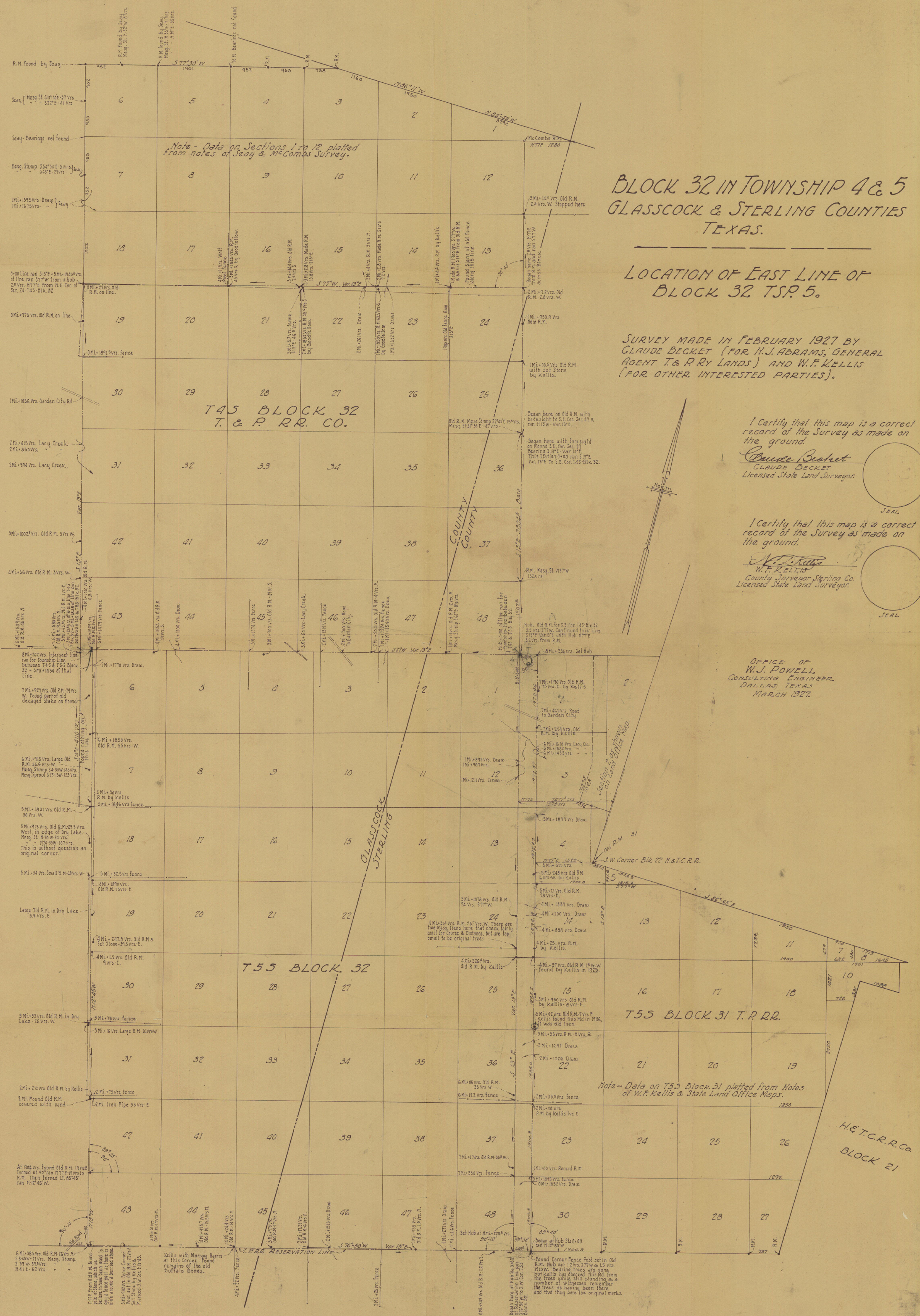
**LOCATION OF EAST LINE OF  
BLOCK 32 TSP. 5.**

**SURVEY MADE IN FEBRUARY 1927 BY  
CLAUDE BECKETT (FOR H.J. ABRAMS, GENERAL  
AGENT T. & P. RY LANDS) AND W.F. KELLIS  
(FOR OTHER INTERESTED PARTIES).**

I Certify that this map is a correct  
record of the Survey as made on  
the ground.  
*Claude Beckett*  
CLAUDE BECKETT  
Licensed State Land Surveyor

I Certify that this map is a correct  
record of the Survey as made on  
the ground.  
*W.F. Kellis*  
W.F. KELLIS  
County Surveyor, Sterling Co.  
Licensed State Land Surveyor

OFFICE OF  
W.J. POWELL  
CONSULTING ENGINEER  
DALLAS, TEXAS  
MARCH 1927.





Block 32 in Township 4 S  
Glasscock & Sterling Counties  
Texas

Location of East line of  
Block 32 T19 S

Survey made in February 1927 by  
C. H. Powell for A. H. Powell & Son  
of Stirling Co. Texas. The survey  
shows the true meridian bearing.

Found that the true meridian  
bearing of the survey is true to  
the ground.

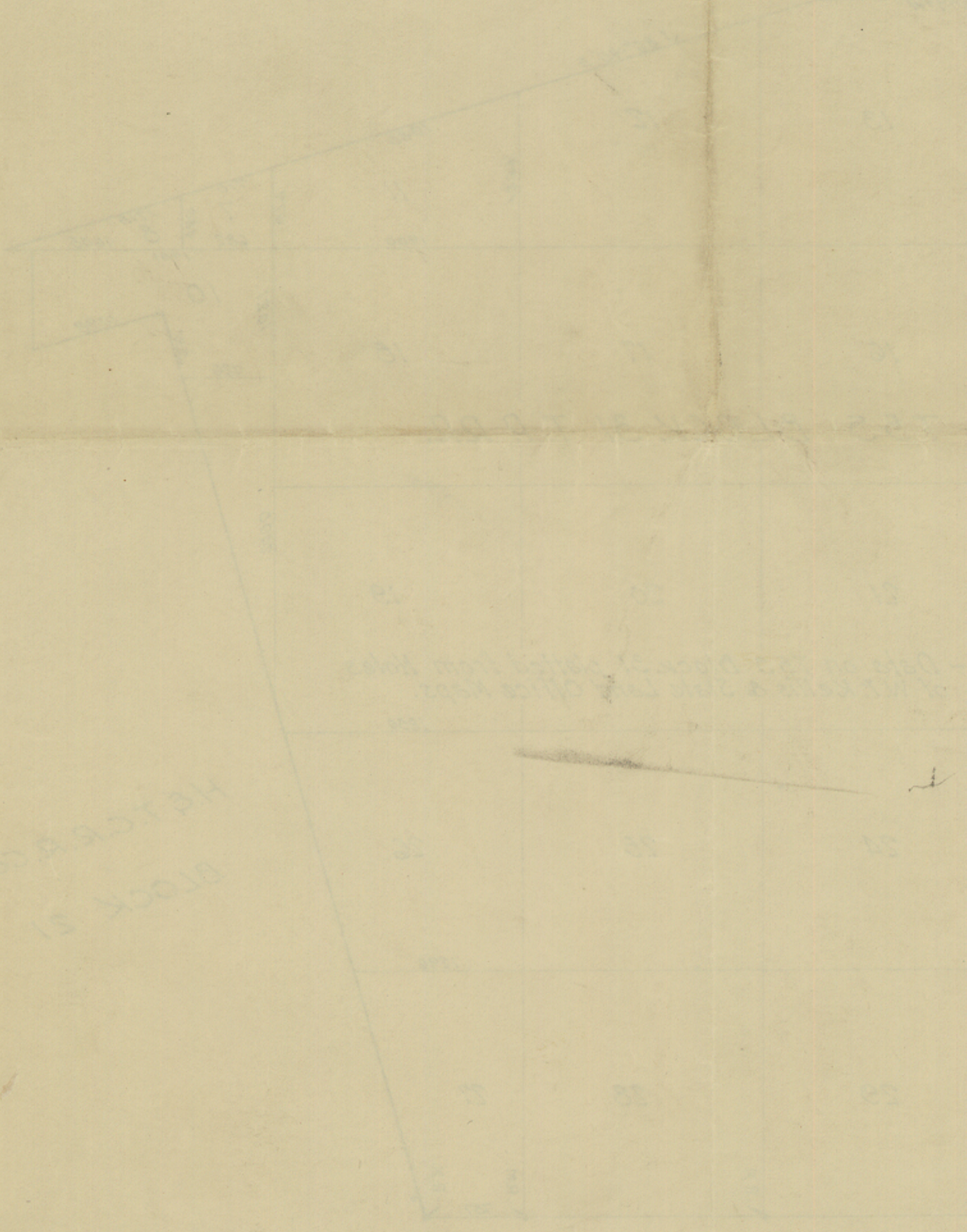


LEFT BY M. J. POWELL  
Sept 11-1950.  
RETURN IF REQUESTED  
W.S.

Over Glasscock Co  
Rd. SKETCH #1  
By Paul H. COMBE.

Stirling Co. Rhd. Sk. X

corner 79101





W. J. POWELL  
MEM. AM. SOC. C. E.  
CONSULTING CIVIL ENGINEER  
DALLAS

901 PRAETORIAN BUILDING

March 30, 1927.

Mr. W. B. Brown,  
Santa Anna, Texas.

Dear Sir:

I am forwarding to you a complete copy of the report on the joint survey made by Mr. Kellis and Mr. Becket of the east line of Block 32, Tsp. 5 S. together with a copy of my letter to the Commissioner of the General Land Office, submitting the matter to him for his opinion. As soon as I have his reply, will advise you further.

Yours very truly,

*W. J. Powell*

*counter 49102*

*RS*



March 30, 1927.

Hon. J. T. Robison, Commissioner,  
General Land Office,  
Austin, Texas.

Dear Sir:

We have recently made a survey in the effort to determine the east line of Block 32, Twp. 5 S., T & P Ry. Co., Glasscock and Sterling Counties, and I am forwarding to you a complete copy of the report on this survey, which was made jointly by Mr. W. P. Hollis, County Surveyor of Sterling County, representing Mr. W. B. Brown, Mr. J. L. Glass and other interested property owners, and Mr. Claude Becket, Licensed Land Surveyor, representing this office.

This line along the south half of Block 32 is well established and marked and recognized by all parties concerned as the correct line and is constructed from the southeast corner of Block 32 on the south line of the T. & P. Reservation, which south line along this and adjacent blocks is well marked and established. The east line of Block 32 along the north half of said block, however, is in controversy and great confusion exists as to the proper location of this line. Many surveys have been made and there is a plentiful supply of mounds scattered along this line, none of which is supposed to be reliable enough to determine the line definitely.

The southeast corner of Block 32, Twp. 4 S., is unquestionably west some 489 yards of the southeast corner of Block 32, Twp. 5 S., and a jog must be made somewhere, and the question at issue is whether or not this jog shall be made in the middle of Block 32, Twp. 5 S. or at the northeast corner of said block. Mr. Hollis and Mr. Becket, after making the survey, recommend that the entire east line of Block 32, Twp. 5 S., be constructed from the southeast corner of said block and run in a straight line to the northeast corner of said block, making the jog in the block line at that corner, since by so doing all the sections affected will be left with their full complement of land and no ownership interest will be disturbed; whereas, if the jog is made in the middle of the block the eastern tier of sections through the north half of the block will be left short or else all sections in the north half of the block will have to be moved west, which will disturb

counter 49103

X 42 1/2 05 201702

RS'



2.

the west line of the block and transfer the confusion from the east to the west side of the block.

We believe that the correct solution of the matter is to construct the east line of Block 32, Twp. 5 S. from the southeast corner of said block, as recommended by the surveyors, producing the line as now located along the south half of the block north to the township line; and it is our understanding that all parties concerned are willing to abide by this construction, provided it meets with your approval.

Your consideration of this matter and advise as to your opinion and decision as soon as possible will be appreciated, since the interested parties are anxious to have the question settled for all time.

Very truly yours,

Engineer.

Counter 49104

Spring 1882

RS<sup>2</sup>



BLK. 32 - TSP. 5 S.

GLASSCOCK COUNTY - SHERLING COUNTY

Report of a joint survey made for the purpose of trying to locate the block line between Blocks 31 and 32, Tsp. 5 S., Texas & Pacific R. R. Co. Surveys.

Survey made February 14th to 25th, 1927, inclusive.

Chairmen - James Alsop and John Petty.

Present and assisting were W. L. Foster, J. L. Glass and C. C. Reynolds.

We began at the N. E. corner of Section 36 and the S. E. corner of Section 25, Tsp. 4 S., Blk. 32 and the N. W. corner Section 14 and the S. W. corner of 13, Tsp. 4 S., Blk. 31, T. & P. R. R. Co. Surveys, a rock mound from which a mesquite stump bears South  $1^{\circ} 30'$  East 47 varas. (This tree standing in 1906 when Paul McCoombs and T. H. Seay made a joint survey of this Block for W. H. Abrams, who say that it bears the old marks).

A mesquite stump, marked trunk gone, bears South  $2^{\circ} 45'$  East 15 varas. We have no doubt but that these are the stumps of the original bearing trees.

We took a fore sight on a flag set on a rock mound, the S. E. corner, Section 37 and the N. E. corner, Section 48, Tsp. 4 S. Blk. 32, T. P. R. R. and the N. W. corner Section 19 and the S. W. corner Section 18, Tsp. 4 S. Blk. 31, T. P. R. R. and found bearing to bear South  $13^{\circ}$  East with a variation of  $13^{\circ}$  East. Using this line as a base, we proceeded with the survey by using fore and back sights and turning angles and not depending on the needle, as Seay and McCoombs had reported that there was considerable local magnetic attraction and as Mr. Kellis knew from experience as he has been surveying in these parts for many years.

Thence South  $13^{\circ}$  East at 3804.5 varas, rock mound, from which a mesquite stump bears North  $37^{\circ}$  West 132 varas. (This tree standing in 1906 when Seay and McCoombs made survey and they say that it bore marks but were so dim as to be illegible.

At 5709.7 varas set hub large rock mound 3.2 varas South  $77^{\circ}$  West, which we took to be the S. E. corner of Section 48, Tsp. 4 S., Blk. 32, T. & P. R. R. and the S. W. corner of Section 19, Tsp. 4 S., Blk. 31, T. P. R. R.

From this hub as 0 plus 00 we continued South  $13^{\circ}$  East.

X 22 619 03 2/11/27

counter 49105

RS<sup>3</sup>



At 1 mile plus 893 varas cross drain. At 1 mile plus 969 varas cross drain. At 1 mile plus 1211 varas cross drain.

At 2 miles set a hub on line and turned angle  $90^{\circ}$  left and ran North  $77^{\circ}$  East 1578 varas and looked for old S. E. corner of Section 3, Twp. 5 S., Blk. 31, as originally located by Murray Harris and W. C. Powell, which was supposed to be the S. W. corner of Blk. 22, H. & T. C. Ry. Co.

We looked very carefully over a large area here but found nothing. Then continued N.  $77^{\circ}$  E. in all 2477 varas to a fence which is about on the west line of said Blk. 22, H. & T. C. Ry. Co.

We then returned to the hub set at 2 miles plus 00 and continued South  $13^{\circ}$  East. At 3 miles plus 231 varas crossed a fence running right angles to our line cornering South  $77^{\circ}$  West 23 varas.

At 3 miles plus 1078 varas rock mound under fence 24 varas South  $77^{\circ}$  West.

At 4 miles plus 31.4 varas rock mound South  $77^{\circ}$  West 25.7 varas. From this mound there are two mesquite trees which check fairly well for bearing and distance, but are now much too small for the original trees which were 12" when marked by original surveyors. Mr. Kellis had cut into one of these trees and found what appears to be an old hack, but the tree was only 3" or 4" in diameter when hack was made.

At 4 miles plus 226.4 varas rock mound made by W. F. Kellis South  $77^{\circ}$  West 25 varas.

At 6 miles plus 06 varas rock mound 35 varas South  $77^{\circ}$  West.

At 6 miles plus 122 varas cross fence.

At 7 miles plus 11 varas rock mound South  $77^{\circ}$  West 35.5 varas..

At 7 miles plus 234 varas cross fence.

At 8 miles plus 222 varas set hub 1-1/2 varas North  $13^{\circ}$  West from fence.

Turned angle  $89^{\circ} 50'$  left and ran North  $76^{\circ} 50'$  East 445.6 varas and set hub which is 1.2 varas South  $77^{\circ}$  West and 1.5 varas North  $13^{\circ}$  West from corner post of fence set in

counter 49104

X 47 NLR 03  
201102

RS4



old original mound for the S. E. corner of Section 48, Tsp. 5 S., Blk. 32 and the S. W. corner of Section 30, Tsp. 5 S., Blk. 31, T. & P. R. R. on the south reservation line. The bearing trees for this corner are gone but Mr. Kellis has checked the location of this corner from them while they were still standing and bore the marks plainly. Mr. W. L. Foster remembers seeing the trees as does also Mr. W. T. Conger who formerly owned Section 48.

There is no doubt but that this is the original location of the S. E. corner of Section 48, Tsp. 5 S, Blk. 32. There is no controversy over its location nor has there ever been. Running North  $77^{\circ}$  East along the old reservation line, Mr. Kellis has found most all the old original corners to where it intersects the west line of H. & T. C. Ry. Co. Blk. 21, and all construction in the south part of Blk. 31, Tsp. 5 S has been made off of this line and these corners.

We then turned  $89^{\circ} 40'$  left at last hub set and ran North  $12^{\circ} 50'$  West, with said hub as 0 plus 00.

At 0 miles plus 1895 varas fence.

At 1 mile plus 00 varas rock mound apparently recently made.

At 2 miles plus 00 varas rock mound made by Kellis, 1 vara North  $77^{\circ}$  West.

At 2 miles plus 1326 varas draw.

At 2 miles plus 1691 varas draw.

At 2 miles plus 1719 varas draw.

At 3 miles plus 27 varas rock mound 35 varas North  $77^{\circ}$  East.

At 3 miles plus 36 varas rock mound 7 varas North  $77^{\circ}$  East. Mr. Kellis says he found this mound in 1906.

At 3 miles plus 950 varas rock mound by Kellis 8 varas North  $77^{\circ}$  East.

At 4 miles plus 27 varas rock mound 1-1/2 varas South  $77^{\circ}$  West, found by Kellis in 1925. Could find no bearing trees or their stumps.

At 4 miles plus 251 varas rock mound by Kellis.

At 4 miles plus 888 varas draw.

At 4 miles plus 1100 varas draw.

At 4 miles plus 1337 varas draw.

At 5 miles plus 21 varas cross fence, old rock mound North  $77^{\circ}$  East 28 varas.

counter 99107

RS 5



At 5 miles plus 248 varas rock mound by Kellis 6 varas South  $77^{\circ}$  West.

At 5 miles plus 571 varas set hub and ran North  $77^{\circ}$  East 1529 varas to the S. W. corner of Blk. 22, H. & T. C. Ry. Co. As now located, a large rock mound.

Then went back to hub set at 5 miles plus 571 varas and continued North  $12^{\circ} 50'$  West.

At 5 miles plus 1377 varas cross draw.

At 6 miles plus 1482 varas cross draw.

At 6 miles plus 1582 varas cross draw.

At 6 miles plus 1618 varas cross draw.

At 7 miles plus 244 varas rock mound by Kellis.

At 7 miles plus 465 varas center<sup>line</sup> of Garden City Road.

At 7 miles plus 1190 varas Kellis mound 7-1/2 varas North  $77^{\circ}$  East.

At 8 miles plus 236 varas set hub and found Kellis mound 1-1/2 varas North  $77^{\circ}$  East.

From hub turned  $90^{\circ}$  left and ran South  $77^{\circ}$  West 489 varas to hub set 3.2 varas North  $77^{\circ}$  East from the S. E. corner of Section 48, Tsp. 4 S, Blk. 32.

From this hub turned angle  $90^{\circ}$  left off of a flag set on the line run South  $13^{\circ}$  East from the S. E. corner of Section 25 and the N. E. corner of Section 36, Tsp. 4 S, Blk. 32, T. & P. R. R. and ran South  $77^{\circ}$  West along the South Township Line of Tsp. 4 S, Blk. 32.

At 1 mile plus 11 varas old rock mound 2 varas North  $13^{\circ}$  East from which a mesquite stump bears South  $61^{\circ}$  East 8-1/3 varas.

At 1 mile plus 1540 varas cross draw.

At 1 mile plus 1722.4 varas cross fence.

At 2 miles plus 20.3 varas old rock mound 4 varas North  $13^{\circ}$  West.

At 2 miles plus 700 varas center<sup>line</sup> of Garden City Road.

At 2 miles plus 1312 varas cross fence.

At 3 miles plus 60 varas Lacy Creek.

counter 49108

X 20 1/2 2 2/3 2

RS 6



At 3 miles plus 900 varas found old rock mound 49 varas South  $13^{\circ}$  East.

At 3 miles plus 1274 varas cross fence.

At 4 miles plus 1300 varas cross draw.

At 4 miles plus 1853 varas found old rock mound 49 varas South  $13^{\circ}$  East.

At 5 miles plus 1429 varas cross fence.

At 5 miles plus 1529 varas large old rock mound North  $13^{\circ}$  West 16 varas (in cove).

At 6 miles plus 580 varas old rock mound  $9-1/2$  varas North  $13^{\circ}$  West.

At 6 miles plus 1539 varas old rock mound 46 varas North  $13^{\circ}$  West.

At 7 miles plus 597 varas found old rock mound from which stump of mesquite bears North  $12-1/2^{\circ}$  West  $5-1/2$  varas. Another mesquite stump bears South  $31-1/4^{\circ}$  West 112 varas. This is evidently the quarter section corner on the north line of Section 2, Twp. 5 S., Blk. 33 and the quarter section corner on the south line of Section 47, Twp. 4 S., Blk. 33, according to the calls.

We then began at the hub which we set 1.2 varas South  $77^{\circ}$  West and 1.5 varas North  $13^{\circ}$  West from the S. E. corner of Twp. 5 S., Blk. 32. Took fore sight on hub set at 8 miles plus 222 varas on the line. ran South  $13^{\circ}$  East from a point 3.2 varas North  $77^{\circ}$  East from the S. E. corner of Twp. 4 S., Blk. 32, and ran South  $76^{\circ} 50'$  West. At 0 miles plus 382 varas crossed Sterling Creek; at 0 miles plus 445.6 varas hub used as fore sight as described above.

At 0 miles plus 949 varas old rock mound 1.2 varas South  $13^{\circ}$  East.

At 1 mile plus 01.6 varas cross fence at right angles.

At 1 mile plus 955 varas rock mound 1.5 varas North  $13^{\circ}$  West.

At 2 miles plus 25 varas fence runs South  $13^{\circ}$  East.

At 2 miles plus 1315 varas cross draw.

At 2 miles plus 1810 varas cross draw.

counter 49109

X 42 218 00 private

Rs<sup>7</sup>



At 3 miles plus 17.5 varas fence corner post set in old rock mound 6 varas North  $13^{\circ}$  West.

At 3 miles plus 970 varas old rock mound 12 varas North  $13^{\circ}$  West.

At 4 miles plus 22 varas cross fence at right angles.

At 4 miles plus 24.4 varas old rock mound 22 varas North  $13^{\circ}$  West. This is the corner that calls for a Buffalo bone mound. Murray Harris showed this corner to Mr. Kellis in 1907 and they were able at that time to find particles of the buffalo bones. Murray Harris took some of them with him.

At 4 miles plus 975 varas rock mound 15.5 varas North  $13^{\circ}$  West.

At 5 miles plus 31 varas rock mound 19 varas North  $13^{\circ}$  West. Fence runs North  $13^{\circ}$  West and South  $77^{\circ}$  West.

At 5 miles plus 982 varas a stone set by Kellis North  $13^{\circ}$  West 22 varas marked S. W. corner South half Section 43.

At 6 miles plus  $38\frac{1}{2}$  varas set hub old rock mound 26 varas North  $13^{\circ}$  West, from which a mesquite stump bears South  $8\frac{3}{4}^{\circ}$  West 71 varas; another bears North  $41^{\circ}$  East 62 varas and another South  $39^{\circ}$  West  $39\frac{1}{2}$  varas. (Notes call for mesquite 7" South  $39^{\circ}$  West  $29\frac{2}{3}$  varas. We found old road South  $77^{\circ}$  East 415 varas. There is another rock mound North  $77^{\circ}$  East 28 varas, but we feel certain that this mound has been built for a fence post guy as there is a stone buried under the mound that has a barbed wire cable around it as is used for guying fence posts in this country.

From hub set at 6 miles plus  $38\frac{1}{2}$  varas turned angle right  $90^{\circ} 10'$  and ran North  $13^{\circ}$  West, at 26 varas above mentioned mound which we believe to be the original S. W. corner of Twp. 5 S, Blk. 32. (This mound is 0 plus 00 of our chaining on this line.)

At 1 miles plus 02 varas found rock mound 19 varas North  $77^{\circ}$  East.

We turned angle right  $90^{\circ}$  and ran North  $77^{\circ}$  East 19 varas to said mound.

Then turned angle left  $89^{\circ} 45'$  and ran North  $12^{\circ} 45'$  West, calling this mound 1 miles plus 02 varas of our chaining.

counter 49110

X 22 618 02 201702

RSY



At 2 miles plus 90 varas found old rock mound almost buried in the earth.

At 2 miles plus 2-1/2 varas rock mound.

At 2 miles plus 2-1/2 varas iron pipe 33 varas North 77° East.

At 2 miles plus 58 varas cross fence running North 77° East and corner is S. 77° West 17 varas.

At 3 miles plus 16 varas large rock mound 41 varas South 77° West.

At 3 miles plus 33 varas rock mound 6 varas South 77° West in dry lake.

At 3 miles plus 75 varas cross fence running North 77° East. Corner about 25 varas South 77° West.

At 4 miles plus 1-1/2 varas small rock mound 9 varas North 77° East.

At 4 miles plus 247.8 varas old rock mound and set stone 39-1/2 varas North 77° East.

At 4 miles plus 916 varas large old rock mound in west edge of dry lake 5-1/2 varas South 77° West.

At 4 miles plus 1890 varas rock mound 15 varas North 77° East.

At 5 miles plus 32-1/2 varas cross fence running North 77° East. Fence corner South 77° West 61 varas.

At 5 miles plus 34 varas small rock mound South 77° West 68 varas.

At 5 miles plus 913 varas found old rock mound 29-1/2 varas South 77° West in edge of dry lake.

A mesquite stump bears North 20° West 94 varas.

A mesquite stump bears North 24-1/2° West 107 varas. (This is undoubtedly the original quarter section corner on the west line of Section 18, Tsp. 5 S, Blk. 32.)

At 5 miles plus 1831 varas rock mound 30 varas South 77° West.

At 5 miles plus 1846-1/2 varas fence corner 23 varas North 77° East. Fence runs North 77° East and North 13° West and another about west.

x 22 N 20 E 107

counter 99111

R59



At 6 miles plus 30 varas rock mound made by Kellis 55 varas South  $77^{\circ}$  West.

At 6 miles plus 915 varas large old rock mound 53.6 varas South  $77^{\circ}$  West from which a mesquite stump bears South  $4-1/2^{\circ}$  West 140 varas and South  $25-1/2^{\circ}$  West 123 varas, - mesquite sprout but no sign of the stump.

At 6 miles plus 1850 varas a rock mound 55 varas South  $77^{\circ}$  West. This mound is not very plain but checks very well with the mounds found.

At 7 miles plus 1720 varas cross draw.

At 7 miles plus 927 varas large old rock mound 79 varas South  $77^{\circ}$  West. We found part of old decayed stake on this mound.

At 7 miles plus 1700 varas draw.

At 8 miles plus 262 varas intersected line run between Tps. 4 S and 5 S, Blk. 32 at 5 miles plus 1434 varas of that line.

----- 00000 -----

The following survey made by Claude Becket, W. F. Kellis not assisting as it was made to determine the boundary line between Sections 13 and 24, 14 and 23 and 15 and 22, Tsp. 4 S, Blk. 32, but is incorporated in this report on account of its connection with our survey of Tsp. 5 S, Blk. 32.

I began at the S. E. corner of Section 25 and the N. E. corner of Section 36, Tsp. 4 S, Blk. 32, on the East Block line of Blk. 32; corner as previously described in this report.

Took back sight to rock mound at S. E. corner Section 37 and the N. E. corner Section 48, as previously described in this report.

Then ran North  $13^{\circ}$  West along fence variation  $13^{\circ}$  East.

At 1 mile plus 0.5 varas rock mound under fence with set stone by Kellis.

At 1 mile plus 950.9 varas new rock mound and stake under fence.

At 1 mile plus 1710 varas fence running South  $77^{\circ}$  West.

X 42 BLK 32  
2011/12

counter 49112

Rs<sup>10</sup>



At 2 miles plus 9.8 varas set hub on line, old rock mound South  $77^{\circ}$  West 2.8 varas. Continued North  $13^{\circ}$  West and at 2 miles plus 261 varas cross draw.

At 3 miles plus 14.4 varas found old rock mound 2.5 varas South  $77^{\circ}$  West.

I then returned to the hub set on line at 2 miles plus 9.8 varas, and with fore sight on flag set on hill about 700 varas North  $13^{\circ}$  East, turned angle  $90^{\circ}$  left and ran South  $77^{\circ}$  West along old abandoned fence line which is easily discernible by the rock that had been piled around the fence posts.

At 1 mile plus 2.8 varas rock mound by Kellis.

At 1 mile plus 1632 varas a draw.

At 1 mile plus 1850 varas rock mound 55.2 varas South  $13^{\circ}$  East set by Goodfellow; fence 100 varas South  $13^{\circ}$  East.

At 2 miles plus 94 varas rock mound 3 varas North  $13^{\circ}$  West.

At 2 miles plus 261 varas draw.

At 2 miles plus 1853 varas rock mound 55.2 varas South  $13^{\circ}$  East, by Goodfellow.

At 3 miles plus 5.2 varas fence runs South  $13^{\circ}$  East.

At 3 miles plus 14.4 varas rock mound 7.6 varas North  $13^{\circ}$  West.

At 3 miles plus 1845 varas Goodfellow rock mound 43 varas South  $13^{\circ}$  West fence South  $13^{\circ}$  West 46-1/2 varas.

At 4 miles plus 11 varas cross wolf proof fence.

At 5 miles plus 1046 varas cross fence.

At 5 miles plus 1843.6 varas found old rock mound South  $13^{\circ}$  East 22 varas.

Turned  $90^{\circ}$  angle left and ran South  $13^{\circ}$  East.

At 22 varas old rock mound.

At 973 varas old rock mound on line.

At 0 mile plus 1891.5 varas cross fence.

At 1 mile plus 1056 varas cross center line of Garden City Road.

At 2 miles plus 415 varas cross Lacy Creek.

X \* BLA 00 211702

counter 49113

Rs "



At 2 miles plus 550 varas cross Lacy Creek.

At 2 miles plus 984 varas cross Lacy Creek.

At 3 miles plus 1002.8 varas old rock mound 5 varas South  
77° West.

At 4 miles plus 56 varas old rock mound 3 varas South  
77° West.

At 4 miles plus 1010 varas old rock mound 0.8 varas South  
77° West.

At 5 miles plus 13.3 varas intersected line ran between  
Tsp. 4 and 5 South, Block 32, at 5 miles plus 1858 varas of that  
line, continuing South 13° East, at 5 miles plus 63.8 varas. Old  
rock mound on line.

With Mr. Kellis we ran this line South 13° East 2 miles and  
300 varas farther and looked for corner but could find nothing.

----- 000000 -----

On our map which accompanies this report we show work done  
in the north part of Tsp. 4 S., Blk. 32 by Paul McCoombs, State  
Surveyor, and T. H. Seay, County Surveyor of Howard County at that  
time. This work was done for W. H. Abrams in March, 1906 and was  
quite an extensive survey, but we are only showing their work in the  
north part of said Tsp. 4 S., Blk. 32. Our work agrees very closely  
with theirs where we have worked over the same ground. We are also  
showing on our map the construction of Tsp. 5 S., Blk. 31 by data  
obtained from recent land office maps and notes of Mr. Kellis.

The lower sections of the block have been constructed off  
of the Reservation Line which gives them their full acreage as  
originally surveyed; while sections 1 and 2 in the north part of  
the block have been constructed from the S. E. corner of Tsp. 4 S.,  
Blk. 32, greatly increasing the area of Section 2, Blk. 31, which  
originally called for 216 acres and as now located has over 700  
acres.

The original field notes for Section 3, Blk. 31, call  
for the South line to be 1578 varas North 77° East to the S. W.  
corner of Block 22, H. & T. C. Ry. Co. Surveys. At two miles  
South 13° East from the S. E. corner of Tsp. 4 S., Blk. 32 we find  
it to be 2477 varas to the west line of said Block 22, and the  
actual location of the S. W. corner of said Block 22 to be 5 miles

counter 99114

X 42 619 .02 011702

Rs<sup>12</sup>



plus 571 varas North  $12^{\circ} 50'$  West and 1529 varas North  $13^{\circ}$  East from the S. E. corner of Tsp. 5 S, Blk. 32, T. & P. R. R., and 2 miles plus 1592 varas South  $13^{\circ}$  East and 1 mile plus 104.8 varas North  $77^{\circ}$  East from the S. E. corner of Tsp. 4 S, Blk. 32, T. & P. R. R.

It seems that Murray Harris and W. C. Powell, the original surveyors, were mistaken in the true location of said Blk. 22, H. & T. C. R. R., believing it to join Block 23, H. & T. C. R. R. on the north boundary line, but subsequent developments have shown that there is a strip 1200 varas wide lying between these two blocks which moved Block 22 1200 varas South (in reality South  $3-1/4^{\circ}$  West) with reference to the east line of Blk. 32, Tsp. 4 S, T. & P. R. R., which requires a variation of  $13^{\circ}$  East, while the west line of Block 22, H. & T. C. R. R. takes a variation of  $9-3/4^{\circ}$  East, making an angle between these lines of  $16-1/4^{\circ}$ . This, then, would place the Harris and Powell location 1186.5 varas North  $13^{\circ}$  West and 336 varas North  $77^{\circ}$  East of its true location, or 5 miles plus 1775 varas North  $12^{\circ} 50'$  West and 1965 varas North  $13^{\circ}$  East from the S. W. corner of Tsp. 5 S, Blk. 32.

We are thoroughly convinced after having made this survey that in the original survey a jog was made either on the East Block Line of Tsp. 5 S, Blk. 32 or on the East Block Line at Tsp. 4 and 5 S, Blk. 32.

We have looked very carefully over the ground for positive evidence of where the error was made but were unable to find it. We were unable to identify positively a single corner between the S. E. corner of Tsp. 5 S and the S. E. corner of Tsp. 4 S, Blk. 32. We find that the East Block Line of Tsp. 4 S, Blk. 32 produced S.  $13^{\circ}$  E. intersects the south line of Tsp. 5 S, Blk. 32, 446.8 varas South  $77^{\circ}$  West of the S. E. corner of Tsp. 5 S, Blk. 32. On this line we find quite a number of rock mounds, but no satisfactory bearing trees or their stumps to identify them, and running North  $12^{\circ} 50'$  West from the S. E. corner of Tsp. 5 S, Blk. 32, we find several rock mounds that appear to be old but nothing to identify them positively.

There have been many surveys made in this locality since the original survey was made and after a rock mound has been in a few years it is impossible to tell its age with any certainty.

Our survey shows that a jog actually exists on the block line between Blocks 32 and 33 at the line between Tsp. 4 and 5 S. We find that the west block line of Tsp. 5 S is 329 varas North  $77^{\circ}$  East from the west block line of Tsp. 4 S, Blk. 32.

Paul McCombs and T. H. Seay show this jog to be 342 varas on their map.

counter 79115

x 12 Blk 32 original

RS<sup>13</sup>



In view of the fact that there was an agreement made between J. L. Glass and W. B. Brown (who is represented by Mr. W. L. Foster), the private owners along the block line between Blocks 31 and 32, Twp. 5 S., to abide by a decision between us as to the location of said block line, provided the State and the owners of the T. & P. R. R. lands would also enter into this agreement, we recommend that said line be run North  $12^{\circ} 50'$  West variation  $13^{\circ}$  East from the S. W. corner of Twp. 5 S., Blk. 32, to an intersection with the south township line of Twp. 4 S., Blk. 31, at a point 492 varas North  $13^{\circ}$  East from the S. E. corner of Twp. 4 S., Blk. 32. This line leaves the possessions in the south part of Twp. 5 S., Blks. 31 and 32 undisturbed and all other sections their full acreage except Section 2, Block 31, which will be reduced considerably but will have more than originally returned by Powell and Harris in their survey.

There is an excess in the township north and south, which we recommend be thrown in the north tier of sections as is indicated by the corners found on the west block line, Twp. 5 S., Blk. 32.

(seal)

*W. F. Kelly*  
 County Surveyor, Storing County.  
 Licensed State Land Surveyor.

(seal)

*Claude Becket*  
 Licensed State Land Surveyor.

counter 49116

X 22.19 is printed

Rs<sup>14</sup>



# FIRST NATIONAL BANK

CAPITAL - - - - \$60,000.00  
UNDIVIDED PROFITS - - \$80,000.00

STERLING CITY, TEXAS

5/26/27.

Hon. J. St. Hill

Seneca Mo.

Dear Friend,

Mr. Cole has just informed me that Mr. H. O. Brown of Santa Anna was up here yesterday to see me, but he left home early and came back late. Therefore not knowing was coming did not go to see him he left message with Mr. Cole for me, something about writing letter to Hon. J. V. Robinson about this land. Well he would go to Austin about the time the letter got there etc, I don't know what he wants me to say in the letter. I feel that the Kellis survey is unfair to land owners in the block except Mr. Glass & Mr. Currie therefore I would not accept same if I were Mr. Brown. If they will all agree to take the Reservation line corners for their basis and run the blk. and divide



# FIRST NATIONAL BANK

CAPITAL - - - - \$60,000.00  
UNDIVIDED PROFITS - - \$80,000.00

STERLING CITY, TEXAS

The excess equally between each survey. That will be fair to all and easy to understand, as I understand Mr. J. J. Robinson's letter to you or Mr. ~~Donald~~ Powell. Mr. Robinson does recognize any of the Kellis Beck's sur. as being original and if that is so! Then why not take the Reservation line as a basis, I do think that Mr. Brown should give Mr. Glass notice to not change the fences between them until this matter is settled as according to the Kellis Beck's Survey he would be right to 492 rods in length width and 1900 rods long off the west side of the survey 14 Blk. 39 T. 18 N. R. 40 E. and he might move the fence at any time if you know what Mr. Brown wants kindly let me know. Sorry I did not see him. Yours Truly,  
W. L. Foster



C O P Y

May 18, 1927.

Mr. W. J. Powell,  
502 Republic Bank Bldg.,  
Dallas, Texas.

Dear Sir:

Referring to our conversation of Sunday past in regard to the boundary line between Sections 13, 14, 15, 22, 23 and 24, Block 32, Tsp. 4 South, T & P Ry. Co., Glasscock County as shown by a recent survey of said township, I beg to advise that according to a copy of letter from W. R. Cole and one from C. C. Reynolds enclosed with your letter of March 30th concerning these surveys it would seem that said re-survey is satisfactory to those gentlemen. If they are the owners of the surveys in question and desire to file corrected field notes in this office, I would suggest that they accompany same with a boundary agreement properly executed and recorded as suggested in my letter to you of May 7th.

If you will carefully read the latter part of that letter you will note that same applies to re-survey of both Townships 4 and 5 in Block 32.

Yours very truly, you

/s/ J. T. Robinson

Commissioner

Clarke/M

C O P Y

counter 19119

N'



C O P Y

May 7, 1927.

Mr. W. J. Powell,  
502 Republic Bank Bldg.,  
Dallas, Texas.

Dear Sir:

This is in reference to recent resurvey of Blocks 32, Townships 4 and 5 South, T & P Ry. Co. on the line of Glasscock and Sterling Counties as shown by surveys, maps and report enclosed with your letters of the 30th ult., all of which has been given careful consideration.

From a careful reading of the surveyor's report it does not appear that he is able to positively identify at this time any original corner by original locations called for of any survey in these blocks. The nearest identity it seems is by reputation of the S E Corner of Block 32, Tsp. 5 S, the S W corner of Survey 25 and the S E corner of Survey 37, Block 32, Tsp. 4 S and possibly one or two others that you think are original.

It is noted on the surveyor's map that the surveys in Block 32, Tsp. 4 S are based upon what they take as the original corners above set out and that survey in Tsp. 5 S is based on the corner that they take as the original S E corner of that block and break along the block line between these two

e o p y

counter 49120

N2

2211029 Co RR Bldg X



W. J. Powell #2

Townships.

According to the field notes of the surveys in these blocks they appear to have common lines and corners throughout, and as a matter of legal construction I do not see how these corners can be broken.

If the owners of the surveys in these two townships are satisfied with the survey as made by these surveyors and care to file corrected field notes and plat in this office, same should be accompanied with a boundary agreement entered into and executed by the owners of all sections affected. This agreement should be duly acknowledged and recorded in the two counties before sending same to this office.

This is in answer to both of your letters of March 30th, one with special reference to Block 32, Tsp. 4 S, and the other with reference to both blocks.

Surveyors' maps and report have been retained for the information they contain.

Yours very truly,

/s/ J. T. Robinson

Commissioner.

Clarke/M

C O P Y

counter 49121

N<sup>3</sup>

X 42 JIF 20 2011702



LAW OFFICES  
HILL, NEILL & HILL  
SAN ANGELO, TEXAS

J. W. HILL  
ROBT. T. NEILL  
J. P. HILL

January 13,  
1927.

Mr. W. B. Brown,  
Santa Anna, Texas.

Dear Sir:

We are enclosing you herein copies of two letters, one dated January 11, 1927, from Mr. H. J. Abrams, General Agent of the T. & P. Ry. Co. lands in Sterling County, and one, dated January 12, 1927, from Major W. J. Powell, Engineer, to whom Mr. Abrams has referred the matter for settlement. You will note from Major Powell's letter that he will place a surveyor in the field shortly to run whatever lines may be necessary to settle the matter as definitely as possible. In the letters which we have written to Mr. Abrams heretofore, we have suggested that all parties to be effected by the location of the line to enter into an agreement with reference to the matter and Major Powell suggests that you and the other parties at interest delegate a surveyor to represent you and work with his man on this survey, making it a joint survey by the owners of the T. & P. Ry. Co. lands and other parties interested. We hope that this can be done and will suggest that you take the matter up with Mr. Foster and see what can be done by the parties at interest in the selection of a surveyor to work with Mr. Powell's surveyor in running the original lines and determining where the original surveyors actually put the corners and lines.

We enclose you a carbon of each of our letters to Mr. Abrams and Mr. Powell and would appreciate hearing from you at as early date as you can pass upon the matter.

With kindest regards, we are

Yours truly,

*Hill Neill & Hill*

JWH/nc  
(Encl.)

counter 79122

WA

N<sup>4</sup>



LAW OFFICES  
**HILL, NEILL & HILL**  
SAN ANGELO, TEXAS

J. W. HILL  
ROBT. T. NEILL  
J. P. HILL

January 11, 1927.

*Copied*

Resurvey - Sterling & Glasscock Cos.

Messrs. Hill, Neill & Hill,  
San Angelo, Texas.

Gentlemen:

I have yours of the 7th inst., with reference to an alleged jog in the west line of Block 31, Tsp. 5-S and the east line of Block 32, Tsp. 5-S. It is our desire that the disputed line be amicably and definitely determined and for this purpose we are passing our file to our engineer, Maj. W. J. Powell, Praetorian Bldg., Dallas, Texas, with instructions to handle to a conclusion and you will doubtless hear from him shortly, with a proposition to go over the ground with any other surveyor the other parties interested may select, with a view of determining the proper line.

Yours truly,

(Signed) H. J. Abrams,

General Agent.

PBB-w

*counter 49123*

*WH'*

*N<sup>5</sup>*



January 13,  
1927.

Honorable H. J. Abrams,  
General Agent,  
5024 Republic Bank Bldg.,  
Dallas, Texas.

Dear Sir:

We have your letter of the 11th inst. in reply to ours of the 7th inst. relative to the alleged jog in the west line of Block 31, Twp. 5-S and the east line of 32, Twp. 5-S, T. & P. lands, Sterling County, and note that you have passed this matter to Major W. J. Powell with instruction to handle it to a conclusion. We have just received a letter from Major Powell, dated January 12th, in reference to the matter and acting upon his suggestion, we are today communicating with our client, Mr. W. B. Brown, of Santa Anna, and will also communicate with some of the parties interested in Sterling County and hope to be able to report to you and Major Powell in a short time whether an agreement can be reached to have Major Powell representing you and some surveyor they may select representing them to run the lines and determine the question at issue.

With kindest regards, we are

Yours truly,

JWH/ne

counter 79124

X 46 119 05 011702

N<sup>6</sup>

44<sup>2</sup>



LAW OFFICES  
**HILL, NEILL & HILL**  
SAN ANGELO, TEXAS

J. W. HILL  
ROBT. T. NEILL  
J. P. HILL

January 12, 1927.

*cm*

Messrs. Hill, Neill & Hill,  
San Angelo, Texas.

Gentlemen:

Mr. H. J. Abrams, general agent for the T & P. lands, has turned over to me a file of papers and maps in regard to an alleged jog in the west line of Block 31, Tsp. 5-S and the east line of Block 32, Tsp. 5-S in Sterling and Glasscock counties, and has commissioned me to make the necessary surveys to determine correct location of these lines and to follow the matter through to a conclusion. Accordingly, I shall shortly place a surveyor in the field and will run whatever lines may be necessary to settle this matter as definitely as possible.

I am heartily in accord with the suggestion made in your letter of January 7th to Mr. Abrams that the owners of the land in dispute have a joint survey made, and will be very glad if you or Mr. Brown will delegate a surveyor to represent you and work with our man on this survey. Will appreciate your advising me as to your wishes in this respect as promptly as possible in order that definite arrangements may be made.

Yours very truly,

(Signed) W. J. Powell.

*counter 49125*

*WH<sup>3</sup>*

*N7*



January 13,  
1927.

Major W. J. Powell,  
901 Praetorian Bldg.,  
Dallas, Texas.

Dear Sir:

We are just in receipt of your letter of the 12th inst., and note that Mr. Abrams has commissioned you to make necessary surveys to determine correct location of the west line of Block 31 and Block 32, Tsp. 5-S in Sterling and Glasscock Counties, and that you will shortly place a surveyor in the field and run whatever lines may be necessary to settle the matter as definitely as possible.

We are today taking the matter up with our client and other parties interested, and asking them to delegate a surveyor to represent them in the survey and also to get an agreement with all of the land owners who will be affected by the line to agree that the lines run and established in the survey will be accepted by them, and that they will abide by it. There are quite a number of persons interested and owners of lands in Tsp. 5-S, Blocks 31 and 32, and it may be possible that we will not be able to get all of them to join in such an agreement, but we hope to get those who own lands on the block line between those blocks and particularly in that township to agree to it.

As soon as we can hear from them, will write you.

We are hopeful that this survey can settle the controversy as to the supposed jog and, and if not, we are apprehensive that it will result in some protracted litigation which would necessarily be expensive.

With kindest regards, we are

Yours truly,

JWH/nc

counter 49126

WA 7

X X Z B I R O D g n i n o t e

N 8



LAW OFFICES  
HILL, NEILL & HILL  
SAN ANGELO, TEXAS

J. W. HILL  
ROBT. T. NEILL  
J. P. HILL

May 28

Hon. W. B. Brown  
Santa Anna

Dear Sir

I am enclosing you letters from  
Mr. Foster, from which you will see he  
did not understand your message  
left for him with Mr. Cole. I enclose  
you write him freely what you would  
like to write Mr. Robinson, Commissioner of  
the Land Office.

After you have read his letters, return  
it to me for our files.

Yours truly  
J. W. Hill

counter 49127