

Val Verde COUNTY ROLLED SKETCH NO. 44
Small sketch in the vicinity of Blks. V-8, TM, & JAD. 1
SURVEYED W. T. Hope BY
FILED 7-22-1929

counter 49454

RECEIVED
MAY 11 1900
SCHOOL DISTRICT NO. 1



J. W. T. Hope - County Surveyor of Wal Verde
 County hereby certifies that the foregoing
 sketch is correct, as found by connection
 as shown thereon in red ink
 W. T. Hope
 Co. Surveyor

No further work on map made as
 of funds
 Mr. [unclear]
 returned to [unclear] on [unclear]
 [unclear] [unclear] [unclear] [unclear] [unclear]
 [unclear] [unclear] [unclear] [unclear] [unclear]



11/21
 11/22
 11/23
 11/24
 11/25
 11/26
 11/27
 11/28
 11/29
 11/30

Val Verde COUNTY ROLLED SKETCH NO. "47"

Swath Sk in the Vicinity of Blks VE, TM, & JADI

SURVEYED N. T. Hope
 COUNTY 1924
 10 22 1924

3A 53

TH 40 K5 1151

3P 800

PJ

10

Val Verde COUNTY ROLLED SKETCH NO. "44"

Small sk. in the vicinity of Blks V8, TM, & JADI

SURVEYED

BY W. T. Hope

FILED July 22, 1929

5/2/38 J.W.

number 4457

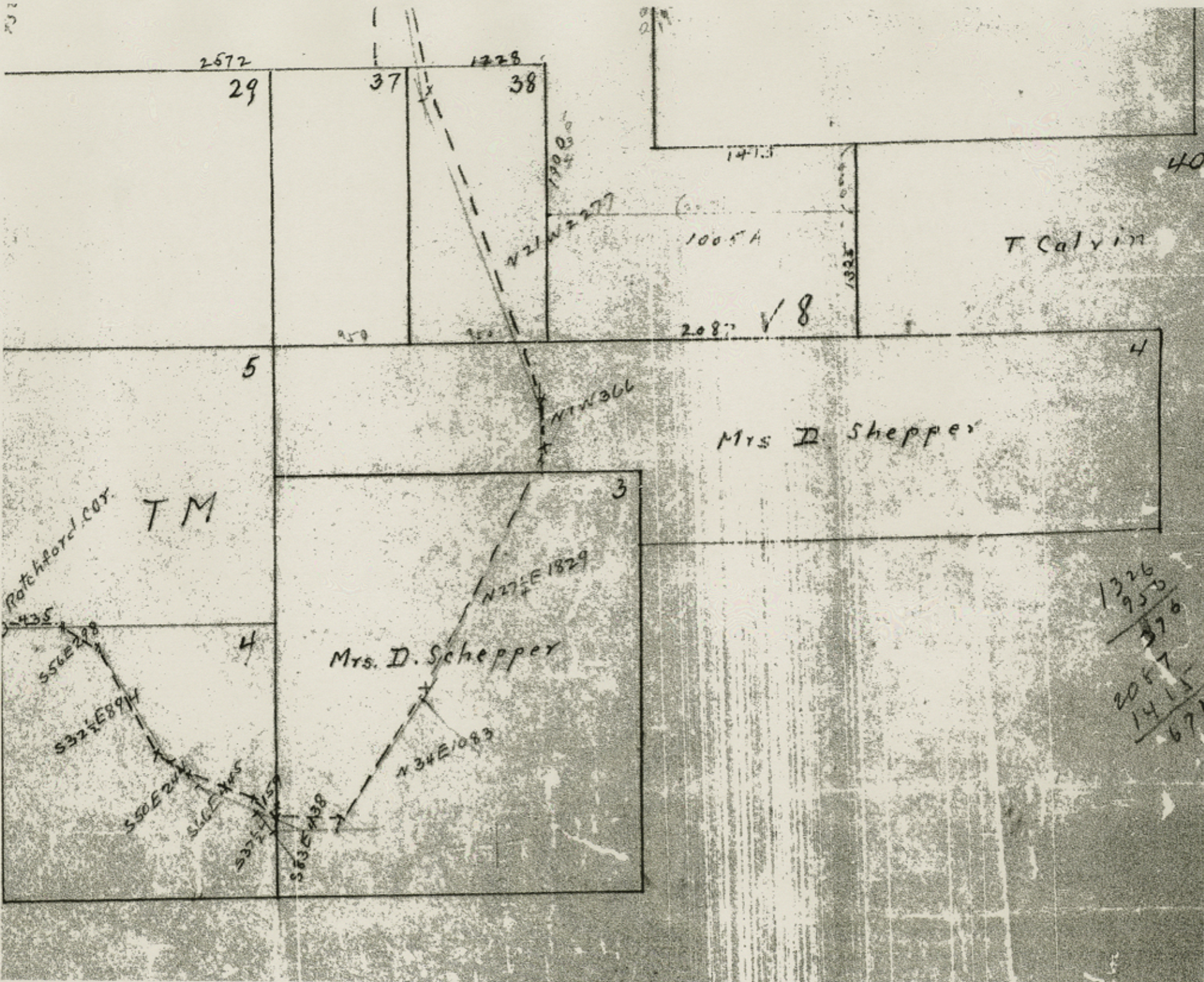
531

5632

J. W. T. Hope, County Surveyor of Wal Verde
County hereby certifies that the foregoing
sketch is correct as found by connection
as shown thereon in red ink

W. T. Hope
Co. Surveyor

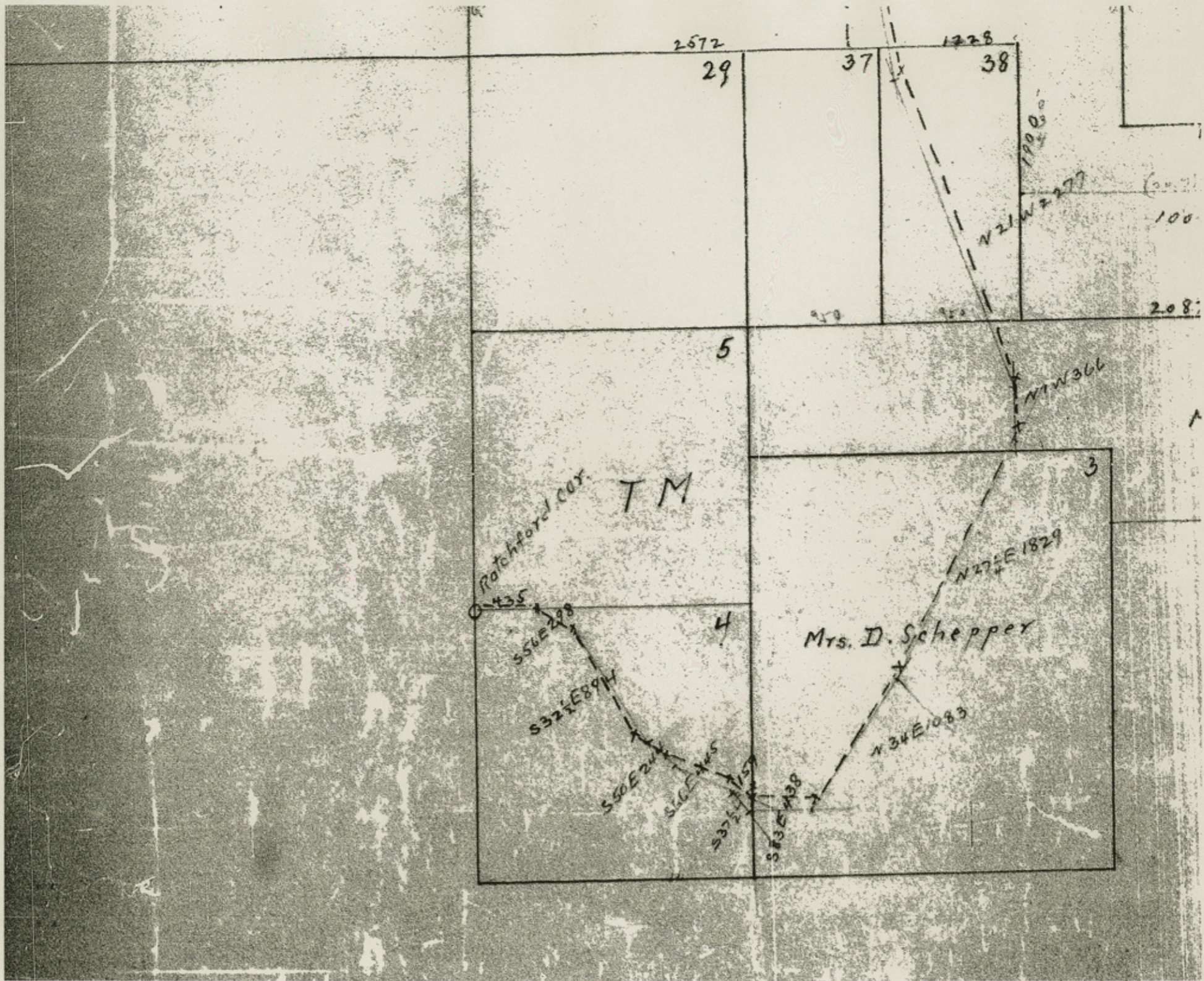
J. W. T. Hoff
County hereby
sketch is c
as shown the



1326
 955

 370
 2057
 1415

 670



J. A. D. I

36

800

32

Fence
3539

1500

2276

1900

36

128

882 A.

J. H. Wakefield
N 10 1/2 W 18 40

34

532

2572

29

37

1228

38

1900

N 21 W 22 77

100

208

61

J. A. D I

800

1500

Fence
3533

32

24

1900

28

882 A.

J. H. Walker field
N10 1/2 W 1840

34

2572

29

1228

37

38

1900

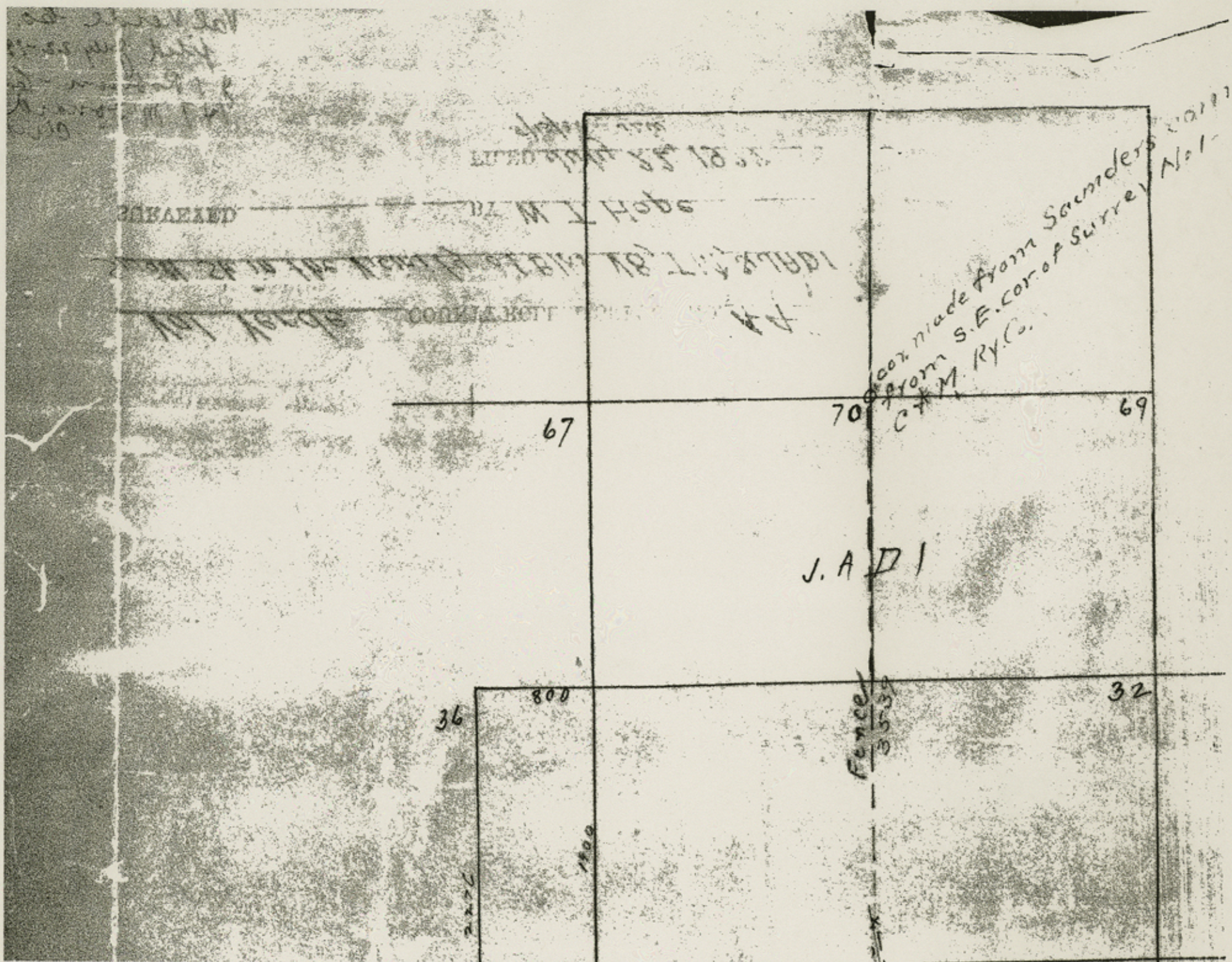
N 21 W 2277

1400

1005 A

T. Calvin

✓ 8



LINED ROAD 85 18.5
 Hobs
 ROAD 18 1.1/2 87.0
 ROAD 1.1/2 87.0

Cox made from Saunders 1917
 from S.E. cor. of Survey No. 1
 C.M. Ry. Co.

67

70

69

J. A. D. I.

36

800

32

Fence
 3535

1400

1881
1881
1881
1881
1881

connection
No. 1 - Block A
cor. made from Saunders
from S.E. cor. of Surrey
C. & M. Ry. Co.

67

70

69

J. A. D. I

800

Fence
3039

32

24

1881