

WILLACY CO. RLD.SK. # 1

— IN FLAT FOLDER —

SAN PAT.

S. — 3682

WILLACY CO. NAVIGATION DISTRICT  
PART OF LAGUNA MADRE

1. Surveyors Plat
2. Copy of Surv. plat (Cancelled)
3. Laguna Madre Sheet 3
4. Copy of Field Notes
5. D. M. D. Sheets.

*counter 49566*

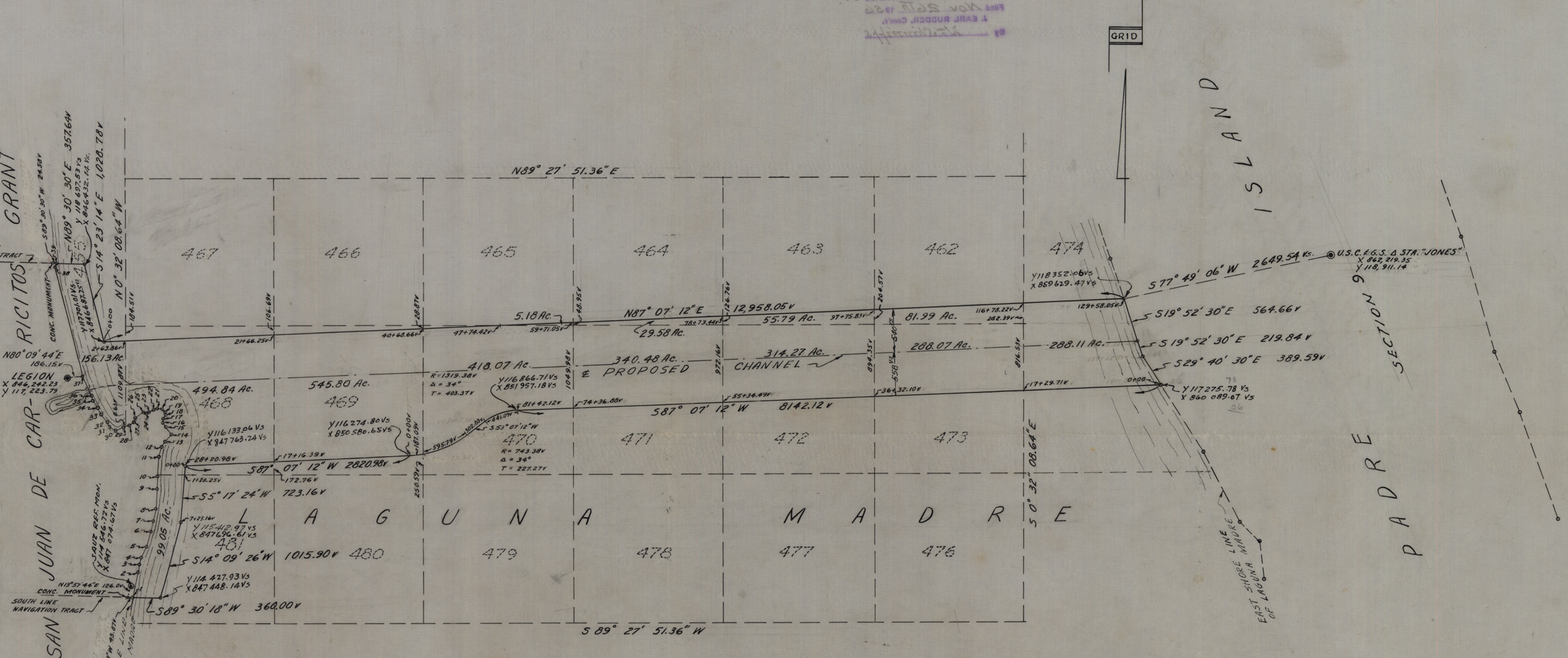


RECEIVED  
 SEP 1 1956  
 GENERAL LAND OFFICE

WILLACY COUNTY, TEXAS  
 IN FIRST FOLDER  
 FILE NO. 3088  
 WILLACY COUNTY  
 M.C. NAV. DISTRICT  
 FILE NO. 3088  
 J. EARL RUDEN, COUNTY CLERK

SHORE-LINE TRAVERSE

COR.-TO-COR.	BEARING	DISTANCE IN FEET
1 2	N11° 22' 10" E	338.97
2 3	N 6° 09' 15" E	96.25
3 4	N18° 59' 15" E	93.27
4 5	N25° 57' 35" E	162.69
5 6	N16° 06' 19" E	187.84
6 7	N 7° 05' 27" E	143.23
7 8	N15° 33' 53" E	157.18
8 9	N4° 47' 10" E	262.96
9 10	N1° 02' 12" W	162.19
10 11	N2° 37' 19" E	251.42
11 12	N15° 28' 34" E	130.60
12 13	N31° 54' 59" E	80.95
13 14	N47° 52' 51" E	127.58
14 15	N41° 46' 31" W	137.13
15 16	N29° 05' 12" W	59.12
16 17	N 7° 47' 07" E	45.15
17 18	N22° 32' 26" E	60.77
18 19	N20° 54' 58" W	40.82
19 20	N38° 20' 47" W	47.77
20 21	N86° 28' 41" W	54.57
21 22	S73° 49' 29" W	43.53
22 23	S55° 33' 18" W	68.87
23 24	S85° 48' 07" W	35.78
24 25	N73° 45' 37" W	36.57
25 26	S55° 42' 08" W	130.54
26 27	S18° 20' 27" W	61.49
27 28	S60° 29' 17" W	74.87
28 29	S63° 47' 35" W	77.26
29 30	S67° 57' 54" W	113.46
30 31	N61° 38' 06" W	95.33
31 32	N14° 02' 44" W	66.31
32 33	N74° 21' 04" W	127.52
33 34	N26° 28' 22" W	96.89
34 35	N32° 15' 12" W	117.67
35 36	N17° 32' 42" W	61.20
36 37	N25° 09' 29" W	274.68
37 38	N14° 23' 14" W	1440.00
38 39	N8° 36' 57" E	44.53



COR. 30 { Y118694.46VS  
 X846074.50VS  
 COR. 1 { Y114424.82VS  
 X847088.15VS

NOTE:  
 1. BEARINGS AND DISTANCES ARE BASED ON THE TEXAS COORDINATE SYSTEM SOUTH ZONE. (PLANE)  
 2. AREAS SHOWN ARE ADJUSTED FROM PLANE TO GEOID.

MAP OF  
 3,117.34 ACRES OUT OF SECTIONS -  
 462, 463, 464, 465, 468, 469, 470, 471,  
 472, 473, 474, 481 & 455  
 LAGUNA MADRE  
 WILLACY COUNTY, TEXAS

PREPARED BY  
 C. L. FABIAN  
 LICENSED STATE LAND SURVEYOR  
 McALLEN, TEXAS

SCALE: 1" = 720 VS

DATE: 6-2-56

SURVEY COMPLETED JULIE 6, 1956

I, C. L. FABIAN, A LICENSED LAND SURVEYOR, DO HEREBY CERTIFY THE ABOVE PLAT TO BE A TRUE AND CORRECT REPRESENTATION OF SURVEY MADE BY ME ON THE GROUND, AND THAT MARKS SHOWN ARE AS FOUND AT THE TIME OF THIS SURVEY.  
 C. L. Fabian  
 C. L. FABIAN  
 LICENSED LAND SURVEYOR  
 McALLEN, TEXAS.



RECEIVED  
 NOV 26 1956  
 GENERAL LAND OFFICE

counter 99567







Wilcox Co. Rd. Ste. 1

SHARE

24

2M

MAN

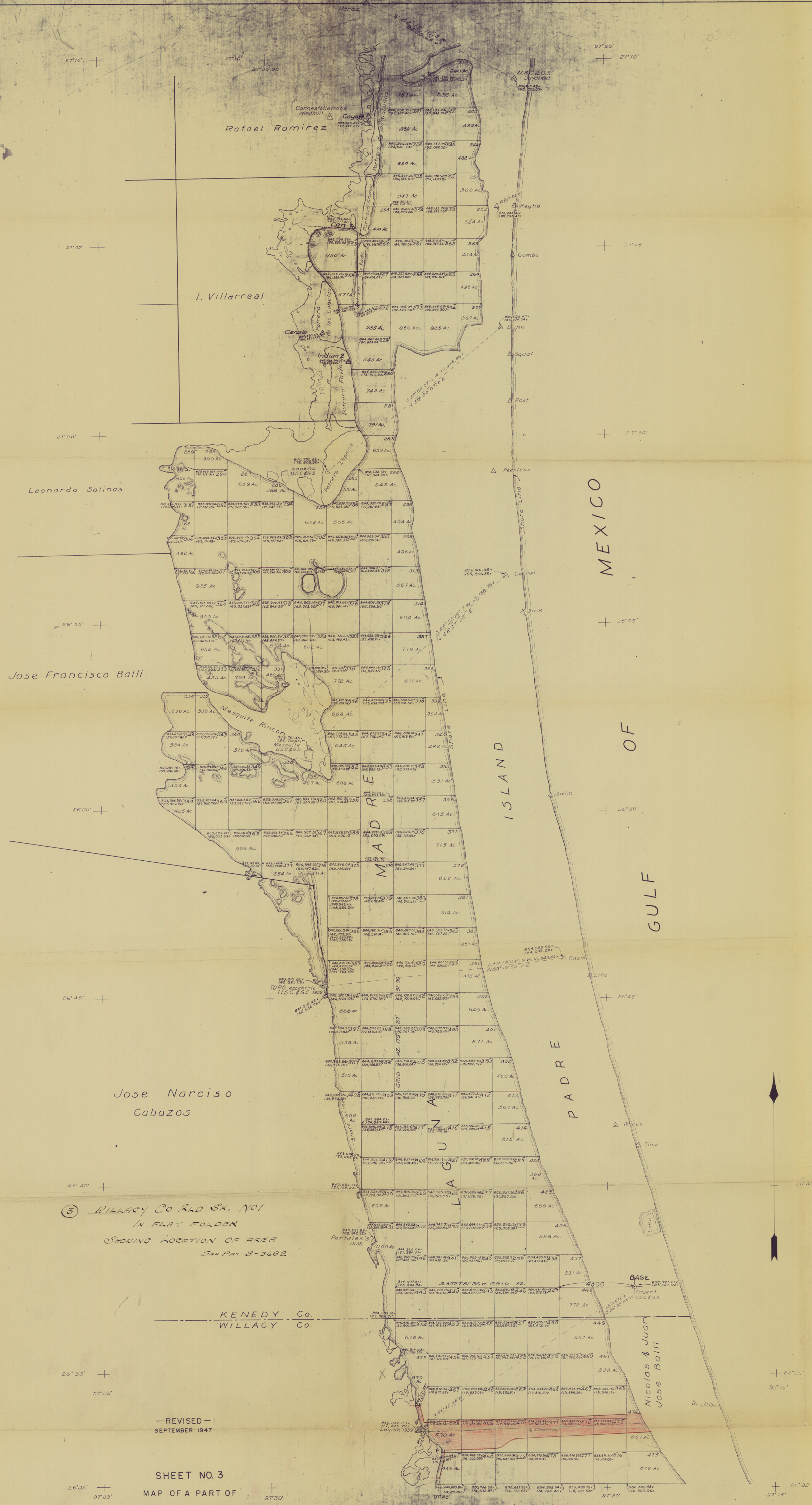
**RECEIVED**

SEP 5 1956

**GENERAL LAND OFFICE**

counter 49569





③ WILLACY CO. RAD. SK. NO. 1  
 IN FLAT FOLDER  
 SHOWING LOCATION OF AREA  
 SAN PAT. 5-3682

KENEDY Co.  
 WILLACY Co.

—REVISED—  
 SEPTEMBER 1947

SHEET NO. 3  
 MAP OF A PART OF  
**LAGUNA MADRE**  
 IN  
 KENEDY AND WILLACY COUNTIES  
 SHOWING  
 SUBDIVISION FOR MINERAL DEVELOPMENT  
 BY  
 BASCOM GILES COMMISSIONER GENERAL LAND OFFICE  
 AUSTIN, TEXAS - OCT. 31, 1946 - SCALE: 1" = 2000 VARAS  
 COMPILED BY CURTIS R. HALE  
 TRACED BY W. S. B.

For details and legends, see J.S. Boyles map  
 filed in G.L.O. office, Austin, Texas.  
 Means of shore line at mainland traced from  
 U.S.C.G.S. Chart No. 1227.  
 All regular interior tracts are 1 mile square and  
 each center is 640 varas from each side, other wise  
 indicated. Bearings of shore line surveys as  
 shown on this map are approximate.

NOTE - The base is the U.S.C.G.S. Triangulation Station,  
 Desert (1939). Lat. 26° 37' 18.03", Long. 97° 19' 11.96".  
 The base line is a line run due west on true course through  
 this station. The starting point of this system of tracts is the  
 N.E. corner of Tract 471, located on this base line 4300 varas  
 west of said Triangulation Station Desert.  
 The boundary line of these tracts except where controlled  
 by the shore line are parallel or perpendicular to the base line.



VINSON, ELKINS, WEEMS & SEARLS  
ATTORNEYS AT LAW  
ESPERSON BUILDING  
HOUSTON, TEXAS

D-764

December 21, 1956

Judge Charles R. Johnson  
Port Director  
Willacy County Navigation District  
160 South 7th Street  
Raymondville, Texas

Dear Judge Johnson:

Enclosed please find two copies of a letter we have received today from Mr. William Shirriffs of the General Land Office. The letter is self-explanatory. When the corrections have been made, please notify Mr. Shirriff directly and kindly send us a copy of this notification.

With the writer's kindest personal regards and best wishes for a Merry Christmas, we remain

Yours very truly,

VINSON, ELKINS, WEEMS & SEARLS

By

*WMB*  
Victor W. Bouldin

*8*

52/213a  
Encls.

cc: Mr. William Shirriffs ✓  
Engineering Department  
General Land Office  
Austin, Texas

RECEIVED

DEC 22 1956

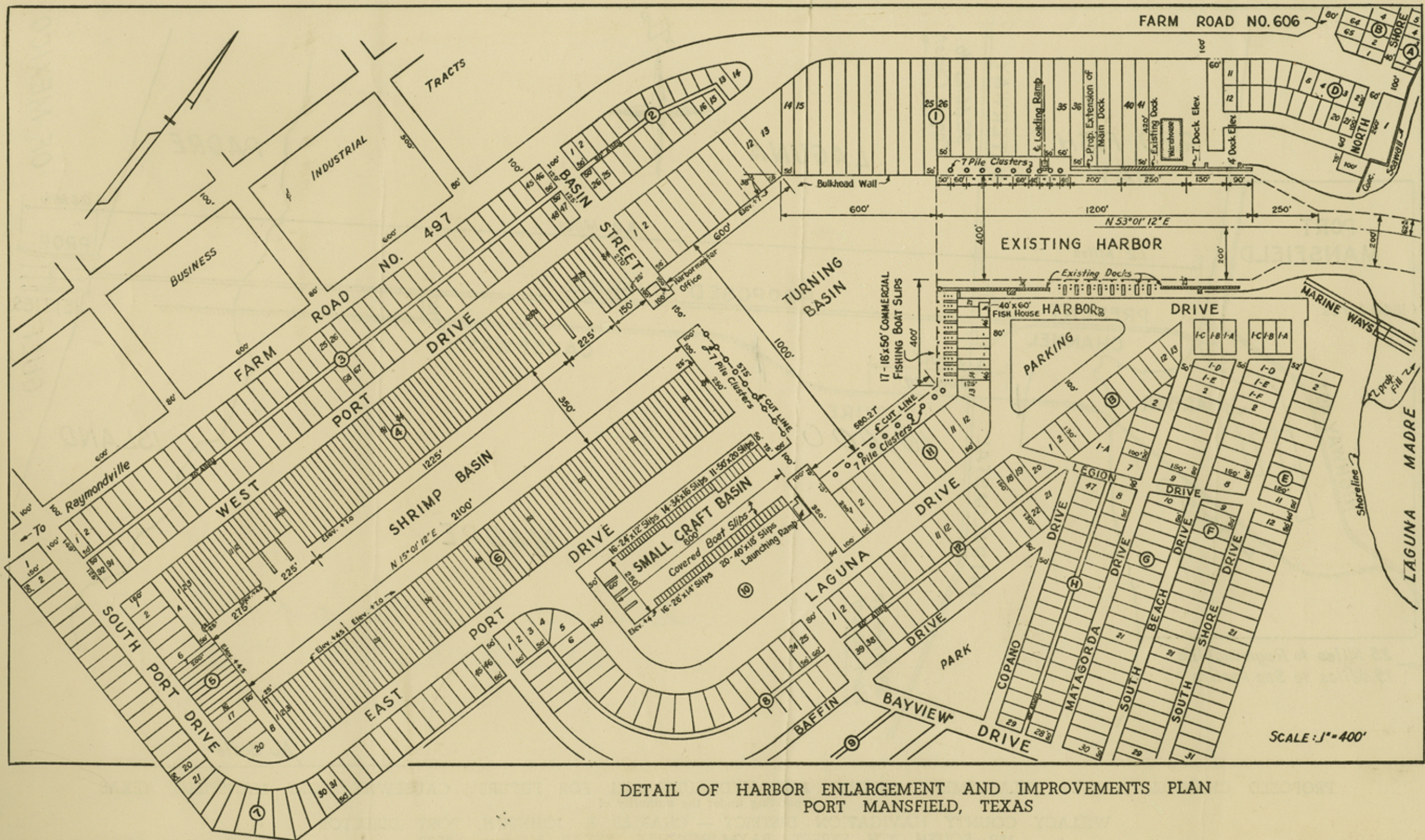
GENERAL LAND OFFICE

COPY

counter 49571

SHIRRIFFS  
GENERAL LAND OFFICE  
AUSTIN TEXAS  
52-213a

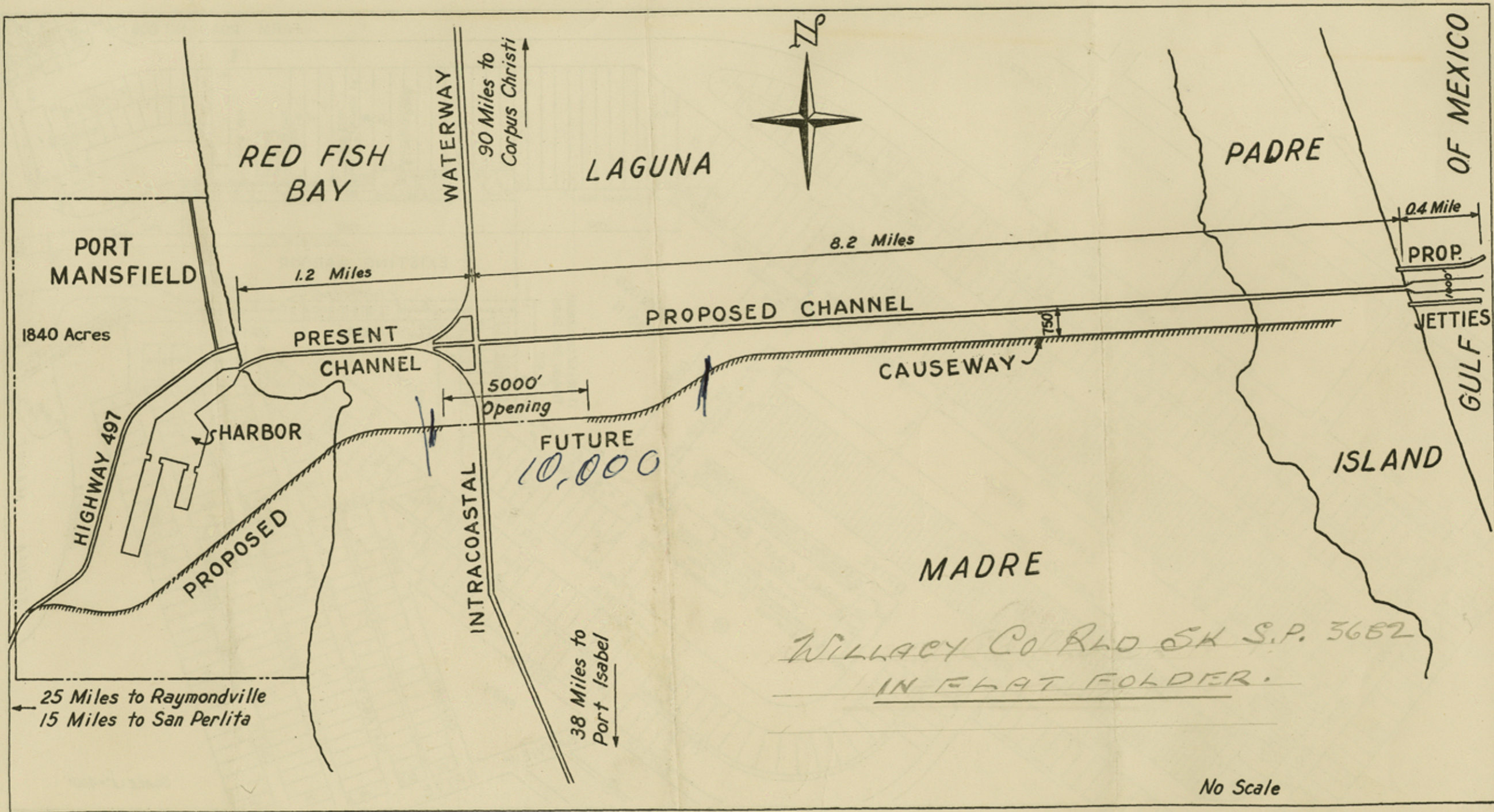




DETAIL OF HARBOR ENLARGEMENT AND IMPROVEMENTS PLAN  
 PORT MANSFIELD, TEXAS

All lots and blocks subject to final survey location on the ground by engineers.





PROPOSED CHANNEL, HARBOR ENLARGEMENT, JETTIES AND HYDRAULIC FILL FOR FUTURE CAUSEWAY, PORT MANSFIELD, TEXAS

Operating under the authority of

WILLACY COUNTY NAVIGATION DISTRICT — CHARLES R. JOHNSON, PORT DIRECTOR

152 SOUTH 7TH STREET, RAYMONDVILLE, TEXAS—MURRAY 9-3332

JAS. V. CURNUTTE, CONSULTING ENGINEER

counter 49573

Willacy Co. Rld. Sk. 1

(Over)



PORT MANFIELD OILC - VARI -  
see old sheet for coord. in feet

(5645.3757) x Var. = 1.2

MULTIPLY BY = 0.00017736

Course	Distance in Varas	N		S		E		W		N	E
		+	-	+	-	+	-	+	-		
Section	N 80° 00' 44" E	184.8	1728592	9752524	31.8		182.2				
Bayou	N 144° 23' 14" W	1440.0	9616576	2614759	1344.2			357.0		499074	
	N 14° 36' 07" E	42.8	9777150	1498076	44.2		6.2		701.2	31214	
	N 20° 50' 30" E	257.0	2015711	9442673	8.2		357.0		848.2	1058	
NW	S 14° 23' 14" E	1028.7	9246376	2474734		996.0	257.0			267685	
NNE	N 57° 07' 12" E	1058.2	3592443	9497379	661.2		12941.0		13465.0	8767257	
NE	S 19° 32' 30" E	524.6	9422426	7349692		531.0	191.2		26544.0	14725170	
Echoull	S 19° 52' 30" E	219.0				206.0	74.2		20266.0	5564603	
	S 28° 41' 20" E	388.0	6674576	4460796		336.0	192.0		27182.0	9124654	
SE	S 87° 07' 12" W	5142.2	6502413	9477370		409.0		8131.0	49194.0	7862650	
PO	"	227.2				11.0		706.0	10336.0	129748	
PI	S 53° 07' 12" W	227.2	6001410	7997942		136.0		171.0	10427.0	1422186	
PT	"	322.0				181.0		242.0	20003.0	1818005	
PC	"	423.0				242.0		322.0	9432.0	2074460	
PI	S 87° 07' 12" W	443.0	6502443	9477370		20.0		402.0	1712.0	176611	
PT	"	2820.2				141.0		2817.0	5492.0	778530	
185100	S 5° 17' 24" W	723.0	9954401	0721467		720.0		6.0	2608.0	1876374	
	S 14° 09' 26" W	1015.0	9646212	2452765		925.0		246.0	2293.0	2259143	
SSE	S 80° 30' 18" N	260.0	2026393	3222626		3.0		329.0	1684.0	5240	
171 1/2	N 11° 22' 10" E	330.0	9103764	1471345	330.0		66.0		1391.0	462523	
217 2/3	N 6° 09' 15" E	96.0	9447370	1072041	95.0		10.0		1468.0	140578	
259 2/3	N 10° 59' 15" E	93.0	9453764	3283619	88.0		30.0		1509.0	133148	
451 2/3	N 26° 57' 35" E	162.0	9491020	4377322	146.0		71.0		1611.0	285598	
521 2/3	N 16° 36' 12" E	187.0	9202536	2774081	180.0		62.0		1734.0	313016	
317 2/3	N 7° 05' 27" E	143.0	9422577	1284427	142.0		17.0		1804.0	256437	
436 2/3	N 15° 35' 51" E	157.0	9603280	2473267	157.0		42.0		1864.0	282262	
711 2/3	N 4° 47' 10" E	262.0	9765131	3714563	262.0		21.0		1928.0	505271	
420 2/3	N 1° 02' 12" W	162.0	9493367	4184928	162.0			2.0	1947.0	315763	
619 2/3	N 2° 37' 18" E	251.0	9522621	6452459	251.0		11.0		1955.0	491219	
362 2/3	N 15° 28' 34" E	130.0	9437411	2464966	125.0		24.0		2002.0	251991	
11 1/2	N 31° 54' 59" E	80.0	9482205	5426112	68.0		42.0		2079.0	142903	
13 1/2	N 47° 50' 51" E	122.0	6704747	7477616	85.0		94.0		2217.0	189706	
14 1/2	N 41° 46' 11" W	137.0	7457616	6462107	102.0			91.0	2220.0	227091	
15 1/2	N 28° 05' 12" N	59.0	2732164	4761281	51.0			24.0	2100.0	108527	
16 1/2	N 7° 47' 07" E	48.0	9907227	1864810	44.0			6.0	2077.0	92939	
17 1/2	N 20° 12' 26" E	60.0	9266084	3783171	56.0			23.0	2107.0	118277	
18 1/2	N 20° 54' 53" W	40.0	9341042	3579006	38.0			14.0	2115.0	80680	
19 1/2	N 38° 20' 27" W	42.0	7142249	6204142	37.0			29.0	2071.0	77607	
20 1/2	N 64° 05' 41" W	84.0	2619809	3921113	3.0			54.0	1987.0	6658	
21 1/2	S 73° 49' 20" W	43.0	2782767	9604140		12.0		41.0	1991.0		22942
22 1/2	S 56° 33' 18" W	68.0	5055149	7244095		38.0		56.0	1792.0		69827
23 1/2	S 25° 41' 07" W	25.0	9782049	7472170			2.0	35.0	1788.0		4455
24 1/2	N 71° 45' 31" W	36.0	2746561	9601000	10.0			35.0	1629.0		16669
25 1/2	S 55° 42' 01" W	130.0	6004440	1242201		73.0		107.0	1486.0		109348
26 1/2	S 10° 24' 23" W	61.0	9492015	3146619		52.0		19.0	1359.0		79344

Course	Distance in Varas	N		S		E		W		N	E	
		+	-	+	-	+	-	+	-			
27 1/2	S 73° 49' 20" W	740.0	4426859	2732290		30.0		65.0	1270.0		47915	
28 1/2	S 56° 33' 18" W	77.0	4426859	2732290		41.0		69.0	1140.0		24918	
29 1/2	S 25° 41' 07" W	113.0	3782249	4202540		42.0		105.0	958.0		21116	
30 1/2	N 71° 45' 31" W	36.0	2746561	9601000		48.0		73.0	776.0		25131	
31 1/2	N 38° 20' 27" W	42.0	7142249	6204142		64.0		16.0	676.0		43540	
32 1/2	N 44° 01' 28" W	127.0	7152049	6404574		71.0		29.0	571.0		62124	
33 1/2	N 64° 05' 41" W	84.0	2619809	3921113		86.0		43.0	439.0		37091	
34 1/2	N 32° 15' 12" W	117.0	7452047	5704037		94.0		62.0	323.0		32165	
35 1/2	N 17° 45' 31" W	61.0	9492015	3146619		59.0		15.0	750.0		14706	
36 1/2	N 25° 37' 12" W	27.0	9252185	4221167		24.0		116.0	116.0		29081	
						5222.0		5222.0	14546.0		14546.0	
										13461955	43075265	
										-13461955		
										2	35218310	

17006655 x 0.00017736 = 3,118.77 Ac.

Scale factor 999749 3,118.77 Ac.  
 3,117.24 Ac.  
 Less Small ARC 2.73 Ac. ✓  
 3,116.46 Ac.  
 Plus Small ARC 0.88 Ac. ✓  
 3,117.34 Ac.

NOTE: Coordinates in field notes  
 and on map are from computation  
 based on feet.  
 Minor variations are result of  
 converting feet to Varas.

$(1317^{29} \times 443^{27}) - (2638^{26} \times 785 \times 090000) = 1570 \text{ } ^{\circ} \text{ } \times 10^3 = 2.78 \text{ Ac}$   
 $(743^{28} \times 277^{27}) - (14867^{26} \times 785 \times 090000) = 498 \text{ } ^{\circ} \text{ } \times 10^3 = 0.88 \text{ Ac}$

Area as reduced from individual  
 tracts 3117.36  
 0.002 Ac difference



Willacy Co. Rld. Sk 1

D-660

WILLACY CO RLD SK NO 1  
IN FLAT FOLDER.

SAN PAT S-3682

(5)

RECEIVED

NOV 26 1956

GENERAL LAND OFFICE

counter 49575



LAGUNA MADRE SURVEY (PORT MANFIELD) (PROPOSED (MINNE))

PA	Obs	Sum	N	S	E	W	+	-	+	-	N	E
1	N 8° 36' 57" E	123	7877150	1498096	122	18	18	2266			329584	2350188
2	N 89° 30' 30" E	993	0085811	9996371	8	993	1030	8780			329706	2350206
3	S 14° 23' 14" E	2857	7636336	2444739	2768	710	2735		7567847		329715	2351200
4	N 87° 07' 12" E	35994	0502443	9987370	1868	35994	39393			71243264	329747	2351710
5	S 14° 52' 30" E	1561	7404366	3399692	1475	533	75775			111922403	329755	2351759
6	S 24° 40' 30" E	610	"	"	574	207	76416			44000758	329760	2351792
7	S 87° 07' 12" W	1032	3648476	4450796	940	535	77359			72799024	329706	2351800
8	"	22617	0502443	9987370	1136	22617	55307			62849137	329766	2351836
9	"	631	"	"	31	630	32018			1017885	329629	2351847
10	S 53° 07' 12" W	631	6091410	7997982	578	672	29774			11727329	329598	2351917
11	"	841	"	"	504	672	29774			15031495	329219	2351912
12	"	1120	"	"	672	896	28205			18966876	329717	2351739
13	S 87° 07' 12" W	1120	0502443	9987370	56	1119	26190			1474513	329305	2351843
14	"	7836	"	"	393	7826	17245			6789725	329795	2351822
15	S 5° 17' 24" W	2001	9157401	0921368	2000	185	9233			18469379	329591	2351917
16	S 14° 09' 24" W	2821	7696212	2445935	2736	690	8358			22870341	329591	2351712
17	S 14° 30' 18" W	1000	0086393	9997627	8	999	6664			57613	317855	2351022
18	N 10° 22' 10" E	941	7103764	1471345	923	185	5553			5403670	318767	2351022
19	N 6° 09' 15" E	267	7142370	1472041	265	267	6061			1612967	318767	2351022
20	N 13° 57' 15" E	254	9455946	3252619	244	84	6181			1514303	319035	2351022
21	N 25° 57' 35" E	451	8491020	4977392	406	197	6463			2625396	319226	2351022
22	N 16° 02' 19" E	51	7607536	2774011	501	144	6165			3411677	319666	2351022
23	N 7° 05' 27" E	397	7923519	1234427	314	49	6499			2763547	320188	2351663
24	N 15° 33' 53" E	426	7633240	2683267	420	117	7165			3013851	320582	2351712
25	N 4° 47' 10" E	720	7765131	0134163	707	60	7343			5345603	321003	2351829
26	N 1° 02' 12" W	450	7998363	0180423	450	8	7376			3351978	321731	2351890
27	N 2° 37' 19" E	698	9929531	0457432	677	31	7420			5176965	322171	2351882
28	N 15° 21' 34" E	362	7637418	2668364	344	96	7544			2639357	322479	2351814
29	N 10° 54' 59" E	224	8488205	5286812	190	118	7764			1492116	323219	2351411
30	N 47° 52' 01" E	354	7606746	7417516	237	262	8146			1936360	323426	2351130
31	N 41° 46' 31" W	364	7457630	6062167	214	253	8153			2316711	323657	2351379
32	N 20° 05' 12" W	164	8788741	4861321	143	79	7822			1122479	323901	2351130
33	N 7° 47' 07" E	125	9947833	1354610	124	16	7759			964172	324095	2351059
34	N 22° 32' 26" E	161	7612014	3233373	155	64	7841			1222492	324209	2351076
35	N 20° 54' 59" W	113	9341142	3570006	105	40	7166			833165	324360	2351141
36	N 31° 26' 48" W	132	7647713	6264142	104	52	7716			905755	324471	2351100
37	N 16° 21' 41" W	151	0614301	9181113	9	151	7501			69707	324575	2351118
38	S 55° 33' 11" W	191	5856149	8242695	101	116	7241			243870	324594	2351667
39	S 15° 41' 17" W	49	0782043	7713170	72	99	4710			753952	324442	2351593
40	N 71° 45' 37" W	101	2792568	9641000	28	97	6513			185061	324417	2351494
41	S 58° 42' 18" W	362	5234940	3261201	204	299	6116			1249800	324214	2351077

LAGUNA MADRE SURVEY (PORT MANFIELD) (PROPOSED (MINNE))

Obs	Sum	N	S	E	W	+	-	+	-	N	E	
1	S 18° 20' 27" W	170	9492015	3146670	162	53	5763			944310	324259	2351047
2	S 60° 29' 17" W	207	4926050	8702530	102	181	5521			566422	324097	2351043
3	S 63° 47' 35" W	214	4416146	8972049	94	192	5155			478589	323996	2351862
4	S 67° 57' 54" W	315	3751724	9269544	118	292	4670			552217	323900	2351669
5	N 61° 38' 06" W	264	4750761	8799399	125	233	4145			521523	323792	2351377
6	N 14° 02' 44" W	184	7701031	2426933	178	44	3867			691101	323907	2351144
7	N 44° 21' 04" W	354	7150694	6990534	253	247	3575			905513	324016	2351099
8	N 26° 28' 27" W	249	8951463	4457724	240	119	3207			772224	324331	2351652
9	N 32° 15' 12" W	326	8456968	5336637	276	174	2913			805216	324570	2351732
10	N 17° 32' 42" W	170	9534905	3014547	162	51	2687			435631	324877	2351557
11	N 25° 09' 24" W	762	9051315	4251168	690	324	2311			1546677	325019	2351504
12	N 14° 23' 14" W	4000	7646316	2444739	3874	993	993			3850218	325710	2351182
13	"				1450	1450	4040			128610865	400323101	2350181

$128610865 - 128610865 = 0$   
 $2127172236$   
 $135856118 \div 43500 = 3,118.83 = 9992465$   
 $994849 \times 3118.83 \text{ Grid Ac} = 3,119,076$   
 $3119.30 \text{ Surface Area}$   
 $2.78$   
 $3116.52$   
 $0.88$   
 $3117.40 \text{ Ac}$   
 $3117.84 = \text{Map added from lot area}$   
 $329642.37 + 235020477 = 329652.80 + 234152.93 = 335705.73 + 5347.84$   
 $0.0062773 = N 89^\circ 30' 26" E$   
 $329706.23 + 235020477 = 329692.37 + 234152.93 = 335705.73 + 5347.84$   
 $13.866 + 2150131.76 = 66.01$   
 $\text{Cat. } 2072413 \text{ N } 79^\circ 17' 30" \text{ W}$   
 $\text{Sum} = 67.41$   
 $189 \quad 109.32$   
 $25$   
 $104.07$   

N 8° 36' 57" E	123	7877150	1498096	122	18
N 89° 30' 30" E	993	0085811	9996371	8	993
S 14° 23' 14" E	2857	7636336	2444739	2768	710



Willacy Co. Rld Sk 1

10-660

RECEIVED

NOV 26 1956

GENERAL LAND OFFICE

Willacy Co Rld Sk. No 1

IN FLAT FOLDER

SAN PAT 8-3682

(5)



GRANTEE

SUR. No.

BLK.

COUNTY

STATE

SURVEYED BY

DATE

CALCULATED BY

DATE SEP 27 56

877-154-5M

STA.	COURSE	DISTANCE	COS	SINE	LATITUDES		DEPARTURES		D. M. D.	N. D. A.	S. D. A.
					N	S	E	W			
	N 14 23 14 W	- 1440	96866	24841	1394 <sup>9</sup>			357 <sup>2</sup>	370 <sup>1</sup>		
	N 8 36 57 E	- 44 <sup>53</sup>	98871	14982	44 <sup>-</sup>		6 <sup>2</sup>		6 <sup>2</sup>		
	N 89 30 30 E	- 357 <sup>64</sup>	844	99996	3 <sup>-</sup>		357 <sup>6</sup>		371 <sup>-</sup>		
	S 14 23 14 E	✓ 1028 <sup>78</sup>	96866	24841		996 <sup>5</sup>	255 <sup>6</sup>		984 <sup>2</sup>		
	N 87 7 12 E	✓ 12958 <sup>05</sup>	5030	99873	651 <sup>8</sup>		12941 <sup>6</sup>		14181 <sup>4</sup>		
	S 19 52 30 E	- 784 <sup>5</sup>	94039	34011		737 <sup>7</sup>	266 <sup>8</sup>		27389 <sup>8</sup>		
	S 29 40 30 E	✓ 389 <sup>59</sup>	86878	49521		338 <sup>5</sup>	192 <sup>9</sup>		27849 <sup>5</sup>		
	S 87 7 12 W	✓ 8142 <sup>12</sup>	5030	99873		409 <sup>5</sup>		8131 <sup>8</sup>	19910 <sup>6</sup>		
↖	S 70 7 12 W	434 <sup>68</sup>	34011	94039		147 <sup>8</sup>		408 <sup>8</sup>	11370 <sup>-</sup>		
	S 53 7 12 W	✓ 302 <sup>83</sup>	60019	79986		181 <sup>8</sup>		242 <sup>2</sup>	10719 <sup>-</sup>		
↙	S 70 7 12 W	771 <sup>50</sup>	34011	94039		262 <sup>4</sup>		725 <sup>5</sup>	9751 <sup>3</sup>		
	S 87 7 12 W	✓ 2820 <sup>98</sup>	5030	99873		141 <sup>9</sup>		2817 <sup>4</sup>	6208 <sup>4</sup>		
	S 5 17 24 W	✓ 723 <sup>16</sup>	99575	9208		720 <sup>1</sup>		66 <sup>6</sup>	3324 <sup>4</sup>		
	S 14 9 26 W	✓ 1015 <sup>9</sup>	96966	24446		985 <sup>1</sup>		248 <sup>2</sup>	3009 <sup>5</sup>		
	S 89 30 18 W	- 360	873	99996		3 <sup>1</sup>		360 <sup>-</sup>	2401 <sup>2</sup>		
	N 11 22 10 E	- 338 <sup>97</sup>	98039	19709	332 <sup>3</sup>		66 <sup>8</sup>		2108 <sup>-</sup>		
	N 6 9 15 E	✓ 96 <sup>25</sup>	99424	10713	95 <sup>7</sup>		10 <sup>3</sup>		2185 <sup>1</sup>		
	N 18 59 15 E	- 93 <sup>27</sup>	94561	32529	88 <sup>2</sup>		30 <sup>3</sup>		2225 <sup>7</sup>		
	N 25 57 35 E	✓ 162 <sup>64</sup>	89905	43785	146 <sup>2</sup>		71 <sup>2</sup>		2327 <sup>2</sup>		
	N 16 6 19 E	✓ 187 <sup>84</sup>	96078	27731	180 <sup>5</sup>		52 <sup>1</sup>		2450 <sup>5</sup>		
	N 7 5 27 E	- 143 <sup>23</sup>	99237	12331	142 <sup>1</sup>		17 <sup>2</sup>		2520 <sup>2</sup>		
	N 15 33 53 E	- 157 <sup>18</sup>	96332	26836	151 <sup>4</sup>		42 <sup>2</sup>		2580 <sup>2</sup>		
	N 4 47 10 E	- 262 <sup>96</sup>	99652	8339	262 <sup>-</sup>		21 <sup>9</sup>		2644 <sup>3</sup>		
	N 1 2 12 E	✓ 162 <sup>19</sup>	99984	1803	162 <sup>2</sup>		2 <sup>9</sup>		2669 <sup>1</sup>		
	N 2 37 19 E	✓ 251 <sup>42</sup>	99896	4565	251 <sup>2</sup>		11 <sup>5</sup>		2683 <sup>5</sup>		
	N 15 28 34 E	✓ 130 <sup>6</sup>	96371	26696	125 <sup>9</sup>		34 <sup>9</sup>		2729 <sup>9</sup>		
	N 31 54 59 E	- 80 <sup>95</sup>	84882	52869	68 <sup>7</sup>		42 <sup>8</sup>		2807 <sup>6</sup>		

counter 49578



GRANTEE \_\_\_\_\_ SUR. No. \_\_\_\_\_ BLK. \_\_\_\_\_ COUNTY \_\_\_\_\_ STATE \_\_\_\_\_  
 SURVEYED BY \_\_\_\_\_ DATE \_\_\_\_\_ CALCULATED BY \_\_\_\_\_ DATE \_\_\_\_\_

877-154-5M

STA.	COURSE	DISTANCE	COS	SINE	LATITUDES		DEPARTURES		D. M. D.	N. D. A.	S. D. A.
					N	S	E	W			
N 47 52 51 E ✓	127 <sup>58</sup>	67064	74178	85 <sup>6</sup>			94 <sup>6</sup>		2945 <sup>-</sup>		
N 41 46 31 W ✓	137 <sup>13</sup>	74567	66632	102 <sup>3</sup>				91 <sup>4</sup>	2948 <sup>2</sup>		
N 29 5 12 W ✓	59 <sup>12</sup>	87391	48608	51 <sup>7</sup>				28 <sup>7</sup>	2828 <sup>1</sup>		
N 7 47 7 E ✓	45 <sup>15</sup>	99079	13543	44 <sup>7</sup>			6 <sup>1</sup>		2805 <sup>5</sup>		
N 22 32 26 E ✓	60 <sup>77</sup>	92366	38322	56 <sup>1</sup>			23 <sup>3</sup>		2834 <sup>9</sup>		
N 20 54 58 W ✓	40 <sup>82</sup>	93410	35701	38 <sup>1</sup>				14 <sup>6</sup>	2843 <sup>6</sup>		
N 38 20 47 W ✓	47 <sup>71</sup>	78424	62046	37 <sup>5</sup>				29 <sup>6</sup>	2799 <sup>4</sup>		
N 86 28 41 W ✓	54 <sup>57</sup>	6134	99812	3 <sup>3</sup>				54 <sup>5</sup>	2715 <sup>3</sup>		
S 73 49 29 W ✓	43 <sup>53</sup>	27871	96037		12 <sup>1</sup>			41 <sup>8</sup>	2619 <sup>-</sup>		
S 55 33 18 W ✓	68 <sup>87</sup>	56569	82462		39 <sup>-</sup>			56 <sup>8</sup>	2520 <sup>4</sup>		
S 85 48 7 W ✓	35 <sup>78</sup>	7324	99731		2 <sup>6</sup>			35 <sup>7</sup>	2427 <sup>9</sup>		
N 73 45 37 W ✓	36 <sup>57</sup>	27955	96013	10 <sup>2</sup>				35 <sup>1</sup>	2357 <sup>1</sup>		
S 55 42 8 W ✓	130 <sup>54</sup>	56353	82610			73 <sup>6</sup>		107 <sup>8</sup>	2214 <sup>2</sup>		
S 18 20 27 W ✓	61 <sup>49</sup>	94924	31454			58 <sup>4</sup>		19 <sup>3</sup>	2087 <sup>1</sup>		
S 60 29 17 W ✓	74 <sup>87</sup>	49268	87021			36 <sup>9</sup>		65 <sup>2</sup>	2002 <sup>6</sup>		
S 63 47 35 W ✓	77 <sup>26</sup>	44151	89726			34 <sup>1</sup>		69 <sup>3</sup>	1868 <sup>1</sup>		
S 67 57 54 W ✓	113 <sup>46</sup>	37515	92697			42 <sup>5</sup>		105 <sup>2</sup>	1693 <sup>6</sup>		
N 61 38 6 W ✓	95 <sup>33</sup>	47511	87993	45 <sup>3</sup>				83 <sup>9</sup>	1504 <sup>5</sup>		
N 14 2 44 W ✓	66 <sup>31</sup>	97008	24277	64 <sup>3</sup>				16 <sup>1</sup>	1404 <sup>5</sup>		
N 44 21 4 W ✓	127 <sup>52</sup>	71508	69904	91 <sup>2</sup>				89 <sup>1</sup>	1299 <sup>2</sup>		
N 26 28 22 W ✓	96 <sup>89</sup>	89519	44568	86 <sup>7</sup>				43 <sup>2</sup>	1167 <sup>-</sup>		
N 32 15 12 W ✓	117 <sup>67</sup>	84573	53361	99 <sup>5</sup>				62 <sup>8</sup>	1061 <sup>-</sup>		
N 17 32 42 W ✓	61 <sup>20</sup>	95345	30154	58 <sup>4</sup>				18 <sup>5</sup>	979 <sup>7</sup>		
N 25 9 29 W ✓	274 <sup>62</sup>	90520	42499	248 <sup>6</sup>				116 <sup>7</sup>	844 <sup>5</sup>		
					5223 <sup>6</sup>	5223 <sup>7</sup>	14549 <sup>8</sup>	14543 <sup>6</sup>			

3,117<sup>84</sup> Ac.

0<sup>1</sup>

6<sup>2</sup>

51 832 468 41  
 16 716 277 05  
 35 116 191 36

3110 176  
 2 691  
 3112 867 +

counter 49579

3117.84



SURVEYED BY  
WARRANTEE

(5)

WILSON CO RLD SK NO 1  
IN FLAT FOLDER

STATE  
DATE

DATE CALCULATED BY

617-164-23

S. PAT S-3682.

STA	COURSE	DISTANCE	COS	SIN	LATITUDE	DEPARTURE	D.M.D.	N.D.A.	S.D.A.
1	120	100	0.5196	0.8660	120	51.96	100		
2	120	100	0.5196	0.8660	120	51.96	100		
3	120	100	0.5196	0.8660	120	51.96	100		
4	120	100	0.5196	0.8660	120	51.96	100		
5	120	100	0.5196	0.8660	120	51.96	100		
6	120	100	0.5196	0.8660	120	51.96	100		
7	120	100	0.5196	0.8660	120	51.96	100		
8	120	100	0.5196	0.8660	120	51.96	100		
9	120	100	0.5196	0.8660	120	51.96	100		
10	120	100	0.5196	0.8660	120	51.96	100		
11	120	100	0.5196	0.8660	120	51.96	100		
12	120	100	0.5196	0.8660	120	51.96	100		
13	120	100	0.5196	0.8660	120	51.96	100		
14	120	100	0.5196	0.8660	120	51.96	100		
15	120	100	0.5196	0.8660	120	51.96	100		
16	120	100	0.5196	0.8660	120	51.96	100		
17	120	100	0.5196	0.8660	120	51.96	100		
18	120	100	0.5196	0.8660	120	51.96	100		
19	120	100	0.5196	0.8660	120	51.96	100		
20	120	100	0.5196	0.8660	120	51.96	100		
21	120	100	0.5196	0.8660	120	51.96	100		
22	120	100	0.5196	0.8660	120	51.96	100		
23	120	100	0.5196	0.8660	120	51.96	100		
24	120	100	0.5196	0.8660	120	51.96	100		
25	120	100	0.5196	0.8660	120	51.96	100		
26	120	100	0.5196	0.8660	120	51.96	100		
27	120	100	0.5196	0.8660	120	51.96	100		
28	120	100	0.5196	0.8660	120	51.96	100		
29	120	100	0.5196	0.8660	120	51.96	100		
30	120	100	0.5196	0.8660	120	51.96	100		
31	120	100	0.5196	0.8660	120	51.96	100		
32	120	100	0.5196	0.8660	120	51.96	100		
33	120	100	0.5196	0.8660	120	51.96	100		
34	120	100	0.5196	0.8660	120	51.96	100		
35	120	100	0.5196	0.8660	120	51.96	100		
36	120	100	0.5196	0.8660	120	51.96	100		
37	120	100	0.5196	0.8660	120	51.96	100		
38	120	100	0.5196	0.8660	120	51.96	100		
39	120	100	0.5196	0.8660	120	51.96	100		
40	120	100	0.5196	0.8660	120	51.96	100		
41	120	100	0.5196	0.8660	120	51.96	100		
42	120	100	0.5196	0.8660	120	51.96	100		
43	120	100	0.5196	0.8660	120	51.96	100		
44	120	100	0.5196	0.8660	120	51.96	100		
45	120	100	0.5196	0.8660	120	51.96	100		
46	120	100	0.5196	0.8660	120	51.96	100		
47	120	100	0.5196	0.8660	120	51.96	100		
48	120	100	0.5196	0.8660	120	51.96	100		
49	120	100	0.5196	0.8660	120	51.96	100		
50	120	100	0.5196	0.8660	120	51.96	100		
51	120	100	0.5196	0.8660	120	51.96	100		
52	120	100	0.5196	0.8660	120	51.96	100		
53	120	100	0.5196	0.8660	120	51.96	100		
54	120	100	0.5196	0.8660	120	51.96	100		
55	120	100	0.5196	0.8660	120	51.96	100		
56	120	100	0.5196	0.8660	120	51.96	100		
57	120	100	0.5196	0.8660	120	51.96	100		
58	120	100	0.5196	0.8660	120	51.96	100		
59	120	100	0.5196	0.8660	120	51.96	100		
60	120	100	0.5196	0.8660	120	51.96	100		
61	120	100	0.5196	0.8660	120	51.96	100		
62	120	100	0.5196	0.8660	120	51.96	100		
63	120	100	0.5196	0.8660	120	51.96	100		
64	120	100	0.5196	0.8660	120	51.96	100		
65	120	100	0.5196	0.8660	120	51.96	100		
66	120	100	0.5196	0.8660	120	51.96	100		
67	120	100	0.5196	0.8660	120	51.96	100		
68	120	100	0.5196	0.8660	120	51.96	100		
69	120	100	0.5196	0.8660	120	51.96	100		
70	120	100	0.5196	0.8660	120	51.96	100		
71	120	100	0.5196	0.8660	120	51.96	100		
72	120	100	0.5196	0.8660	120	51.96	100		
73	120	100	0.5196	0.8660	120	51.96	100		
74	120	100	0.5196	0.8660	120	51.96	100		
75	120	100	0.5196	0.8660	120	51.96	100		
76	120	100	0.5196	0.8660	120	51.96	100		
77	120	100	0.5196	0.8660	120	51.96	100		
78	120	100	0.5196	0.8660	120	51.96	100		
79	120	100	0.5196	0.8660	120	51.96	100		
80	120	100	0.5196	0.8660	120	51.96	100		
81	120	100	0.5196	0.8660	120	51.96	100		
82	120	100	0.5196	0.8660	120	51.96	100		
83	120	100	0.5196	0.8660	120	51.96	100		
84	120	100	0.5196	0.8660	120	51.96	100		
85	120	100	0.5196	0.8660	120	51.96	100		
86	120	100	0.5196	0.8660	120	51.96	100		
87	120	100	0.5196	0.8660	120	51.96	100		
88	120	100	0.5196	0.8660	120	51.96	100		
89	120	100	0.5196	0.8660	120	51.96	100		
90	120	100	0.5196	0.8660	120	51.96	100		
91	120	100	0.5196	0.8660	120	51.96	100		
92	120	100	0.5196	0.8660	120	51.96	100		
93	120	100	0.5196	0.8660	120	51.96	100		
94	120	100	0.5196	0.8660	120	51.96	100		
95	120	100	0.5196	0.8660	120	51.96	100		
96	120	100	0.5196	0.8660	120	51.96	100		
97	120	100	0.5196	0.8660	120	51.96	100		
98	120	100	0.5196	0.8660	120	51.96	100		
99	120	100	0.5196	0.8660	120	51.96	100		
100	120	100	0.5196	0.8660	120	51.96	100		

$$\begin{array}{r} 100 \\ \times 0.5196 \\ \hline 51.96 \end{array}$$

$$\begin{array}{r} 100 \\ \times 0.8660 \\ \hline 86.60 \end{array}$$

counter 49580

(Signature)



19-660

STATE OF TEXAS  
COUNTY OF WILLACY

FIELD NOTES OF A SURVEY OF  
3,117.34 ACRES OF SUBMERGED LAND  
OUT OF SECTIONS 462, 463, 464, 465,  
468, 469, 470, 471, 472, 473, 474,  
481 AND 455, LAGUNA MADRE, WILLACY  
COUNTY, TEXAS, MADE FOR THE WILLACY  
COUNTY NAVIGATION DISTRICT FOR THE  
PURPOSE OF APPLYING FOR PATENT TO  
SAID LAND. SAID SURVEY BEING LOCA-  
TED ABOUT 23 MILES NORTHEAST OF  
RAYMONDVILLE, COUNTY SEAT OF WIL-  
LACY COUNTY.

BEGINNING AT A POINT ON THE DIVISION LINE BETWEEN SECTION 455,  
LAGUNA MADRE, AND THE SAN JUAN DE CARRICITOS GRANT, WILLACY COUNTY,  
TEXAS, N 80 09' 44" E, 186.15 VRS FROM U.S.C.&G.S. TRIANGULATION  
STATION "LEGION" FOR A POINT IN THE WEST LINE HEREOF. SAID POINT  
BEING ON THE MAINLAND ON THE WESTERN SHORE OF THE LAGUNA MADRE AT  
PORT MANSFIELD, TEXAS, AND BEING ON THE MEAN HIGH TIDE LINE OF THE  
LAGUNA MADRE AT THE INTERSECTION OF SAID LINE WITH THE EASTERLY  
PROLONGATION OF THE CENTER LINE OF FARM TO MARKET HIGHWAY No. 497.

THENCE, WITH THE LINE OF MEAN HIGH TIDE, ON THE DIVISION LINE BET-  
WEEN THE SAN JUAN DE CARRICITOS GRANT AND SECTION 455, LAGUNA MADRE,  
AS FOLLOWS: N 14 23' 14" W, 1440.0 VRS AND N 8 36' 57" E, 44.53 VRS  
TO THE POINT OF INTERSECTION OF SAID LINE WITH THE NORTH LINE OF THE  
WILLACY COUNTY NAVIGATION DISTRICT TRACT FOR THE NORTHWEST CORNER  
HEREOF. SAID POINT AND CORNER BEING LOCATED AT COORDINATES  
X846074.50 VRS AND Y118694.46 VRS ON THE TEXAS COORDINATE SYSTEM,  
SOUTH ZONE. WHENCE A CONCRETE MONUMENT MARKED NE COR NAVIG TRACT  
BEARS S 89 30' 30" W, 24.58 VRS.

THENCE, WITH THE EASTERLY PROLONGATION OF THE NORTH LINE OF THE  
NAVIGATION DISTRICT TRACT, N 89 30' 30" E, 357.64 VRS TO A POINT  
IN SECTION 455 FOR THE MOST NORTHERLY NORTHEAST CORNER HEREOF.  
COORDINATES FOR SAID CORNER BEING X846432.14 VRS AND Y118697.53 VRS.

THENCE, S 14 23' 14" E, 1028.78 VRS TO A POINT AND COORDINATES  
X846687.75 VRS AND Y117701.01 VRS FOR AN INSIDE CORNER HEREOF.

THENCE, PARALLEL TO AND 540 VRS NORTHERLY FROM THE CENTER LINE OF  
THE EXISTING CHANNEL TO PORT MANSFIELD AND THE PROPOSED EXTENSION  
OF SAID CHANNEL TO PADRE ISLAND AS NOW STAKED ON THE GROUND, N 87  
07' 12" E, AT 263.86 VRS CROSS THE WEST LINE OF SECTION 468, 184.51  
VRS FROM ITS NORTHWEST CORNER; AT 2166.25 VRS CROSS THE EAST LINE  
OF SECTION 468, 106.69 VRS FROM ITS NORTHEAST CORNER; AT 4068.66 VRS  
CROSS THE EAST LINE OF SECTION 469, 28.87 VRS FROM ITS NORTHEAST  
CORNER; AT 4774.42 VRS CROSS THE NORTH LINE OF SECTION 470; AT  
5971.05 VRS CROSS THE EAST LINE OF SECTION 465, 48.95 VRS NORTH  
OF ITS SOUTHEAST CORNER; AT 7873.44 VRS CROSS THE EAST LINE OF  
SECTION 464, 126.76 VRS FROM ITS SOUTHEAST CORNER; AT 9775.83 VRS  
CROSS THE EAST LINE OF SECTION 463, 204.57 VRS FROM ITS SOUTHEAST  
CORNER; AT 11678.22 VRS CROSS THE EAST LINE OF SECTION 462, 282.39  
VRS FROM ITS SOUTHEAST CORNER AND AT 12958.05 VRS A POINT ON THE  
WEST LINE OF SECTION 9, PADRE ISLAND, FOR THE NORTHEAST CORNER  
HEREOF. SAID POINT AND CORNER BEING LOCATED AT COORDINATES  
Y118352.06 VRS AND X859629.47 VRS WHENCE U.S.C. & G.S. TRIANGULA-  
TION STATION "JONES" ON PADRE ISLAND BEARS N 77 49' 06" E,  
2649.54 VRS.

RECEIVED

NOV 26 1956

GENERAL LAND OFFICE

counter 49581



THENCE, WITH THE LINE OF MEAN HIGH TIDE AND THE DIVISION LINE BETWEEN SECTION 9, PADRE ISLAND AND SECTION 474, LAGUNA MADRE AS FOLLOWS: S 19 52' 30" E, 564.66 VRS TO THE CENTER LINE OF PROPOSED CHANNEL FROM PORT MANSFIELD AS STAKED ON THE GROUND; S 19 52' 30" E, 219.84 VRS AND S 29 40' 30" E, 389.59 VRS TO A POINT FOR THE SOUTHEAST CORNER HEREOF. COORDINATES FOR SAID CORNER BEING X860089.07 AND Y117275.78 VRS.

THENCE, PARALLEL TO AND 558.0 VRS SOUTHERLY FROM THE CENTER LINE OF PROPOSED CHANNEL FROM PORT MANSFIELD, S 87 07' 12" W, AT 1729.71 VRS CROSS THE DIVISION LINE BETWEEN SECTIONS 473 AND 474, 816.53 VRS FROM THE NORTHEAST CORNER OF SECTION 473; AT 3632.1 VRS CROSS THE EAST LINE OF SECTION 472, 894.35 VRS FROM ITS NORTHEAST CORNER; AT 5534.49 VRS CROSS THE EAST LINE OF SECTION 471, 972.16 VRS FROM ITS NORTHEAST CORNER; AT 7436.88 VRS CROSS THE EAST LINE OF SECTION 470, 1049.98 VRS FROM ITS NORTHEAST CORNER; AND AT 8142.12 VRS THE POINT OF BEGINNING OF A CURVE TO THE LEFT AT COORDINATES X851957.18 VRS AND Y116866.71 VRS.

THENCE, WITH SAID CURVE ON A RADIUS OF 743.38 VRS, THROUGH AN ARC OF 34 DEGREES, 441.09 VRS TO THE END OF CURVE.

THENCE, S 53 07' 12" W, 302.83 VRS TO THE POINT OF BEGINNING OF A CURVE TO THE RIGHT.

THENCE, WITH SAID CURVE ON A RADIUS OF 1319.38 VRS, AT 595.79 VRS CROSS THE EAST LINE OF SECTION 469, 250.59 VRS FROM ITS SOUTHEAST CORNER AND AT 782.88 VRS THE END OF CURVE AND A TOTAL ARC OF 34 DEGREES. THE END OF CURVE BEING AT COORDINATES X850580.65 VRS AND Y116274.8 VRS.

THENCE, S 87 07' 12" W, AT 1716.39 VRS CROSS THE EAST LINE OF SECTION 468, 172.76 VRS FROM ITS SOUTHEAST CORNER AND AT 2820.98 VRS AND COORDINATES X847763.24 VRS AND Y116133.06 VRS A POINT FOR AN INSIDE CORNER HEREOF.

THENCE, S 5 17' 24" W, AT 128.25 VRS CROSS THE DIVISION LINE BETWEEN SECTIONS 468 AND 481, AND AT 723.16 VRS AND COORDINATES X847696.61 VRS AND Y115412.97 VRS A POINT IN SECTION 481 FOR A CORNER HEREOF.

THENCE, S 14 09' 26" W, 1015.9 VRS TO A POINT ON THE EASTERLY PROLONGATION OF THE SOUTH LINE OF THE WILLACY COUNTY NAVIGATION DISTRICT TRACT FOR THE MOST SOUTHERLY SOUTHEAST CORNER HEREOF. SAID CORNER BEING AT COORDINATES X847448.14 VRS AND Y114427.93 VRS.

THENCE, WITH SAID LINE, S 89 30' 18" W, 360.0 VRS TO A POINT ON THE MEAN HIGH TIDE LINE OF THE LAGUNA MADRE ON THE DIVISION LINE BETWEEN SECTION 481 AND THE SAN JUAN DE CARRICITOS GRANT FOR THE SOUTHWEST CORNER HEREOF. SAID POINT AND CORNER BEING AT COORDINATES X847088.15 VRS AND Y114424.82 VRS WHENCE A CONCRETE MONUMENT MARKED SE COR NAVIG TRACT BEARS S 89 30' 18" W, 43.87 VRS AND THE OLD REFERENCE MONUMENT TO U.S.C. & G.S. TRIANGULATION STATION SAUZ BEARS S 89 30' 18" W, 43.87 VRS AND N 13 57' 44" E, 126.0 VRS. THE COORDINATES FOR SAID REFERENCE MONUMENT BEING X847074.67 VRS. AND Y114546.72 VRS.

THENCE, FROM THE SOUTHWEST CORNER HEREOF, WITH THE MEAN HIGH TIDE LINE OF THE LAGUNA MADRE ON THE WEST LINE OF SECTIONS 481, 468 AND 465, AND THE EAST LINE OF THE SAN JUAN DE CARRICITOS GRANT AS FOLLOWS: N 11 22' 10" E, 338.97 VRS; N 6 09' 15" E, 96.25 VRS; N 18 59' 15" E, 93.27 VRS; N 25 57' 35" E, 162.64 VRS; N 16 06' 19" E, 187.84 VRS; N 7 05' 27" E, 143.23 VRS; N 15 33' 53" E, 157.18 VRS;

RECEIVED

NOV 26 1956

GENERAL LAND OFFICE



N 4 47' 10" E, 262.96 VRS; N 1 02' 12" W, 162.19 VRS; N 2 37' 19" E, 251.42 VRS; N 15 28' 34" E, 130.60 VRS; N 31 54' 59" E, 80.95 VRS; N 47 52' 51" E, 127.58 VRS; N 41 46' 31" W, 137.13 VRS; N 29 05' 12" W, 59.12 VRS; N 7 47' 07" E, 45.15 VRS; N 22 32' 26" E, 60.77 VRS; N 20 54' 58" W, 40.82 VRS; N 38 20' 47" W, 47.77 VRS; N 86 28' 41" W, 54.57 VRS; S 73 49' 29" W, 43.53 VRS; S 55 33' 18" W, 68.87 VRS; S 85 48' 07" W, 35.78 VRS; N 73 45' 37" W, 36.57 VRS; S 55 42' 08" W, 130.54 VRS; S 18 20' 27" W, 61.49 VRS; S 60 29' 17" W, 74.87 VRS; S 63 47' 35" W, 77.26 VRS; S 67 57' 54" W, 113.46 VRS; N 61 38' 06" W, 95.33 VRS; N 14 02' 44" W, 66.31 VRS; N 44 21' 04" W, 127.52 VRS; N 26 28' 22" W, 96.89 VRS; N 32 15' 12" W, 117.67 VRS; N 17 32' 42" W, 61.20 VRS; AND N 25 09' 29" W, ACROSS THE MOUTH OF THE TURNING BASIN AT PORT MANSFIELD, 274.68 VRS TO THE POINT OF BEGINNING. CONTAINING 3,117.34 ACRES OF SUBMERGED LAND, COMPRISING 156.13 ACRES IN SECTION 455, 288.11 ACRES IN SECTION 474, 81.99 ACRES IN SECTION 462, 55.79 ACRES IN SECTION 463, 29.58 ACRES IN SECTION 464, 5.18 ACRES IN SECTION 465, 494.84 ACRES IN SECTION 468, 545.80 ACRES IN SECTION 469, 418.07 ACRES IN SECTION 470, 340.48 ACRES IN SECTION 471, 314.27 ACRES IN SECTION 472, 288.07 ACRES IN SECTION 473, AND 99.05 ACRES IN SECTION 481.

SURVEYED IN OCTOBER, NOVEMBER AND DECEMBER 1954; JULY AND DECEMBER 1955, AND COMPLETED JUNE 6, 1956.


ALL BEARINGS AND DISTANCES ARE ON THE TEXAS COORDINATE SYSTEM, SOUTH ZONE.

PARTY NO. 1.....C. L. FABIAN, INST.  
ED COLEGIO  
E. DE LA GARZA, CHAIN CARRIERS

PARTY NO. 2.....JESUS GRACIA, INST.  
JULIAN GOMEZ  
LUPE GONZALEZ, CHAIN CARRIERS

PARTY NO. 3.....W. L. STRAIT, INST.  
E. MUNGUIA  
L. SALINAS, CHAIN CARRIERS

I, C. L. FABIAN, A LICENSED STATE LAND SURVEYOR, DO HEREBY CERTIFY THAT THE FOREGOING SURVEY WAS MADE BY ME ON THE GROUND AND ACCORDING TO LAW; THAT THE LIMITS, BOUNDARIES AND CORNERS, WITH THE MARKS, NATURAL AND ARTIFICIAL, ARE TRULY DESCRIBED IN THE FOREGOING FIELD NOTES JUST AS I FOUND THEM ON THE GROUND; AND THEY ARE RECORDED IN THE COUNTY SURVEYOR'S OFFICE OF WILLACY COUNTY, TEXAS; IN BOOK 1, PAGES 1-2 & 3, THIS 24TH DAY OF NOVEMBER, 1956.



C. L. FABIAN  
LICENSED STATE LAND SURVEYOR  
MC ALLEN, TEXAS

RECEIVED

NOV 26 1956

GENERAL LAND OFFICE

counter 49583



4

WILLACY CO. RHD. SK. NO 1  
IN THAT FOLDER

COPY OF FIELD NOTES.

SAN PAT S-3682.

ALL DAY OF NOVEMBER 1, 1900. SAN PAT S-3682.

TOY COMPANY, TEXAS; IN BOOK...  
AND THEY ARE RECORDED IN THE COUNTY SURVEYOR'S OFFICE  
RECORDING FIELD NOTES JUST AS I FOUND THEM ON THE  
THE MARKS, NATURAL AND ARTIFICIAL, ARE FULLY DESCRIBED  
ACCORDING TO LAW; THAT THE LIMITS, BOUNDARIES AND CORNERS,  
THAT THE FOREGOING RUNWAY WAS MADE BY ME ON THE GROUNDS  
RASHAN, A LICENSED STATE LAND SURVEYOR, DO HEREBY

*[Handwritten Signature]*

NO. 11101, TEXAS  
LICENSED STATE LAND SURVEYOR  
G. L. FABIAN

NOV 28 1900

RECEIVED

DEARING LAND OFFICE

counter 49584

South 1000

ALL BEARING AND DISTANCES ARE ON THE TEXAS COORDINATE SYSTEM,  
SURVEYED IN OCTOBER, NOVEMBER AND DECEMBER 1900; JULY AND DECEMBER  
1899, AND COMPLETED JUNE 8, 1900.

435, 500.05 ACRES IN SECTION 453, AND 59.00 ACRES IN SECTION 401.  
1100 420, 540.00 ACRES IN SECTION 401, 414.85 ACRES IN SECTION  
IN SECTION 403, 500.00 ACRES IN SECTION 409, 414.85 ACRES IN SECTION  
50.00 ACRES IN SECTION 404, 8.10 ACRES IN SECTION 409, 404.00 ACRES  
1100 404, 51.00 ACRES IN SECTION 404, 89.30 ACRES IN SECTION 409,  
LAND, COMPRISING 100.12 ACRES IN SECTION 402, 508.11 ACRES IN SEC-  
TO THE POINT OF BEGINNING. CONTAINING 2,115.00 ACRES OF SURVEYED  
ACROSS THE MOUTH OF THE RUNNING RIVER AT RIGHT ANGLES, 234.00 ACRES  
154 W. 115.00 ACRES; N 15 231 430 W. 21.50 ACRES; AND S 80 691 50 W.  
N 94 511 00 E. 153.00 ACRES; N 20 361 50 E. 94.00 ACRES; N 25 101  
110 40 ACRES; N 21 381 00 W. 99.50 ACRES; N 14 01 44 1/2 W. 60.21 ACRES  
104 W. 04 00 ACRES; S 93 301 50 E. 11.50 ACRES; S 55 511 50 E. 4  
S 80 421 00 W. 120.00 ACRES; S 19 301 50 E. 61.00 ACRES; S 60 801  
00 00 ACRES; S 80 401 00 W. 28.10 ACRES; N 22 401 50 W. 02.00 ACRES  
00 00 ACRES; S 80 401 00 W. 40 00 ACRES; S 80 501 10 W. 19 0  
001 41 W. 04 00 ACRES; N 40 00 ACRES; N 20 301 00 E. 45.00 ACRES; N 20  
104 W. 50 10 ACRES; N 2 401 00 ACRES; S 10 401 00 ACRES; N 20 00 10  
N 40 001 00 E. 153.00 ACRES; N 21 401 00 W. 153.15 ACRES; N 20 001  
501 40 ACRES; N 10 501 00 E. 120.00 ACRES; N 21 501 00 E. 50.00 ACRES  
N 4 001 100 E. 200.00 ACRES; N 1 001 154 W. 108.10 ACRES; N 8 201 100 E.



# Willacy County Navigation District.

2-660

GRANTEE \_\_\_\_\_ SUR. No. \_\_\_\_\_ BLK. \_\_\_\_\_ COUNTY Willacy STATE Texas  
 SURVEYED BY C. L. Fabian DATE \_\_\_\_\_ CALCULATED BY H. H. Ulbricht DATE 9/8/56

	COURSE	DISTANCE	COS	SINE	LATITUDES		DEPARTURES		D. M. D.	N. D. A.	S. D. A.
					N	S	E	W			
	587 07 12 W	28210	05024	99873		1417		28174	61970		
	55 17 24 W	7232	99573	09220		7201		667	23129		
	514 09 26 W	10159	96963	24458		9850		2485	29977		
	589 30 18 W	3600	00860	99995		31		3600	23897		
1	N 11 22 10 E	3390	98040	19714	3374			668	20960		
2	N 6 09 15 E	963	99420	10720	957			103	21731		
3	N 18 59 15 E	933	94559	32536	882			304	22138		
4	N 25 57 35 E	1626	89910	43774	1462			712	23154		
5	N 16 06 19 E	1878	96075	27740	1804			521	24387		
6	N 7 05 27 E	1432	99235	12344	1421			177	25085		
7	N 15 33 53 E	1572	96348	26832	1515			472	25684		
8	N 4 47 10 E	2630	99652	08344	2621			219	26325		
9	N 1 2 12 (E) W	1622	99984	01809	1622			29	26573		
10	N 2 37 19 E	2514	99895	04574	2511			115	26717		
11	N 15 28 34 E	1306	96374	26683	1259			348	27180		
12	N 31 54 59 E	810	84882	52869	688			428	27956		
13	N 47 52 51 E	1276	67067	74175	856			946	29330		
14	N 41 46 31 W	1371	74576	66621	1022				913	29363	
15	N 29 05 12 W	591	87388	48613	516			287	28163		
16	N 7 47 07 <del>E</del> W	452	99079	13546	448			61	27927		
17	N 22 32 26 E	608	92361	38334	562			233	28231		
18	N 20 54 58 W	408	93409	35700	381				146	28318	
19	N 38 20 47 W	478	78428	62042	375			297	29875		
20	N 86 28 41 W	546	06143	99811	34			544	27034		
21	S 73 49 29 W	435	27858	96041		121		418	26072		
22	S 55 33 18 W	689	56561	82467		390		568	25086		
23	S 85 48 07 W	358	07321	99731		26		357	24161		
24	N 73 45 37 W	366	27966	96011	102			351	23453		

counter 49585

C



P-660

GRANTEE \_\_\_\_\_ SUR. No. \_\_\_\_\_ BLK. \_\_\_\_\_ COUNTY \_\_\_\_\_ STATE \_\_\_\_\_  
 SURVEYED BY \_\_\_\_\_ DATE \_\_\_\_\_ CALCULATED BY \_\_\_\_\_ DATE \_\_\_\_\_

	COURSE	DISTANCE	COS	SINE	LATITUDES		DEPARTURES		D. M. D.	N. D. A.	S. D. A.
					N	S	E	W			
25	S 55 42 8 W	1305	.56250	.82612		735		1078	22024		
26	S 18 20 27 W	615	.94920	.31466		584		194	20752		
27	S 60 29 17 W	749	.49261	.87025		369		652	19906		
28	S 63 47 35 W	773	.44162	.89721		341		694	18560		
29	S 67 57 54 W	1135	.27566	.92696		476		1052	16814		
30	N 61 38 06 W	953	.47508	.87994	453			839	14923		
31	N 14 02 44 W	663	.97011	.24270	643			161	13973		
32	N 44 21 04 W	1275	.71507	.69905	912			891	12871		
33	N 26 28 22 W	969	.89514	.44578	867			432	11548		
34	N 32 15 12 W	1177	.84570	.53266	995			628	10488		
35	N 17 32 42 W	612	.95348	.30131	584			184	9676		
36	N 25 09 29 W	2747	.90513	.42512	2486			1168	8324		
	N 4 23 14 W	14400	.96865	.24848	13949			3578	3578		
	N 8 36 57 E	445	.98872	.14982	440		67		67		
	N 89 30 30 E	3576	.00858	.99995	.31		3576		3710		
	S 14 23 14 E	10288	.96865	.24848		9965	2556		9842		
	N 87 07 12 E	129581	.05024	.99873	6510		129416		141814		
	S 19 52 30 E	7845	.94044	.33997		2378	2667		273897		
	S 29 40 30 E	3896	.86899	.49508		3386	1929		278493		
	S 87 07 12 W	81421	.05024	.99873		4091		81318	199104		
1	S 88 15 W	1017	.03054	.99953		31		1017	116769		
2	S 87 15 W	500	.11754	.99307		59		500	115252		
3	S 75 45 W	500	.26615	.96923		123		485	114767		
4	S 69 30 W	500	.35021	.93667		175		472	113310		
5	S 65 45 W	500	.42657	.90446		213		452	112386		
6	S 60 45 W	500	.48862	.87250		244		436	111498		
7	S 54 W	500	.58425	.81157		292		410	110652		
8	S 52 0 W	500	.61566	.78801		308		394	109848		

counter 99586

C<sup>2</sup>







STATE  
DATE

COUNTY

B.L.S.

SUR. NO.

DATE

CALCULATED BY

DATE

SURVEYED BY

WILLACY CO RHD SH NO1

(5)

RECEIVED

IN FLAT FOLDER.

NOV 26 1956

S. PAT 8-3682

GENERAL LAND OFFICE

counter 49588