

Serial File No. 101

County Line ~~County~~
Andrews²³ Martin
Counties

Filed March 11th 1933

J. H. Walker, Comm.

S. O. Clark

File Clerk

Descriptive: Judgment Dist Court

Resolution Comm's Ct. Andrews Co.

" " " Martin Co.

Field Notes, Co. Line -
Plat

Abstracted in Vol. 56.

3/17/33

counter 79667

SUN

PLAT OF WEST LINE MARTIN COUNTY AND EAST LINE ANDREWS COUNTY TEXAS

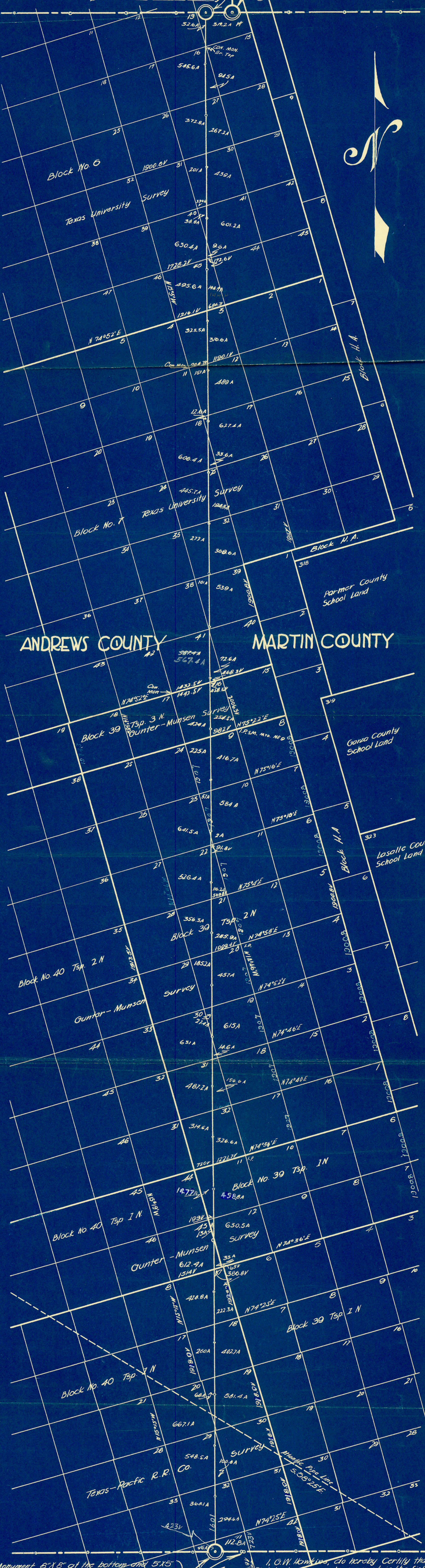
Scale - 1 in. = 1500 Yrs. - Surveyed Dec. 1932 - Jan. 1933
ALL COURSES HEREON REFER TO TRUE MERIDIAN

GAINES COUNTY

DAWSON COUNTY

The North end of this County Line is marked with a Concrete Monument 8"X8" at the bottom and 5"X5" at the top, being 42" long and set in the ground 22". On the East side is printed into the Concrete the word "Martin", on the West "Andrews", and on the North side "Gaines", and bears $W\frac{1}{2}$ Mi. from Old Standifer Corner.

Concrete Monument in which is embedded a 2 1/2 in. Galvanized Iron Pipe which is the SW Corner of Dawson and the SE corner of Gaines Counties, Texas, and is in the North Line of Martin County, Texas, and is known as the Old Standifer Corner.



Concrete Monument 8"X8" at the bottom and 5"X5" at top and 42" long set in ground 22". On W side is printed in Concrete the word Andrews, on the E side the word Martin, and on the south side the word "Midland". This monument bears $W\frac{1}{2}$ Mi. from point where the Estes corner was, as called for in judgment in establishing this line; also the 25 Mi. post in Midland Co. N. line bears E 104° 50' W, being rock mound and large spike in ground.

I, G. W. Hawkins, do hereby certify that this Plat truly represents my work in the field as ordered by the Honorable Courts of Andrews and Martin Counties, Texas.
Surveyed Dec. and Jan. 1932 and 1933.

G. W. Hawkins
Licensed Land Surveyor of Texas

TRACED & LETTERED BY H. H. KADERU

MIDLAND COUNTY

counter 99665

Sketch File No. 101

..... County

Filed March 11th 1933

J. H. Walker, Comm.

S. O. Clark
File Clerk

Descriptive: Resolution
Commissions Court
Andrews County

counter 79688

THE STATE OF TEXAS

COUNTY OF GAINES

I, Carroll Cobb, Clerk of the County and District Court of Gaines County, Texas, do hereby certify that the above and foregoing is a true and correct copy of a certain resolution passed by the Commissioners' Court of Andrews County, Texas, as same appears on file in my office in Cause No. 876, styled Andrews County vs. Martin County.

Given under my hand and seal of office on this the 7th day of March, A.D. 1933.

Carroll Cobb, County Clerk,
Gaines County, Texas.

By Anna B. Curry Deputy.

counter 49687

And be it further resolved that the costs of court in the litigation between said counties be paid jointly by said counties, each paying one-half thereof.

The foregoing resolution being presented to the court for consideration, its adoption was moved by commissioner H.H. Wooley, and seconded by Commissioner K.H. Irwin. A vote thereon being ordered the following Commissioners voted Aye W.L. White, K.H. Irwin, H.H. Wooley and M.A. Thornberry and the following No none.

ATTEST: Sam M. Smith, County Clerk

By: C.E. Sealy, Deputy.

(SEAL)

H.T. Wilson County Judge

THE STATE OF TEXAS

COUNTY OF ANDREWS

I, Sam M. Smith, Clerk of the County Court of Andrews County, Texas, do hereby certify that the foregoing is a true and correct copy of a Resolution, adopted by the Commissioners' Court of Andrews County, Texas, as the same appears of record in Vol. 2, pages 276-277 Minutes of Commissioners' Court of Andrews County, Texas.

IN TESTIMONY WHEREOF, Witness my hand and official seal of office at Andrews, Texas, this 12th day of December, A.D. 1932 at 5 o'clock P.M.

Sam M. Smith, County Clerk,
By C.E. Sealy, Deputy.

(SEAL)

counter 79686

Andrews Co. Bk. Case #1

a point on the Andrews-Gaines County boundary line one-half mile west of the Standifer corner, same being the recognized Southeast corner of Gaines County, Texas, and the Southwest corner of Dawson County, Texas, thence South to North boundary line of Midland County, Texas, intersecting such boundary line at a point one-half mile West of a monument on said North Midland County line established by Bryan Estes and marked Southwest corner of Martin County and Southeast corner of Andrews County. That aforesaid point of beginning on the Andrews-Gaines County line be established as the Northeast corner of Andrews County and the Northwest corner of Martin County. That the aforesaid point of intersection on the North Midland County line be established as the Southeast corner of Andrews County and the Southwest corner of Martin County.

Be it further resolved that a regular licensed land surveyor of the State of Texas, who is a competent surveyor be employed to survey the line as herein designated by and with the consent of both Martin and Andrews Counties, to survey said line and establish the same in accordance with the Statutory provisions of the State of Texas governing the establishment of county boundary lines, and that the compensation to such surveyor for establishing said line be paid by said counties, each paying one-half thereof, and that in the event said Martin and Andrews Counties through their duly qualified officials fail to reach an agreement as to the surveyor to do said work that each shall immediately certify to the District Court of Gaines County, Texas, each naming the surveyor desired by the respective counties, and that the District Judge of the said District Court of Gaines County, Texas, shall select from the two certified one man to conduct such survey and establish said line, and that the decision of the District Judge shall be final and binding upon each of said counties.

counter 49685

Andrews Co. Survey

STATE OF TEXAS RESOLUTION FOR SETTLEMENT OF
COUNTY OF ANDREWS ANDREWS-MARTIN COUNTY BOUNDARY LINE
IN THE COMMISSIONERS COURT OF ANDREWS COUNTY, TEXAS.

BE IT REMEMBERED, that on this the 12th day of December, A.D. 1932, there came to be held a regular term of said court, at the court house in Andrews, Andrews County, Texas, with the following members being present, to-wit: H.T. Wilson, County Judge, Presiding; W.L. White, Commissioner, Precinct No. 1, K.H. Irwin, Commissioner Precinct No. 3; H.H. Wooley, Commissioner, Precinct No. 3; M.A. Thornberry, Commissioner Precinct No. 4; G.E. Walden, Sheriff, C.E. Sealy, Deputy County Clerk.

After court was legally opened among other proceedings had was the following:

WHEREAS the boundary line between Andrews and Martin Counties, Texas is in dispute, and

WHEREAS, Andrews County, Texas, has filed suit in the District Court of Gaines County, Texas, to obtain judicial settlement of said disputed boundary line, and

WHEREAS, necessity exists for an early settlement of said dispute and settlement of said line by litigation will cause much delay in settlement and result in great expense to the parties concerned,

NOW, THEREFORE BE IT RESOLVED: that H.T. Wilson, County Judge of Andrews County, Texas, and Jesse R. Orth and G.W. Dunaway, attorneys for Andrews County, Texas, in aforesaid suit, be and are hereby authorized to enter into an agreed settlement and judgment in said suit establishing the boundary line between Andrews and Martin Counties. That such agreed line begin at

~~Sketch~~ File No. 101

County

Filed March 11th 1933

J. H. Walker, Comm.

S. C. Clark

File Clerk

Descriptive: Resolution

Commissions Court

Martin County

counter 79683

THE STATE OF TEXAS
COUNTY OF GAINES

I, Carroll Cobb, Clerk of the County and District Court of Gaines County, Texas, do hereby certify that the above and foregoing is a true and correct copy of a certain resolution passed by the Commissioners' Court of Martin County, Texas, as same appears on file in my office in Cause No. 876, styled Andrews County vs. Martin County.

Given under my hand and seal of office on this the 7th day of March, A.D. 1933.

Carroll Cobb, County Clerk,
Gaines County, Texas.

By Alma B. Curry Deputy.

respective counties, and that the District Judge of the said District Court of Gaines County, Texas, shall select from the two certified ~~one~~ one man to conduct such survey and establish said line, and that the decision of the District Judge shall be final and binding upon each of said counties.

And be it further resolved that the costs of court in the litigation between said counties be paid jointly by said counties each paying one-half thereof.

The foregoing resolution being presented to the court for consideration, its adoption was moved by Commissioner J.H. White Prec. No. 1, and seconded by Commissioner A.B. Brown, Prec. No. 4, a vote thereon being ordered the following commissioners votes Aye White, Henson, Collins and Brown, and the following No. None.

J.S. Lamar, County Judge

ATTEST:

Jno. F. Epley,
County Clerk.

THE STATE OF TEXAS

COUNTY OF MARTIN

I, Jno. F. Epley, County Clerk and ex officio clerk of the Commissioners Court do hereby certify that the above and foregoing two pages and this page contain a true and correct copy of the original resolution passed by the Honorable Commissioners Court of Martin County, Texas, at a regular session at the Court House thereof in Stanton, Martin County, Texas, said original resolution being on file in my office.

WITNESS my hand and official seal this the 13th day of December, A.D. 1932.

Jno. F. Epley, County Clerk,
and Ex-officio Clerk of the
Commissioners Court of Martin
County, Texas.

(SEAL)

counter 49681

Martin County, Texas, in aforesaid suit, be and are hereby authorized to enter into an agreed settlement and judgment in said suit establishing the boundary line between Andrews and Martin Counties. That such agreed line begin at a point on the Andrews-Gaines County Boundary line one half mile west of the Standifer Corner, same being the recognized southeast corner of Gaines County, Texas, and the Southwest corner of Dawson County, Texas. THENCE South to North boundary line of Midland County, Texas, intersecting such boundary line at a point one half mile West of a monument on said North Midland County line established by Bryan Estes and marked southwest corner of Martin County, and Southeast corner of Andrews County. That aforesaid point of beginning on the Andrews-Gaines County line be established as the Northeast corner of Andrews County and the Northwest corner of Martin County. That the aforesaid point of intersection on the North Midland County Line be established as the Southeast corner of Andrews County and the Southwest corner of Martin County.

Be it further resolved that a regular licensed land surveyor of the State of Texas, who is a competent surveyor, be employed to survey the line as herein designated by and with the consent of both Martin and Andrews Counties, to survey said line and establish the same in accordance with the Statutory provisions of the State of Texas governing the establishment of County boundary lines, and that the compensation to such surveyor for establishing said line be paid by said counties, each paying one half thereof, and that in the event said Martin and Andrews Counties through their duly qualified officials fail to reach an agreement as to the surveyor to do said work that each shall immediately certify to the District Court of Gaines

County, Texas, each naming the surveyor desired by the *counties 19680*

THE STATE OF TEXAS
COUNTY OF MARTIN

RESOLUTION FOR SETTLEMENT
OF ANDREWS-MARTIN COUNTY
BOUNDARY LINE

IN THE COMMISSIONER'S COURT OF MARTIN COUNTY, TEXAS

BE IT REMEMBERED, that on this the 12th day of December, A.D. 1932, there came to be held a regular term of said Court, at the court house in Stanton, Martin County, Texas, with the following members being present, to-wit: J.S. Lamar, County Judge, Presiding; J.H. White, Commissioner Precinct No. 1; W.M. Henson, Commissioner Precinct No. 2; F.C. Collins, Commissioner Precinct No. 3; A.B. Brown, Commissioner Precinct No. 4; Milt Yater, Sheriff, and Jno. F. Epley, County Clerk.

After Court was legally opened among other proceedings had was the following:

WHEREAS the boundary line between Andrews and Martin Counties, Texas, is in dispute, and

WHEREAS, Andrews County, Texas, has filed suit in the District Court of Gaines County, Texas, to obtain judicial settlement of said disputed boundary line, and

WHEREAS, a necessity exists for an early settlement of said dispute and settlement of said lien by litigation will cause much delay in settlement and result in great expense to the parties concerned.

NOW, THEREFORE, BE IT RESOLVED: That J.S. Lamar, County Judge of Martin County, Texas, and T.T. Garrard, and R.W. Hamilton attorneys for

counter 49679

~~State~~ File No. 101

Andrews County

Filed March 11th 1933

J. H. Walker, Comm.

S. C. Clark
File Clerk

Descriptive: Judgment
Dist. Court, Garvin Co.

counter 49678

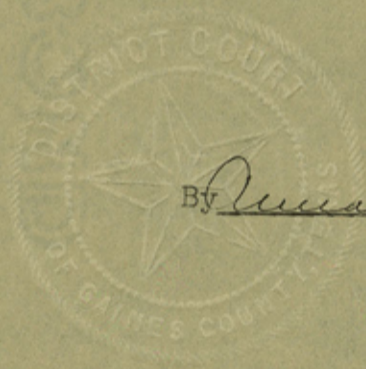
THE STATE OF TEXAS
COUNTY OF GAINES

I, Carroll Cobb, Clerk of the County and District Court in and for Gaines County, Texas, do hereby certify that the above and foregoing is a true and correct copy of Judgment in Cause No. 876, District Court of Gaines County, Texas, styled Andrews County vs. Martin County, as same appears on file in my office and on the Minutes of the District Court Volume 2, page 421.

Given under my hand and seal of office on this the 7th day of March, A.D. 1933.

and District
Carroll Cobb, County Clerk,
Gaines County, Texas.

By *Anna B. Curry* Deputy.



counter 49677

APPROVED:

G.W.Dunnaway
Jesse R.Orth,

Attorneys of Record
for Andrews County, Texas.

H.T.Wilson, County Judge
for Andrews County, Texas.

APPROVED:

R.W.Hamilton
Tom Garrard,

Attorneys of Record
for Martin County, Texas.

J.S.Lamar, County Judge
for Martin County, Texas.

counter 49676

Andrews Co. Texas. June #1

herein provided for and that each county shall pay one-half the court costs herein.

It is further ordered by the court that the surveyor selected herein to survey said line prepare a sketch for each of said counties showing the number of acres in each respective county of each section of land traversed by the county boundary line as herein established.

It is further ordered that a certified copy of this decree, together with a certified copy of the resolutions of the respective counties on file among the papers of this cause and a sketch made by the surveyor and certified to by him, together with his field notes of said survey, be charged up as court costs in this cause and forwarded by the clerk of this court to the General Land Office at Austin, Texas for record.

It is further ordered by the court that in the event said counties do not agree upon and select a surveyor agreeable to both counties within thirty days from this date, that they each certify such fact to this court naming the surveyor that is the choice of each and the price to be charged by such surveyor, and this court will determine which surveyor is to be selected and when so selected he shall be the official surveyor as provided for herein and begin as soon as possible to complete the surveying and establish said line as herein provided for.

Gordon B. McGuire, Judge Presiding

count 19675

court that the aforesaid point of beginning in the Andrews-Gaines County line be and the same is hereby established and decreed to be the Northeast corner of Andrews County and the Northwest corner of Martin County, Texas; that the aforesaid point of intersection on the North boundary line of Midland County is hereby established and decreed to be the Southeast corner of Andrews County and the Southwest corner of Martin County, Texas.

It is further ordered by the court that the said plaintiff, Andrews County, and the said defendant, Martin County, agree upon a competent, licensed land surveyor of the State of Texas to survey and establish said line as the county boundary line between said Andrews and Martin County, Texas, said agreement to be made within thirty days of the date hereof, and when such survey has been run and marked in accordance with the Statutes of the State of Texas, governing the marking of county boundary lines in this State, a copy of said field notes, setting forth the surveyor's marking of said line and duly certified to by him, be filed by such surveyor among the papers of this court and that a copy thereof be furnished to the county court of both the plaintiff and defendant. That when ~~such~~ surveyor's field notes have been properly filed as herein provided for among the papers of this cause, that the same shall become a part of this judgment and shall be spread upon the minutes of this court as a part of this decree.

It is further ordered, adjudged and decreed by the court that each county, to-wit, Andrews County and Martin County, shall each pay one-half the costs

of surveying said line and establishing the same as *counter 19674*

ANDREWS COUNTY

IN THE DISTRICT COURT

VS.

No. 876

OF GAINES COUNTY, TEXAS

MARTIN COUNTY

DECEMBER TERM, 1932

On this the 13th day of December, 1932, at a regular term of this court, the above numbered and entitled caused came on regularly for trial, and the parties appearing by their respective attorneys of record, and both parties announced in open court that the matters in controversy had all been agreed upon by the parties; and it appearing to the court that there is on file in the papers in this cause a certified copy of a resolution from the Commissioners Court of both the plaintiff, Andrews County, and the defendant, Martin County, acquiescing in and agreeing upon all questions of controversy growing out of or in any manner concerned with the subject matter of this litigation.

It is therefor ordered, adjudged and decreed by the court that the boundary line between the plaintiff, Andrews County, and the defendant, Martin County, is hereby decreed to be a line beginning at a point in the Andrews-Gaines County boundary line one-half mile West of the Standifer corner, same being the recognized Southeast corner of Gaines County, Texas, and the Southwest corner of Dawson County, Texas; thence South to the North boundary line of Midland County, Texas, and intersecting such Midland County North boundary line at a point one-half mile West of a monument on said North boundary line of said Midland County, Texas, established by Bryan Estes and marked the Southwest corner of Martin County and the Southeast corner of Andrews County.

It is further ordered, adjudged and decreed by the

counters 79673

~~Serial~~ File No. 101

Andrews County

Filed March 11th 1933

J. H. Walker, Comm.

S. C. Clark
File Clerk

Descriptive: Field notes of
the County line between
Andrews and Martin Counties -

{ See Judgment of Court
filed herewith }

Abstracted in
Vol. 56. 3/23/33.

 "

counter 49672

The Field Notes, herein, and the Corresponding Sketch, thereto are hereby approved and accepted by the Courts of Andrews and Martin Counties, Texas, as describing the dividing line between the two said counties.

Signed this the 6th day of March 1933.

W. G. Guthrie
County Judge, Andrews County, Texas.

Signed this the 4 day of March 1933.

J. D. Lamar
County Judge, Martin County, Texas.

THE STATE OF TEXAS |
COUNTY OF GAINES | I, Carroll Cobb, Clerk of the District Court
in and for Gaines County, Texas, do hereby certify that the above
and foregoing is a true and correct copy of the Field Notes and
Sketch made by George W. Hawkins, Surveyor establishing the boundary
line between Andrews and Martin Counties, and being a part of the judgment rendered in a certain suit styled Andrews County Vs. Martin County which is of record in the Minutes of the District Court Volume 2 page 421. Above Sketch and Field Notes appears of Record in the Minutes of District Court, Volume 2 page 447 et seq.

Witness my hand and the Seal of said Court, at office in Seminole, this the 6th day of March, A.D. 1933.

Carroll Cobb
Clerk District Court, Gaines County, Texas.

counter 49671

Surveys. 1900.8 Vrs. in all to a concrete monument which marks mile No. 24.

Mile 26. Thence S. at 1522.8 Vrs. cross S. line of Sect. 7 having divided it with 222.3 acres in Martin County and 428.7 acres in Andrews County. From this crossing point the S.E. cor. of 7 and the N.E. cor. of 18 brs. N.74°25'E. 914.8 Vrs. 1900.8 Vrs. in all to a concrete monument on section 18 marking Mile 26.

Mile 27. Thence S. at 1542.4 Vrs. cross S. line of Sect. 18 leaving it divided with 402.7 acres in Martin County and 260 acres in Andrews County. From this point of crossing the S.W. corner of 18 and the N.E. cor. of section 20 brs. S. 74°25' W. 497 Vrs. 1900.8 Vrs. in all to a concrete monument marking mile 27.

Mile 28. Thence S. at 852.8 Vrs. cross Atlantic pipe line which runs in course S.58°25'E. At 1297 Vrs. cross E. line of sect. 20, having passed through 19 dividing it with 581.4 acres in Martin County and 58.6 acres in Andrews County. At 1562 Vrs. cross S. line of section 20 having cut off 1.6 acres into Martin County, leaving 661.1 acres in Andrews County. From this crossing point the S.E. corner of 20 and the N.W. corner of 30 brs. N. 74°25' E. 70 Vrs. 1900.8 Vrs. in all to a concrete monument which marks mile 28.

Mile 29. Thence S. 1581.4 Vrs. cross S. line of section 29 from which point of crossing the N.W. corner of 31 and the N.E. corner of section 32 brs. N. 74°25' E. 598.2 Vrs. Having passed through 29 dividing it with 100 acres in Martin County and 546 in Andrews County. 1900.8 Vrs. in all to a concrete monument which marks mile 29.

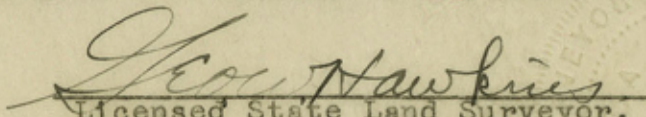
Mile 30. Thence S. at 1601 Vrs. cross S. line of section 32 at a point from which the S.E. corner of section 32 brs. N. 74°25'E. 1126.2 Vrs., also the N.E. cor. of 41 brs. do 1087.2 Vrs. and the S.W. cor. of 32 and the N.W. cor. of 41 brs. S. 74°25' W. 813.8 Vrs. Having passed through 32 the line divides it with 294.6 acres in Martin County and 368.1 acres in Andrews County. 2024 Vrs. in all to a concrete monument which marks the S. end of the line which divides Andrews and Martin Counties. Having passed through the Portion of section 41 which lies N. of Midland County, the line divides that portion with 112.8 acres in Martin County and 46 acres in Andrews County. From this S. end monument the 25th. mile post in the N. line of Midland County, a stone mound and large spike in the ground brs. E. 1048.6 Vrs. Also from this S. end monument a 4" Galv. pipe which was set by Bryan Estes as the S. end of the Martin-Andrews County line bore E. 950.4 Vrs. This pipe was removed and planted in a slanting position north of and touching the said S. end concrete monument.

Surveyed in Dec. and Jan. of 1932 and 1933.

Chain Carriers, John Lester Hawkins and Preston Kelley.

I, Geo. W. Hawkins, Licensed State Land Surveyor, do hereby certify that the above described survey and the corresponding sketch thereto, truly represent a survey which I did on the ground according to law, on the date and with the chain carriers aforesaid, duly qualified and that all corners, lines, boundaries and marks, whether natural or artificial are truly described in the foregoing field notes and plat as they are on the ground.

Witness my hand and seal at Stanton, Texas, this the 10th. day of February, 1933.


Licensed State Land Surveyor.

counter 49670

a concrete monument in Section 9 which marks Mile 15.

Mile 16. Thence at 416.8 Vrs. cross S. line of Section 9 leaving 9 divided with 416.7 acres in Martin County and 225 acres in Andrews County, from this point of crossing the S.W. corner of 9 and the N.W. corner of 10 brs. S. $75^{\circ} 16' E.$ 413.2 Vrs. 1900.8 Vrs. in all to concrete monument which marks Mile 16.

Mile 17. Thence S. at 137.3 Vrs. cross E. line of Section 23 having divided Section 10 leaving 584 acres in Martin County and 57 acres in Andrews County at 497.2 Vrs. cross S. line of Section 23, having cut off 2 acres out of 23 into Martin County, leaving 641.5 in Andrews County. From this point of crossing the S.E. corner of 23 and the N.E. corner of 22 brs. N. $75^{\circ} 10' E.$ 91.8 Vrs. 1900.8 Vrs. in all to concrete monument which marks Mile 17.

Mile 18. Thence S. at 577.8 Vrs. cross S. line of Section 22 having divided Section 22 with 116.2 acres in Martin County and 526 acres in Andrews County. From this crossing point the S.E. corner of 22 and the N.E. corner of 21 brs. N. $75^{\circ} 4' E.$ 596.8 Vrs. 1900.8 Vrs. in all to a concrete monument which marks Mile 18.

Mile 19. Thence S. at 658.3 Vrs. cross S. line of Section 21 having divided it with 285.9 acres in ~~Andrews County~~ Martin County and 356.3 acres in Andrews County. From this crossing point an I.P. & S.M. Mkd. S.W. 12-39-2N. brs. N. $74^{\circ} 58' E.$ 1099.4 Vrs. 1900.8 Vrs. in all to a concrete monument in Section 20, marking Mile 19.

Mile 20. Thence S. at 738.8 Vrs. cross S. line of Section 20 leaving Section 20 divided 457 acres in Martin County and 185.2 acres in Andrews County. From this crossing point the S.W. corner of 20 and the N.W. corner of 19 brs. S. $74^{\circ} 52' E.$ 295 Vrs. 1900.8 Vrs in all to a point in the E. line of Section 30 where a concrete monument marks the 20th Mile. Having passed through the N.W. corner of 19 leaving 615 acres in Martin County and 27.4 acres in Andrews.

Mile 21. Thence S. at 819.3 Vrs. cross S. line of Section 30 having divided it with 14.6 acres in Martin County, and 631 acres in Andrews County. From this point the S.E. corner of 30 and the N.E. corner of 31 brs. N. $74^{\circ} 46' E.$ 210 Vrs. 1900.8 Vrs. in all to a concrete monument which marks Mile 21.

Mile 22. Thence S. at 899.8 Vrs. cross S. line of Section 31 leaving it divided 156.6 Acres in Martin County, and 487.2 acres in Andrews County. From crossing point the S.E. corner of 31 and N.E. corner of 32 brs. N. $74^{\circ} 40' E.$ 715 Vrs. 1900.8 Vrs. in all to a concrete monument marking Mile 22.

Mile 23. Thence S. at 980.3 Vrs. cross S. line of Block 39 Tsp. 2-North, and the N. line of Block 39, Tsp. 1 North, Gunter, Munson & Anderson Bros. Surveys in Martin and Andrews Counties, and the S. line of Section 32, having divided it with 326.6 acres in Martin County and 314.6 acres in Andrews County. From this crossing point a $1\frac{1}{2}$ " galvanized pipe brs. N. $74^{\circ} 36' E.$ 1221.7 Vrs. being the N.E. corner of Section 11 and the N.W. corner of Section 10, each in Blk. 39, Tsp. 1 North, Gunter, Munson & Anderson Bros. Surveys. 1900.8 Vrs. in all to a concrete monument marking Mile 23.

Mile 24. Thence S. at 1054.7 Vrs. cross S. line of Section 11 having divided it so that 498.8 acres lies in Martin County and 147.7 acres, in Andrews County. From this crossing point a $1\frac{1}{2}$ " galvanized pipe brs. S. $74^{\circ} 36' W.$ 158.3 Vrs. Mkd. M.F.S.N.E. 43-B40-T^{147.7}N, at 11807⁷ cross E. line of Section 43 which is the W. line of Block 39 and the E. line of Block 40 of the Gunter, Munson & Anderson Bros. Surveys in Martin County and Andrews County. Between 11 and 43 the N.W. corner of Section 12 was cross dividing it 833.8 acres to Martin and 12.7 acres to Andrews. 1900.8 Vrs. in all to a concrete monument which marks Mile 24.

Mile 25. Thence S. at 1176.3 Vrs. cross S. line of Section 43 leaving it divided 33 acres to Martin and 612.4 acres to Andrews Counties. From this crossing point a $1\frac{1}{2}$ " I.P. and a $1\frac{1}{2}$ " Galv. pipe Mkd. N.E.7-B.40-I.N. brs. N. $74^{\circ} 36' E.$ 366.2 Vrs. being the N.E. corner of Section 7 and the N.E. corner of Block 40 of the T. & P. Ry. Co. Surveys in Martin and Andrews Counties. Also from this crossing point another $1\frac{1}{2}$ " I.P. & $1\frac{1}{2}$ " Galv. pipe Mkd. M.F.S.N.E.8-B.40-TIN. brs. S. $74^{\circ} 36' W.$ 1549.8 Vrs. being the N.E. corner of Section 8, Block 40, Tsp. 1 North, T. & P. Ry. Co.

counter 49669

acres in Andrews County. From this crossing point of the S. line of sect. 40² the N.E. Cor. of Sect. 45 and the S.E. Cor. of Sect. 40 brs N. 74°52' E. 174.6 Vrs. 1900.8 Vrs. in all to a concrete Monument marking mile 5.

Mile No. 6. Thence S. at 1600.8 Vrs. cross S. line of Blk. No. 6, of the University Land which is the N. Line of Blk. No. 7 of University Land being also the S. line of Sect. No. 45, of Blk. No. 6, having divided Sect.,⁴⁵ with 144⁴ acres in Martin County and 485.6 acres in Andrews County. From this crossing point the N.E. Cor. of Sect. No. 3, Blk. No. 7, and the S.E. Cor. of Sect. No. 45, Blk. 6, Brs. N. 74°52' E. 684.7 Vrs. 1900.8 Vrs. in all th a Concrete Monument which marks mile No. 6.

Mile No. 7. Thence S. at 1668.6 Vrs. cross S. line of Sect. No. 3 having divided Sect. 3 with 316.6 acres in Martin County and 325.5 acres in Andrews County. From this crossing point a concrete monument with bronze top imbedded bears S. 74°52' W. 704.7 Vrs. On the bronze top is stamped B-7-4-3-II-12-UT. and is the S.E. Cor. of Sect. No. 4; the S.W. Cor. of Sect. 3; the N.E. Cor. of Sect. II and the N.W. Cor. of Sect. 12, all of blk. 7 of the Texas University Surveys. 1900.8 Vrs. in all to Con. Mon. marking mile 7.

Mile No. 8. Thence S. at 1745.4 Vrs. cross S. line of Sect. 12. Having divided 12 with 489 acres in Martin County and 151 acres in Andrews County. From this point of crossing the S.W. Cor. of 12 and the N.W. Cor. of 17 brs. S. 74°52' W. 191.7 Vrs. 1900.8 Vrs. in all to a concrete monument marking mile 8.
590.8

Mile No. 9. Thence S. at 1900.8 Vrs. cross E. line of Sect. 18, having passed through the N.W. part of Sect. 17 dividing it with 627.4 acres in Martin County and 12.4 acres in Andrews Co. At 1803.4 Vrs. cross S. line of Sect. 18, having divided it with 33.1 acres in Martin Co. and 606.4 acres in Andrews Co. From this point of crossing the S.E. cor. of Sect. 18 and the N.E. Cor. of sect. 25, brs. N. 74°52' E. 320.5 Vrs. 1900.8 Vrs in all to concrete monument marking mile No. 9.

Mile No. 10. Thence S. at 1881 Vrs. cross S. line of Sect. 25 having divided it with 194.3 acres in Martin County and 445.7 acres in Andrews Co. From this point of crossing the S.W. Cor. of Sect. 25 and the N.W. Cor. of Sect. 32 brs S. 74°52' W. 1068.2 Vrs. 1900.8 Vrs. in all to Con. Mon. marking mile 10.

Mile 11. Thence S. 1900.8 Vrs. to a concrete monument marking mile 11, thus having two County line mile posts planted in Sect. 32.

Mile No. 12. Thence S. at 59.1 Vrs. cross the S. line of Sect. 32, having divided it with 368.6 acres in Martin Co. and 373 acres in Andrews Co. 1900.8 Vrs. in all to a concrete monument near the S.W. Cor of 39 marking Mile 12.

2

Mile 13. Thence S. at 126.9 Vrs. cross S. line of Sect. 39 having divided it with 539 acres in Martin Co. and 101 acres in Andrews Co. From this point of crossing the S.W. Cor. of Sect. 39 and the N.E. Cor. of Sect. 41 Brs. S. 74°52' W. 43.9 Vrs. At 285.5 Vrs. cross E. line of Sect. 41, cutting off only 37 acres of sect. 40 into Andrews Co. 1900.8 Vrs. in all to a concrete Monument marking mile 13.

Mile 14. Thence S. at 203.3 Vrs. cross S. line of U.T. Blk. 7 and the N. line of Blk. 39, Tsp. 3 N. of the Gunter-Munson & Anderson Surveys in Andrews and Martin Counties, also the S. line of Sect. 41 of the University Surveys, having divided Sect. 41 with 72.6 acres in Martin Co. and 567.4 acres in Andrews Co. From this crossing point a bronze topped con. mon. brs. S. 74°52' W. 1432.5 Vrs. Mkd. B-7-41-42-UT., and is the S.W. Cor. of Sect. 41 and the S.E. Cor. of Sect. 42, of the U.T. surveys. 1900.8 Vrs in all to a concrete monument in Sect. 16, Blk. 39, Tsp. 3 N. G.M. & A. Surveys marking mile 14.

Mile. No. 15. Thence S. at 336.3 Vrs. cross S. line of Sect. 16 which is also the S. line of Blk. 39, Tsp. 3N. and the N. line of Blk. 39, Tsp. 2 N. of the G. M. & A. surveys having divided Sect. 16 with 254.5 acres in Martin Co. and 424.0 acres in Andrews Co. From this point of crossing a 2" Galv. Pipe and St. Md. N.E. 9-B39-T2N. Brs. N. 75°22' E. 982 Vrs. being the N.E. Cor. of Sect. 9, Blk. 39, Tsp. 2 N. 1900.8 Vrs. in all to a concrete monument in Sect 9

11280

THE STATE OF TEXAS

Counties of

ANDREWS AND MARTIN

Field notes of a survey of the dividing line between Andrews County and Martin County.

Pursuant to an order of the Honorable Courts of Andrews and Martin Counties, I, Geo. W. Hawkins, a licensed Land Surveyor of the State of Texas, having been employed by the said County Courts as Special Surveyor to survey and mark the dividing line between the 2 counties and to prepare field notes and sketch of the survey showing each section of land traversed and how the county line divides its acreage between the two counties, do hereby submit the following Field Notes.

FIELD NOTES

In this survey the beginning point and the end of each mile there after is marked with a concrete monument 8"x8" at the bottom and 5"x5" at the top being 42" long and set in the ground 22". On each monument is printed into the concrete the word Martin on the East side and the word Andrews on the West side.

Beginning at a point in the S boundary line of Gaines County, from which a concrete monument in which is imbedded a 2 $\frac{1}{2}$ " galvanized pipe, bears E 950.4 vrs., being the S.W. corner of Dawson County and the S.E. corner of Gaines County and in the N. boundary line of Martin County, and is known as the Sandifer corner.

The beginning point is situated in Survey No. 14, Blk. No. 6 of the University of Texas surveys.

Mile 1, Thence S. at 1168.1 Vrs. cross E line of Sect. 13, having divided 14 with 319.2 acres in Martin County, and 32.6 A. in Andrews County, the balance of 287.8 acres being in Gaines County, at 1262.1 Vrs. cross S. line of Sect. 13, having cut only .2 of an acre off to Martin County. From this crossing point a concrete monument bears N. 74° 52' E. 24.7 Vrs., having imbedded in its top a bronze plate marked B-6-13-14-16-15-U.T., being the S.^{#E} corner of survey No. 13, S.^{#W} corner of survey 14; N.E. corner of Survey 16, and the N.W. corner of Survey 15, Blk. 6, of the University land. 1900.8 Vrs. in all to a point in survey 16 where a concrete monument marks Mile No. 1.

Mile No. 2. Thence S. at 1329.6 Vrs. cross S. line of Sect. 16, at a point from which the S. E. Corner of Sect. 16 and N. E. corner of Sect. 27, U.T., 6 brs. N. 74° 52' E. 536.9 Vrs. dividing Survey 16 with 94.5 acres in Martin County, and 545.5 acres in Andrews County, 1900.8 Vrs. in all to concrete monument marking Mile No. 2.

Mile No. 3. Thence S. at 1397.4 Vrs. cross S. line of Section No. 27, having divided it into 267.6 acres in Martin County and 372.8 acres in Andrews County, from this point of crossing the S. line of Section 27 the N.W. corner of Section 30 and the S.W. corner of Section 27, brs. S. 74° 52' W. 851.7 ^{Vrs} 1900.8 Vrs. in all to concrete monument marking Mile No. 3.

Mile No. 4. Thence S. at 1465.2 Vrs. cross S. line of Section 30 having divided it into 439 acres in Martin County, and 201 acres in Andrews County, From this crossing point the N.W. corner of Section 41 and the S.W. corner of Section 30 brs. S. 74° 52' W. 339.6 Vrs. 1900.8 Vrs. in all to a concrete monument which marks Mile No. 4.

Mile No. 5. Thence S. at 872 Vrs. cross W. line of Section 41 into Section 40 having divided Section 41, leaving 601.2 acres in Martin County and 38.8 acres in Andrews County, at 1533 Vrs. cross S. line of Section 40 having divided it with 95.6 acres in Martin County and 630.4

STATE OF TEXAS.

COUNTIES OF ANDREWS AND MARTIN, TEXAS.

FIELD NOTES SHOWING THE MARKING OF THE DIVIDING
LINE BETWEEN ANDREWS AND MARTIN COUNTIES, TEXAS.

counter 79666

Andrews Co.
Entry line
Sketch File No. 1871
Andrews County
Filed March 11th 1933
J. H. Walker, Comm.
S. Clark File Clerk
Descriptive: Plat attached to
the field notes of Andrews-Mitch-
am County line

PLAT
50
WEST LINE MADISON COUNTY
AND
EAST LINE MADISON COUNTY
TEXAS

See file 1500 for survey Dec 1927-1928
All corners shown refer to true meridian

DAWSON COUNTY GAINES COUNTY

counter 19689

MADISON COUNTY MADISON COUNTY

MIDLAND COUNTY