

*hand offic*

SURVEYORS REPORT  
OF  
A PORTION OF THE SOUTH LINE OF ANDREWS CO.  
AND  
A PORTION OF THE NORTH LINE OF WINKLER CO.  
\*\*\*\*\*  
IN ACCORDANCE WITH AN ORDER  
FROM THE COUNTY COURT OF AN-  
DREWS COUNTY TEXAS.  
FEBRUARY 9 TH. 1931  
\*\*\*\*\*

*counter 49709*



THE STATE OF TEXAS  
COUNTIES OF  
ANDREWS AND WINKLER

FIELD NOTES of a Survey of the County Line between the Counties of Andrews and Winkler made by authority of, and in accordance with an order from the County Court of Andrews County on the 9 th. day of February 1931. and notice filed with the County Court of Winkler County by the County Court of Andrews County as provided by Law. Both of said Counties concurring in and abiding by the result of said survey,.

Said survey is for the purpose of establishing a portion of the South line of Andrews County coincident and co-extensive with a portion of the North Line of Winkler County, and as provided by an act of the 15 th. Legislature of Texas, dividing Young and Bexar Territories into Counties and defining the boundaries thereof. Begun and held at the City of Austin, Texas, April 18 th 1876.

MAGNETIC VARIATION  
N.E. Cor. Winkler Co.  $10^{\circ}50'E$   
S.W. Cor. Andrews Co.  $10^{\circ}50'E$

Direction of line determined by observation on Polaris in Western elongation.  
Azimuth Angle  $1^{\circ}15'30''$

Beginning at a large flat rock marked N.W.E. Co. identified as the N.W. Corner of Ector County placed by C.B. Collard and approved by the Land office. Said corner re-constructed and enlarged by the addition of an inch and one half iron pipe marked N.W. Ector Co. and N.E. Winkler Co. set in cement, from whence Blue mtn. Brs. S  $36^{\circ}13'W$ . Sand Dune Brs. N.  $31^{\circ}13'W$  and a Wind mill Brs. N.  $19^{\circ}55'E$ .

Thence West at 742.5 vrs. cross the North line of section No 5. Block 45 Tsp. No. 2. North, 1900.8 vrs in all to 1 1/2 inch iron pipe marked S.L.A. W. 2. N.L.W. for mile No. 1 west.

Thence West 1900.8 vrs. to 1 1/4 inch iron pipe marked S.L.A. W. 3. N.L.W. in deep Sand for Mile No. 2 west.

Thence West 1900.8 vrs. to a 1 1/4 inch iron pipe marked S.L.A. W. 4. N.L.W. in deep sand for mile No. 3 west.

Thence West 1900.8 vrs to a 1 1/4 inch iron pipe marked S.L.A. W 5 N.L.W. in deep sand for mile No 4 west.

Thence West 1900.8 vrs to a 1 1/4 inch iron pipe marked S.L.A. W6 N.L.W. in deep sand for mile No. 5 west.

Thence West 1900.8 vrs to 1 1/4 inch iron pipe marked S.L.A. W. 7 N.L.W. in firm mesquit flat for mile No. 6 west

Thence West 1900.8 vrs to 3 inch iron pipe marked S.L.A. from whence west point blue mtn. brs. S.  $17^{\circ}44'E$ . wind mill brs N.  $41^{\circ}04'E$  Wind mill brs. S.  $42^{\circ}40'E$ . for mile No. 7 west

Thence west at 1565.6 vrs pass 39.5 vrs South of 1 1/2 inch iron pipe marked S.E. 31 B.A. 54. 1900.8 vrs in all to a 1 1/4 inch iron pipe marked S.L.A. W 9. N.L.W. for mile No. 8 west

Thence west 1900.8 vrs to a 1 1/4 inch iron pipe marked S.L.A. W 10. N.L.W. in Mesqt, sand flat for mile No. 9 west.

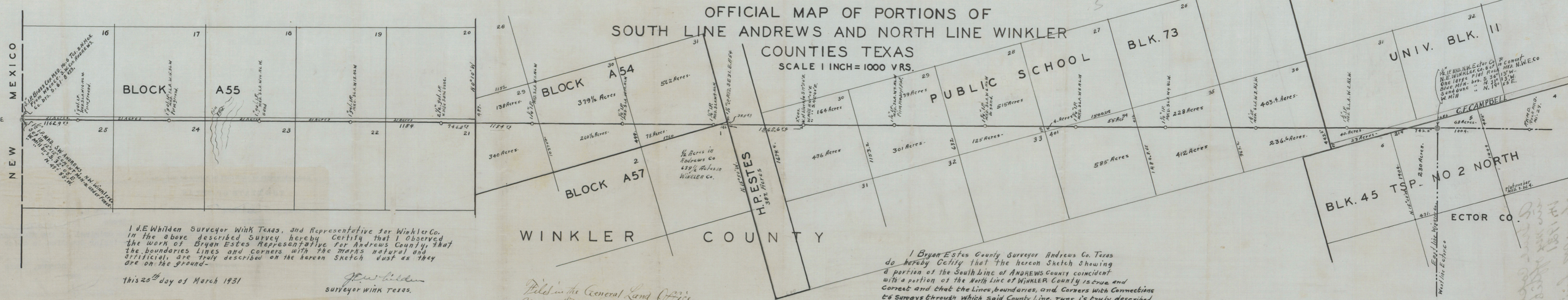
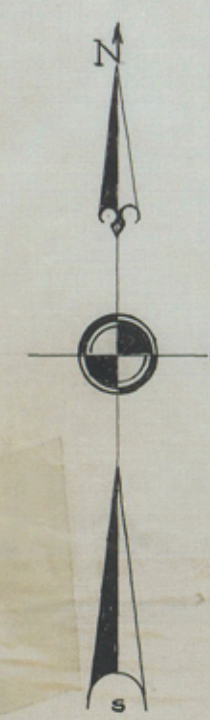
Thence West at 600 vrs. cross road 1900.8 in all to 1 1/4 inch iron pipe marked S.L.A. W11. N.L.W. in deep sand for mile No. 10 west.

counter 49710

1  
E



22



OFFICIAL MAP OF PORTIONS OF  
SOUTH LINE ANDREWS AND NORTH LINE WINKLER  
COUNTIES TEXAS  
SCALE 1 INCH = 1000 VRS.

I J. E. Whilden Surveyor Wink Texas, and Representative for Winkler Co. in the above described Survey hereby Certify that I observed the work of Bryan Estes Representative for Andrews County, that the boundaries Lines and corners with the marks natural and artificial, are truly described on the hereon Sketch just as they are on the ground.  
This 25<sup>th</sup> day of March 1931  
J. E. Whilden  
surveyor WINK TEXAS.

Filed in the General Land Office,  
May 29<sup>th</sup> 1931, 50  
J. H. Walker, Comr,  
County Clerk -

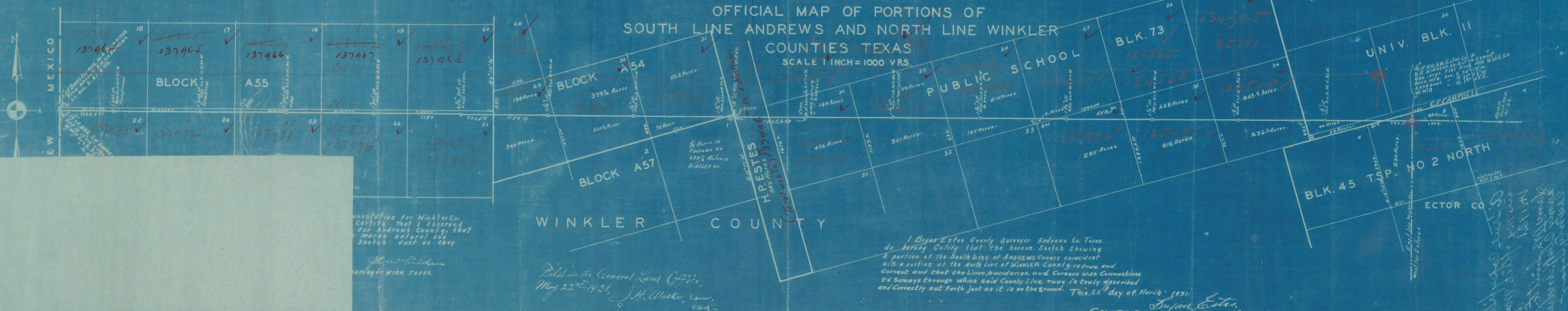
I Bryan Estes County Surveyor Andrews Co. Texas do hereby Certify that the hereon Sketch showing a portion of the South Line of ANDREWS County coincident with a portion of the North Line of WINKLER County is true and correct and that the Lines, boundaries, and Corners with Connections to Surveys through which said County Line runs is truly described and correctly set forth just as it is on the ground. This 25<sup>th</sup> day of March 1931.

Bryan Estes,  
COUNTY SURVEYOR, ANDREWS COUNTY TEXAS.

counter 49715

*[Handwritten notes and signatures in the bottom right corner, including a large signature and the number 1.00.]*





OFFICIAL MAP OF PORTIONS OF  
SOUTH LINE ANDREWS AND NORTH LINE WINKLER  
COUNTIES, TEXAS

SCALE 1 INCH = 1000 FTS.

WINKLER COUNTY

representative for Winkler Co.  
Certify that I observed  
for Andrews County, that  
marks natural and  
Sketch just as they

*W. H. Walker*  
Surveyor Winkler Texas.

Filed in the General Land Office,  
May 22<sup>nd</sup> 1931. J. H. Walker, Comr.,  
Clark

I Bryan Estes County Surveyor Andrews Co. Texas  
do hereby Certify that the hereon Sketch showing  
a portion of the South Line of ANDREWS County coincident  
with a portion of the North Line of WINKLER County is true and  
Correct and that the Lines, boundaries, and Corners with Connections  
to Surveys through which said County Line, runs is truly described  
and Correctly set forth just as it is on the ground. This 25<sup>th</sup> day of March - 1931.

*Bryan Estes*  
COUNTY SURVEYOR, ANDREWS COUNTY TEXAS.

county 99714



ANDREWS-WINKLER, 20  
Boundary Line

(9)

Filed May 29<sup>th</sup> 1931

J. H. Walker, Court  
Clerk

counter 79713

Re 15'

FILED FOR RECORD

This 14 day of May 1931

At \_\_\_\_\_ o'clock \_\_\_\_\_ M.

Sam M. Smith  
COUNTY CLERK, ANDREWS COUNTY, TEXAS



45 T.2.N      5      Acres in Andrews      68 ✓      Acres in Winkler      230 ✓

C.F.Campbell Strip      23 acres in Winkler Co. balance in Andrews.

Block	Section	Acres in Andrews	Acres in Winkler
11 Univ	31	400	40

Block	Section	Acres in Andrews	Acres In Winkler
73.P.S.	36	403.4 ✓	236.6 ✓
	35	228 ✓	412 ✓
	34	55 ✓	585 ✓
	27	636 ✓	4 ✓
	28	515 ✓	125 ✓
	29	339 ✓	301 ✓
	30	164 ✓	476 ✓

H.P.ESTES STRIP.      387 Acres in Winkler Co balance in AndrewsCo

Block A-57	sec. 1.	1/2 acre in Andrews Co and 639 1/2 in Winkler
Block A54	Section	Acres in Andrews      Acres in Winkler
	31	562 ✓      78 ✓
	30	379.1/2 ✓      260.1/2 ✓
	29	138 ✓      340 ✓

Block	Section	Acres in Andrews	Acres in Winkler
A-55	21	21 ✓	619 ✓
	22	21 ✓	619 ✓
	23	21 ✓	619 ✓
	24	21 ✓	619 ✓
	25	21 ✓	619 - (616 a ✓ F. 137973)

I hereby certify that the above list showing Agerage in each County of each Survey through which the County Line passes is true and correct.

*Loyal Estes*  
County Surveyor Andrews County Texas.

E 503—Certificate of True Copy of Papers Recorded—Class 1

TEXAS STANDARD FORM

THE STATE OF TEXAS, }  
 COUNTY OF Andrews } I, Sam M. Smith Clerk  
 of the County Court of Andrews County, Texas, do hereby certify that  
 the foregoing ~~are the original field notes and which~~ are the original field notes and which  
 a true copy was filed in my office on the 14th day of May, 1931  
 as the same appears of record in my office in Book 1 Page s 113 to 117 both inclusive  
 GIVEN UNDER MY HAND, and the seal of said Court, at office in Andrews, Texas  
 this 26th day of May 1931

*Sam M. Smith* Clerk.  
 By \_\_\_\_\_ Deputy.

Counter 49712

3  
E



Thence West at 115~~4~~ vrs cross fence on the East line of section 21 block A 55. 1900.8 vrs in all to 2 1/2 inch ironpipe in west side sand dune. for mile No.11 West.

Thence West 1900.8 vrs to 1 inch gal.ironpipe in sand marked S.L.A.W31 N.L.W. for mile No.12 west .

Thence West 1900.8 vrs to a 1 inchiron pipe marked S.L.A. W 14 N.L.W. in sand for mile No.13 west .

Thence west at 950 vrs enter hard ground 1900.8 vrs in all to 1 inch iron pipe marked S.L.A. w 15 N.L.W. for mile No. 14 west.

Thence West 1900.8 vrs to a 1 inch iron pipe marked SLA. W5 N.L.W. in hard ground for mile No.15 west.

Thence West 1162.9 vrs to 1 1/2 inch iron pipe maked S.W. Andrews Co. N.W.Winkler Co. set in 12"x 12" cement monument and under fence . A 3 "iron pipe with brass cap marked Mi.6 Texas and New Mex. Brs.N. 61.8 vrs.  
A wind mill brs. S 32°03'E ADO. N.49°55'W.

Surveyed March 1 st to 6 th.1931

Chain Carriers ----- ( A.B.Estes  
( Walter Estes

I Bryan Estes County Surveyor Andrews County Texas hereby certify that the foregoing described Survey was made by me on the ground and according to Law ,that the lines boundaries and corners with the marks,natural and artificial,are truly described in the foregoing Field Notes just as they are on the ground.

This 25<sup>th</sup> day of March 1931

*Bryan Estes*  
County Surveyor of Andrews County  
and representative for Andrews  
County in this Survey.

I, *J.E. Winkler* Surveyor Wink Winkler County Texas and representative for Winkler County in the above described Survey,hereby certify that I observed the work of Bryan Estes Representative for Andrews County,that the boundaries lines and corners with the marks natural and artificial,are truly described in the foregoing Field Notes just as they are on the ground.

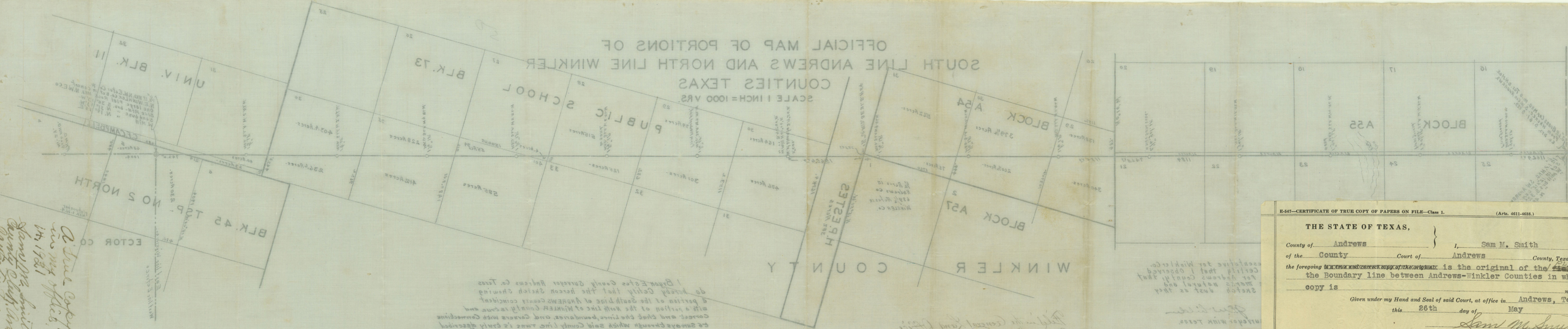
This 25<sup>th</sup> day of March 1931

*J.E. Winkler*  
Surveyor, Wink Winkler County Texas.



OFFICIAL MAP OF PORTIONS OF  
COUNTIES TEXAS  
SOUTH LINE ANDREWS AND NORTH LINE WINKLER

SCALE 1 INCH = 1000 YDS.



1. By an Estes County Surveyor Andrews Co. Texas do hereby certify that the heron sketch showing a portion of the south line of Andrews County coincident with a portion of the north line of Winkler County issue and correct and that the lines, boundaries and corners with connections to surveys through which said county line was originally described and correctly set forth just as it is on the ground. This 25th day of March, 1921.

COUNTY SURVEYOR, ANDREWS COUNTY TEXAS  
*James L. Estes*

representative for Winkler Co. certify that I observed for Andrews County that marks natural and sketch just as they

E-547—CERTIFICATE OF TRUE COPY OF PAPERS ON FILE—Class 1. (Arts. 4611-4638.) Texas Standard Form.

THE STATE OF TEXAS, }  
 County of Andrews } I, Sam M. Smith, Clerk  
 of the County Court of Andrews County, Texas, do hereby certify that  
 the foregoing ~~is a true and correct copy of the original~~ is the original of the ~~said notes~~ <sup>BLK 13</sup> of  
 the Boundary line between Andrews-Winkler Counties in which a true  
 copy is now on file in said Court.  
 Given under my Hand and Seal of said Court, at office in Andrews, Texas  
 this 26th day of May 19 21  
*Sam M. Smith* Clerk.  
 By \_\_\_\_\_ Deputy.

FOR SALE BY STAFFORD-LOWDON CO. FORT WORTH

county 49716  
 A true copy filed  
 in my office May  
 17, 1921  
*Sam M. Smith*  
 County Clerk, Andrews  
 County, Texas