

BLK. A19

6.

T Y

BLK. 7.

PERSON

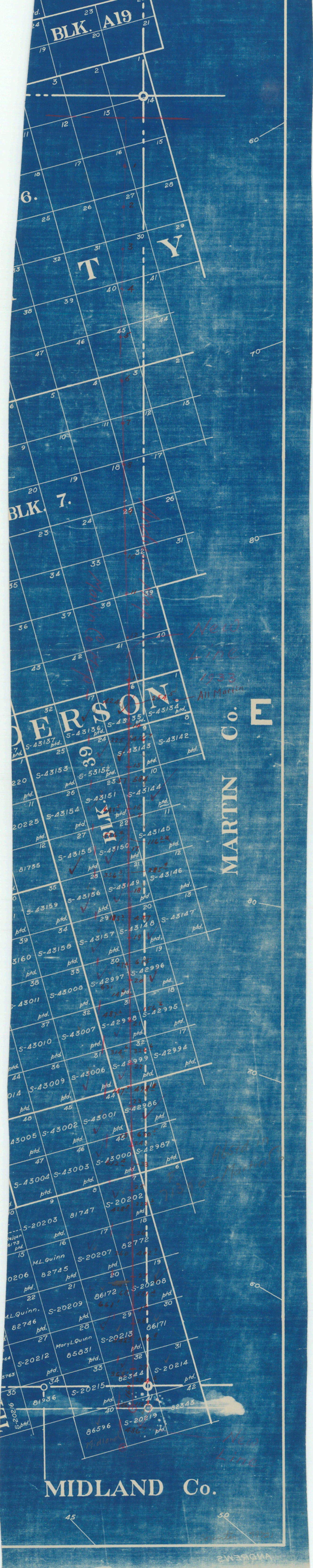
MARTIN Co. E

MIDLAND Co.

New Line 1933 All Martin

Abstd in 71310 - Martin Co

New Line



Andrews-Martin
Boundary Line.

#1

Abstracted in

Vol. 56 - 3/23/33

~~11~~

counter 49722

SEP 24 1933

Andrews Co. Bdry. Line #1