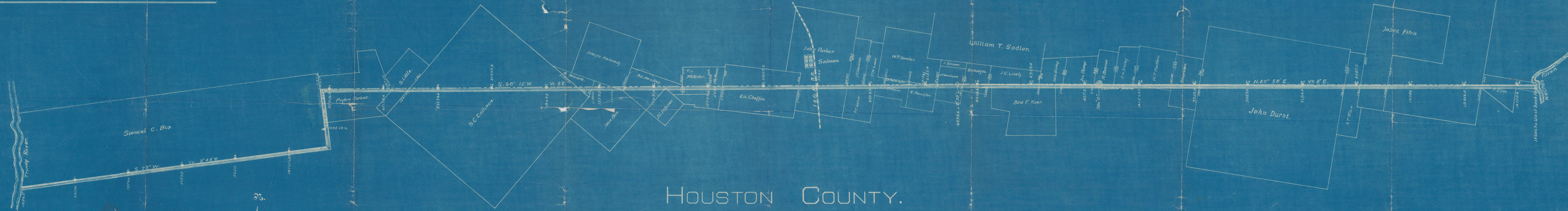


COUNTY LINE MAP,
SHOWING THE ANDERSON-
HOUSTON BOUNDARY LINE,
AND ORIGINAL SURVEYS
CROSSED BY SAME.

SCALE, 1000 VRS-IN.

ANDERSON COUNTY.

HOUSTON COUNTY.



SURVEYED BY F. L. LOVETT AND
JOHN ELLIS, AND COMPILED BY
J. W. SAMMONS FROM THE FIELD
NOTES OF SAID SURVEY.



EXHIBIT B

We, the undersigned surveyors appointed by the County Courts of
Anderson County and Houston County, Texas, hereby certify that
the above map is true and correct and shows the location of the
boundary line between Houston and Anderson Counties, as actually
run by us.
Witness our hands, this 3 day of May 1916.

File No. _____
Anderson County
County, Texas
Dated July 3, 1916
J. W. Sammons
J. H. Ellis
F. L. Lovett

J. W. Sammons
J. H. Ellis
F. L. Lovett
Subscribed and sworn to before me this 3 day of May 1916.
A. B. Smith
Notary Public Houston County, Texas.