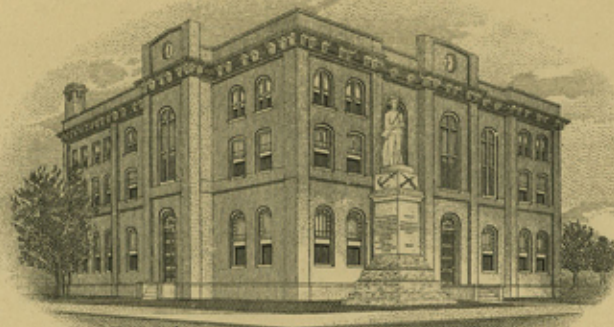


LOCATION OF THE NECHES RIVER BETWEEN THE I. & G. N. R. R. CO SURVEY # IN CHEROKEE COUNTY AND THE A. HENDLEY 160 AC SURVEY IN ANDERSON COUNTY.
 SCALE 500 YARDS TO ONE INCH.
 VAR. 8°00'

J. J. BOLTON, County Judge

1336

- A. B. CHANDLER
County Attorney
- A. M. VINING
District Clerk
- F. C. BINGHAM
County Clerk
- E. C. MARTIN
Sheriff
- C. L. ARNWINE
Tax Assessor
- A. R. ODOM
Tax Collector
- L. T. MOORE
County Surveyor
- E. S. ERWIN
County Superintendent
- BERNICE WILLIAMS
County Treasurer



COUNTY COMMISSIONERS

- LOUIS BUTLER
Prec. No. 1, P. O. Rusk
- HENRY KING
Prec. No. 2, P. O. Alto
- W. E. WILLIAMS
Prec. No. 3, P. O. Jacksonville
- J. F. MARTIN
Prec. No. 4, P. O. Troup, R. F. D.

Cherokee County
Rusk, Texas,

Feb.ry 24th. 1928

Hon J.T. Robinson. Com. er
General Land Office.
Austin. Texas.

Dear Sir.

Enclosing certified copy of Order made and entered by the Commissioner's Court in and for Cherokee County, Texas, defining the chanel of the Neches River as the Western boundary of Cherokee Co. where said river is the dividing boundary between the I.&G.N.R.R.Co. Survey in Cherokee County, Texas, and the A.Hendley Survey of 160 acres in Anderson County, Texas.

I understand that the Commissioner's/Court County of Anderson County passed a simular order, and doubtless you have been supplied with a copy of same by the Surveyor of Anderson Co.

The orders are self-explanatory.

Respectfully Yours

L. T. Moore
Co. Surveyor, Cherokee Co

RECEIVED

FEB 25 1928

REFERRED TO MAP

counter 49760

27. 38
The State of Texas, #
County of Cherokee, # I, F. C. Bingham, Clerk of the
County Court, of aforesaid county and State do hereby cer-
tify that the above and foregoing instrument of writing
is a true and correct copy of the Original Order passed
by the Commissioners Court, accepting the most Western
Channel of the Neches River as the true and correct boundary
between Cherokee and Anderson Counties, at the regular
February Term of said Court. And appearing of record in Book I, on
Page 167, Minutes of Commissioners Court for Cherokee Co., Texas.
Given under my hand and seal of office, at Rusk, Texas,
this 13 day of Feb. 1928.

F. C. Bingham, Clerk County Court,
Cherokee County, Texas.

BY *W. L. Sessions* Deputy.

THENCE South 33 vrs. to the N. W. corner of the A. Hendley 160-acre pre-emption survey;

THENCE down said river, with its meanders as follows:

South 46 E. 206 vrs.; South 35 $\frac{1}{2}$ E. 72 vrs.; South 64 $\frac{1}{2}$ E. 82 vrs.;
South 79 $\frac{1}{2}$ E. 65 vrs.; South 77 $\frac{1}{2}$ E. 48 vrs.; North 71 $\frac{1}{2}$ E. 115 vrs.;
North 77 $\frac{1}{2}$ E. 136 vrs.; North 80 E. 149 vrs.; North 39 E. 51 vrs.;
North 9-1/2 E. 77 vrs.; North 15 E. 82 vrs.; North 19 $\frac{1}{2}$ E. 30 vrs.,
to a point where the lower part of the two Channels intersect.

is and was the true boundary intended between said Counties at this point, and the Clerk of this Court is hereby directed to make a certified copy of this order and furnish same to the County Surveyor of this County for transmission to the General Land Office of Texas, for record there.

Motion made by Mr. King and seconded by Mr. Williams was unanimously carried.

counter 49762

ORDER NO. _____

It having been made known to this Court that there now exists two supposed Channels of the Neches River at the point between the A. Hendley survey in Anderson County and the International & Great Northern Railroad Company Survey, Patent No. 164, Vol. 41, File 1147, Nacogdoches Scrip, in Cherokee County, as shown by a plat hereto attached, and this fact having come to the knowledge of the General Land Office of the State of Texas, and having been referred by the Land Commissioner to the Commissioners' Courts of the Counties of Anderson and Cherokee, respectively, for settlement as to which of said Channels was the true one intended as the Boundary line between the said Counties, and the matter having been fully investigated and evidence heard thereon, it is the opinion of this Court, and this Court find the fact to be, that the most Western of said Channels now existing and described as follows:

BEGINNING at the S. E. corner of said I. & G. N.R.R.Co.survey on the East bank of the Neches river;

THENCE up said river, with its meanders as follows:

North 87 W. 32 vrs.; South 61 $\frac{1}{2}$ W. 34 vrs.; North 89 $\frac{1}{2}$ W. 84 vrs.;
South 83 $\frac{1}{2}$ W. 62 vrs.; South 76 $\frac{1}{2}$ W. 47 vrs.; South 82 $\frac{1}{2}$ W. 46 vrs.;
North 46 W. 70 vrs.; North 85 W. 96 vrs.; North 77 $\frac{1}{2}$ W. 105 vrs.;
North 84 W. 43 vrs.; North 60 W. 22 vrs.; North 80 W. 46 vrs.;
South 17 $\frac{1}{2}$ W. 65 vrs.; South 89 $\frac{1}{2}$ W. 45 vrs.; North 84 $\frac{1}{2}$ W. 62 vrs.;
South 57 W. 45 vrs.; South 76 $\frac{1}{2}$ W. 46 vrs.; South 28 $\frac{1}{2}$ W. 131 vrs.
to a point where the lower part of the two channels intersect;

THENCE South 10-1/2 W. 36 vrs. to the West bank of the most Eastern Channel;

THENCE up the most Western Channel, with its meanders as follows:

South 15 W. 82 vrs.; South 9 $\frac{1}{2}$ W. 66 vrs.; South 39 W. 35 vrs.;
South 88 W. 135 vrs.; South 77 $\frac{1}{2}$ W. 148 vrs.; South 71 $\frac{1}{2}$ W. 132 vrs.;
North 78 $\frac{1}{2}$ W. 75 vrs.; North 64 $\frac{1}{2}$ W. 62 vrs.; North 35 $\frac{1}{2}$ W. 70 vrs.;
North 46 W. 245 vrs.; North 80 E. 70 vrs.; North 64 $\frac{1}{2}$ E. 70 vrs.;
North 55 $\frac{1}{2}$ E. 50 vrs.; North 79 $\frac{1}{2}$ E. 60 vrs.; North 67 $\frac{1}{2}$ E. 72 vrs.;
North 88 E. 108 vrs.; North 15 E. 52 vrs., to a point on the South bank of the most Eastern Channel;

THENCE North 20 W. 43 vrs. to a point on the East bank of said river where the two Channels divide;

THENCE South 35-1/2 W. 45 vrs. to a point on the West bank of said River in Anderson County;

THENCE down said River, with its meanders, as follows:

South 15 W. 20 vrs.; South 88 W. 86 vrs.; South 76 $\frac{1}{2}$ W. 75 vrs.;
South 79 $\frac{1}{2}$ W. 66 vrs.; South 55 $\frac{1}{2}$ W. 65 vrs.; South 64 $\frac{1}{2}$ W. 62 vrs.;
North 86 $\frac{1}{2}$ W. 32 vrs.; South 68-3/4 W. 88 vrs., to the E. B. line of the James Rice survey;

counter 49761

County-Bdy-
Anderson & Cherokee
Counties -

Filed February 25th 1928
J. I. Robinson, Coun-
Clark

Filed for purpose of
showing channel of
Neches River recognized
as boundary between the two
counties - There being two
channels at this place forming
an island -

Clark

counter 49769

this 13 day of Feb. 1928.

Given under my hand and seal of office, at Musk, Texas,
this 13 day of Feb. 1928.

F. C. Bingham, Clerk Cherokee County, Texas.



Anderson Co Bdy, Linc #10

counter 49769