

N^o 0

ARANSAS

Boundary line between

Aransas Co

& 4

San Patricio Co.

Filed Nov^r 3rd 1887

Abstract corrected & copy prepared for Comp^r but held up for final action of Court July 5th 1888. G W Beaumont

Act 3/17/1887

9 June 526

See Wm. Linker 01060
P. 30

counter 49790

To the Hon. the County Commissioners Court of Aransas County Texas.
 In compliance with the order of your Hon. Court passed July 1st 1887,
 directing me to Survey and mark the boundary line between Aransas and
 San Patricio Counties as defined by an act of the 20th. Legislature of
 Texas entitled "An act to amend article 711 of the Revised Statutes
 defining the boundaries of Aransas County" approved March 17th 1887.

I was on the 27th. day of August 1887 at the S. E. Corner of Survey No.
 4 in name of John N. Seguine ready to proceed with said survey and the
 Surveyor of San Patricio County having failed to meet me at said time
 and place as required by law, I on Monday the 29th day of August 1887
 proceeded to survey and mark upon the ground said line as follows.

Beginning at the S. E. Corner of survey No. 4, in name of John N.
 Seguine on Nueces Bay, I ran South 207 vrs. across marsh to the shore
 of said bay, where I put a post of Mesquite wood 6 inches square,
 marked A on East side and S on the West side and around said post I
 threw up a mound of dirt of the size required by law. Thence North at
 1900 vrs. I put a post marked I.M & \bar{A} & \bar{B} and threw up around same
 a mound of dirt as required by law, at 2843 vrs. pass the N. W.
 corner of the M. M. Flores Survey at 3586 vrs. the N. E. corner of
 survey No. 5. in name of John N. Seguine where I placed a Mesquite
 post 8 inches in diameter marked A on S. E. side and S on N. W. side
 I then went to the S. E. Corner of the Larkin Martin survey No. 13 on
 Puerto Bay and there put a cypress post marked A on S. side and S on
 N. side and ~~threw up around said post a mound of dirt~~
 required by law, I then ran S. $30^{\circ}30'$ W. at 1900 8-10 vrs. put a mound
 of dirt, at 3801 6-10 vrs. put another mound of dirt, at 5702 4-10 vrs
 put a mound of dirt, at 7603 2-10 vrs. put a mound of dirt, at 9504
 vrs. or 5 miles put a mound of dirt and a post marked A on S. side S
 on N. side and $5^{\circ}00'$ West side, said mound and post are on the East side
 of a road and near the telegraph line, at 10820 3-10 vrs. the center
 of the San Antonio and Aransas Pass Ry. tract and 424 82-100 vrs. N.
 59 5-4 W. from the junction of the Corpus Christi Branch of said Road

104

Boundary line between
Arkansas Sec. # 4
and
San Patricia Co.

Filed Nov 3rd 1887

counter 49784

ground and that the corners and miles were marked as therein stated

Witness my hand at Rockport, this 3rd. day of
October, 1887.

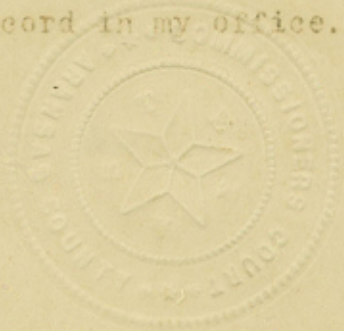
E. S. Winsor,
Surveyor for Aransas County.

The following are the number of acres of each survey, through
which the County line between Aransas and San Patricio Counties passes
situated in Aransas County.

- ✓ S. S. Gillett, Survey - - - - - 160 Acres
- ✓ John Smith Survey - - - - - 346 "
- ✓ Elbert C. Heard, Survey, - - - - - 3957 "
- ✓ San Patricio Co. School Land Survey No. 3. - - - - - 331 "
- ✓ San Patricio County School Land Survey No. 4. - - - - - 1174 "
- ✓ John Keating Survey, - - - - - 344 "
- ✓ Geronimo Valdez Survey, - - - - - 2535 "
- ✓ Marcelo Garcia, Survey, - - - - - 325 "
- ✓ Peter Mahoney, Survey, - - - - - 210 "

E. S. Winsor,
Surveyor for Aransas Co.

THE STATE OF TEXAS,
County of Aransas.) I, L. F. Bailey, Clerk of the County Court and
Ex-Officio Clerk of the Commissioners Court in and for the County of
Aransas, State of Texas, do hereby certify that the foregoing and
attached Report, with the accompanying map, is a true and correct
copy of the original Report and map, as the same is of file and on
Record in my office.



Given under my hand and seal of office, at Rock-
port, this 31st. day of October A. D. 1887.

L F Bailey
Clerk, C. C. A. C.

counter 49493

with the main line, at 11404 3-10 varas or 6 miles, put a mound of dirt, at 13305 6-10 varas, or 7 miles, put a mound of dirt, in an open flat, at 15206 4-10 varas, or 8 miles, put a mound of dirt, at 17107 2-10 varas or 9 miles, put a mound of dirt, in an open flat, at 19008 varas or 10 miles, put a mound of dirt, at 20908 3-10 varas or 11 miles, put a mound of dirt, at 22809 6-10 varas or 12 miles, put a mound of dirt, at 24710 4-10 varas or 13 miles, put a mound of dirt, at 26611 2-10 varas or 14 miles, put a mound of dirt, at 28512 varas or 15 miles, put a mound of dirt, at 30412 3-10 varas or 16 miles, put a mound of dirt, at 31398 varas Post put by me at the N. E. corner of survey No. 5 in name of John N. Seguire, all of the mounds set at the end of each mile are 2 1-2 feet high and 2 1-2 feet in diameter, said lines run through heavy chaparral and scrubby Mesquite timber and are cut out and plainly marked on the ground, line trees are marked with four hacks, I also find the line from the N. E. corner of survey No. 5 in name of John N. Seguire to the S. E. corner of the Larkin Martin Survey 735 varas longer on the ground than the field notes of the survey through which it passes calls for, owing to the surplus in the surveys, I hereto attach a map of said County line showing the surveys through which it passes, also a statement of the Number of acres of each of said surveys lying in Aransas County, I run said line with a variation of $3^{\circ} 15'$ East.

S. Phillips,	} Chainmen.	} Surveyed August 27th. to Sept. 27th. 1837.
P. Waterwall,		
Wm. Gertling,	} Flagmen.	
John McBride,		
Andrew Sorrensen,	} Axemen.	
Felix Merchant		
Henry Young,		

THE STATE OF TEXAS,
 County of Aransas. I, E. S. Winsor, Surveyor for Aransas County, do hereby certify that the foregoing survey was actually made on the

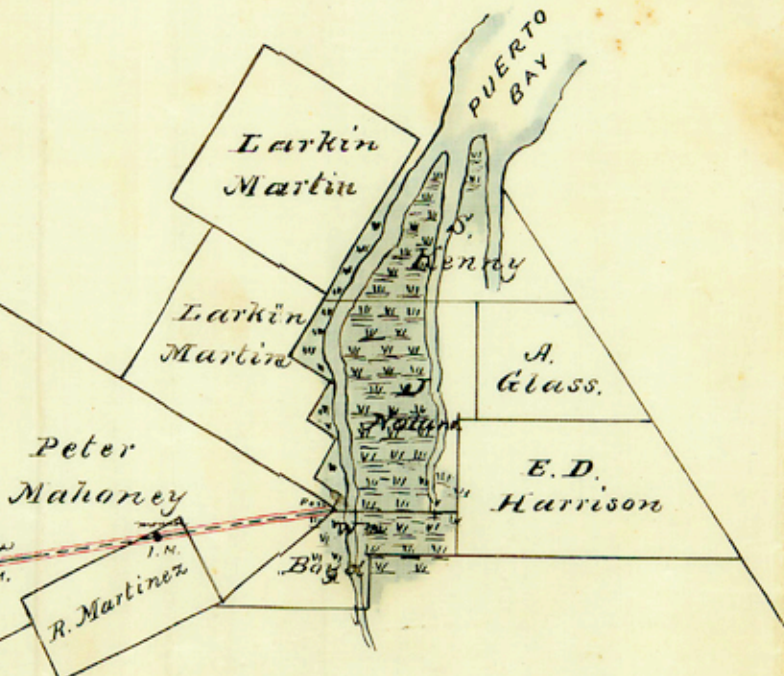
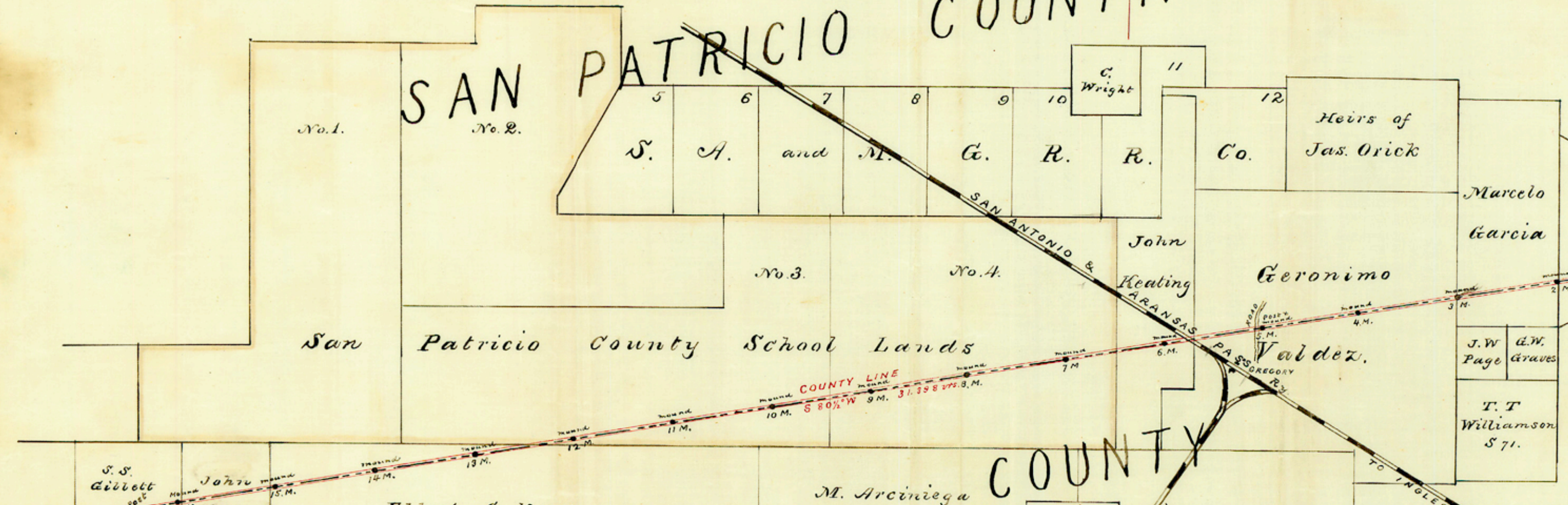
counter 49792

2

Warrant to Survey

COUNTY.

SAN PATRICIO



COUNTY

ARANSAS

Variation $8^{\circ}15'$ East
 SCALE 2000 varas to the Inch.

MAP
 OF THE
 County Line of
 San Patricio & Aransas
 Counties
 as defined by Act of the 20th
 Legislature of Texas
 and approved March 17th 1887
 Surveyed August 27th to Sept. 27th 1887
 BY
 E. Winsor
 Surveyor for Aransas Co.

counter 49795