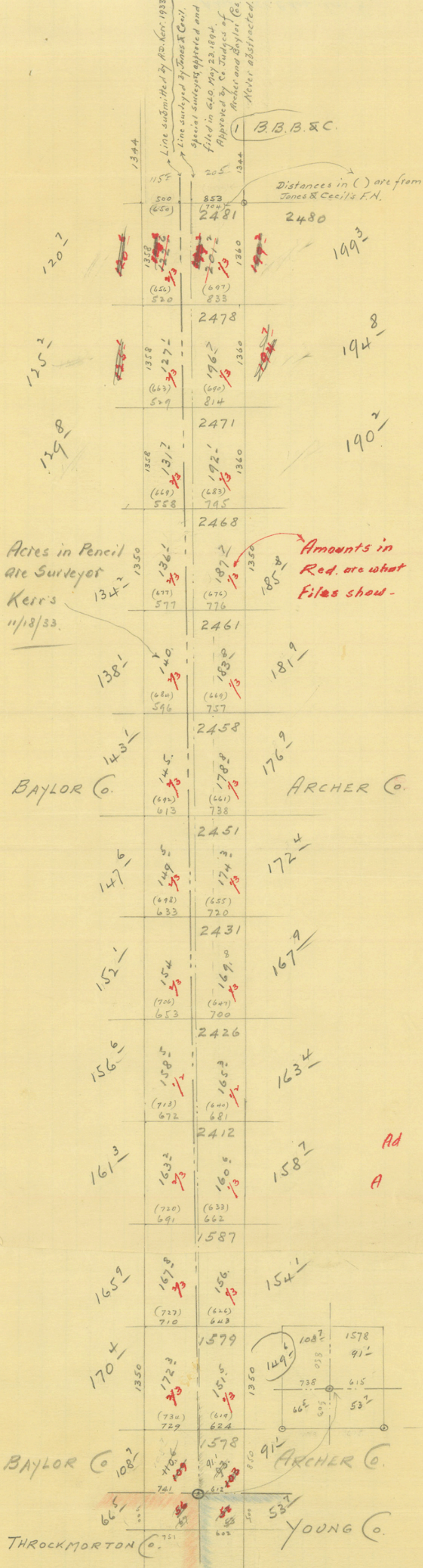


Line submitted by R.D. Kerr, 1933  
 Special Surveyors, appointed and  
 filed in G.O. May 23, 1894.  
 Approved by Co. Judges of  
 Archer and Baylor Cos.  
 Never abstracted.

B.B.B. & C.

Distances in ( ) are from  
 Jones & Cecil's F.N.













Archer - Baylor -

from 14 sections - Inc. Em. Land Co.

Surveys - Dec. 7, 1933 -

Vol. 56

