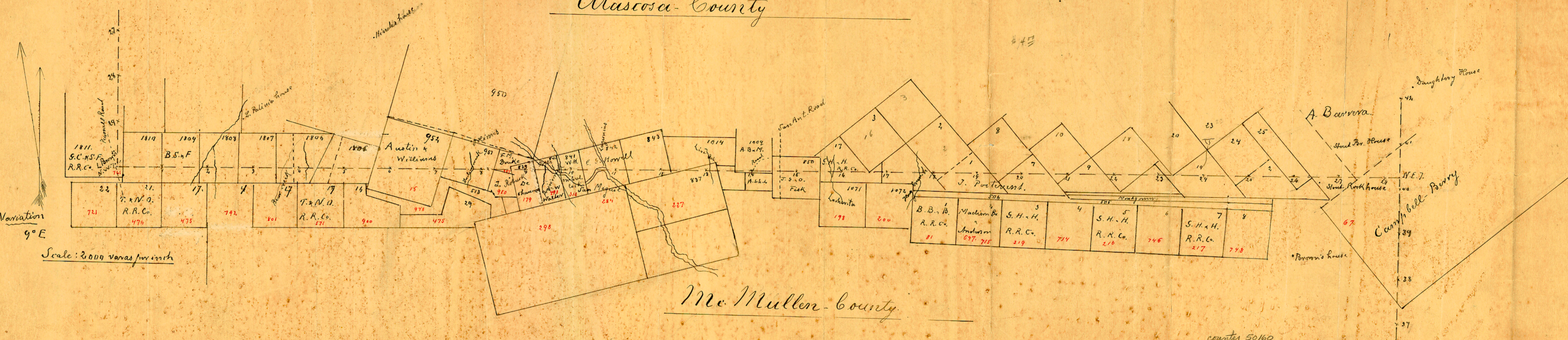


Atascosa County



McCuller County

The State of Texas }
County of McMullen } J. L. D. Alford County Clerk
in and for said County and
State do hereby certify that the ~~copy~~ reverse side hereof is a true and correct copy of the Map made by F. H. Burnmaster Surveyor appointed to survey the North boundary line of McMullen Co in the 26th year of July, 1848 by the Hon. Common Court of said County, and that the original is attached to the Minutes of said Court in Vol. 2 page 363.

Witness my hand and official Seal
at Eldon Tex this 2nd day of April
1894. J. L. D. Alford
Clerk McMullen Co

24

Counter 50161

Surveyed the 6th of March to the 16th inst
1894.

Mason Anderson }
Sam. Jordan } Chain Carriers.

I, J. H. Burmeister, Surveyor appointed to
survey the North line of McMillen Co. do
hereby certify that the foregoing described
survey was actually made by me on the
ground, according to law on the date and
with the Chain-Carriers aforesaid, duly quali-
fied, and that all the corners, lines and
marks of the same, whether natural or
artificial are truly and correctly described
and set forth in the foregoing plat and
field notes.

Frank H. Burmeister
Surveyor

The State of Texas }
County of McMillen } L. B. Alford
Clerk of the County Court in and for said County
and State do hereby certify that the foregoing
4 1/2 (four and one half) pages of Writing is a true
and correct copy of the Field Notes of North Boundary
line of McMillen Co. as surveyed by J. H. Bur-
meister, appointed by the Hon. Comm. Court of
aforesaid County on the 26th day of Feb'y 1894 at
a special term, and the same is entered of
record in Vol 2. on pages 360 et seq. of the Min-
utes of said Court.

Witness my hand and official at Austin
Texas this 2nd day of April A.D. 1894,
L. B. Alford
Clerk McMillen Co.

7 #1, B.B. & B.R.R. line at 1120 var, crossing Hog Branch
at 1900 var, the 18th mile post M.A. XVIII, at 48 1/2 var
as a fence corner, sup. 7 of #2, bears S. 32° E
at 630 varas, said fence bears S. 51° W at 1900 varas
the 19th mile post M.A. XIX, at 1900 varas the 20th
mile post M.A. XX, at 1900 varas the 21st mile
post M.A. XXI, at 1022 var, a ranch bears N. 14 1/2°
W, another bears N. 11° W. P.H. Brown's house bears
S. 68° E at 1900 varas, the 22nd M.P. M.A. XXII at 1878
var R.H. Brown's house bears S. 59 1/2° E, another bears
N. 29° W at 1900 varas the 23rd mile post a rock
mkd. M.A. XXIII Co. line, a ranch bears, N. 71° E,
at 817 varas Daughtery's house bears, N. 69 1/2° E,
Basin Hill bears, N. 31 1/2° E. at 1900, the 24th m.P.
a rock mkd M.A. XXIV, at 1070 varas a point 1452
var, S. 40° E of the supposed S. 7. of #23 at 1327
varas a branch, at 1900 varas the 25th m.P. a
rock, ~~mkd~~ M.A. XXV, at 413 var, a branch, at 800
var, a branch, at 1900 var, the 26th m.P. mkd
M.A. XXVI, at 200 var, a branch, at 727 var, a
fence. 982 var. Basin Hill bears, N. 13 3/4° E, Stout
Bn. house bears, N. 24° E, about 1400 varas, at 1121
var, a point 100 var, North of Stout's Rock House
at 1780 var, a fence, at 1900 var, the 27th m.P.
a rock, mkd M.A. XXVII, at 898 var, fence, at
889 var, fence, at 1125 var a creek, at 1097 var, a
branch, at 1620 var, a rocky creek, at 1900 var, the
28th mile post, a rock M.A. XXVIII at 622 varas
intersecting east line of Mc Mullen County
at a point 515 var. North of the 40th m.P.
on said line. set a live oak post mkd
A.M. and large rock mound, whence a post
oak mkd ≡ bears south 18 var, a Live Oak
mkd ≡ bears west 31 var.

a fence at 1490 var a mtd line, at 1900 var,
 the 10th mile post M.A. X, at 1220 var the San Miguel
 at 1260 the center of water course, at 1750 var
 re-crossing water course at 1790 var the mouth
 of Lagunias Creek at 1815 var on north bank
 of San Miguel again, at 1900 var the XI
 mile post M.A. XI at 1900 varas the 12th mile
 post M.A. XII, at 800 var, Crossing fence, at
 1900 var. the 13th mile post, M.A. XIII at 275 var,
 crossing spring of Live Oak Creek, at 1900 var,
 the 14th mile post, M.A. XIV, at 121 var, Crossing
 a road south of an old mtd tree \equiv at 870
 var, crossing a mtd line, the supposed
 West line of #958, 11 var N + 3 var E of a small
 mesq. tree, mtd \equiv another mesq mtd \equiv
 brs. 8 var. South west 12 west, the supposed N.E
 7 of a \square in name of Atascosa County.
 School land, at 1227 1/2 var, a post mtd
 A.M. placed in the San Antonio, Peasan-
 tou - Tilden road, at 1280 varas about 100
 var, north of a lone Live Oak, at 1900 var
 the 15th mile post, a mesq. tree 6 in, in dia,
 tapped all around and squared and
 sharpened on top mtd. A.M. XV, at 1900
 varas crossing east line of #958 - 419 var
 N. 1 1/2 W. of the supposed N. N. 7 of 1971, and
 S. N. 7 of #17 G. 26 + 26 R.R.C., as established
 by Tarrant, at 1550 var. center of La
 Charita or San Patricio Creek, at 1600
 varas, 33 var. N. of the junction of 2 creeks
 at 1605 var, crossing branch, at 1900 var, the
 16th mile post - mile post M.A. XVI, at 1450
 varas entering open prairie at 1900 varas the
 17th mile post, M.A. XVII near a small drain, at
 1112 1/2 varas a point, N. 1° E. 1042 varas, of the N. N.

Q²

M.A. V. at 175 varas. Hindes house, bears N. $10\frac{1}{2}^{\circ}$ E
at 440 var. a rock pile on a neighborhood
road at 1212 varas. crossing fence (supposed
line of Austin & Williams #952 at 1629 var.
Hindes house bears N. $3\frac{3}{4}^{\circ}$ W. at 1900 var. the
6th mile post M.A. VI on top of black Chap.
Hill. (connection here with Austin & Williams
#950. S.W. 7. Beg. at aforesaid corner, thence
east 55 var. South 2172 varas County Line East
13 var. the 6th mile post) thence east at 1900
varas, the 7th mile post M.A. VII at 427 $\frac{1}{2}$ varas
Crossing east line fence of #952. (Connect.
here with N.E. Cor. of #15. N.W.O.R.R Co. Beg. at
at said corner thence North 1020 var. said East
line fence N. $15\frac{3}{4}^{\circ}$ E at 1180 var. S.W. Cor of Mc
Fadden #951 made by private surveyor at 1580
var. the County line, 427 $\frac{1}{2}$ var. east of the 7th
mile post) at 504 var. J. Hines house bears N.
 $43\frac{1}{4}^{\circ}$ E. at 742 var. a gully, at 980 varas. Indian
Creek, at 1900 varas the 8th mile post. M.A. VIII at
390 varas J. Hines house bears N. $32\frac{3}{4}^{\circ}$ W. at 535 $\frac{3}{4}$
var. J. Robuck house bears $502\frac{1}{2}^{\circ}$ E. at 654 varas
crossing fence the east line of #951 S. $15\frac{1}{2}^{\circ}$ W.
938 var of the N.E. corner of said #951 at 1208 var.
Robucks house bears S. $10\frac{3}{4}^{\circ}$ E. at 1611 crossing road
at 1900 var. the 9th mile post M.A. IX thence east at
353 var. a point South 368 var. of the N.E. 7
of the De Champs Survey at 450 var. crossing
Potts field, at 600 var. about 100 var. south of
Potts house, at 749 $\frac{1}{2}$ var. leaving field at 745
var. Steep bluff up Prairie Creek at
1100 var. the San Miguel, at 1300 varas the
water course of San Miguel, at 1354 varas
on North bank at 1430 var. crossing a creek
near its mouth, at 1408 $\frac{1}{2}$ var crossing

187

Field Notes of the North Boundary Line of Mc Miller County Texas

- Beginning at a post marked F.A. XXX cor. on the east side of the Pearsall - Gilden road, whence a compass bears N. $17\frac{1}{2}^{\circ}$ E. 248 var as thence east with a variation of 9° E. over a brushy ridge, at 480 varas going down in an open prickly pear valley at 1460 var passing N. of a barn. Mott at 1900 varas a post mkd A.M. 1. for 1st mile post on top of black Chaparral Hill, thence over said ridge and down in an open valley crossing a draw of Livingstone Creek at 1900 varas.
- 2 the 2nd mile post, mkd. A.M. II. between two prongs of said Livingstone, thence at 455 var, crossing the most eastern draw before going up another Chap. Hill, at $817\frac{3}{4}$ varas. L. Patricias house bears N. $16\frac{10}{10}^{\circ}$ E. at $1125\frac{3}{4}$ var, said house bears N. $8\frac{3}{4}^{\circ}$ E. (here made connection with supposed N. & E 7 of 1808 and S.W. 7 of 1920 to wit: North 1506 var, East $229\frac{1}{2}$ var, and 335 var) continuing on
- 3 main line at 1900 var. the 3rd mile post M.A. III, and rock pile in an open pear flat 1415 varas crossing Bear Creek between 2 big Mesq. Trees, mkd \equiv at 1625 var, crossing a small pond near a 5 prong mesq. tree, mkd \equiv at 1777 varas, crossing R. Holland fence (North 745 var. of the S.W. cor. of said fence) at 1900
- 4 varas the 4th mile post, M.A. IV. 637 varas crossing East prong of Bear Creek, a little north of an eight prong mesq. tree, mkd \equiv at $1469\frac{1}{2}$ var, crossing east line of said R. C. Holland fence at 1900 var the 5 mile post
- 5

Q5

Atascosa Co. Bdwy. line #2

Atascosa Co. Bdwy. line #2



+ 5 2

Atascosa County
South Bdy. line
& North bdy. line
of M^c Mullen

Filed April 5/94

Examined, applied
and approved May 12/94

Abstract corrected
May 12/94 Roeburg
May 12/94

counter 50167