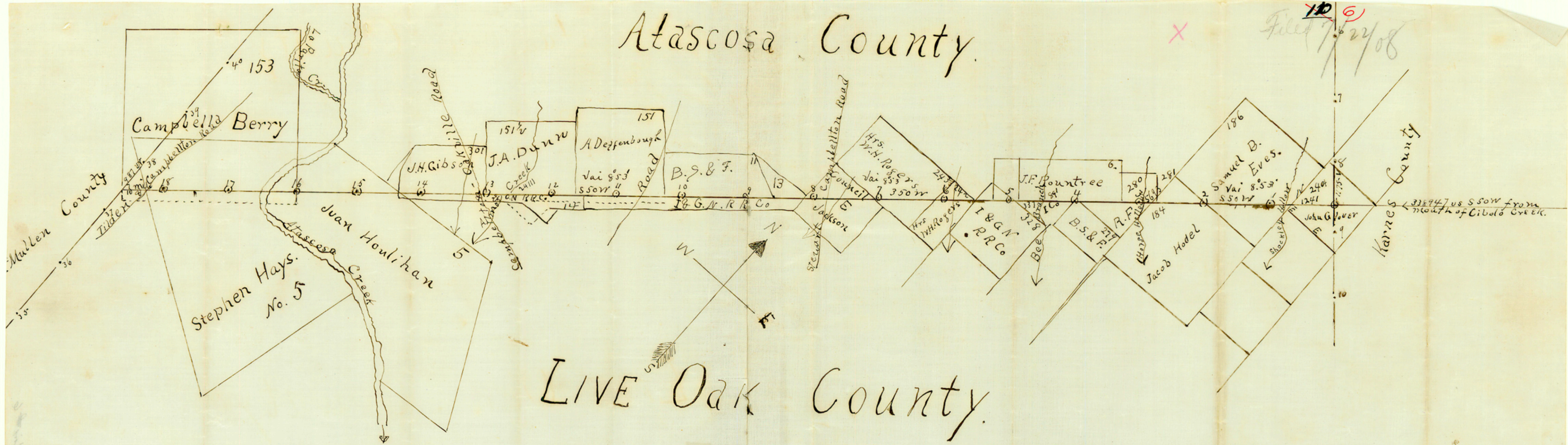


Atascosa County.

Filed 7/22/08



LIVE OAK County.

Plat
of the
Boundary Line between
Atascosa & Live Oak Counties
from a survey made in accordance with an
Order of the Hon. County Court of Atascosa
County, Dated September 3rd. 1906.

I, Calvin G. Bass, County Surveyor of Atascosa
County do hereby certify that the foregoing plat
truly and correctly represents the boundary line
between Atascosa and Live Oak Counties as it was
surveyed and established by virtue of the foregoing
mentioned order.

Witness my hand this the 17th day of June 1907.

Calvin G. Bass
Co. Sur. Atascosa Co. Texas.

counter 50205

6/

~~102~~

Atascosa-Live Oak

Boundary Line

Filed JULY 22nd '08

John J. Terrell
Counr.
By Humicutt

6^{5/11}

count 50506

703
51

The State of Texas |
County of Atascosa | I, R. A. White, Clerk of the County Court in and
for said County and State, hereby certify that the above and foregoing
is a true and correct copy of the original report of Calvin G. Bass,
County Surveyor of Atascosa County; of the survey of the County line
between Atascosa and Live Oak Counties, and the order of the County Court
approving same. Also a copy of the plat made by said Surveyor and attach-
ed to said report, as the same appears of Record in Book B" pages 428-429,
430 & 431 minutes of said Court.

Witness my hand and the seal of the County Court of Atascosa County,
this 17th. day of July 1908

R. A. White
Clk. County Court Atascosa Co.



Atascosa Co. Tex.

counter 50211

Atascosa Creek from which an elm 20" dia. mkd. V brs. S. 50 ⁶
 10.8 vrs. a leaning hack-berry 20" mkd. A brs. N. 45 E. 19.2 vrs.
 at 31508 vrs. right bank of Atascosa Creek at 31619 vrs. cross
 drain at 31700 vrs. out of valley at 31980 vrs. top of Bluff at ~~323~~
 32313.6 set mile post and marked it 17 A. L. at 32450 vrs. cross
 drain at 32922 vrs. a stake under McCowan's fence at 34214.4 vrs.
 set mile post and marked it 18 A. L. at 34356.9 vrs. a mes. 24"
 fore & aft at 34778 vrs. cross Campbellton and Tilden Road at
 34877 vrs. cross Corter Hollow at 35325 vrs. cross drain at 35500.5
 vrs. a stake in bdy. line of Campbell Berry Sur. from which the
 S. W. Corner of same brs. S. 41-1/2 E. 319 vrs. at 35527.6 vrs a
 post on McMullen County east bdy. line 987 vrs. south of the 38th
 mile post of said McMullen County line this being also the *South*
 corner of Atascosa Co. and the N. W. Corner of Live Oak Co. from
 said post which is marked 18-7/10 A. L. a Mes. mkd. A brs. S.
 69 E. 24.3 vrs. a do Mkd. 2 Brs. N. 67-1/2 E. 35.9 vrs.

John S. Fenner)
 William Thomason) Chain Carriers.

I, Calvin G. Bass, County Surveyor of Atascosa County, Texas
 do hereby certify that the foregoing ~~is~~ described survey was made
 by me on the ground according to law on the date and with the
 chain carriers aforesaid, and that all the corners, lines, boun-
 daries and marks of the same, whether natural or artificial, are
 truly and correctly described in the foregoing field-notes and
 the attached plot.

Calvin G. Bass
 County Surveyor Atascosa
 Co. Texas.

vrs. a stake on west side of Stewart- Campbellton Road at 15206.4
 vrs. set mile post and marked it 8 A. L. at 15461.8 pass 3 vrs.
 S. 40 E. of a stake at 15807 vrs. a mes. stake set for some corner
 ✓ (may be a corner of I. & G. N. Sur. #13) brs. S. 89-35' W. 9.4
 vrs. and a mes., Mkd. \leq brs. N. 7-3/4 W. 5-1/2 vrs. at 16708
 ✓ vrs. N. E. Corner of Sur. # 11 B. S. F. brs. N. 55-3/4 W. 1056 vrs
 at 16729 vrs. ^{the} N. E. Corner of said Sur. # 11 brs. N. 54-3/4 W.
 1051 vrs. from said N. E. Corner a mes. 10" (dead) mkd. X brs.
 ✓ N. 45-3/4 W. 22.1 vrs. Do. mkd. X brs. N. 53-1/2 E. 23 vrs. at
 17107 vrs. set mile post and marked it 9 A. L. at 17300 vrs. cross
 drain at 17497 vrs. cross drain at 18693 vrs. cross drain at 19008 vrs
 set mile post and marked it 10 A. L. at 19400 cross gully at 19680
 ✓ cross N. E line of sur. #151 for A. Deffenbaugh 251 vrs. N
 40 W. from its East Corner as made by Von Homeyer at 19855 vrs
 cross drain 20289.7 a stake on east side of private road at 20800
 vrs. a mes. 6" mkd. A brs. N. 40 W. 2 vrs. at 20848.8 vrs. mes.
 mkd. \leq brs. S. 40 E. 7 vrs. at 20908.8 vrs. set a mile post
 and marked it 11 A. L. at 21604.4 vrs. intersect a point 221
 vrs N. 40 W. from a post set on an old wood fence from said post
 a mes. 14" mkd. T Brs. S. 20 E. 64.2 vrs. 22283.2 vrs. set stake
 ✓ under fence and S. E. Bdy. line of Sur. #151 A. Deffenbaugh at
 22420 vrs. cross drain at 22809.6 vrs. set mile post and marked
 it 12 A. L. at 24075 vrs. left bank Chiquihuitilla creek at 24246 vrs
 right bank of same at 24710.4 vrs. set mile post and mark it 13
 A. L. at 24830.5 vrs. intersect a point 79 vrs. N. 40 W. of a
 ✓ point a supposed corner of Gibson & Dunn Surveys from which a
 mes. mkd. X brs. S. 38 W. 17 vrs. at 25047.1 vrs. a post mkd.
 A. L. on north side of Oakvill and Campbellton Road at 25540 vrs.
 rocky hollow at 26460 vrs. cross drain at 26611.2 vrs. set mile
 post and marked it 14 A. L. at 27440 vrs. at or near Bdy.
 Gibson Sur. at 28512 vrs ^{this is the 15th m^l instead of 16th} set a mile post and ~~was~~ marked it 16 A.L
 at 30784 vrs. a rock burried in ground 2-1/2 vrs. left of dead
 live oak at 30860 vrs. bluff on left side of Atascosa Valley
 at 30900 vrs. enter valley at 31451.5 vrs. stake on left bank of

(no 16 m^l PO. set
 by this. T.A.)

counter 50209



corner of Atascosa and the North corner of Live Oak County and from which the 8th mile post on said Karnes County line brs, N. $40^{\circ}-12'$ W. 1175 vrs. and a small mes. mkd. \bar{V} brs. S. $7-1/4$ E. and a point on the North bdy. line of Survey # 244 in the name of John Glover brs. N. $40-12'$ W 1065- $1/2$ vrs. and from said point the N. E. Corner of said Survey brs. E. 1610 vrs. Thence S. 50 W. for the boundary line between Atascosa and Live Oak Counties at 116- $1/2$ vrs. a mes. 14" mkd. \bar{X} Brs. N. 40 W 1 vrs. at 1241 vrs. cross boundary line between said Sur. # 244 and Sur. #186 in name of Samuel B. Eves 271.8 vrs. North of the said S. W. Corner of said Sur. #244 at 1474 vrs. cross Shokley Hollow at 1900.8 vrs. set first mile post and mkd. \bar{I} A. L. at 2751 vrs. a mes. 8" mkd. \bar{V} - brs, S. 40 E. 4.9 vrs at 3801.6 set mile post and mkd. \bar{I} A. L. at 4503.2 vrs. a mes. 12" mkd. \bar{A} brs. N. 40 W. 3.2 vrs. at 4778 vrs. cross branch at 5600 vrs. a house and windmill brs. about 300 vrs. S. E. at 5693 vrs. cross horse Hollow at 5702.4 vrs. set mile post and marked \bar{I} 3 A. L. at 7079.6 vrs. a mes. 12" mkd. \bar{V} brs. S. 40 E $1/3$ vrs. at 7089 vrs. cross branch at 7484.9 vrs. cross bdy. line e between Sur. # 279 and 280 and 84.3 Vrs. E of S. W. coner of said Sur. #279 which is also the S. W. Corner of #o. 280 at 7603.2 vrs. set mile post and marked \bar{I} 4 A. L. at 8591 vrs. cross channel of Bee branch at 9125.4 vrs. the south corner of sur. # 6 made for J. F. Rountree brs. N. 40 W 46 vrs. this is also the East Corner of Sur. #282 L. I. & Mfg. Co. at 9504 vrs. set mile post and marked it 5 A L. at 9837 vrs. the south cor. of said Sur. #282 at 10225 vrs. crass a branch at 10484.9 vrs. cross W. Line of Sur. #328 I. & G. N. R. R. Co. and 1227- $1/2$ vrs. north of its S. W. Corner at 10486.8 vrs. a post mkd. A. L. on Eastside of S. A. & C.C. Road at 11200 vrs. cross drain at 11404.8 vrs. set mile post and marked it 6 A. L. at 13305.6 vrs. set mile post in channel of McCoy hollow and marked it 7 A .L, at 13344 vrs a leaning forked mes. one limb mkd. A brs. N. 40 W. $1-1/2$ vrs. at 14430 cross drain at 14552 vrs. a mes. 8" mkd. \bar{Z} brs. N. 40 E 2 vrs. at 14767 vrs. cross a fence, course N. $67-1/2$ W. at 14862.3

Sept- 16th. 1907 -

This day came on to be heard the report of Calvin G. Bass, County Surveyor, appointed by the Court as surveyor ~~for~~ Atascosa County, to show, mark and establish the County line between Atascosa and Live Oak Counties, and said Report and map accompanying the same being fully considered by the Court and it appearing that the survey has been made fairly and in conformity with law and the order of the Court; it is therefore ordered and decreed that the said report be and the same is approved and ordered of record in the minutes of this Court.

The State of Texas X
X
County of Atascosa X

To the Hon. County Court of Atascosa County :

In obedience to and in conformity with an order of the Hon. County Court of Atascosa County, of Sept- 3rd. 1908, appointing Calvin G. Bass, as surveyor to survey, mark and establish the boundary line between Atascosa and Live Oak Counties: I Calvin G Bass herewith submit the following report :

At the time set I proceeded to Karnes City, Karnes Co. Texas, and there met R. W. Fenner the Surveyor representing L. O. County; we took the variation of the needle there by the aid of Two rocks set there by the Government for that purpose and found the same to be $8^{\circ} 53'$ East. We then proceeded to the mouth of the Cibole Creek, the starting point of the old San Patricio District line of which this said Atascosa and Live Oak County boundary line forms a part. We began May 23rd. 1907 at a stake on south bank of the San Antonio River and opposite the mouth of the Cibole Creek from which a Cotton wood 18" in dia. mkd. \checkmark brs . S. 71 E. 97 vrs. a do. 22 " mkd X brs. S. 87 W. 19.9 vrs. Thence S. 50 W. variation $8^{\circ} 53'$ East (Gurley's 5" Transit) 33894.7 vrs. a large post mkd. A & L. on the S. W. boundary line of Karnes Co. and for the East

counter 50207

Atascosa Co. Adm. Lin #6

11502 intms



The 17th. day of July 1908

~~10~~
~~1~~
Filed July 22/08

atascosa 431 minutes of said Court.

approving same. Also a copy of the list made by said Surveyor and attach-

between Atascosa and Live Oak Counties, and the order of the County Court

County Surveyor of Atascosa County, Texas, and the Surveyor of the County Line

is a true and correct copy of the original report of Calvin G. Bass,
for said County and State, hereby certify that the above and foregoing
County of Atascosa § I, R. G. White, Clerk of the County Court in and
The State of Texas §

CLK. County Court Atascosa Co.
R. G. White

counter 50212

\$5.50
plus jacket