

Austin Co Bdry Line 1

No. 1

Co. Bdry Line between
Austin Co
&
Fort Bend Co.

Filed Nov. 21st 1887.

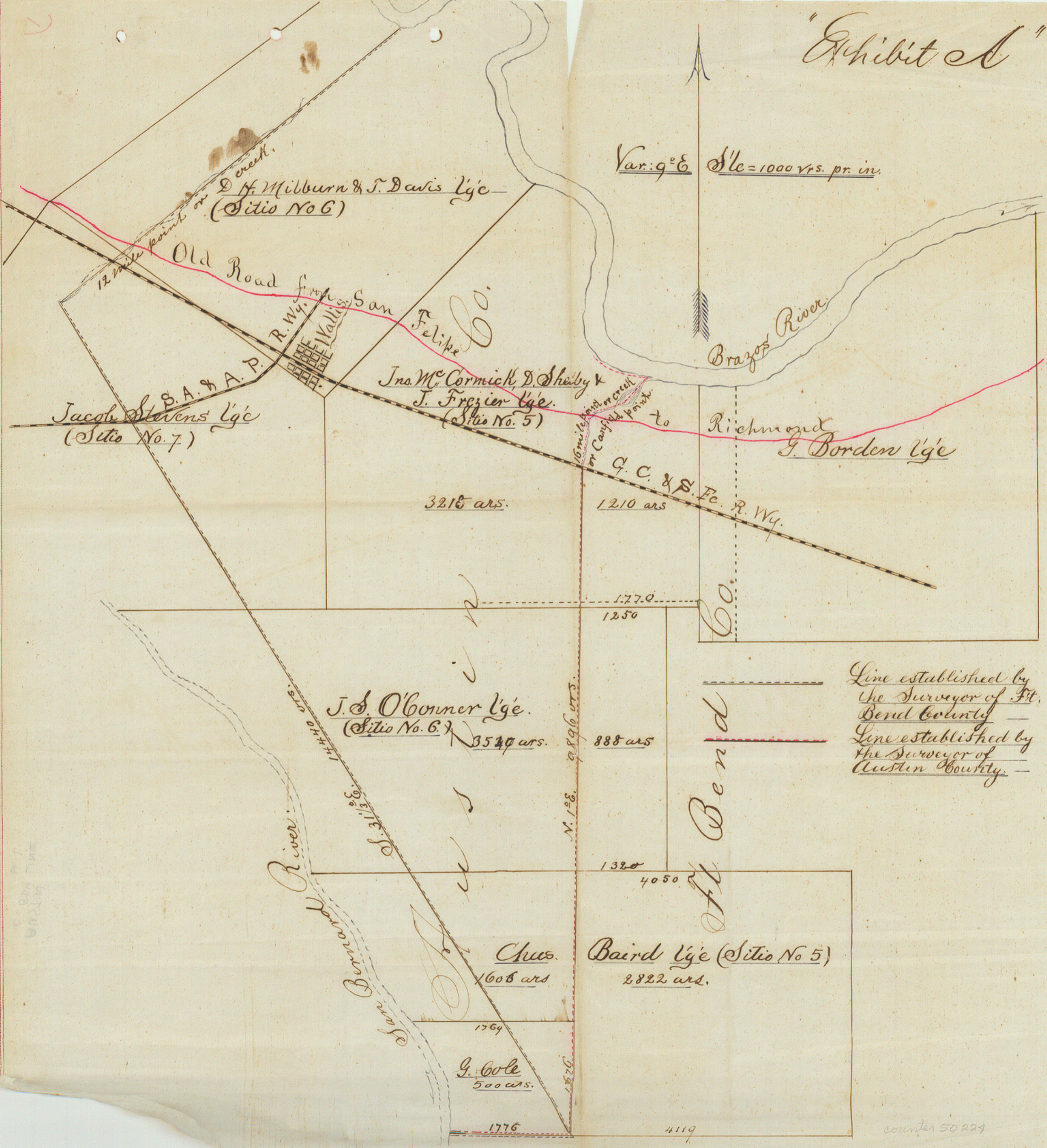
See endorsement on
letter within

This line will have
to be decided the
Court before it
is applied to the
Co maps

Dec 20/88 Beaumont

counter 50223

"Exhibit A"



Var: 9° E 1" = 1000 fts. pr. in.

D. H. Milburn & J. Davis Lge
(Sitio No 6)

Old Road from San Felipe Co.

Jacob Stevens Lge
(Sitio No. 7)

Jno. McCormick, D. Shelby & J. Frazier Lge.
(Sitio No. 5)

Richmond J. Borden Lge

3216 ars.

1210 ars

1770
1250

J.S. O'Conner Lge.
(Sitio No. 6.)

3540 ars.

888 ars

Line established by the Surveyor of Ft. Bend County
Line established by the Surveyor of Austin County.

1320
4050

Chas. Baird Lge (Sitio No 5)
2822 ars.

1608 ars

G. Cole
500 ars.

1769

1776

4119

counter 50224

4
1 Filed November 7th 1887.

J. W. Matthews Clerk

By H. Matthews Deput

2
3
4
5
6 The State of Texas
7 County of Austin

J. W. Matthews Clerk

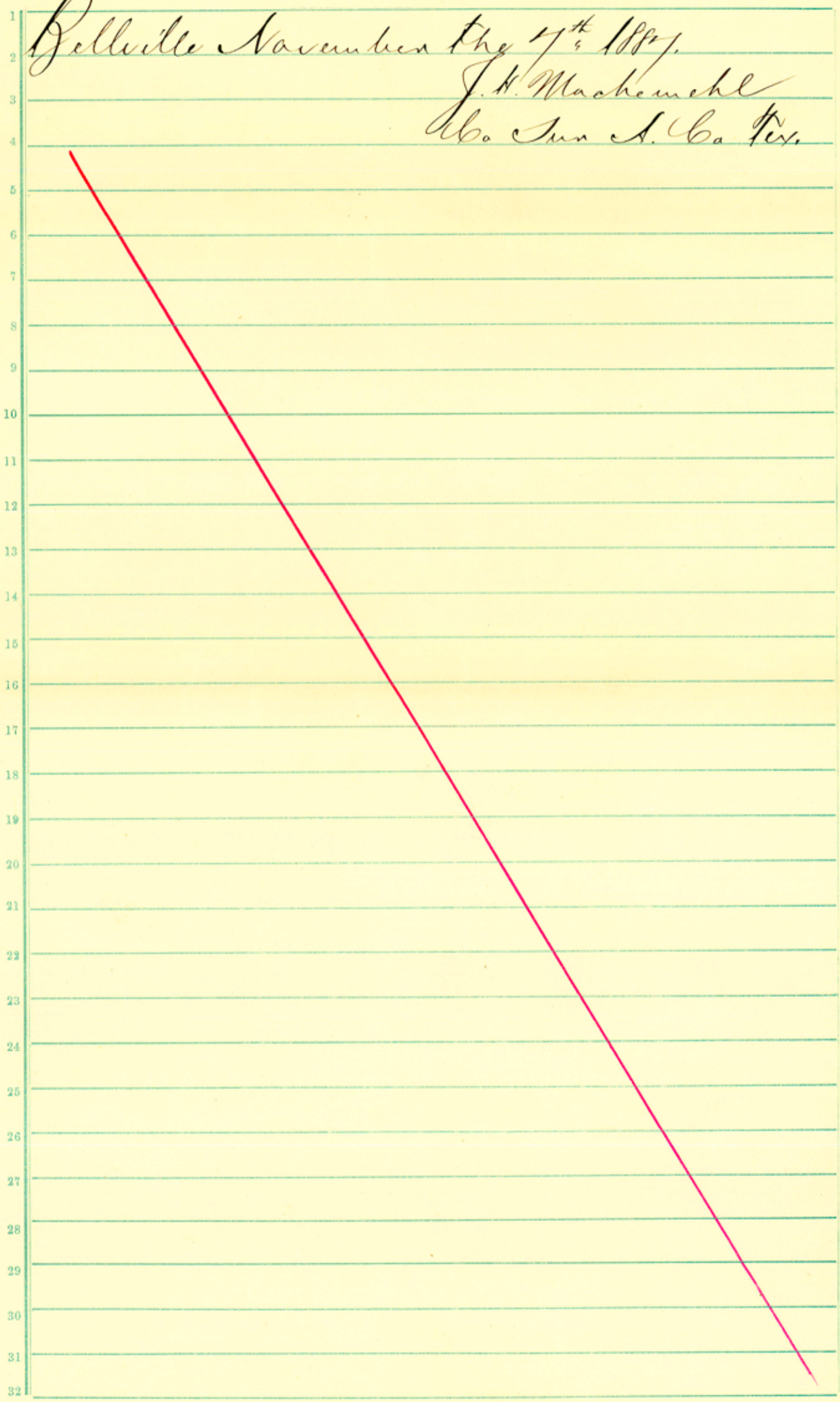
8 of the County Court and Ex Officio Clerk of
9 the County Commissioners Court of Austin
10 County do hereby certify that the above
11 foregoing is a true and correct copy of the
12 order of the Commissioners Court of said
13 County made at a special term thereof
14 held on the 7th day of November 1887 approving
15 the report of survey of the boundary line
16 between Austin and Fort Bend Counties, also
17 copy of the report of survey made by J. H.
18 Mackenhehl County Surveyor of said Austin
19 County establishing said boundary line, all
20 of which is of record in the Minutes of said
21 Commissioners Court in Vol "J" in pages
22 18 to 22 inclusive.

23 Given under my hand and the
24 seal of the County Commissioners
25 and Court of said County on
26 this 14th day of November
27 A. D. 1887.

J. W. Matthews Clerk C. C.

By H. Matthews Deputy

Belleville November the 4th 1887.
J. H. Machemehl
Mo. Sur. S. Co. Tex.



1
2 respective Commissioners Courts, And
3 relying on such statement by said Co Judges
4 I felt authorized to agree with said Farr
5 on some day other than first designated to
6 meet said Farr and run said line. And I
7 did correspond with said Farr with a
8 view to set a day to run said line as before
9 said but failed to agree with him on a day
10 prior to the said 1st of August, though
11 I was assured by the said Farr that it
12 would be most agreeable to him to fix some
13 day in October provided we should be au-
14 thorized by our respective Com Courts
15 to do. And I believed and so informed the
16 said Farr by letter on the day of August
17 1887 prior to the 1st of August 1887 that
18 we were so authorized, and suggested to him
19 to appoint some day in the latter part of
20 October.

21 I had no idea that the said Farr
22 would go to Wallis on the 1st of August as
23 aforesaid for said purpose but that we
24 would agree on some day in October last to
25 suit the convenience of both of us to run said
26 line. Had I known that said Farr intended
27 to adhere to the day first indicated to run
28 the line, I should have met him on that day
29 at Wallis. My failure to do so was wholly
30 due to the misunderstanding occasioned by the state-
31 ments & circumstances as above stated.
32 All of which is respectfully submitted.

ings, distances and manners are truly described in the foregoing field notes

Bellville November the 7th 1857.

Martin M. Keener

J. H. Wachenhehl

Co Sur A. Co. Tex.

State of Texas
County of Austin

As supplemental to the above report I think proper to state to the Hon Commissioners Court that owing to a misunderstanding between myself and T. M. Fann Co surveyor of Ft Bend Co who had been appointed by the Co Commissioners Court of Ft Bend County to assist in running said line I failed to meet the said Fann at the date first selected to run the same, to wit: on the 1st day of August last. That said misunderstanding arose from the fact that I was advised by the Co Judge of Austin County and the Co Judge of Ft Bend County in the presence of each other, and of Kirch Gallin and A. Regebrecht Co Commissioners of Austin County and Paulap Co Commissioner of Ft Bend Co and with the approval of all of said Commissioners, that Mr Fann and myself might agree on some day to suit ourselves to run said line provided such day should give us sufficient time to make the survey & make our reports to the next succeeding regular terms of the

1
2 is a deep valley with a well defined
3 channel in a point of timber projecting from
4 the Brazos bottom into the prairie for a dis-
5 tance of about 300 rods and forming a very
6 prominent object in the landscape in that
7 section, visible for many miles around.

8 It is dry at its head but has water in it
9 at the point of the crossing of said road and
10 at a point about 340 rods below the crossing
11 of said road the channel is obliterated by the
12 washing in of ploughed soil for a distance of
13 220 rods, it is then a well defined and deep
14 channel to the river. The first settlers
15 who located on this creek at the point where
16 said road crosses it was named 'Caufield's'
17 from which it became known as 'Caufield's
18 Point'. The creek has ever since been design-
19 ated as 'Caufield's Point'. Caufield in early
20 times sold to Kasp Habermacher who lived there
21 many years. We could not learn that any of
22 these creeks were ever designated differently
23 than as above stated.

24 Surveyed Oct 14th to 21st, 1887.

25 O. G. Cannon }
26 M. M. Kenney } Chain Carriers
27 J. H. Macheuhl }

28 J. H. Macheuhl Surveyor of Austin County
29 do hereby certify that the above & within de-
30 scribed line between the Counties of Austin
31 & Ft Bend was actually run by us on the ground
32 according to law and that the marks, bear:

1
2 8 Mile creek, 12 Mile creek (adapted by
3 Surveyor of Ft Bend County as 16 Mile creek)
4 and 16 Mile creek being at those distances
5 from San Felipe and hence the terms, 8 M
6 12 M. & 16 M. does not apply to length of
7 said streams, 8 Mile creek is the largest
8 & largest but seldom has water in it at the
9 crossing of said road. It does not empty
10 into the Brazos river, but is lost in a large
11 swamp lake several miles in length and
12 breadth. This stream was afterwards
13 designated by the first settlers in its banks
14 as "Allen's Creek" It is mentioned in the
15 original survey of Miles Allen's 1/2 league as
16 8 Mile creek and is also mentioned in the
17 original survey of the Stephen Richardson
18 1/2 league by the same name, both of said
19 surveys being in the immediate vicinity of the
20 place where said road crosses said creek.
21 12 Mile creek is recited in a deed from Thomas
22 Paris to Stephen Richardson of date January
23 the 2nd 1832. said deed is No 22 file "D"
24 Austin County records. Stephen Richardson
25 was the first settler there and his creek
26 was afterwards named Richardson's branch by
27 the old settlers in that neighborhood by which
28 name it is still known. It is a dry ravine
29 and never has water in it except during rainy
30 weather. It does not empty into the Brazos
31 river but is also lost in a swampy lake
32 more than a mile in extent, 16 Mile creek

1 said McConnick league. The hereto at-
2 tached Map marked Exhibit "A" is made a
3 part of this report and fully shows the
4 line as herein described (the red line) and
5 also the line run by the surveyors of Ft
6 Bend County (the blue line).

7 The boundary line between Austin County
8 and Ft Bend County as described above
9 runs through and divides the original
10 leagues in grants as follows.

11 O'Haras Grant League

12 In Austin County 4606 Acs
13 In Ft Bend County 2822 Acs

14 O'Conner League

15 In Austin County 3510 Acres
16 In Ft Bend County 888 Acres

17 John McConnick, P. Shelby & Frezier League

18 In Austin County 3218 Acres
19 In Ft Bend County 1210 Acres

20 As the surveyors of Ft
21 Bend County has adapted a different creek
22 on point (12 Mile creek on point) as 16
23 mile creek on point, we make the following
24 statement in order to show why we believe
25 the creek above mentioned is the true 16
26 mile creek on point viz, 16 mile point
27 on 16 mile creek as above mentioned is the
28 head of a creek in a point of timber on the
29 old road from San Felipe to Richmond
30 at the edge of Brazos bottom, there were
31 3 creeks in said road designated respectively
32

1 raised a like mound and marked same "2
2 M" "M Co" & "Ft B Co" at 3902 was raised
3 a like mound in the N line of said Davis
4 league and South line of the O'Connell
5 league, 1320 was West from the S.E. corner
6 of the latter and mkd said mound "Chas
7 Davis league" and "O'Connell league" at
8 5703 was on 3 miles raised a like mound
9 and mkd same "Austin Co" and "Ft Bend
10 Co", at 7604 was on 4 miles raised a like
11 mound and mkd same "4 M" and "Austin
12 Co" & "Ft Bend Co" at 7804 was raised a
13 like mound in the North line of said
14 O'Connell league and South line of the
15 John Mc Cormick, P. Shelby & J.
16 Frezier league 1250 was from the N.E.
17 corner of the former and 1770 was from the
18 S.E. corner of the latter and mkd said
19 mound "O'Connell league" and "Mc Cormick
20 league" at 9505 was on 5 miles raised a
21 like mound and mkd same "5 M" & "Austin
22 County" & "Ft Bend County" at 9896 was cross
23 G.C. & S.F. Ry track at 9906 was strike head
24 of the East in main fork of 16 Mile creek,
25 thence down the same with its meanders
26 in a Northern direction to its forks where
27 we marked a Water Oak Ft B Co, & a do
28 A Co. Thence down said creek with its
29 meanders in a North Eastern direction to
30 its mouth in the Brazos river it being
31 1185 was above the lower N.E. corner of
32

1 State of Texas
2 Austin County
3
4 To the Honorable Com:
5 Missions Court of Austin County,
6

7 November Term 1887
8 In accordance to an order issued at the
9 May Term of your Hon Court I proceeded
10 on the 1st day of October 1887 assisted by
11 Surveyor M. M. Kewey to ascertain, run
12 and establish the boundary line between
13 Austin County and Ft Bend County.

14 I also notified the surveyor of Ft Bend
15 County, and he wrote to me on the 13th day
16 of October that he did not intend to appear,
17 Pursuant to Art 7105 describing the bound-
18 ary of Austin County, we proceeded to
19 the lower or S. W. corner of Gabriel Gale
20 tract in San Bernard, which is identified
21 by numerous citizens living in that section,
22 viz: Austin Gale and G. Gale sons of Gabriel
23 Gale who originally owned the land and resided
24 in it, O. G. Cannon, and others. It being also
25 the lower corner of the Charles Dair's league,
26 This corner does not seem to be disputed, thence
27 East at 280 was inter prairie at 1796
28 (1793) was to the S. E. corner of said Gale
29 tract, a cedar post 3ft high and 8" x 8" mark-
30 ed A. G. on the N. W. and F. P. C. on the S. E.
31 side. Thence N 1° E at 1901 was raised
32 a mound 2ft high and marked the same
"A. G." "A. G." x "F. P. C." at 3802 was on 2 Miles

1 The State of Texas In the Commissioners Court
2 County of Austin Special November Term 1887
3
4 On the 7th day of November 1887.

5
6 "On this day came up for the consideration of
7 the Court the Report of J. H. Macheuchl, County
8 Surveyor of Austin County of the survey made
9 by him of the boundary line between Austin
10 "Co. Fort Bend Counties in obedience to the
11 order of this Court made at the May Term
12 "A. D. 1887 thereof on to wit the 12th day of May
13 "1887 together with his supplemental report
14 thereto attached. And it appearing to the
15 Court from said report that said line was
16 run in accordance with law and with the
17 order of this Court, And that said report
18 shows the true boundary line between Austin
19 "Co. Fort Bend Counties, It is therefore con-
20 sidered by the Court that said report be and
21 the same is hereby approved, And that the
22 same be recorded in the Minutes of this Court
23 immediately following this order."

24 "And it is further ordered that a copy of said
25 report duly certified under the hand and seal
26 of the Clerk of this Court together with a
27 copy of this order also certified, be forwarded
28 to the County Commissioners Court of Fort Bend
29 Co. And that a certified copy of said report
30 be forwarded to the Commissioners of the General
31 "Land Office"
32

1
Boundary line
between the Counties
of
Austin,
of
Ft Bend.

Filed Nov. 21/87.

