

The report of G.S. Cumings County Surveyor defining the Compromise boundary line between Austin and Fort Bend Counties was this day approved by the Court and ordered to record as follows:

The State of Texas {  
County of Austin { : To the Commissioners Court of Austin County  
Texas. February Term A D 1891. S.R. Blake,  
County Judge:

In pursuance of an order made by your Court at its special December Term A D 1890, to wit: on the 9th day of December A D 1890 directing the County Surveyor of Austin County to lay off mark and designate according to law the division line between Austin County and Fort Bend County, basing the location of said division line upon an agreement entered into by said Austin and Fort Bend Counties, and further directing said County surveyor of Austin County to request the Co-operation of the County surveyor of said Fort Bend County in locating said line. I G.S. Cumings County Surveyor of Austin County have to report that after giving S.M. Farr, County surveyor of said Fort Bend County due notice by mail by sending him a copy of the order of survey and also a request to meet me and assist in establishing said line on the 2d day of February A.D. 1891, he answered expressing a willingness to do so but failed to meet me on the day set and after a full and complete examination of the material objects called for in the original field notes of the O'Connor league at its upper or N.W. corner, I proceeded to lay off establish and mark the division line between Austin and Fort Bend Counties according to the tenor and terms of said order and agreement as follows: Beginning at a point on the East bank of the main Bernard River established by M.M. Kenney surveyor, for the common corner of the O'Conner and Stephens leagues from which a dead water oak mkd V and two old hacks 24 inches in dia bears S 78° E 32 varas (very old marks) a sycamore tree 12 inches in dia mkd AC bears N 63 W 60 varas another sycamore tree 12 inches in dia mkd FBC. bears S 56 1/2 E. 16 varas (the two last being marked by me)



The Bernard River at this point running N 65 W. Thence I ran due East following a double marked line at 520 varas entered the edge of the prairie where I marked a pin oak tree AC & F.B.C. at 1901 varas set a cedar post mkd AC on north side and FBC on south side at 2900 varas passed center of Elm Slough at 3802 varas set a cedar post mkd A.C. on the north side and F.B.C. on the south side at 5703 varas set a cedar post mkd A.C. on north side and F.B.C. on south side at 6830 varas set a cedar post mkd A.C. on the north side and F.B.C. on the south side, this point being in the original division line between Austin and Fort Bend Counties Thence with said original line N 4° W at 1901 varas set a cedar post mkd A.C. on the west side and FBC on the East side at 2400 varas passed the center of the G.C.S. Fe R.R. at 2410 varas to a cedar telephone pole standing in the head of the S.E. prong of sixteen mile creek, marked AC & FBC. Thence down the meanders of said Creek to the forks of the same where a water oak is mkd AC and a Pecan tree is mkd FBC Thence continuing down the meanders of said Creek to a point where the same empties into the Brazos River. Surveyed February 2d A D 1891.

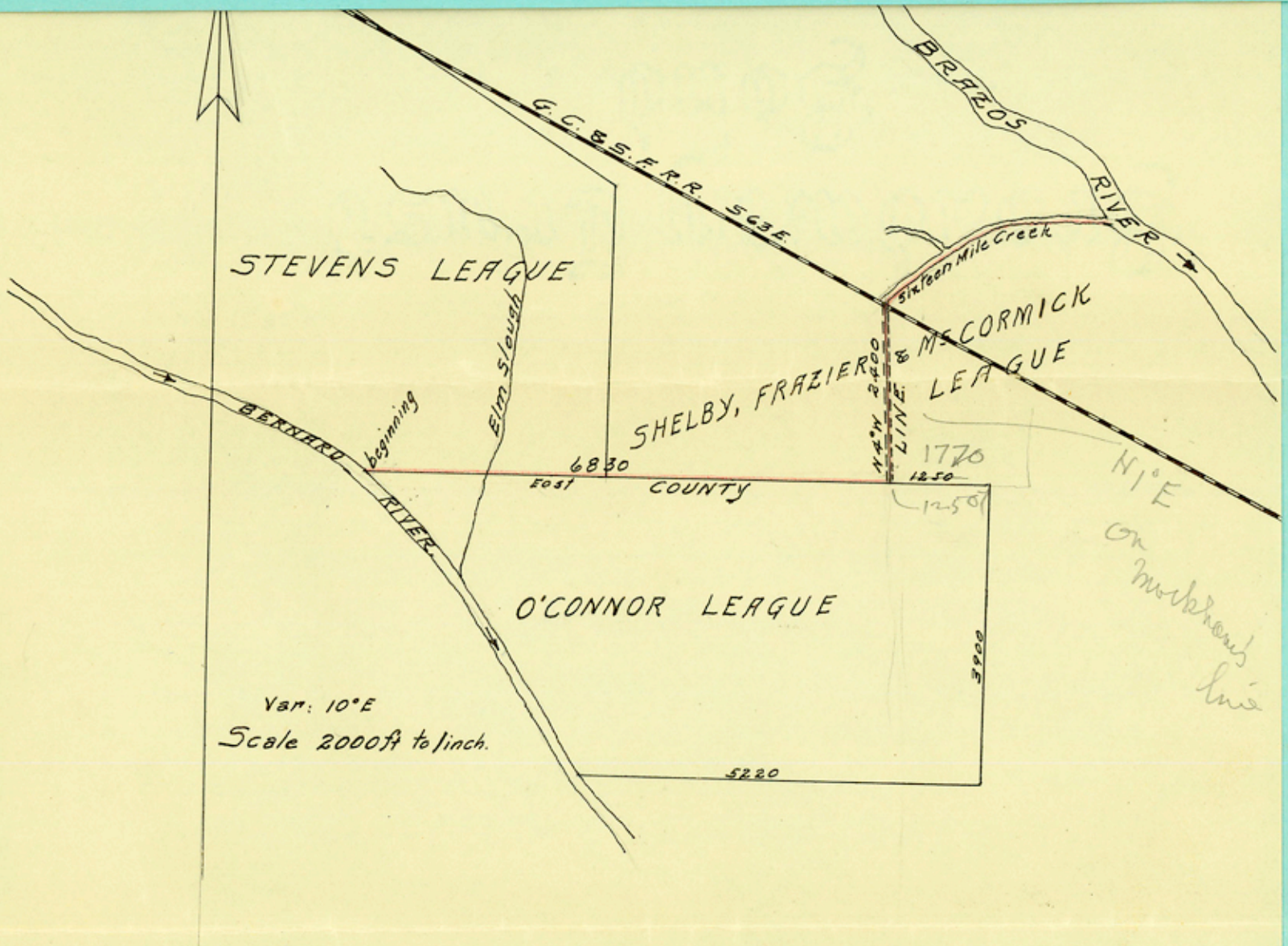
Wm Belt	⌋	
	:	chain men
A. Horn	⌋	
		G.S. Cumings, Co. Surveyor A.C.

I G.S. Cumings, County Surveyor of Austin County Texas do hereby certify that the above and foregoing survey was made by me out on the ground according to law on the date and with the chain men named duly qualified and that all the corners, lines and boundries of the same whether natural or artificial are truly and correctly described and set forth in the foregoing map and field notes.

Witness my hand this the 10th day of February A D 1891.

G.S. Cumings, Co. Surveyor A.C.





Copy of Plat attached to  
 report of County Surveyor on  
 file County Clerk's office, in  
 Austin County, Texas.



The State of Texas }  
                          : }  
County of Austin } }

We, the BELLVILLE ABSTRACT COMPANY, a corporation, hereby certify that the foregoing is a true and correct copy of the report of County Surveyor of Austin County, Texas, defining the Compromise boundary line between Austin and Fort Bend Counties, and the approval of same by Commissioners Court as the same appears of record in Vol. J pages 243-244 Commissioners Court Minutes, Austin County, Texas.

In Witness Whereof the BELLVILLE ABSTRACT COMPANY has caused its name to be signed and seal affixed at its office in the City of Bellville, Texas, this 22nd., day of September, A.D., 1931.

BELLVILLE ABSTRACT COMPANY

By



Secretary and Treasurer.



Austin Co Bdry Line

4)

~~3~~

1891

Austin - Ft. Bend  
County Line

Mr John W Paschett  
% Board Water Engineer - City  
April 1932

counter 50248