

RECEIVED

MAR 24 1973

- General Land Office

C E R T I F I C A T E

THE STATE OF TEXAS )

COUNTY OF BANDERA )

I, OLGA SCHMIDT, Clerk of the County Court of Bandera County, Texas, do hereby certify that the following is a true and correct copy of the ORDER passed by the Commissioners' Court of Bandera County, Texas, at the February Term of said Court, held on the 12th day of February, 1973:

"The Court approved the Plat establishing the Bandera-Kerr County Line as presented by Mr. Mickey White, with the firm of Corlett-Gray & Probst of Wichita County, Texas. The motion being made by Commissioner Adren Heisler, duly seconded by Commissioner Howell Keese, and which motion was voted on un-animously ."

TO CERTIFY WHICH WITNESS MY HAND AND SEAL OF OFFICE, this the 21st day of March, 1973.

*Olga Schmidt*  
Clerk County Court, Bandera County, Texas,  
and Ex-Officio Clerk of the Commissioners'  
Court of Bandera County, Texas.

THE STATE OF TEXAS )  
COUNTY OF BANDERA )  
OLGA SCHMIDT, Clerk of the County Court of Bandera County, Texas, do hereby certify that the following is a true and correct copy of the ORDER passed by the Commissioners' Court of Bandera County, Texas, at the February Term of said Court, held on the 12th day of February, 1973:  
"The Court approved the Plat establishing the Bandera-Kerr County Line as presented by Mr. Mickey White, with the firm of Corlett-Gray & Probst of Wichita County, Texas. The motion being made by Commissioner Adren Heisler, duly seconded by Commissioner Howell Keese, and which motion was voted on un-animously ."

county 50299

C E R T I F I C A T E

THE STATE OF TEXAS    )

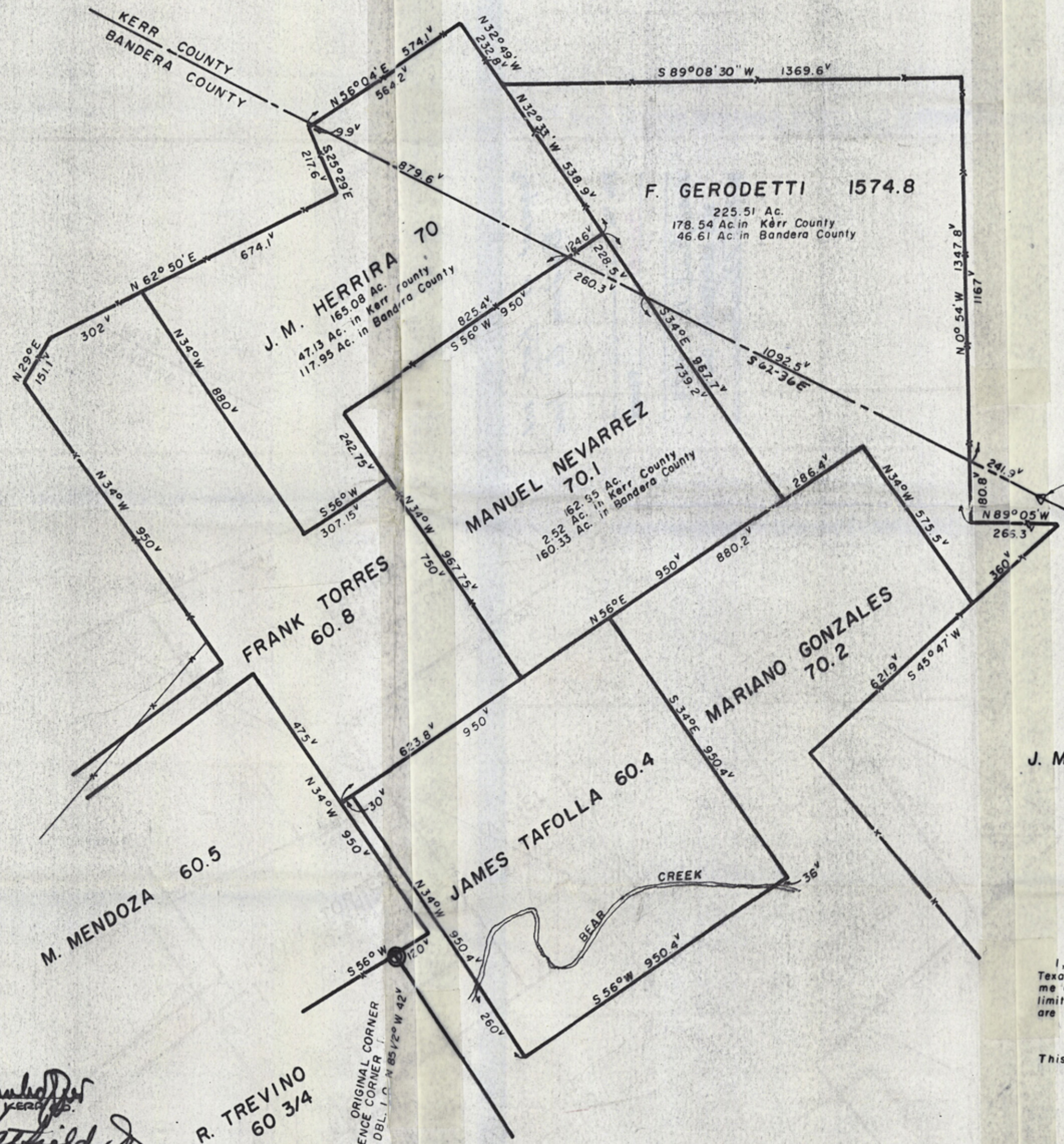
COUNTY OF BANDERA    )

I, OLGA SCHMIDT, County Clerk of Bandera County, Texas, do hereby certify that the attached plat of the Bandera-Kerr County Line is a true and correct copy of the plat which was approved by the Commissioners' Court at their regular term held on February 12, 1973, and which was filed for record in my office on March 20, 1973, in Volume 2, Page 23, of the Map & Plat Records of Bandera County, Texas.

GIVEN UNDER MY HAND AND SEAL OF OFFICE, this the 21st day of March, 1973.

*Olga Schmidt*

\_\_\_\_\_  
Clerk County Court, Bandera County, Texas.



APPROVED BY ORDER OF COMMISSIONERS COURT OF BANDERA COUNTY, THIS THE 12 DAY OF Feb. A.D. 1972, AND FILED FOR RECORD ON THE 26 DAY OF Mar. A.D. 1972 AT 3:00 O'CLOCK P.M. IN VOLUME 2 AT PAGE 23 OF MAP AND RECORDS OF BANDERA COUNTY, TEXAS.

1"=300 VRS.

LOCATION OF  
**KERR AND BANDERA COUNTY LINE**  
 THROUGH  
**J. M. HERRIRA 70, MANUEL NEVARREZ 70.1**  
**AND F. GERODETTI 1574.8 SURVEYS**

I, A. E. Probst, Jr. a Licensed State Land Surveyor of Wichita County, Texas do hereby certify that this map truly describes a survey made by me on the ground according to law in September 1972; that the limits, boundaries and corners, with the marks, natural and artificial, are truly described, just as I found them on the ground.

This the 16th day of September 1972

*A. E. Probst, Jr.*  
 A. E. Probst, Jr.  
 Licensed State Land Surveyor

**FILED**  
 AT \_\_\_\_\_ O'CLOCK \_\_\_\_\_ M  
Oct. 20, 19 72  
*Olga Schmidt*  
 COUNTY CLERK, BANDERA COUNTY  
 BY \_\_\_\_\_ DEPUTY

APPROVED: *Julius P. Hunsicker*  
 COUNTY JUDGE, KERR CO.  
*W. D. Hatfield, Jr.*  
 COUNTY JUDGE, BANDERA CO.

R. TREVINO  
 60 3/4

ORIGINAL CORNER  
 FENCE CORNER  
 DBL. I. C. N 88 1/2° W 42'

520

RECEIVED  
MAR 24 1973  
General Land Office

FILED  
COUNTY CLERK, BANDERA COUNTY  
MAR 24 1973  
SAN ANTONIO, TEXAS

APPROVED  
*[Signature]*  
COUNTY CLERK, BANDERA COUNTY

Segment of Kerr and  
Bandera Co. line

File No. 5  
Bandera County  
Filed April 11 1973  
BOB ARMSTRONG, Com'r  
By *[Signature]*

counter 50302

RECEIVED  
MAR 24 1973  
General Land Office

TO TRACTS REFERENCED TO BEING AS DEVOTED TO THE PUBLIC USE OF THE STATE OF TEXAS AND TO THE PUBLIC USE OF THE STATE OF TEXAS AND TO THE PUBLIC USE OF THE STATE OF TEXAS

KERR AND BANDERA COUNTY LINE  
AND E. CEDAR AT 1248 S. SURVEYS  
M. HERBIA TO  
MAMUEL HERBIA 1971

*[Signature]*