

~~14~~ 9 10

County Boundaries
Baylor - Knox & Foard
Counties

Filed June 13th 1927

J. H. Robison, Coun-
C.

Examined & Approved
July 7th 1927

J. H. Robison, Coun-
Clock

Contents-

- 1 Field Notes
- 2 Plat -
- 3 Copy Order Co. Court -

The State of Texas,)
County of Baylor,)

Field Notes of a Survey of West Boundary Line of Baylor County, Texas, and the East line of Knox and Foard Counties, Texas, in conformity with an order issued by the County Court of Baylor County, Texas, on the 24th day of March, A.D. 1927, and filed with the County Clerk of said Baylor County on the 24th day of March, A.D. 1927, by which order A.D. Kerr was employed by said Court to run and establish said County line as the law directs, a copy of which order was forwarded to the courts of Knox and Foard Counties for their action.

Now, therefore, I, A.D. Kerr, Co. Surveyor of Baylor Co., do hereby certify that in obedience to said order I did survey said West line of Baylor County, beginning at S.W. corner of Baylor and S.E. corner of Knox County on the 19th day April and no other surveyor appearing proceeded to survey said line in accordance with the following field notes:

Beginning at a stone monument about 8 by 10 inches and two feet high and marked "B" on N.E. side, K. on N.W. side, H. on S.W. side, and "T" on S.E. side, said stone being the established common corner of Baylor, Knox, Haskell and Foard Counties, whence mile stone No. 2 on the South line of Knox Co. bears West 3801.6 varas.

First Mile.

Beginning at a stone monument about 8 by 10 inches and two feet high marked "B" on NE side, "K" on N.W. side, "H" on S.W. side, and "T" on S.E. side. Said stone being the common corner of Baylor, Knox, Haskell and Throckmorton Counties, whence a mile stone No. 2 on North line of Haskell and South line of Knox Counties, bears West 3801.6 vrs.;

Thence North at 1733 vrs. a stone marked "K" on West side and on North line of Survey No. 3, H & T C R R Co., 770 vrs. East of its N.W. corner and 660 vrs. East of S.W. corner of Survey No. 4, H & T C R R Co., Cert. No. 10/336, at 1900.8 vrs. a stone monument 5 feet long set three feet in ground, and marked "K" on West side and "B" on East side, being the First Mile.

Second Mile.

Thence North 470 vrs. cross a branch, at 550 vrs. cross a second branch, course northeasterly, at 1733 vrs. cross line of said survey No. 4, 611 vrs. East of its N.W. corner and 1356 vrs. West of the S.W. corner of David Barlow Survey, and S.E. corner of Jacob Garner Survey, at 1894 vrs. cross a slough, at 1900.8 vrs. a stone monument marked K 2 on West side and B. 2 on East side, for second mile.

Third Mile.

Thence North 1900.8 vrs. a concrete monument on said Garner Survey marked K 3 on West side and B 3 on East side, for third mile.

Fourth Mile.

Thence North 1900.8 vrs. a concrete monument on said Garner Survey marked K 4 on West side and B 4 on East side, for fourth mile.

Fifth Mile.

Thence North at 883 vrs. cross east and west road, at 1559 vrs. cross a fence on Survey No. 61, Blk. No. 45, H & T C R R Co., at 1742.4 vrs. cross North line of Survey No. 61, at 1900.8 vrs. a concrete monument marked K 5 on West side and B 5 on East side for fifth mile.

Sixth Mile.

Thence North 1742.3 vrs. cross North line of Survey No. 62, and S. line of Survey No. 63, H & T C R R Co., 864 vrs. east of their common West corner and 1036.8 vrs. West of their common East corner, at 1900.8 vrs. a boisd' arc post in farm marked K 6 and B 6 for sixth mile.

Seventh Mile.

Thence North 397.7 vrs. enter W.V.R.R. reservation, at 424 vrs. cross S. line of Survey No. 10, Block 1, D & W R R Co., at 436 vrs. set a concrete monument marked KC on West side and BC on East side, at 450

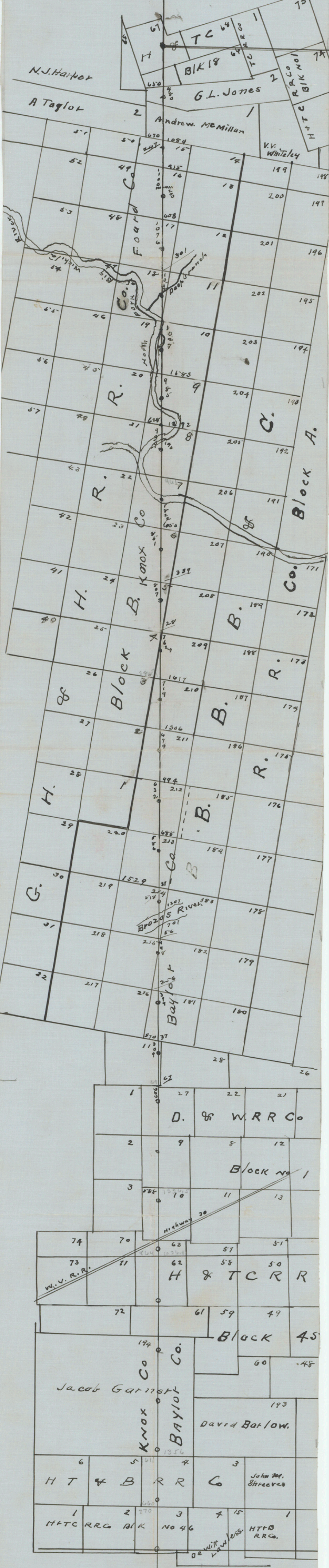
Map of West line of Baylor and East line of Knox and Foard Counties

A. D. Kerr Co. Surveyor
Lienuea Land Surveyor

Filed in General Land Office
June 13th 1927

J. F. Robison, Comm. C.

Wilbarger Co



Haskell Co

Throckmorton Co

~~14~~ 210

(3)

Baylor - Knox - Foard
- County Line -

Copy - Order County
Court - Baylor Co -

Filed June 13th 1927

J. T. Robison, Court

COUNTY OF BAYLOR.....
THE STATE OF TEXAS.....

I, J. T. Robison, Clerk of the County Court in and for
said County and State hereby certify that the above and foregoing
pages contain a true and correct copy of an order of the County
Court of Baylor County, authorizing A. D. Kern, County Surveyor
of Baylor County to survey the West Line of Baylor County, as the
same appears of record in Vol. 4, Page 333, Minutes of County Court.

Witness my hand and seal of office this 10th day
of June, A. D. 1927.

J. T. Robison

Clerk County Court, Baylor County, Texas.

County Judge, Baylor County, Texas.
J. T. Sp. Clair.

J. T. St. Clair.

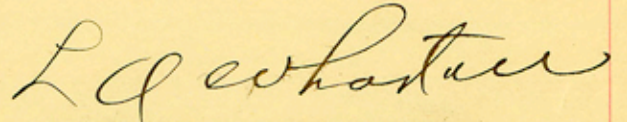
County Judge, Baylor County, Texas.

THE STATE OF TEXAS....)

County of Baylor.....)

I, L. O. Wharton, Clerk of the County Court in and for said County and State hereby certify that the above and foregoing pages contain a true and correct copy of an order of the County Court of Baylor County, authorizing A. D. Kerr, County Surveyor of Baylor County to survey the West line of Baylor County, as the same appears of record in Vol. 4, Page 353, Minutes of County Court.
Given under my hand and seal of office this 10th. day

of June, A. D. 1927.



Clerk County Court, Baylor County, Texas.

Thursday, March 24th, A. D. 1927.

Court convened pursuant to adjournment on this the 24th. day of March A. D. 1927, with the same officers present and presiding, as on day of adjournment and the following proceedings were had, to-wit:

March 24th, A. D. 1927.

Order for the Survey of the West boundary line of Baylor County:

WHEREAS, it appearing to the Court that the West boundary line of Baylor County and the East boundary line of Knox County and the East boundary line of Foard County so far as it is affected by the line of Baylor County has never been definitely ^{established} and approved, and that it is expedient and necessary that said line be established in conformity with instructions and recommendations of the Honorable J. T. Robinson, land Commissioner of Texas.

It is therefore ordered by the Court which is now in regular session, that A. D. Kerr, County surveyor of Baylor County and who is a competent and practical surveyor, and who is also a licensed land surveyor of the State of Texas, be and is hereby appointed under Art. 1582 Revised Civil Statutes of Texas to proceed to make a true and correct survey of said land and he shall make or cause to be made accurate field notes of the line so surveyed and deliver said field notes to this court as the law directs.

The said A. D. Kerr is directed to begin said survey at the S. W. corner of Baylor County, the same being the S. E. corner of Knox County, on April the 19th, 1927 and survey same to the S. E. corner of Foard County, which is the N. E. corner of Knox County and he shall begin the survey of the line between Baylor and Foard Counties on the 7th. day of June, 1927, beginning at the S. E. corner of Foard County, and continuing North to the North West corner of Baylor County.

It is further ordered by this Court that a copy of this order be sent to the County Court of both Knox and Foard Counties.

Twenty-Seventh Mile.

Thence North through breaks all the way, at 1076.1 vrs cross north line of Survey No. 17, Blk. B, 608 vrs. West of its N.E. corner, at 1900.8 vrs. a concrete monument, marked F C on West side and B 27 on East side, whence a slab stone bears East $7\frac{1}{2}$ vrs. marked X.

Twenty-Eighth Mile.

Thence North at about 200 vrs. leave breaks, at 1100 vrs. cross North line of Survey No. 16, Blk. B, 915 vrs. West of its N.E. corner, at 1900.8 vrs. a concrete monument, marked F C on West side and B 28 on East side, for the twenty eighth mile.

Twenty-Ninth Mile.

Thence North at 247 vrs. pass 670 vrs. S. 80-30' E. from the Original S.W. corner of the A. McMillan Survey, and 1084 vrs. N. 80-30' W. of the N.E. corner of Survey No. 15, Blk. B, and at 1900.8 vrs. a concrete monument, marked F C on West side and B 29 on East side, for the twenty ninth mile.

Thirtieth Mile.

Thence North at 480 vrs. cross the South line of Survey No. 66, Blk. 18, 650 vrs. N. $82\frac{1}{2}$ deg. E. of its S.W. corner, at 1923 vrs. to the N.W. corner of Baylor County, and S.W. corner of Wilbarger County, as established in 1888, a large sand stone rock three feet wide and two feet high, facing North and South, and situated in the valley of South Beaver Creek, marked N E---N W on South side and H---W on North side.

Surveyed ^K April 19th to ^B 23rd, 1927. and June 7th to 9th 1927.

E.O. Tolson,
Randall Cooper, Chain Carriers.

The State of Texas,)
County of Baylor,) I, A.D. Kerr, a licensed land surveyor for the State of Texas, hereby certify that the foregoing surveys of the West line of Baylor County, and the East line of Knox County is at all points on a direct line from the common South corner of said County to the established N.W. corner of said Baylor County, that the chainmen were sworn, and that connections were made to all known established corners as indicated in these field notes, and that same are correct to the best of my knowledge and ability.

Witness my hand at Seymour, Texas, this the 10 day of

June A.D. 1927.

A. D. Kerr
Licensed Land Surveyor.

Approved in open court this the 10 day of June A.D. 1927.

& J. P. G. Clair
County Judge of Baylor County,
T e x a s.

The State of Texas)
County of Baylor) I, L.O. Wharton Clerk County Court in and for said County and State, hereby certify that the above and foregoing pages contain a true and correct copy of the Field Notes of the West Line of Baylor County, Texas, as the same appears on file in my office,
Given under my hand and seal of said Court, this 10th day of June
A.D. 1927/

L. O. Wharton
Clerk County Court, Baylor County, Texas.

Seventeenth Mile.

Thence North at 674 vrs. cross North line of Survey No. 211, 1306 vrs. West of its N.E. corner and 594 vrs. East of its N.E. corner measured from the original N.E. corner of Sur. No. 84, Blk. A, at 1900.8 vrs. a stone monument on side of hill, marked K 17 and B 17 for the seventeenth mile.

Eighteenth Mile.

Thence North at 719 vrs. cross a fence in middle of Soap Creek, and on North line of Survey No. 210, 284 vrs. East of its N.W. corner, and 1617 vrs. West of its N.E. corner, at 1900.8 vrs. a concrete monument marked K 18 and B 18 for the eighteenth mile.

Nineteenth Mile.

Thence North at 762.9 vrs. cross a fence on North line of Survey No. 4, Blk. B. for G H & H R R Co., 28 vrs. West of its N.E. corner, at 1900.8 vrs. a concrete monument in valley of Big Wichita River for the Nineteenth mile.

Twentieth Mile.

Thence North at 807 vrs. cross South line of Survey No. 6, said Blk. B, 339 vrs. West of its N.E. corner, at 1900.8 vrs. a concrete monument on East side of road, marked K 20 and B 20, for the twentieth mile.

Twenty-First Mile.

Thence North at 851.5 vrs. cross North line of Survey No. 6, 650 vrs. West of its N.E. corner, at 1822 vrs. to South bank of Big Wichita River, at 1900.8 vrs. a corner in bed of river, for twenty first mile.

Twenty-Second Mile.

Thence North 50 vrs. to North bank of river, and at 100 vrs. set concrete monument marked K 21 and B 21, at 895 vrs. cross the North line of Survey No. 7, Blk. B, 961 vrs. West of its N.E. corner, at 1150 vrs. a tank dam, at 1900.8 vrs. a concrete monument marked K 22 and B 22 for the twenty second mile.

Twenty-Third Mile.

Thence North at 32 vrs. a fence, at 140 vrs. in North Fork of Big Wichita River, at 939.7 vrs. cross North line of Survey No. 8, Blk. B, 1272 vrs. West of its N.E. corner, at 1440 vrs. in said North Fork the second time, at 1540 vrs. enter level valley, at 1900.8 vrs. a concrete monument on South bank of old river bed, marked F C on West side and B 23 on East side, for the twenty third mile.

Twenty Fourth Mile.

Thence North at 346 vrs. leave old channel of river bed near its mouth, and enter heavy timber, at 985 vrs. cross North line of Survey No. 9, G H & H Ry. Co. 1583 vrs. West of its N.E. corner, at 1900.8 vrs. a concrete monument, marked F.C. on West side and B. 24 on East side, for the twenty fourth mile.

Twenty-Fifth Mile.

Thence North at 1027 vrs. pass the N.W. corner of Survey No. 10, Blk. B, for G H & H Ry. Co., at 1900.8 vrs. a concrete monument on bank of deep branch, marked F C on West side and B 25 on East side, for the twenty fifth mile.

Twenty-Sixth Mile.

Thence North crossing said deep branch twice, at 1052 vrs. pass 301 vrs. West of N.E. corner of Survey No. 18, Blk. B, at 1900.8 vrs. a concrete monument, marked F C on West side and B 26 on East side, for the twenty sixth mile.

vrs. to center of highway No. 30, at 1900.8 vrs. a stone monument, in field marked K Co. 7M and B. Co. 7M on East side.

Eighth Mile.

Thence North 523 vrs. a concrete monument on North line of said Survey No. 10, 588 vrs. East of its N.W. corner and 1236.5 vrs. West of a stone set for its N.E. corner, being the common corner of 8, 9, 10 and 11, Blk. 1, D & W R R Co., at about 1500 vrs. enter breaks, at 1900.8 vrs. set a concrete monument marked K 8 and B 8 for the eighth mile.

Ninth Mile.

Thence North at 1275 vrs. at 1450 vrs. and at 1600 vrs. cross and recross Lake Creek, at 1900.8 vrs. a concrete monument marked K 9 and B 9 for the ninth mile.

Tenth Mile.

Thence North at 142.5 vrs. a fence, at 606 vrs. cross N. line of Survey No. 27, Blk. 1, D & W R R Co., and S. line of Survey No. 11, Blk. 2, D & W R R Co., 69 vrs. West of their common East corner, at 1514 vrs. a fence, at 1900.8 vrs. a boisd' arc post in field, for the tenth mile.

Eleventh Mile.

Thence North at 309.4 vrs. cross North line of said No. 11, 37 vrs. West of its N.E. corner, and on South line of Section No. 181, Blk. A, for B B B & C R R Co. 570 vrs. South 80-49' East of its S.W. corner, 1330.8 vrs. N. 80-49' W. of its S.E. corner at 1900.8 vrs. a boisd' arc post marked K 11 and B 11 set in field, for the eleventh mile.

Twelfth Mile.

Thence North 377 vrs. set a concrete monument on South line of Survey No. 182, Blk. A, Marked K C on West side and B C on East side, 256 vrs. East of its S.W. corner and at 1900.8 vrs. set a mesquite post for the twelfth mile.

Thirteenth Mile.

Thence North at 100 vrs. set a concrete monument on fence line, course N. 9-11' E. marked K C on West side and B C on East side, at 448.7 vrs. cross North line of Survey No. 215, 56 vrs. West of its N.E. corner, at 707 vrs. enter and at 1207 vrs. cross Brazos River, at 1900.8 vrs. a boisd' arc post for thirteenth mile.

Fourteenth Mile.

Thence North at 518.2 vrs. to center of lane on S. line of Sec. No. 213, Blk. A, 371 vrs. West of its S.E. corner, at 1900.8 vrs. a stone set in pasture marked K 14 for the fourteenth mile.

Fifteenth Mile.

Thence North 586 vrs. to North line of said Section No. 213, set a concrete monument, marked KC and BC, said monument being 685 vrs. North 80-49' West of NE corner of said Survey No. 213 and 859 vrs. North 80-49' West of SE corner of Survey No. 212, as patented, at 1591 vrs. pass 62 vrs. West of N.E. corner of S.W. $\frac{1}{4}$ of said Survey No. 212 as surveyed and patented, at 1900.8 vrs. a concrete monument for the fifteenth mile.

Sixteenth Mile.

Thence North at 632.4 vrs. to center of highway No. 24 on North line of Survey No. 212, 994 vrs. West of its N.E. corner, at 691 vrs. a concrete monument marked K 16 and B 16, for the sixteenth mile.

4/5
Confidential

June 28, 1927.

Mr. A. B. Kerr,
County Surveyor,
Seymour, Texas.

Dear Sir:

This is to advise that field notes of the West line of Baylor County as recently run by you under orders of the county court of Baylor County were received and filed June 18, 1927.

The abstract of land surveys perfected by this line where necessary will be corrected, but these corrections will not appear in the Printed Volume of Abstracts before some time next year.

affected

Yours very truly,

Commissioner.

Clarke/M

*See also letter to
A. B. Kerr - 7/7/27*