

No. 84

Boundary lines between  
the County of  
Bee  
and the Counties of  
Roanes, San Patricio  
and Live Oak

See inclosed reports for  
dates of file

See endorsements on re-  
ports

See San Patricio  
Oak & Bee

counter 5044

To the Hon. Commissioners Court of  
San Patricio County,

In obedience to an order of your Hon.  
Court at its February Term 1881. Approving  
the order of Survey of County Boundary between  
the County of Bee and the aforesaid County  
of San Patricio Made and passed by the Hon.  
Commissioners Court of Bee County at its  
November 1880. I on the 9<sup>th</sup> day of March  
1881. Proceeded to the Mouth of Papalotte  
Creek and there met R. W. Fenner County  
Surveyor of Bee County as aforesaid and in  
accordance with instructions from the Gen.  
Land Office Commissioner of Texas under date  
of Sept 27<sup>th</sup> 1880 to the County Judge of  
said Bee County. I proceeded jointly with the  
County Surveyor of said County to run and  
mark the boundary line between Bee and  
San Patricio Counties by the courses and  
distances as given by P. S. Haggy in a  
former Survey of said line made by said  
Haggy in September 1865. Commencing  
at the Mouth of the Papalotte Creek we  
ran three miles S 36° W and established the  
S. E. Corner of Bee County as aforesaid  
Thence we ran N 78° 40' W Fifteen miles  
and 76 rods as given by Haggy and not  
finding the N. W. corner of this County, which  
is the S. W. corner of Bee County, as given

MKe<sup>o</sup> 14 in granjira thicket - at 27.924 - vs bed  
of Big Bayou at 28.515 - vs a post MKe<sup>o</sup> 15 at  
28.839. vs a triangular post set for the corner  
of Ben Saw Patricio, and Live Oak Counties, MKe<sup>o</sup>  
SW. Cor. Ben Co on one side and NW corner SP  
Co. on another side whence a Mesquite tree MKe<sup>o</sup>  
7 has S 12° W 71 $\frac{1}{2}$ °. vs - and a point - on the S.W.  
bdy line of the upper M.G. Frazier survey bears  
S 57. 0 89. vs from which point the S.W. corner  
of said upper survey for M.G. Frazier, bears  
S 58° 0. 1265 Varas -

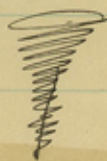
Work Completed May - 1881

James O. Gaffney -

R. J. Smith - Chairman.

"all line trees on East line are MKe<sup>o</sup> with six  
notches - on South line with four notches -"

The State of Texas  
County of Ben



I R. W. Fenner surveyor of Ben  
Co. do hereby Certify that the foregoing, survey was  
made according to law - that the work was  
actually done in the field, that the marks corners  
and boundaries natural and artificial are cor-  
rectly described in the above field notes, and  
accompanying Plat - and are recorded in my  
office in Book B pages 356 + 357. Witness my Signature  
this 23<sup>rd</sup> day of May 1881.

R. W. Fenner  
Surveyor Ben County Tex

#8

Ball Co. Bdry line

a post-Mk<sup>a</sup> 4 at 8144. vs the upper line of Benjamin Dales League grant. whence its NW corner on Popalote Creek bears North  $93^{\circ}8\frac{1}{2}'$ . vs at 8304. vs. bed of Dails Creek at 9605. vs a post-Mk<sup>a</sup> 5 at 9706 vs bed of Popalote Creek and the mouth of Tant-hollow at 9805. vs. bears bed of Tant-hollow at 10.905. vs. Cross a drain, near its head at 11406. vs a post-Mk<sup>a</sup> 6 at  $13.269\frac{1}{2}$ . vs. the west-bdy line of a League grant in the name of Hugh O. Bryan, whence the S.W. corner of same bears South  $142^{\circ}4\frac{1}{2}'$  vs at 13.307. vs post-Mark<sup>a</sup> 7 at 14.723. vs. the bed of Popalote Creek, and crossing same and running parallel with it at 15.008. vs. a double Live Oak Mk<sup>a</sup> four notches, fore and aft at 15.208. vs a post-Mark<sup>a</sup> 8 near the west-<sup>Bank</sup> of Popalote, Creek, at 16.221. vs the west-line of a survey in the name of William Quinn, whence the N.W. corner of same bears  $N 26^{\circ} E. 328$  vs at 17.109. vs a post-Mk<sup>a</sup> 9 at 19.010. vs a post-Mk<sup>a</sup> 10. at <sup>21.010</sup>~~21.010~~ vs a post-Mark<sup>a</sup> 11. at 21.786. vs Skidmore & Sullivan's pasture fence. whence the Popalote Creek. bears  $N 33\frac{1}{2}^{\circ} E 1005$ . vs. at 22.812. vs a post-Mk<sup>a</sup> 12. at 23.737. vs the <sup>old</sup> Beville and San Patricio road a post-on west side of road Mk<sup>a</sup> thus <sup>B. Co. / SP Co.</sup> at 24.713 vs. post-Mk<sup>a</sup> 13. at 26.614. vs post-

counter 50978

#14

= Field Notes =

Beginning at the mouth of the Popalote Creek  
whence a hackberry-tree 12 inches in diameter  
marked  $\nabla$  (old) which tree serves as the N. E. Cor  
of a league and labor grant in the name of  
Victor Loupy, bears  $S 54^{\circ} 15' E. 898\frac{1}{2}$  vars, and  
a Live Oak 14 inches in diameter marked six  
notches fore and aft" and <sup>Bu</sup> Co. on north side  
and <sup>SP</sup> Co. on south side, bears  $S 36^{\circ} W. 79$  vars.  
Thence  $S 36^{\circ} W$  at 630 vars, a drain at 1200 vars  
the prairie at 1300 vars, enter Chapulte at 1909.  
vars - a mesquite post MKd 1 at 2501 vars.  
Castillos pasture fence, marked with six notches  
at 3802 vars, a Live Oak post MKd 2 at 5312  
vs the S.E. Margin of a pond at 5422 vars the  
Buville and Rockport Road. Course,  $S 56^{\circ} E.$  at  
5703 vs. the South East-Corner of Bu Co, a  
post and mound, the post marked SE Corner  
Bu Co. on one side and SP Co on another side.  
Thence North  $77^{\circ} 40'$  west at 1905 vars a post  
marked 1 at 3802 vs a post MKd 2 whence a  
lone Live Oak-tree standing in a pond and  
known as the "Carlisle" tree, bears  $N 48^{\circ} 15' W 86\frac{1}{2}$   
vs at 4078 - vs. the Buville and Corpus Christi roads  
a MKd post on west-side of same at 5162 vs  
the south point, of Live Oak-trees extending from  
Popalote Creek, at 5703 vs. a post MKd 3 at  
7493 vs enter Mundscks pasture, at 7604 vs

SE on

Map showing the natural objects, lines and  
corners of surveys, crossings and near this line.

Very Respectfully  
R. W. Fenner  
Co Surveyor of De Co

Buville May 23<sup>d</sup> 1881.

finding the S.W. Corner of Bee Co., as given in his field notes, or any marks or line made by him - the line for the time was discontinued -

Afterwards, on the - day of April 1881 I went to a point known to be on the line between Bee and Live Oak Counties, and Comptroller said line to a point called for in Hagg's, field notes as the "Road leading from Groves to the Aransas" and as called for in said field notes Comd 1628. 00. and set a stake for the end of the line - This Stake, or corner, I found to be  $496'$  or North west of the line, surveyed by Mr Goffney and myself as the bdy. line between our respective Counties - after conferring with you, Hon. Court. I again met Mr Goffney - the County Suror of San. Patricio, Co. - on the 3<sup>rd</sup> day of May 1881. at the S.W. Cor. of Bee Co. as established by us in our former Surv. - and with said Suror ran North  $77^{\circ}.40'$  west fifteen miles, and three hundred, and twenty-four (28.839), varas to the Stake above, refused to which Stake, is  $S 27^{\circ} E$  1628. varas, from a point on the road leading from Groves to the Aransas - and there established a corner for the Counties of Bee - San Patricio, and Live Oak -

Attached to this I give you the field notes of this line, and as a part of this report, a

#21

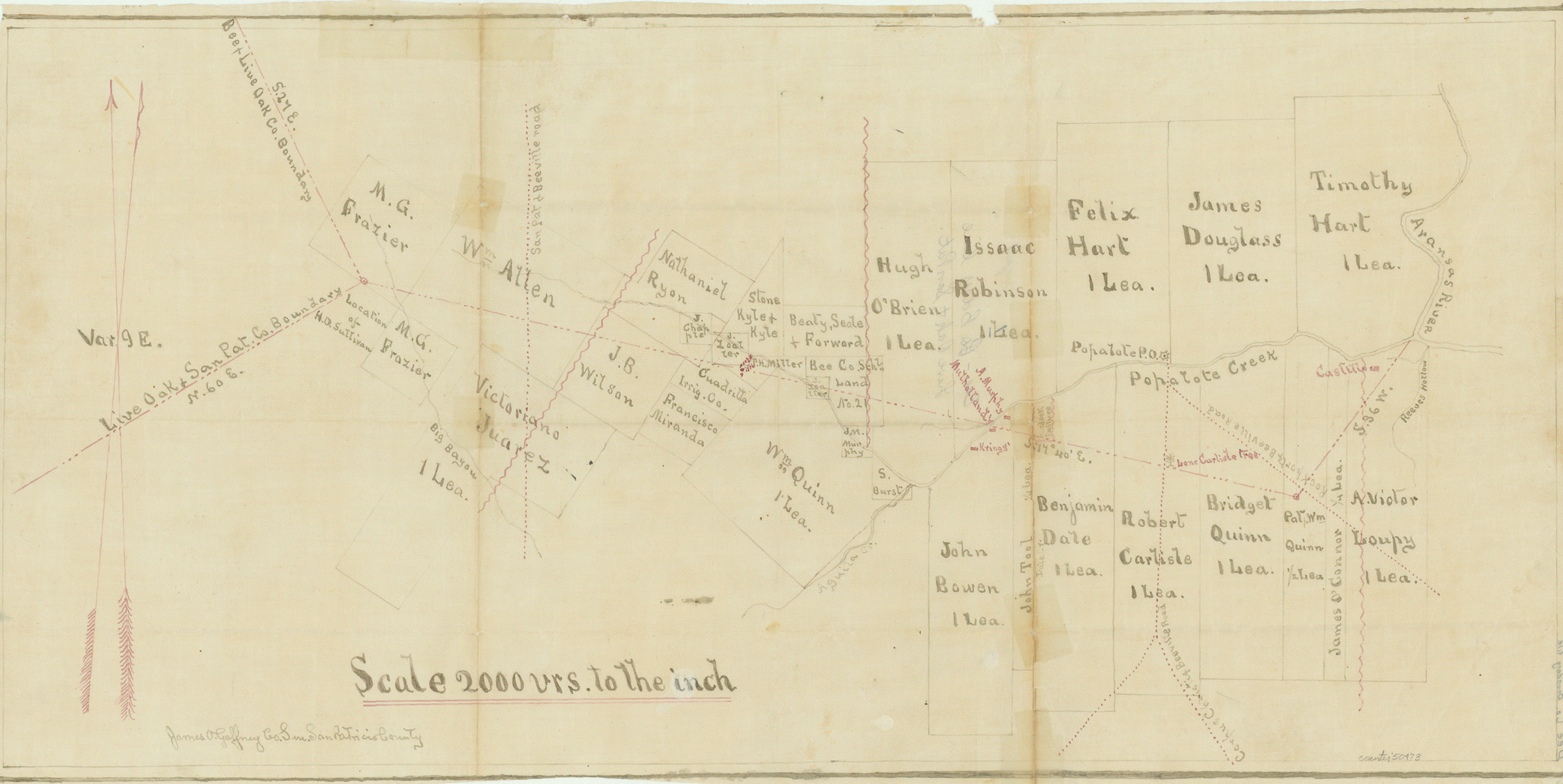
In Commission Court Bu Co  
The State of Texas Inm. Special Term - 1881  
County of Bu R. W. Fennor, Surveyor  
of Bu County. Herewith  
presents his Report, and field Notes of County  
line between Bu and San Patricio Counties,  
which are as follows, to wit:

To the Hon County Court  
of Bu County Texas

In compliance with an  
order of your Hon Court made at your Nov  
term 1880, <sup>and approved by the Hon Court of San Patricio Co at its</sup> I met Mr James O'Gaffney Co Sur  
of San Patricio Co, at the mouth of Popalote  
Creek on the 7<sup>th</sup> day of March 1881. and in  
accordance with instructions from Comr General  
Land Office, given under date of September  
27<sup>th</sup> 1880. to the County Judge of Bu County,  
proceeded, jointly with the Surveyor of San  
Patricio Co to run the boundary line between  
Bu & San Patricio Counties, by the bearings,  
and distances given by P. S. Hagg, in a  
former survey of said line made by him  
in September 1860.

Beginning at the mouth of the Popalote  
Creek, we run South  $36^{\circ}$  West - three (3) miles,  
and established the South East-Corner of Bu  
County - Thence North  $78^{\circ}.40'$  West - fifteen miles,  
and seven hundred and seventy-six varas  
(29,276) varas) as given by Hagg - and not.





Beehive Oak Co. Boundary  
S 27° E.

San Pat & Beeville road

Var 9 E.

Live Oak & San Pat. Co. Boundary  
N. 60° E.  
Location of  
H.D. Sullivan

M.G. Frazier

Wm Allen

Nathaniel Ryon

Hugh O'Brien

Isaac Robinson

Felix Hart  
1 Lea.

James Douglass  
1 Lea.

Timothy Hart  
1 Lea.

Arkansas River

M.G. Frazier

Victoriano Juarez

J.B. Wilson

Francisco Miranda

Wm Quinn  
1 Lea.

Stone Kyle & Kyle

Bealy, Seale & Forward

1 Lea.

Popalote P.O.

Popalote Creek

Castilla

S. 36° W.

Reeves Hollow

Big Bayou  
1 Lea.

Benjamin Dale  
1 Lea.

John Bowen  
1 Lea.

Robert Carlisle  
1 Lea.

Bridget Quinn  
1 Lea.

Pat. Wm Quinn  
1/2 Lea.

A. Victor Loupy  
1 Lea.

James O'Connor  
1/4 Lea.

Scale 2000 vrs. to the inch

James O. Gaffney Co. Sur. San Patricio County

counter 50173

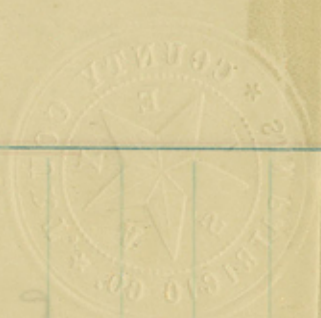
Bee Co. Boundary file

Certified Copy  
 of Map, Field  
 Notes and Reports  
 of Survey Boundary  
 Line between the  
 Counties of Bee  
 and San Patricio

Filed June 30<sup>th</sup> 1881.

Rhoads Fisher  
 Clerk.

only signed by Surveyor  
 San Pat. Co.



BEE CO. Bdry. line #8

The State of Texas  
County of San Patricio. I, J. Alexander  
McClain County clerk of the aforesaid  
County, hereby certify that the above  
and foregoing <sup>Survey</sup> Report <sup>and</sup> map, also hereto attached  
are true and correct copies of the  
originals now on file and of record  
in my office. And I further certify  
that at a Special Term of the County  
Court held in June ad 1881, the  
original Report of Survey <sup>and</sup> Fee  
Notes accompanying same and  
were accepted by said Court approved  
Confirmed and ratified in all things  
and the same ordered to be filed and  
Recorded by the County Clerk

In testimony of all of which,  
I hereunto set my official Seal and  
Signature at office in San  
Patricio the 24th day of  
June ad 1881,

J. W. McClain  
Co. Clerk, &c.



Post 12 at 23737 vrs Beenville and San  
 Patricio road a Post on West side marked  
<sup>BEE CO.</sup> / <sup>S.P.</sup> Co. at 24713 vrs Post marked 13. at 26614  
 vrs Post marked 14 in Grandero Thicket  
 at 27924 vrs head of Big Bayou at 27421  
 vrs the East line of a Survey of 10839840  
 Square varas in name of Mr. G. Frasier where  
 the South Corner of said Survey stands  
 S 32 1/2 W 578 vrs. at 28575 vrs Post marked  
 15. at 28839 vrs set a triangular Post  
 for the Common corner of Bee  
 Live Oak and San Patricio Counties  
 Marked on one side <sup>S.W. COR</sup> BEE CO on another side  
<sup>N.W. COR</sup> S.P. CO. and on the remaining side <sup>COR</sup> L.O. CO  
 and from which a Mesquit marked  
 X vrs S 12 1/2 W 71 4/5 vrs.

Surveyed March 8th, 9th  
 10th, 11th + May 3rd, 4th, 5th, 1881.  
 R. J. Smith  
 John Walker Chain Carriers

upper line of old grant in name of Ben Dale where its N.W. corner on Popalotte Creek stands North  $938\frac{1}{2}$  vrs. at 8304 vrs head of Dales Creek at 9505 vrs Post marked 5 at 9705 vrs head of Popalotte Creek, and the mouth of Tank Hollow following in bed of said hollow at 9805 vrs leave said hollow pour left, at 10905 vrs head of a drain near its head, at 11406 vrs a Post marked 6 at 13269  $\frac{1}{2}$  vrs Luke Starts Pasture fence and West line of an old grant in name of Hugh O'Brien from which its S.W. corner on Popalotte Creek bears South  $1424\frac{1}{2}$  vrs. at 13307 vrs a Post marked 7 at 14723 vrs head of Popalotte Creek Crossing it and running Parallel with it at 15008 vrs a double Line Oak marked fore and aft with four Nicks at 15208 vrs Mesquit Post marked 8 on West bank of the Popalotte at 16221 vrs West line of Wm. Quinn grant from which its N.W. corner on Popalotte bears N  $44^{\circ}$  E 328 vrs. at 17109 vrs Post marked 9 from which S.E. corner of Joseph Zoaller 160 acre Survey bears N  $57\frac{3}{4}$  E  $179\frac{1}{2}$  vrs at 19010 vrs Post marked 10. at 20911 vrs Post marked 11. at 21786 vrs Sullivan and Skidmores Pasture fence 1005 vrs. S  $32\frac{1}{2}$  W. from the Popalotte creek, at 22852 vrs

Inches in diameter Marked  $\nabla$  hrs  $\text{E } 64^{\circ} \frac{1}{4}$   
 to 898  $\frac{1}{2}$  hrs which tree is said to be regarded  
 as the N. E. corner of Armand Victor Lopy  
 Surney and a Live Oak 14 inches in diameter  
 marked Six Notches fore and aft and  $\frac{\text{BEE}}{\text{CO}}$  on  
 both side and  $\frac{\text{S.P.}}{\text{CO}}$  on the South side  
 bears  $\text{E } 36^{\circ} \text{ N } 79$  hrs. Thence  $\text{S } 36^{\circ}$   
 W at 630 hrs a ravine at 1200 hrs the Prairie  
 at 1300 hrs enter Chaparral at 1909 hrs  
 Mesquit Post marked 1. at 2501 hrs Mrs.  
 Castillo's Pasture fence marked Six notches  
 at 3802 hrs Live Oak Post marked 2. at  
 5312 hrs. the East margin of a Pond  
 at 5722 hrs the Beeville and Rockport  
 Road running  $\text{S } 55^{\circ} \text{ E.}$  at 5703 hrs set  
 Post in ground for the S. E. corner of Bee  
 County said Post is marked  $\frac{\text{SE. COR.}}{\text{BEE CO}}$  on one  
 side and  $\frac{\text{S.P.}}{\text{CO}}$  on the other side.

Thence  $\text{N } 77^{\circ} 40' \text{ W}$  at 1905 hrs Mesquit  
 Post marked 1. at 3802 hrs Mesquit Post  
 marked 2. from which lone Live Oak in  
 Pond known as the Charles tree bears  
 $\text{N } 48^{\circ} \frac{1}{4} \text{ W } 86^{\circ} \frac{1}{2}$  hrs. at 4078 hrs Beeville  
 and Corpus Christi road set Post marked  
 $\frac{\text{BEE. CO}}{\text{CO}} \frac{\text{S.P.}}{\text{CO}}$  at 5762 hrs south edge of a Point  
 of Live Oak timber at 5703 hrs Post marked  
 3 at 7493 hrs enter Murdock's Pasture  
 at 7604 hrs Post marked 4. at 8144 hrs

County as established by us in our  
Previous Survey and with said Surveyor  
Proceeded to run  $N 77^{\circ} 40' W$  Fifteen miles  
and 324 Varas to and intersecting the line  
between Bee and Live Oak Counties at the  
Stake above referred to 1628 brs  $S 27^{\circ} E$  from  
Grover's road and thereby at that place  
establishing the common corner for Bee  
Live Oak and San Patricio Counties  
Accompanying this report I submit  
Field notes and Map showing the lines  
run, natural and artificial marks  
and objects and corners made and  
lines of surveys crossed all of which  
I respectfully submit for the consideration  
and approval of your Hon. body.

Respectfully,

James A. Gaffney,

State of Texas, Co. Sur. San Patricio  
San Patricio County, Field notes of a  
Survey of the boundary lines between  
the aforesaid County and the County of  
Bee according to the decrees of the Hon  
Commissioners Courts of the said Counties  
of Bee and San Patricio and the  
instructions received from the Com. Gen. Land Office  
beginning at the junction or confluence  
of the Arkansas river and Popalotte  
Creek, from which a Hackberry tree

in the original Survey or rather the surveys  
 of Bee County, not agreeing to corner found  
 the Survey of the line for the time was discon-  
 -tinued until said Bee County Surveyor would  
 satisfy himself by running a portion of the  
 boundary line between Bee and Live Oak  
 Counties down to this point. Afterwards  
 according to said agreement said Surveyor  
 in the month of April went to a Point  
 known to be on said Boundary line between  
 Bee and Live Oak Counties and coursed  
 said line to a point called for in Haggy's  
 Field Notes as the road leading from  
 James W. Grovers to the Arkansas and  
 Chained as called for in the aforesaid Haggy  
 Field notes S 27 E 1628 vrs and set a stake  
 for the corner which stake or rather the line  
 and distance 1628 vrs. lacked 495 vrs of  
 reaching the true line run by me and  
 him previously. Having calculated the  
 Traverse back from the lines and Connec-  
 -tions been me found that the true Course of  
 the boundary line between our respective  
 Counties was N 77° 40' W from the corner  
 three miles S 36 W from the mouth of the  
 Papalotte Creek and according to agreement  
 I again met on May 4<sup>th</sup> 1881 the Surveyor  
 of Bee County at the S. E. corner of Bee



It is ordered by the Court, that the above, and foregoing, Report and field notes of R. W. Finner County Surveyor, be and are hereby approved. This 13<sup>th</sup> day of June 1881. and said line as run is accepted as the boundary line between Bee & San Patricio Counties.

#16

(220) Certificate of True Copy.

Sold by M. STRICKLAND, Stationer, Galveston.

THE STATE OF TEXAS,

County of Bee

I, R. C. Cede

Clerk of the County Court

of Bee County, Texas, do hereby certify that the foregoing is a true and

correct copy of the original proceedings of the Court of Bee Co. as shown on minutes of said Court pages - 38, 39, 40 & 41 now on file in said Court.

Given under my Hand, and the Seal of said Court, at office in Beeville

this the 30<sup>th</sup> day of November A. D. 1881

R. C. Cede, County Clerk.

By \_\_\_\_\_ Deputy.

#17

9/6/500  
21270  
10176

#18  
Bee to San Patricio Co  
line

Signed by Surveyor of  
Bee Co. & approved by  
County Court of same  
Part.

counter 50480