

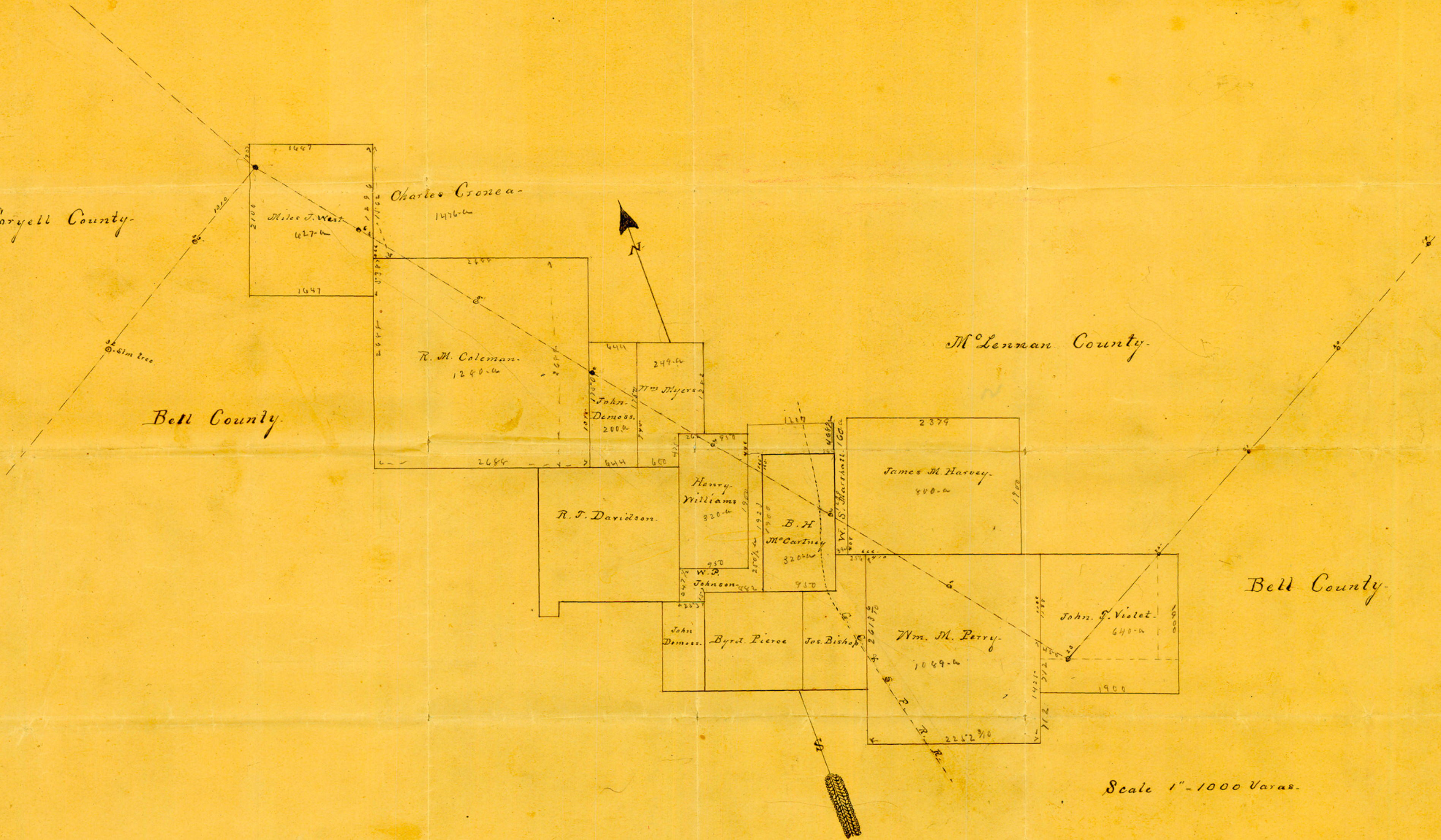
Coryell County

Bell County

Charles Crona-
1476-6

M'Lennan County

Bell County



Scale 1" = 1000 Varas.

Bell Co Bdry - 5 Line 2

5

Boundary Line!
Bell & McLennan Counties
Feb. 12 1906

Abstract corrected
in Vol. 29

counter 50186

Said R. M. Coleman Survey-

Respectfully submitted

Oct. 23. 1905

Fee \$35⁰⁰

J. W. Turner, Co. Surveyor
Bell County Texas-

Subscribed and Sworn to before me by Jno. W. Turner
Oct 23. 1905

W. R. Rylander Clerk
By W. Lee Secy

The State of Texas, J. W. Rylander, Clerk
County of Bell } County Court, and Ex-officio
Clerk Comis Court Bell County, Texas, do hereby
certify that the above and foregoing is a true
and correct copy of the Record of the Survey
of Jno. W. Turner, County Surveyor of Bell County
of the Line between Bell & McLennan Counties
All of which more appears of record in
Vol. J. at pages 352 and 353, of the Minutes
of the Comis Court of Bell County Texas.

Sworn under my hand & seal of Court, this
Jan'y 5, 1906.

W. R. Rylander Co. Clerk
Ex-officio Clerk Comis
Court Bell Co. Texas
By W. Lee Secy

The State of Texas } To The Hon. Commissioners Court
County of Bell } of Bell County Texas.

In obedience to an order of The Hon. Commissioners Court of Bell County made and entered at the Sept term 1905, requiring me to resurvey and retrace the line between Bell & McLennan Counties as made by compromise & agreement between said Counties and run and marked out by Ed. T. Rickett, Surveyor, in 1881. & connect said line with the corners of the surveys through which it passes. I hereby respectfully report that I have made said survey as directed and submit the following report of my work. I began at the S. W. corner of McLennan County as made by agreement, 23 miles S 60° W from the upper corner of the L. B. Franks league, on the west bank of the Brazos River. @ 40 vrs. S 60° W. from a branch that runs eastward through the farm formerly owned by John W. Clark, on the John J. Violet survey. Thence N 39° 30' W. at 450 vrs. crossed the west line of said Violet survey. 1188 vrs. S 19° W. from its N. W. corner at one mile + 830 vrs. crossed the north line of the Wm M. Perry survey. 410 vrs. S 71° E. from its N. W. corner. at two miles + 186 vrs. to the center line of the G. C. & N. F. Ry. at two miles + 1110 vrs. crossed the west line of the B. A. McCartney survey. 165 vrs. S 19° W. from its N. W. corner. at three miles + 1188 vrs. crossed the east line of John Demoss 200 acre survey 945 vrs. N 19° E. from its S. E. corner at four miles + 77 vrs. crossed the east line of the R. M. Coleman survey. 1375 vrs. N 19° E. from its S. E. corner. at five miles + 1656 vrs. crossed the east line of Miles J. West survey. 266 vrs. N 19° E. from the N. W. corner of R. M. Coleman survey. 6 miles + 1650 vrs. to S. E. corner of Coryell County, in Anderson's field, at a point, 307 vrs. S 19° W. @ 83 1/2 vrs. S 71° E. from the N. W. corner of said West survey. and one mile + 1310 vrs. N 60° E. from the Elm tree, near Fannell Johnson's Ranch house, marked as the 32 mile point in Bell & Coryell County line. I find that the R. M. Coleman survey is largely excessive, & has a strip of land about 23 vrs. in width along its south side which properly belongs to the surveys lying south of and adjoining it, but is held by the parties owning on

✓ Bell Co Bdry Line 2 5
Bell & McLannan
Co Line

Filed in Geol. Land Office
February 12, 1906.

Abstract corrected
in Vol. 29.

R.C. Oct 1941
W.S.

Filed Oct 23, 1905
W.C. Rylander
Co. Clerk
By W. J. Lee
Sgt

See plat

100 Ram