

No 4

Boundary Line
Between

Blanco
Burnet

at
Llano Cos.

Examined approved
and applied
Dec 22/88

Abstract corrected
sic Copy for'd Comp^r
Dec 24/88

Reamont

Copy

The State of Texas
County of Blanco

To the Honorable Commissioners Court

Having been appointed by Your Honorable Court at its February Term 1887 to meet the Surveyor or Commissioners of Llano county for the purpose of running and establishing the boundary line between Llano and Blanco counties, I have the honor to submit the following report and field notes of said line

By agreement I met Captain William Kyle, county surveyor of Llano county at the mouth of Sandy Creek in Llano county on the 22nd day of August 1887. The corner of Llano and Blanco county described as: "five miles south of the mouth of Sandy" not being currently established and accepted by the two counties, we commenced our labors by establishing this corner, using for measuring a one hundred feet Curley steel tape. Running south from the mouth of Sandy Creek 26,400 feet = 9,500 ft = 5 miles made a stand on North bank of Peoan creek, this being too close to the creek and in danger of being washed away, made a witness corner, 44 feet = 23.8 Varas North of this corner on bank of Peoan creek by erecting a stand 2 feet high when P.O. clear inches in diameter br N 44° E 38 feet dist. a S. 14 inches in diam. br N 42° E 54 feet 3 inches dist. both bearing trees mks $\frac{1}{H}$

Both surveyors accepted the beginning point "Mouth of Sandy Creek" established by measuring from the North to the South bank of said creek at the mouth, or entrance into the Colorado River. The distance from bank to bank was found to be 464 feet = 167.2 V., the centre at 232 feet, P.S.V. was taken for point of departure.

From this point a Hackberry tree 18 inches in diameter, standing on North bank of Sandy br. due North 287 feet = 103.6 Varas dist. and a Peoan tree 57 inches in diameter br. N 3° E 43 Varas dist. from the Hackberry tree first described Both trees are marked \bar{X}

A "cross" and a "hack" above and below the cross.

P. 1 of 5

NW corner of Blanco county bearing S 84 E 1889 1/2
dist.

The distance between NW corner of H. H. Reed surv.
and West line of Hackey survey No 188 is found on the
ground locally in excess.

Length of South line of Reed survey 3088 Varas distance
found on Ground 4102 1/2 = 1014 Varas in excess.

P. T. Lefferty

County Surveyor Blanco Co.

Geo. Kyle

County Surveyor Llano Co.

It may be necessary to add an explanation to the field notes of the boundary line between the counties of Lawrence and Blaine.

Field notes and plat show only a difference of 39 1/2 in nearly ten miles, from the East boundary line of survey No 89 of C. W. Gallagher - West to West boundary line of survey No 188 for T. H. Gackey, between the actual distance found by measurement and the field notes.

A discrepancy is found between J. Taylor survey No 187 and Titus Morton survey No 153. Line and fence of survey for C. P. Hayes and survey No 2 made for Julia - note R. R. Co. met. Corner survey found on map, has disappeared on the ground.

Of the Titus Morton survey No 153 NW and SW corners are found, a wire fence running along West boundary line and connecting both corners. Measured distance and found length of line 2995 in place of 2888 Varas. Position of Quick survey does not agree with position given on map, a corner is found S 25 1/2° South of county line, which was supposed to be the SE corner of Gackey survey, and the different fences run to and from it.

Following the line running West from this corner, it is found to run Northward 658 Varas, and the supposed SW corner of the T. Gackey survey is 658 Varas North of the SE corner and only 240° South of the county line 200° West and 90° North. From this corner a corner is made for the Regis Mercer survey 170° South of county line and fences run to and from it.

It is evident that the original and correct corners of the Quick survey have disappeared, and the corners substituted are placed in wrong positions.

The SW corner of the D. A. Reed survey No 189 is found North of county line, the corner made

The State of Texas }
 County of Blanco } I W P Summy clerk of the
 District Court in and for Blanco County Texas
 do hereby certify that the foregoing is a true and
 correct copy of the field notes and survey of the
 line between Blanco and Llano Counties as made
 and surveyed by P F Appell surveyor of Blanco
 County and W M Kyle surveyor of Llano County
 the original being now on file in my office
 Given under my hand and the seal of
 said Court at Blanco this 21st day of
 September A D 1888

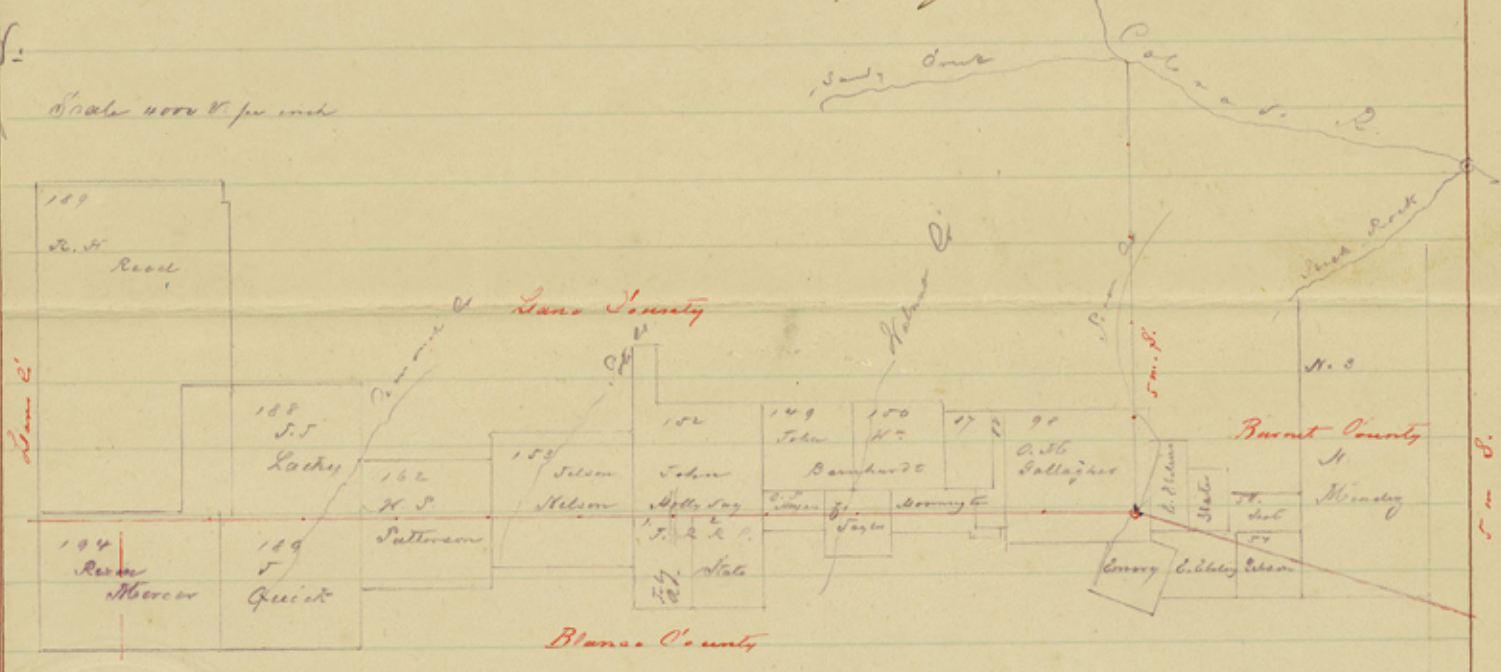
W P Summy
 Clerk C C Blanco Co Texas

the same as used in running Lines of Burnett and
Blanco & Burnett county line in October 1886.

Some trees marked with a "braye" and a hack above
and below braye.

"Right trees" or "Fore" apt trees size permitting, are marked
B & L on opposite sides, or Blazed when too small
to mark the letters

Chain Carriers Joseph King Junior
Richard Collins of Blanco County
T. H. Anderson
H. M. Gray of Law county.



Respectfully submitted

Blanco September 15th
A. S. 1887

S. P. J. Appelt
County Surveyor Blanco Co.

J. W. Kyle County Surveyor of Law county hereby certify
that the foregoing report, with the field notes and plat
contained therein, is correct

Wm. Kyle
County Surveyor Law County

B. 4 of 5

whence Live Oak mks L B brs $S 20^{\circ} E$, $S 2\frac{1}{2}^{\circ} E$ 141 feet dist. A double Live Oak mks L B brs $S 23^{\circ} E$ 175 feet dist.

At 8 Miles 250 feet = 90.1 V^s a Branch

At 8 Miles 1030 feet = 371.2 V^s a Branch

At 8 Miles 2109 feet = 760 V^s crossed West line of H. P. Patterson survey No 162 - 1180 Varas South of NW corner.

At 8 Miles 4600 feet 1657.6 Varas Gmanshe Creek

At 9 Miles erected Stone Mound two feet high whence $S 13^{\circ} E$ 13 inches in diameter brs. $S 0^{\circ} 15' E$ 95 $\frac{1}{2}$ feet dist mks B L

At 10 Miles erected Stone Mound two feet high whence Forked Live Oak 30 inches in diameter brs. $S 11^{\circ} W$ 184 $\frac{1}{2}$ feet dist marked L B

At 10 Miles 5766 feet = 1859 Varas West from corner made 5 miles South from Mouth of Sandy Creek erected Stone Mound for NW corner of Braun County.

This Stone Mound is two feet high, W. Post Oak 10 inches in diameter brs $S 4^{\circ} 8\frac{1}{2} W$ 9 $\frac{3}{4}$ V^s dist. A Live Oak 12 inches in diameter brs $N 29^{\circ} 24 E$ 57 $\frac{1}{2}$ V^s: both are marked B

This corner is 800 Varas East from centre of Cold Creek

SW corner of survey No 189 made for B. H. Reed brs $N 84^{\circ} W$ 1889 Varas dist.

Bearing trees are marked B South of line L Posts of line. When only one suitable bearing tree was found, it was marked L B.

Stone Mounds are two feet high with L B engraved and figures denoting the number of miles from the beginning corner

Survey completed September 2nd 1887. Variation 9 $^{\circ}$ 52' 6"

X At 4 miles 4310 feet 1553 Varas 147 Varas North of NW corner of survey No. 2 and NE corner of survey No. 1 Indianola R.R. Co.

At 5 miles 5 feet erected Stone Mound two feet high. The 5 mile corner falling into the Fredericksburg & Burnet Road erected as before stated Stone Mound 5 feet West of it, on West side of Fredericksburg Road

From this Mound a Mesquite tree N 55 E 55 feet dist a group of Live Oaks five in number, one marked L
tree N 56 E 6 1/2 feet dist.

At 5 miles 850 feet - 306.3 Varas crossed Marrow Shallow

At 5 miles 2331 feet - 840 Varas crossed East line of survey No. 153 made for Tilton Morton 1803 Varas South

X of NE corner of said survey and 147 Varas North of NW corner of survey No. 1 made for Indianola R.R. Co.

At 6 miles erected Stone Mound 2 feet high whence Live Oak 18 inches in diameter tree S 45 E 123 1/2 feet dist. marked B an other Live Oak marked L 24 inches in diameter tree N 40 E 91 1/2 feet dist.

At 6 miles 4400 feet - 1555.6 V. Poto Creek

At 6 miles 4800 feet - 1729.7 V. Ravine

X At 6 miles 5050 feet - 1819.8 V. crossed West boundary line of Tilton Morton survey No. 153 - 1803 Varas South of NW corner and 1192 Varas North of SW corner of this survey. Found East and West line of this survey 105 V. in excess.

At 7 miles erected Stone Mound two feet high whence P.O. marked B 30 inches in diameter tree S 34 E 93 feet dist; an other P.O. 24 inches in diameter marked L tree N 14 W 102 feet dist.

At 7 miles 1000 feet - 360.4 Varas marked a large boulder of Granite BL, county line running between the letters L & B

L. Crownover's house base S 42 E from this point.

At 8 miles erected Stone Mound two feet high

North from SW corner of C. M. Gallagher survey No 98.

At 1 mile 1478 Varas crossed West line of Harrimore survey 3400. North from SW corner of said Harrimore survey.

At 1 mile 5250 feet = 1889.2 Varas, Branch, cross NW

At 2 miles erected Stone Mound two feet high on West bank of Branch, whence Live Oak ten inches in diameter mks L on NW 61° E 8 1/2 feet dist.

At 2 miles 3832 feet = 1380.90% crossed West boundary line of Harrington survey No 82, 570 Varas South of NW corner of said J. H. Harrington survey No 82 to NE corner of J. Taylor survey No 157

At 3 miles set Measurite post 3 feet high in centre of Stone Mound, whence a mesquite tree 24 inches in diameter mks BL on NW 86 feet dist.

At 3 miles 925 feet = 332.3.0% crossed Walnut creek

At 3 miles 1810 feet = 648.0% steep bluff.

At 3 miles 1868 feet = 673.1 Varas crossed Walnut Creek

At 3 miles 825 Varas West boundary line of J. Taylor survey, crossed 5700% South of NW corner of said survey

At 4 miles erected Stone Mound two feet high surrounding Twin Post oak. The Eastern Post oak is marked L on North side; the Western Post oak is marked B on South side. From this Twin oak a Post oak mks L on NW 1/2 E 12 feet dist, another Post oak mks B on NW 1/4 W 23 feet dist.

At 4 miles 235 feet = 84.7 Varas crossed fence running North from SW corner of survey made for W. Hayes to NW corner of survey made for D. Bates 1470 North of NE corner made for survey No 2 T. J. J. (State Sect.)

close to Stone mound. A Post Oak 12 inches in diameter
marked I hrs N $19\frac{1}{2}$ E 8 feet dist.

At 2 miles 1244 $\frac{1}{2}$ V $\frac{1}{2}$ crossed West line of survey No 54

At 2 2/4 Varas South of NW corner of survey No 54

At 2 miles 3954 feet = 1424 $\frac{1}{4}$ Varas and 199 Varas South
of SE corner of States survey

At 3 miles created Stone mound two feet high whence
Live Oak 24 inches in diam. mks I hrs S $82\frac{1}{2}$ E $29\frac{1}{2}$ V $\frac{1}{2}$
dist. a Post Oak 30 inches in diam. hrs S $35\frac{1}{2}$ E 52 Varas
marked B

At 3 miles 235 feet = 84 $\frac{3}{4}$ V $\frac{1}{2}$ crossed South boundary line of
T. A. States survey

At 3 miles 577 V $\frac{1}{2}$ and 1818 Varas North of SW corner of T. A. States
and East line of survey, crossed West boundary line of T. A.
States survey and East boundary line of C. Ebeling
survey

At 3 miles 3560 feet = 1282.9 Varas crossed West line of C.
Ebeling survey S. East boundary line of C. W. Callagher
survey No 98 - 3758 Varas North of SW corner of C. Ebeling
survey

At 3 miles 4430 feet = 1596.4 Varas Pevan Oak

At 3 miles 4467 feet = 1609 $\frac{1}{4}$ V $\frac{1}{2}$ Stone Mound 5 Miles
South from mouth of Sandy Creek. From this mound a
windup corner, stand 66 feet due North is erected 2 feet high, whence
P.D. eleven inches in diam hrs N $77\frac{1}{2}$ E 38 feet, a S. fourteen
inches in diameter hrs N $42\frac{1}{2}$ E 54 feet six inches dist both
marked B

Shenoe West

at 5208 feet = 1875 Varas Ravine

at 5200 feet = 1900 V $\frac{1}{2}$ a 1 mile created Stone mound two
feet high, whence P.D. mks I hrs N $65\frac{1}{2}$ W 14 feet dist
a Black Jack mks B hrs S $30\frac{1}{2}$ W 18 feet dist.

At 1 mile 2428 feet = 875 Varas crossed West boundary line of survey
No 98 made for Chas. W. Callagher 340 Varas North of SE corner
of survey No 88 made for T. Harriamore, and 196 Varas

Having now established this corner five miles South of the mouth of Sandy creek and having run a random line from this point to the SE corner of Adams county, established by the surveyors of Adams and Burnett counties in the month of June A. D. 1886, and having ascertained that the true line between these two points is a line running $N 71^{\circ} 30'$ West, we proceeded to run, mark and establish the boundary line between the counties of Adams and Blanco, both surveyors agreeing thereto, of which line the following field notes and plat are a true and correct representation

To wit:

Beginning at the SE corner of Adams county as established by survey of Adams and Burnett county line in June 1886. at a Stone Mound 5 miles South of Shick Rock Creek (mouth of Shick Rock Creek) whence a R. brs $S 63^{\circ} 14' W 50^{\circ}$ dist a so brs $S 65^{\circ} W 75$ Varas dist.

Thence $N 71^{\circ} 30'$ West 20307 feet = 3 Miles 1600 $\frac{1}{4}$ V.

At 2579 feet = 929 V. crossed West line of T. A. Warlin survey 1576 Varas North of a Worms of said survey.

At 5280 feet = 1 Mile erected Stone Mound two feet high whence Live Oak 14 inches in diameter brs $N 14^{\circ} W 5$ feet dist. a so place to Stone Mound brs North both bearing trees are marked L.B.

At 1 Mile 5700 feet = 1333.3 Varas centre of Shick Rock Creek

At 1 Mile 4805 feet = 1731.5 Varas crossed West line of Nicholas Mendez survey No 3 $S 71^{\circ} W$ South of NE corner survey No 57 for T. A. Gibson

At 2 miles erected Stone Mound two feet high whence a R. 14 inches in diameter marked B brs South

4

8

1888

Sub notes of Boundary

between

Stano Co

Blanco County

Filed Sept 20th 1888.

Examined, approved and
applied
Dec 22nd 1888

Abstract corrected and
Copy forid Comptroller
Dec^r 24th 1888

Beaumont

N