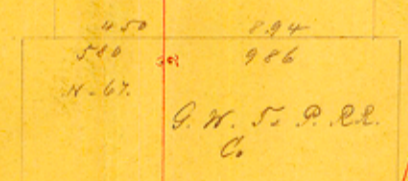
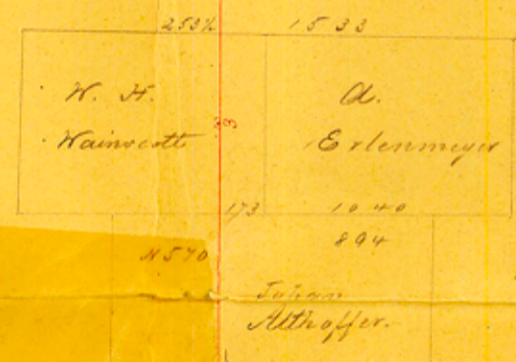
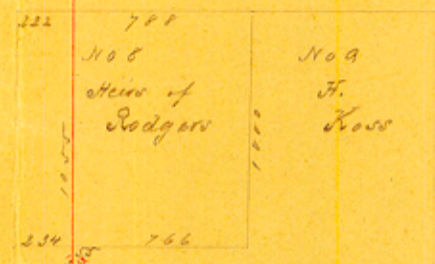


Bullhead County

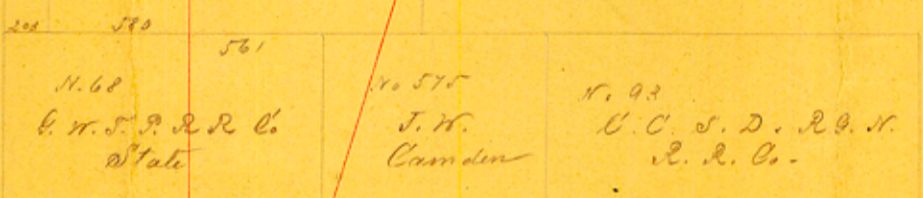
Blanco County

N. 4

Monica Joseph Burrows
N. 1. C. C.



No. 81
Leona
Irrigation
Agriculture Association



No. 82
State

N 1060
C. T. H. C.
R. R. Co.

Sub. S. C. S. W. B.

Kendall County

Blanco County

N. 1. C. C.

J. J. Appell
Co. Surv.

cont. 50335

N. 129
G. S. Titman

N. 200
T. J. R.
Seat

N. 101
G. W. F. H.

N. 231
A. B. Colman

N. 257
W. H. Walker

N. 77
Ramm

N. 72

J. A. Fisher

N. 129

Spencer

Tack

N. 128

H. H.

Tack

Old Fredericksburg — Double Horn Road

N. 322
F. Eckhardt

N. 129

H. J. David

1818

N. 130

Ed. Holden

N. 131

Geo. Freeman

N. 2

W.

Dease

N. 1 187

Geo. H. Bragale

M. J. Burman

Permanence

- Klamath County -

N. 185

B. H.
Reed

N. 194

Regina
Harrow

N. 198

John
Quirk

N. 161
Quirk

Gillespie County

Blanco County

N. 193

J. P.
Borden

N. 190

E. Crispin

N. 157
A. F.
Armstrong

W. 5000
S. 5000

Granite Bluff

N. 192

Thos.
Quirk

N. 192

Acres of
Thos. Quirk

N. 592

Abate
Cassilas

N. 463

J. L.
Wade

No 4.

5/

9

1889

Sketches showing
County b'dy line be-
tween the Counties of
Blanca
&
Gillespie

Filed May 27/89.
