

1877

N^o 10

4
1

Blanco County
Field notes of
County line

Field notes of line between
Blanco & Llano Cos.

field notes of line not signed
but a note of explanation
signed by Watson supposed
to be Secretary of Blanco

counter 50576

Blanco May 23^d 1878

Hon J J Cross
Austin Texas.

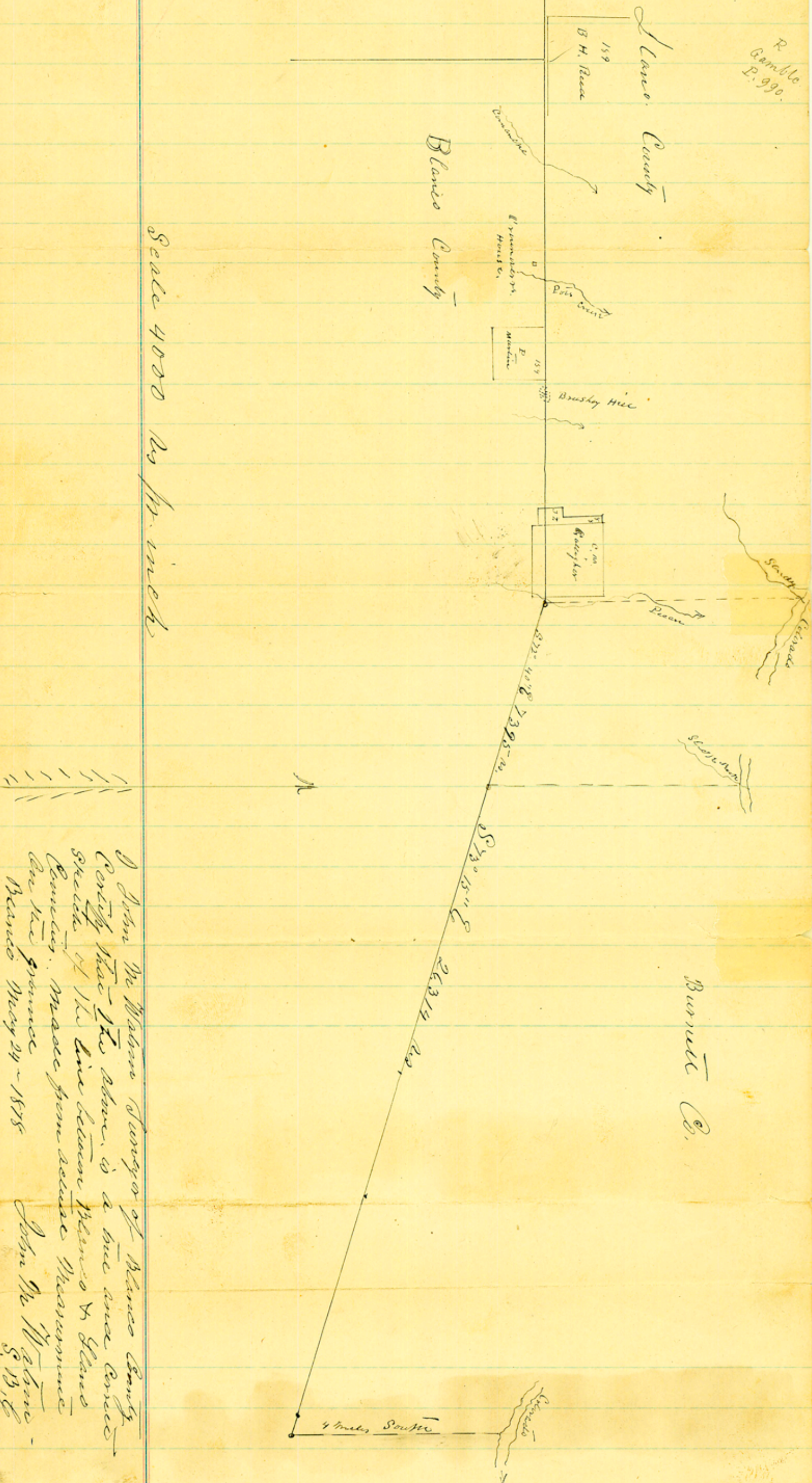
Dear Sir

Herewith enclosed
please find Piece of County line — in
July 1874. I, in Connection with The Surveyor
of Llano County run & established this
line, I made my report, and returned
The Piece notes to Our County Court. — They
were recorded in Clerks Office, but it
appears They were never sent to the
Land Office, and were therefore burnt, when
Our Court House burned up. I hapened to
still have the notes in my Office (as taken
on the field) and send them. — Thinking
They might be of use in Compiling Maps
for Blanco County.

Very Respectfully
John M Watson
Surveyor of Blanco Co

Gillespie County

Scale 4000 to 1 inch



I John M. Watson Surveyor of Blanco County
 Certify that the above is a true and correct
 sketch of the line between Gillespie & Blanco
 Counties. Made from actual measurements
 on the ground
 Blanco May 24 - 1878
 John M. Watson
 S. B. C.

Field notes of Survey of County line between
 Blanco & Gillespie Counties

Beginning on the South boundary line of Gillespie at
 a Stone Mound lying 1750 Paces S 89° E from the
 S E Corner of Survey No 189 in the name of
 B. H. Reed from which a S. C. 12 in marked
 T to N 54° W 147 is another S. C. 18 in marked B
 to S 75° E 33 is to B. D. marked G to S 9° W 47 m.
 Thence E. at 4000 is Comanches Creek 8000 is about
 475 - is due North of Sam Crowder's house
 8500 is Pot Creek. 10400 is The N W Corner of
 Survey No 154 in the name of P. Martin. at 12500
 N E Corner of No 154. - 12600 is top of Brushy Hill
 14000 is a Creek. 18000 is about 200 is North
 of Sam Richards' House, at 18100 The East
 boundary line of No 88. made for John Lawrence and
 the West line of No. in name of G. M. Gallagher,
 537 is North from the S W Corner of Said
 Gallagher Survey. - 20712 is Pecan Creek.
 20857 is to a Stone Mound lying due South
 5 Miles from the Mouth of Sandy, from
 which a S. C. 15 in to S 70° W 31 m, and P. C.
 12 in to S 80° E 20 is to a mark X

I John M. Watson Surveyor of Blanco County. Certify
 that the Survey designated by the foregoing plat & field
 notes was accurately made by me, and that limits, distances
 and Corners are truly described therein. John M. Watson.
 Blanco May 24 - 1878
 Blanco Co. Bdry line # 11 S. B. C. county 50578

Field notes & Sketch¹⁰
of line
between Blanco & Glens
Counties

county 50579