

6. File No 53 1880

Boundary line between
the County of
Kendall
&
Blanco

Filed July 5th 1877.
" Dec 7th 1880
" Sept 25th 1877

signed by the Surveyor
separately.

1897

53

3

Kendall

Blanco Counties

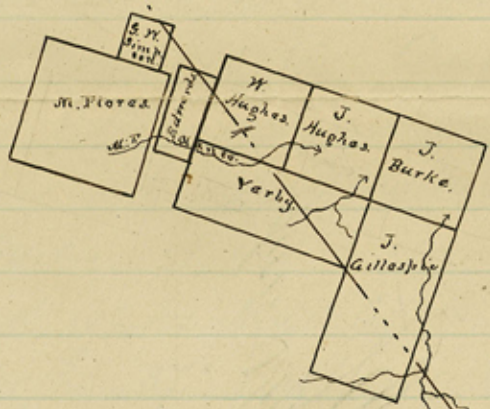
¹ Field Notes of line between.

² Field Notes of line between

³ Field Notes of line

Each report only signed
by Gen. Surveyor

Gillespie Co.



BLANCO
CO

Kendall Co.

Note:

From N. W. Cor. W. Hughes to N. E. Cor. S. G. Edwards. 520 ms. actual
Actual width of S. G. Edwards. on North line. bet. original Cors 836 ms.

From N. W. Cor. S. G. Edwards. to N. E. Cor. M. Flores. S. 44° W. 275 ms.

☞ These Cors. are all the original Cors. of the surveys.
perfectly identified.

Wm H. Westmoreth

C. H. Co.

Blanco Co. Bdry Line # 530

counters 50603

Comal Co.

19750. ins. Cross East fork Mill Creek.
 21150 " " " "
 21560 " " West fork " "
 24600 " " Branch running N. E. to Martins fork.
 26000 " " Martins fork of Blanco, Rock Mts. on North bank,
 on W. Hughes Survey.
 26750 " Road to Blanco.
 27260 " S. E. Cor. Manuel Plans Survey N. 48° W. 1360 ins.
 32850 " S. E. Cor. of Gillespie County, on Ridge between Natural Bridge Branch
 and water of Williamses Cr. w. Rock Monument.

James Crompton & Sam Ellis & c. c. Surveyed Aug. 29th to Sept. 7th 1877.

J. Wm. Westworth, Surveyor of Kendall Co.

Commissioners for the County of Kendall, do hereby certify
 that the above survey was made according to law by me,
 Given under my hand, this 20th day
 of Sept. A. D. 1877.

J. Wm. Westworth

C. S. K. Co. Commissioners

539

1877

Field notes
of
County line between
Kendall & Blanco Co.

Signed by Surveyor of
Kendall Co.

Boerne Kendall Co. Sept. 20th 1877.

Hon J. J. Groos,
Comr. Genl. Land Office

Sir:

As Commissioner for the
County of Kendall, appointed by the Court of said County
to re-run the line between Kendall and Blanco Counties
I have the honor to transmit to you the field notes
of said survey, giving such connections as I was able
to make upon the ground with other surveys.

The Plat I send will show the true position of surveys on
Martin's Fork of Blanco in reference to the Guadalupe River
system, and also the meadow in Manuel Flores, J. G. Edwards
& W. Hughes surveys in reference to each other.

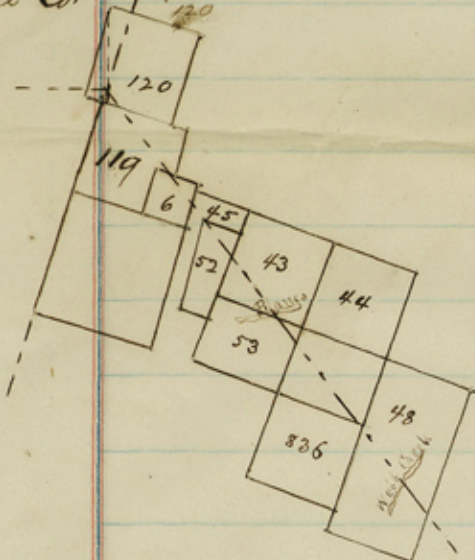
Original Survey made by J. W. Watson for James
Campbell, lying one mile west of said County line in
this County has never been forwarded to me for approval
or record.

Very respectfully,

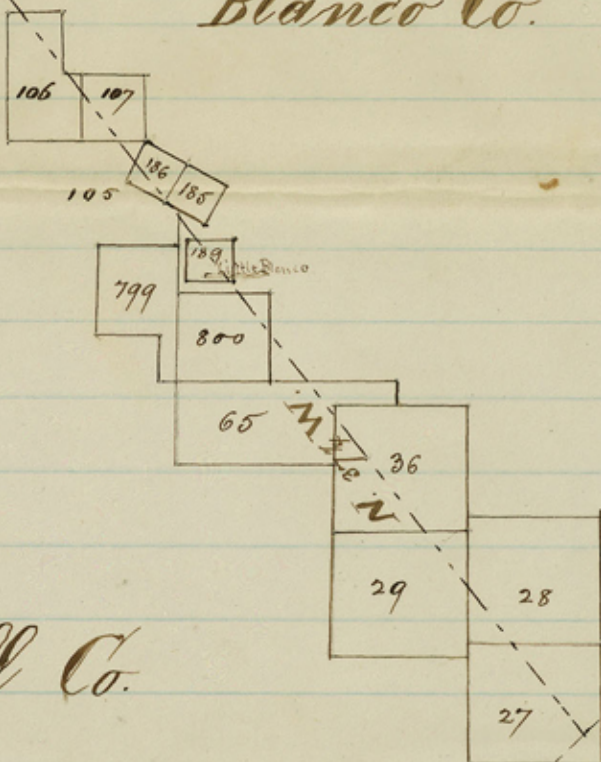
Wm. H. Westworth
Surveyor Kendall Co

Gillespie Co.

"District Line"



Blanco Co.



Kendall Co.

Comal Co.

Blanco Co. Bdry
Line #53b

63b



Blanco Co.
Boley Line
53b

O.K.

Filed Dec 7. 1880

McMurry
Carr

only signed by Surveyor
(Kendall) of
Blanco Co

counter 50597

The State of Texas, ^{County}
County of Kendall. I, Henry Theis, county
clerk of said county, do hereby certify, that
the foregoing is a true & correct copy
from the Minutes of the Commissioners
Court of Kendall County, as found in Book
B² on pages 376, 377, 378 & 379.

Witness my hand & the Seal of said
Court, at office in Boerne, this
30th day of November, 1880.

H. Theis
Co. Clerk Kendall Co.

6" bro. S. 8° W. 100 vrs mkt K. 32950 vrs. to
the S. E. corner of Gillespie County on the S.
side of a ridge about 400 vrs N of the natu-
ral bridge hollow. Live trees marked ≡
Surveyed August 24th, 25th, 26th, 27th, 29th
1880.

J. W. Ellis and B. T. Mitchell chain carriers
I, D. W. Grady Surveyor of Kendall County
do hereby certify that the foregoing Survey
was actually made in the field and ac-
cording to law and that the connections
and marks natural and artificial are
truly described in the plat and field
notes. Given under my hand and Boorne
this 8th day of November A. D. 1880.

D. W. Grady
Surveyor of Kendall County

Blanco Co.
Bdry line
#537

to monument 12 miles from the beginning
from which a L. O. 20" mkd. B bts N. 31°
E. 25 vrs. and 16" bts N. 41° E 30 vrs mkd B.
23460 vrs to E line of N^o 836 - 210 vrs from
its N. E. cor. 23800 vrs to divide between Blanco
(M) Web creek. 24700 varas to monument
13 miles from the beginning fr which a L. O.
8" bts S 29° W. 74 vrs. mkd K. and L. O. 6"
bts. N. 39° E. 12 vrs. - 26420 vrs to N line
of N^o 53 J H Yerby 1340 vrs from its N. W.
corner 26480 to Martins fork of the Blanco,
26600 varas, 14 miles from beginning from
which a fld. L. O. 16" on North bank of
Blanco bts S 5° W. 92 vrs mkd K and a
L. O. 14" bts. S. 16° E. 55 vrs mkd K. - 27200 to
Fredericksburg and Blanco road, 28038 varas
to W. line of N^o 43 W. Hughes, 1010 vrs from
its N. W. corner. 28500 vrs to a monument
15 miles from the beginning from which a
L. O. 14" bts. N. 40° W. 60 vrs. mkd. K (M) a
L. O. 14" bts. N. 54° W. 60 vrs. mkd B. - 28960
vrs to the N. line of N^o 52 S G Edwards, 8 vrs
E of its N. W. corner 30080 vrs to the N. line of
G. W. Simpson Survey 120 vrs. W. of a cor. of
N^o 119. - 30400 varas to monument 16 miles
from the beginning from which a P. O. 18" bts
N. 31° E. 107 vrs. 32300 vrs to a monument 17
miles from the beginning fr which a P. J.

L. O. 8" mkd K hrs S. 39° W. 25 vrs. -
 12250 varas to Little Blanca ck 13240.
 to Blanca & Comfort road, 13300 to monu-
 ment 7 miles from beginning from which
 a L. O. 18" hrs. S. 52° W. 44 vrs. mkd K.
 a L. O. 14" hrs. N. 44° E. 14 vrs. mkd B -
 13400 varas to N. line of Survey No 189 E
 Wagener 200 vrs from its N. W. cor, 14200
 vrs. to S. W. line of No b. F. M. Navi 40
 vrs. from its W. corner. 15200 varas to monu-
 ment 8 miles from beginning from which
 a L. O. 10" hrs. N. 80° E. 53 varas mkd
 B L. O. 12" hrs. S. W. 44 vrs. mkd K -
 15247 vrs. to N. line of J Tanner Survey, 15817
 varas to N. line of No 105 G. W. T & P. ^{R. Q. G.} 17100
 varas to monument 9 miles from beginning
 fr which a L. O. 14" hrs N. 59° E. 65 vrs mkd
 B and a L. O. 12" hrs. S. 60° W. 44 varas.
 18600 vrs. to divide between Guadalupe & Blanca.
 19000 varas to monument 10 miles from the
 beginning fr which a Sp. O. 6" mkd K hrs
 N 58° W 12 vrs and a B. J. hrs. S 13° W 23 vrs
 mkd K. 19200 to N. line of Survey No 106 -
 72 vrs from its N. W. corner. 20900 vrs. to a
 monument 11 miles from beginning from which
 S. 81° W. 130 vrs. and a 3 prong L. O. mkd B
 a 3 prong L. O. mkd K hrs. N. 14° E 96 vrs
 21150 vrs to S. line of John Gillespie Survey
 No 48 - 21850 vrs to Web. creek. 22800 varas

#539
Blanco Co.
Bdry line

fr. N E cor No 29 - 4330 to Blanca & San Antonio road, 5645 varas to the N. line of Survey No 29 J. W. Cassidy 1008 vrs. from its N. E. corner, 5700 varas to a monument three miles from beginning from which a L. O. 16" brs. N. 15° E. 24 vrs mkd B and a L. O. 6" mkd K brs S 20° E. 50 varas. 6960 varas to a point from which the W. Twin Sister mountain brs E about 400 varas. 7200 vrs. ^{to} the old New Braunfels & Fredericksburg road. 7500 varas to deep ravine 7600 varas to monument four miles from the beginning from which a L. O. 8" mkd K brs. N. 47° E. 5 vrs. and a L. O. 8" mkd K brs. S. 30° E. 25 vrs. - 8600 varas to W. line of Survey No 36 J. W. Merwin 240 vrs S of its N. W. cor. 9200 varas crossing W. Twin Brother 20 vrs. W. of its top. 9500 varas to monument 5 miles from beginning from which a L. O. 8" brs S 18° W. 47 vrs mkd K (m) a L. O. 12" brs S 81° E. 90 vrs. mkd B. - 10800 varas a spring 10800 to top of lone man mountain 10850 varas to E line of Survey No 800 920 varas from its N. E. cor. 11400 varas to monument 6 miles from the beginning from which a

45 vrs. \odot a L. O. 14" bears N. 15° W. 107 vrs.
marked B. -

Thence I run a random line to the South
East corner of Gillespie county or N. E.
cor. of Kendall county \odot found that N. E.
corner of Kendall county is N. 37 $\frac{1}{4}$ ° W. of
the S. E. cor. of Kendall established on Comal
five miles from the mouth of Currys creek.
Then I established the boundary line be-
tween Kendall \odot Blanco counties as follows.

Beginning at a point on Comal county
line N. 45 $\frac{1}{4}$ ° E. 9500 varas from the mouth
of Currys creek a stone monument made
for the S. E. cor of Kendall & S. W. cor of
Blanco county, from which a L. O. 12"
mkd. B hrs. S. 74° E. 45 vrs. \odot a L. O. 14"
mkd B hrs. N. 15° W. 107 vrs.

Thence North 37 $\frac{1}{4}$ ° W. 1900 varas to a
mile monument from which a L. O. 18"
mkd B hrs. N. 29° E 68 varas \odot a
L. O. 12" hrs. N. 48° W. 66 vrs. mkd K.
2645 vrs to the N line of survey No
27 F. Fowler 780 varas from its N. W. corner.
3800 vrs to a mile monument two miles
from beginning fr. which a L. O. mkd
K hrs. S 64° W. 7 vrs. \odot a L. O. 10" hrs S.
52° W. 35 varas mkd K 3945 varas to N.
line of Survey No 28 J Halpenny 1340 vrs

Court, at its May Term, 1880 to meet
 a Surveyor from Blanco County at the mouth
 of Currys Creek on the 24th day of August
 1880 for the purpose of running & estab-
 lishing the boundary line between Kendall
 & Blanco Counties I have the honor to sub-
 mit the following report and field notes
 of said line

After giving the requisite bond
 & taking the oath according to law I
 proceeded to the mouth of Currys Creek
 on the 23rd day of August with assistants
 H. J. Graham, J. W. Ellis & H. T. Mitchell
 The Surveyor or Commissioner from Blanco
 County failing to arrive on the day of the
 24th of August I commenced to run the
 line in accordance with instructions from
 W. C. Walsh, Commissioner of the General
 Land Office, addressed to J. M. Watson
 & D. W. Grady which is made a part
 of this report

I commenced at a point on Comal
 County line where Currys Creek enters the
 Guadalupe river. Thence with Comal
 County line N. $45\frac{1}{4}^{\circ}$ E. 9500 varas (5 miles)
 to a stone monument the S. E. cor. of Ken-
 dall & S. W. cor. of Blanco County from
 which a L. O. 12" marked B brs. S 74° E.

The State of Texas,
County of Kendall. Be it remembered,
that a Commissioners' Court was begun
& holden within and for the County of
Kendall, at the Courthouse thereof, in
the Town of Boerne, on the second Mon-
day in November, 1880, it being the Eighth
day of said month;

Present:

Hon. P. D. Sauer, County Judge,
W. P. Gourley, Esq., Com' Prec. No. 3,
Jos. B. Haddus, " " " " 4,
Henry Theis, Clerk and
John Reinhardt, Sheriff;

when the following proceedings were had,
to wit:

D. W. Grady, County Surveyor of Ken-
dall County, returned into Court the
following report and field notes of the
boundary line between the Counties of
Blanco and Kendall, and it is ordered by
the Court, that said report & field-notes
be recorded in the Minutes of this Court,
to wit:

"The State of Texas,
County of Kendall. To the Hon. Com-
missioners' Court;

Having been appointed by your Hon.

Blanco Co.
Bdry. Line
#53b

Blanco Co. Bdwy. June 4 53a

This State of Texas I J Wm Carty
County of Blanco CLK of the C. C. B. C.
do hereby certify that the foregoing
attached four pages of writing
is a true & correct transcript
from the Records of the Commis-
sioners Court of this County &
now on file in this office as the
minutes of said Court

Witness my official signature
and seal at office in Blanco
this 3rd day of July A.D. 1877
J Wm Carty
CLK, C. C. B. C.

Exhibit A
Fieldnotes of

Line between Kendall & Blanco

Co.

This survey is not according to the law
defining the line between the two Counties.
The S.E. corner of Gillespie Co. is one fixed
point and the other is on the N.W. line of
Barrel Co. 5 miles from the mouth of Barry's
Creek. The latter point has been established
by these fieldnotes about 1 1/2 miles from the
mouth of Barry's Creek. July 5/77

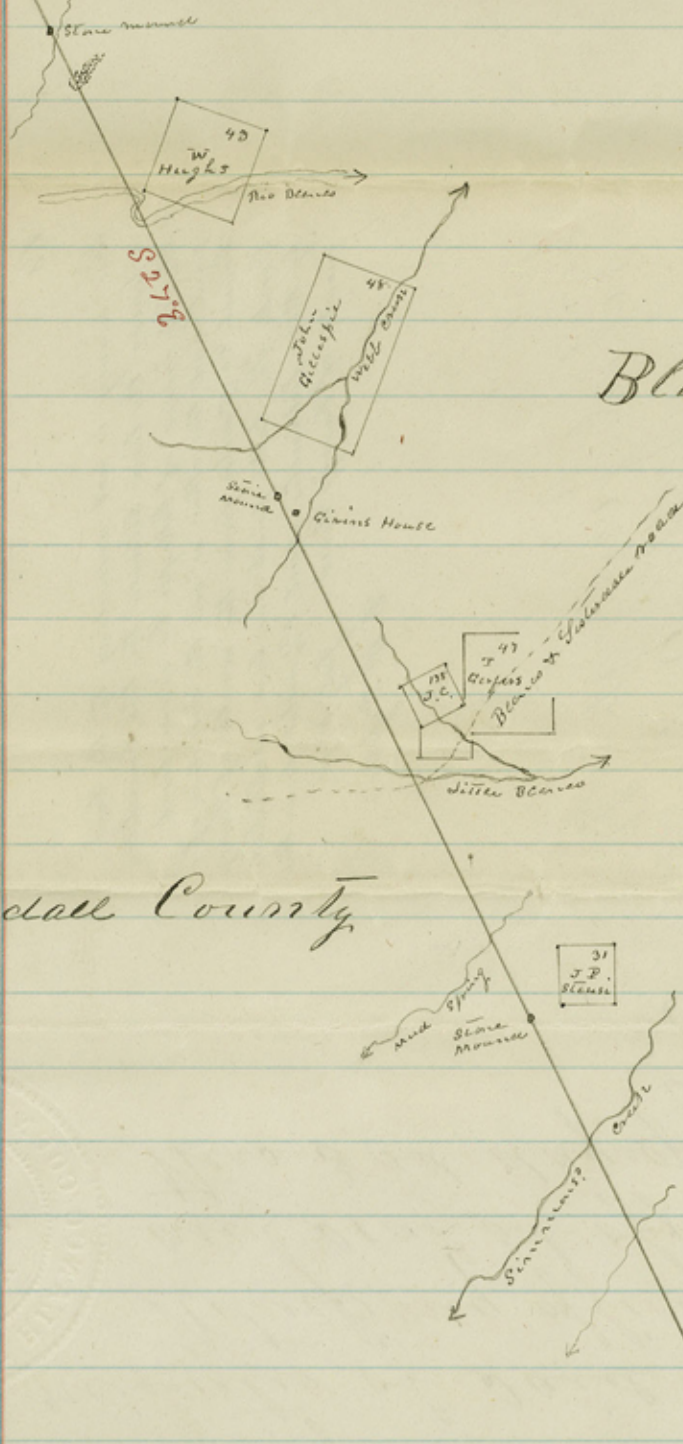
B. W. Peoples.

Filed June 9th 1877
J Wm Carty
CLK C. C. B. C.

Filed in Genl. L. Co. office
July 5/77
W. Peoples

N. G.

Gillespie
County



Blanco County

Kendall County

Comal County

Scale 4000 yards per inch

at this point found the S^W Corner of Survey
 No 31 in the name of J. P. Steuse to bear N33°E 580 or
27800 varas. Simmons, Cut 2.9830 as a
 dry branch in all 34700 varas to a Stone
 mound on the N^W boundary line of
 Comal County, from which a Live Oak 15 in
 in diameter bears. N80°E 23 varas, Marked C,
 and a Post Oak, 12 inches in dia, bears. N57°W
 21 as Marked K and another Post Oak 20 in
 in dia, bears, N44°E 17 varas, Marked B. The
 S^W Corner of Survey No 166 in the name of
 W. C. Howard bears N21°E 1000 varas. The trees
 on each side the line are marked with five (5)
 haches. Three standing in the line, are marked
 with blaze.

various 9.45 East

John McVatt } Chain
 Green Harrison } men

I John M. Watson Surveyor of Blanco County, hereby
 Certify that the Survey, designated by the foregoing Guide
 notes, and the accompanying sketch, was made by me,
 according to law, and that the distances, marks, natural
 and artificial, are truly given, and described therein
 given under my hand this 9th day of June 1837.

John M. Watson
 Surveyor of Blanco County

The State of Texas.

County of Blanco.

Field notes of a Survey of the
County line between Blanco County and Kinross
County —

Beginning at the (S E) South East
Corner of Gillespie County.

Thence S 27° E at 1900 varas a Stone Mound, 2200, is
a branch, 3100 varas on top of the West point
of a high Hill, 5630 varas Stone Mound on
the North bank of Blanco. — The S. W. Corner
of Survey N° 43, in the name of W. Hughes, bears
N 65° E 400 varas from this point, 5690 varas
Centre of Blanco. 6390 varas Crossed Blanco
again. 6600 varas crossed Blanco. 9000 varas
Stone Mound. 11820 varas. The West prong of
Webb Creek (or Crab Apple) 12700 varas to a
Stone Mound on top of the divide between
East and West prongs of Webb Creek. 13750 varas
in Givins' Hill, 200 varas West of his house —
from this point, found the S. E. Corner of Survey
N° 48 in name of John Gillespie, to be N 35° E 2000, is
14070 varas The East prong of Webb Creek, 18160, is
about 800 varas due West of James Campbell's
House. 19000 varas found the South, or S. E. Corner
of Survey N° 178, to be N 20° E 890 varas, 19390 Crossed
Little Blanco. 19630 varas Blanco & Sisterdale road
23400 varas Mud Spring branch, 25000 varas
Twin Sister Mt, bears due East about 2 Miles —

John W. Watsons
Report

Filed June 9th 1877
Jeff. Co. W. Va.
W. C. C. B. Co.

To The Hon. Commissioner's Court, Blanco County,

In pursuance, to an Order
from your Honorable body, dated 31st March 1877,
and Ordering me to run and establish the line
between Blanco & Mendocino Counties, would
respectfully report, that in Conformity to your Order,
I repaired to the South East Corner of Gillispie
County, on the Morning of the 5th Inst., and after
waiting until 3 O'clock P.M., and failing to meet
The Surveyor or Commissioner from Mendocino County,
I proceeded to run and establish the line
between Blanco and Mendocino Counties, and
have the honor, to submit herewith, The Field
notes and Sketch or map of said line, - marked
exhibit, A,

Blanco June 9th 1877

John M. Watson
Surveyor of Blanco County

It appearing to the Court that in conformity with an order of this Court, made on the day of May 20th 1877 and after legal notice of same, had first been given to the Commissioners Court of Kendall County, J. M. Watson did on the 5th day of June 1877 proceed to run the County line between Blanco & Kendall Counties, and did on the 9th day file his report thereof as prescribed by law and the said report now having been examined by the Commissioners Court of Blanco County it was ordered by said Court that the said report be approved and recorded.

I certify that the above is a correct copy taken from the minutes of the Commissioners Court of Blanco County Texas.

Witness my official signature and seal at office in Blanco this 3rd July 1877
Wm. C. Barty
Clerk of the County

1877

Jan. Sept 25/97
J. J. Moore & Co.

Blanco Co. Bday. Line #530