

The State of Texas )  
Counties of Borden )  
and Scurry )

Field notes of a survey of the East line of Borden and West line of Scurry Counties. Made by virtue of an order of the County Court of Borden County and passed at the regular February term of said Court on the 11th day of February, 1908. And order of the County Court of Scurry County passed at the regular term of said Court on the \_\_\_\_\_ day of February, 1908. Concurring with the said County Court of Borden County for the purpose of establishing the East boundary line of said Borden County, and the West boundary line of the said Scurry County.

The undersigned surveyors met on the 29th day of April at the S.E. Corner of Borden Co. and the same being the N.E. Corner of Howard County as established by W.S. McClung, Special Surveyor for County boundaries Borden Co. And T.H. Seay, Special Surveyor for County boundaries Howard Co.

Said S.E. Corner Borden Co. and S.W. Corner Scurry Co. being a flat sand stone 2 ft. X 2 ft. X 6 in. placed in pit with surface of stone on level with surface ~~with~~ of ~~stone~~ with ground and mkd. by two lines running a cross the face of Stone North and South and crossing at right angles at the center of said stone. The N.W. quarter of Stone mkd. Borden Co. W.S. Mc., on the S.W. quarter of Stone mkd. HOWARD CO. and date 1908 on West half of stone.

From said corner stone a large stone in large stone mound brs. N.  $38^{\circ}36'$  W. 647 vrs. A pit filled with broken stone where a large stone was placed in 1907 by H.W. Stoneham for the N.W. Corner of Mitchell Co. brs. N.  $15^{\circ}45'$  W. 237 vrs. (The stone has been moved by some one) A mes 6" dia. mkd. W. 60 M.J.C.C. brs. S.  $23^{\circ}50'$  E. 10.8 vrs. A large stone mound 2-1/2 feet sq. at base and 3-1/2 feet high brs. S.  $56^{\circ}30'$  E. 372 vrs.

The N.E. Corner of Survey No. 66 Block No. 25 Lavaca Navigation Co. is East 152 vrs. and North 73 vrs. from said S.E. Borden and S.W. corner ~~Scurry~~ Scurry Cos.

A large sand stone is set in the ground on the South side of corner stone and is marked L.X.M.W. Another sand stone Mkd. E.L.B.C. on West face is set in the ground N. 60 vrs. South from corner. Another sand stone mkd. E.L.H.C. on its West face is set in the ground 60 vrs. South from corner.

Beginning at the center of said stone, the S.E. Corner  
Borden County, the S.W. Corner Scurry Co. and N.E. Corner of Howard  
Co. (Magnetic variation  $10^{\circ}45'$  E.)

1st Mile  
LST. Thence North 29 vrs. cross Willow Creek. Cross wagon road at  
468 vrs., 1900.8 vrs. set stone in open prairie. Said stone  
mkd. on East face W.L.S.C. 1M. On West face E L B C 1M. From  
wh. a wind-mill brs.  $S.74^{\circ}58'E$ . Wind-mill brs.  $S.71^{\circ}10'E$ . The  
(N.E. Corner Survey No. 71, Block 20 Lav. Nav. Co. brs.  $N.63^{\circ}39'E$ .  
(232 vrs.

2nd Mile  
Thence North over open prairie 1900.8 vrs. set stone mkd. on  
East face W.L.S.C. 2M. One West face E L B C 2M. From wh. N.E.  
Cor. Survey No. 78 Blk. 20 Lav. Nav. Co. brs.  $N.63^{\circ}22'E$ . 286 vrs.  
A Wind-mill brs.  $S.37^{\circ}10'E$ . Bluff on end of flat top Mt. brs.  
 $S35^{\circ}35' W$ .

3rd Mile  
Thence North 116.7 vrs. cross fence 326 vrs. cross wagon road.  
1232 vrs. cross draw. 1800 vrs. cross East end of a little rocky  
mound. Pass over said rock mound 1900.8 vrs. set large stone  
mkd on west face E L B C. 3M. On East face W L S C. 3M. From  
wh. N.E. Corner Survey No. 83 Blk. No. 20 Lav. Nav. Co. brs.  $N.63^{\circ}58'$   
 $E.551.4$  vrs. A big flat rock mkd. X on N. side rocky mound brs.  
 $S.87^{\circ}34'W$ . 28.8 vrs. Another big flat rock mkd. X on East side  
(said rocky mound brs.  $S.4^{\circ}55'W$ . A big stone monument brs.  $S.99$  Vrs.  
(April 30th, 1908.

4th Mile  
Thence North through mes. flat. 760 vrs. cross draw. Cross draw  
1467 vrs. 1900.8 vrs. set stone in Colorado River Bottem near  
east end of a lake. Said stone mkd on East face W.L.S.C. 4M.  
On West face E L B C 4M. from wh. double mes. 12" brs.  $S.11^{\circ}10'$   
 $E.553$  vrs. Mes. 12" dia. brs.  $17^{\circ}10' W$ . 99.6 vrs. Mes. Mkd. X.

5th Mile  
Thence North through Colorado River bottom 790 vrs. cross  
Colorado River. Ascending hill, cross draw 1310 vrs, cross wagon  
road 1482 vrs. at 1900.8 vrs. set stone mkd. on East face W.L.S.C.  
5M. Said stone set in sandy cat claw land.

3 Borden & Schuy

1/1908

Finished 5-6-08

McLung & Seay

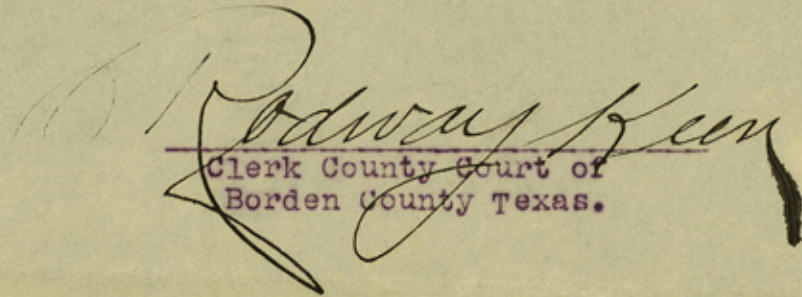
E/L Borden

counter 50613

The State of Texas

County of Borden

I, Rodway Keen, Clerk of the County Court of Borden County Texas do hereby certify that the above and foregoing instrument of writing is a true and correct copy of the original as the same appears of record in my office in the Minutes of the County Court Volume 1, page 171 to 179 respectively.  
Given under my hand and seal of Office this 23rd day of June A.D.1908.

  
Clerk County Court of  
Borden County Texas.

off corner. The monument<sup>S</sup><sub>A</sub> of said corner is a large rock mkd. E L B.C.  
 100 vrs. set in large rock mound. From wh. the Old Camp Corner  
 Con. of 30th mile  
 brs. N. 29° 2' W. A large stone mkd. N.L.B.C. 100 vrs. is set in large  
 stone mound 100 vrs. West of N.E. Corner of Borden Co. and N.W.  
 corner Scurry Co. From wh. bearing stone The Woods Old Corner  
 brs. N. 24° 2' W. 584.5 vrs. The Camp old N.E. Borden County Corner  
 brs. N. 25° 56' West 727.7 vrs.

Survey finished May 6th, 1908.

J. A. Orr	}	Chain Carriers
Z. Robinson		
D. B. Tucker	}	Rodmen
E. S. Wright		

We, W.S. McClung Special Special Surveyor for County boundaries  
 Borden County, Texas.

*T.H. Seay District Surveyor for Howard  
 Land District*

Do hereby certify that the foregoing survey was made by us in the  
 field and on the ground according to law with the Chain carriers,  
 and Rodmen duly qualified and that the limits, boundaries, and cor-  
 ners with the marks natural and artificial are truly and correctly  
 described as set forth in the foregoing field notes and plat accom-  
 panying same.

Given under our hands this 11<sup>th</sup> day of June, A.D. 1908.

*W.S. McClung* (Special Surveyor for County Boundaries  
 Borden County, Texas)

*T.H. Seay* (District Surveyor for County Boundaries  
 Howard County, Texas.)

- Thence North cross fence 344.7 vrs. wagon road. Fence 360 vrs.  
1900.8 vrs. Set Cedar post 5" dia mkd. on East face W.L.S.C.24M  
24th mile On West face E.L.B.C.24M From wh. Mes. 10" dia. mkd. X. brs.S.  
10°50'W. 59 vrs. Mes. 8" dia.mkd. X brs.S.31°14'W.57 vrs.  
Open prairie.Soil firm.
- Thence North cross fence 369.2 vrs. Cross wagon road 374 vrs.Cross  
25th mile fence 1315 vrs. 1900.8 vrs. set Cedar post 5" dia mkd. on East face  
W L S C. 25M. On West face E L B C.25M. From wh.mes.6" dia mkd.25M.  
brs.~~S.31°30'E~~S. 31°45'W. 41.5 vrs Mes.4" dia.mkd. 25M. brs. S.60°  
30'E.36.9 vrs. Soil firm and dark read.
- Thence North cross fence 385 vrs. Cross wagon road. Cross fence 396  
26th mile vrs. Fence 859 vrs. fence 1518 vrs. 1900.8 vrs. set stone in stone  
mound on top of hill.Said stone mkd. on West face E.L.B.C. 26M. On  
top 26M. From wh. point of bluff of South end Long Mt. brs. N.71°4'  
E. South end Gail mt. brs. S.58°35' W. Cordova peak brs.S.47°12'W.  
May 4th,1908.
- Thence North cross fence 386 vrs. 1900.8 vrs. set hard lime stone  
27th mile mkd. on East face S.C.27M. On West face B C. 27M. From wh. mes.10"  
dia.mkd. E L B C.27 X brs. N.50°47'E.55.3 vrs. Mes. 10" dia.mkd.  
W L S C.27 X.br. N.75°47'E.61.4 vrs. Soil firm Young mes.timber.
- Thence north cross fence 389 vrs. 1900.8 vrs. set Cedar post 6" dia.  
28th mile mkd.on East face S.C.28M. On West face E L.B.C.28 M. From wh. Mes.  
5" dia. mkd. B.C.28 M. brs. S.5°35'W. 10 vrs. Mes. 2" dia mkd.X brs  
S.45°50'W. 3.6 vrs. Mes. 3" dia.Mkd. S.C.28M. brs.S.44°9' 13 vrs.  
Said post is in rock mound,in open prairie with few mes.
- Thence N.408.6 vrs. intersect North line of Survey No.579 Blk.97,  
H & T.C.Ry.Co. 852 vrs. west from said N.E.corner Survey No.579.  
29th mile Cross fence 1094 vrs. 1900.8 vrs. set Cedar post 6" dia mkd. on East  
face W.L.S.C. 29M. On West face E.L.B.C.29M. From wh. East end of  
bluff in canyon brs.N.37°E. West end of bluff ~~xx~~ in canyon brs. N.54°  
30' E. Mes. 5" dia mkd. B.C. 29 brs.N.53°6' W.8-1/2 vrs.
- Thence North continuing up high divide between two canyons Cross  
draw 440 vrs. At 851.3 vrs. reach North brink of deep canyon.1900.8  
30th mile vrs. to N.E.Corner Borden Co. & N.W.Corner Scurry Co. Which distance  
falls 3.7 vrs. off of abrupt bluff into Canyon.  
Build stone monuments 100 vrs. S.of said corner and likewise West

18th mile { Thence North cross fence 271.2 vrs. Cross draw 972 vrs. Cross wagon road 1160 vrs. Cross wagon road 1578 vrs. 1900.8 vrs. set stone mkd. on East face W L S C 18M. On west face E L B C 18M. From wh. mes. 6" dia. mkd. X. brs. N.10° 16' W. Mes. 4" dia. mkd. X brs. N. 21° 19' E. 86.3 vrs. Stone set in mesquit flat. Soil dark firm and dark red.

19th mile { Thence North cross fence 289.4 vrs 1900.8 vrs. Set stone mkd on East face W.L.S.C. 19M. On west face W.L.B.C. 19M. From wh. Mes.5" dia. brs.S.56° E.32.4 vrs. Mes. 4" dia.mkd. X brs. N.22° 41' W.32.1 vrs. This stone is set in prairie with scattering mesquit timber.

20th mile { Thence north cross fence 290.7 vrs. Cross draw 806 vrs. Cross wagon road 1865 vrs. 1900.8 Set stone mkd. on East face W L S C. 20M. On West face E L B C 20m. This stone is near foot and on South side of a rocky hill. It is also just past of house about 200 vrs. A Rock mound on rocky point brs. N.113.3 vrs.

May 3rd, 1908.

21st mile { Thence North ascend rocky hill 113.3 vrs. a rock monument. Cross wagon road 152 vrs. Cross fence 303.7 vrs. Cross wagon road and fence 315.6 vrs. Cross draw 700 vrs. Cross fence 1121.7 vrs. 1900.8 vrs. set Cedar post 5" dia. mkd on east face W L S C. 21M. On West face E.L.B.C. 21M. From wh. wind-mill a Mr. White's residence brs.S.63° 4 W.Wind-will at S.Aken's place brs. S.50°58' E. Wind-mill J.B.Taylor's brs. N.20°30' E. Wind-mill at Hughs house brs.N.42°32' W. Cordova Peak brs. S.61° 15' W. This Stone is set in Hughe's field.

22nd mile { Thence North cross wagon road 340 vrs. Cross fence 353.5 vrs. Cross fence 565, vrs. pass through prairie and cross fence 1293 vrs. Cross fence 1304 vrs. 1900.8 vrs. set Cedar post 5" dia. mkd. On East face W L S C 22M. On West face E L B C. 22M. From wh. mes. 5" dia. mkd. S C.22M brs. N.64°40' E.10.7 vrs. Mes.mkd. B.C.22M. <sup>brs.</sup> N.88°30' W. 27 vrs. Taylor's wind-mill brs.S.54°45' E.

23rd mile { Thence N.348.2 vrs. cross fence with telephone wire on post 1900.8 vrs. set stone mkd on east face W L S C.23M. On West face E L B C. 23M. From wh. Mes. 10" dia mkd.W L S C. brs.N.6°43'E.64-1/2 vrs.Mes. 5" dia mkd. MAY,23 brs. S.6°10'W.26.6 vrs. Mes 8"dia.mkd.1908.brs. N. 89°4' E.55.3 vrs. Soil firm Mes. timber.

12th mile Thence North cross fence at 362.8 vrs. Cross wagon road 598.5 vrs. passing up slope on open prairie 1900.8 vrs. set stone mkd. on East face W.D.S.C. 12 M. On West face E L B C 12 M. soil firm and open prairie.

13th mile Thence North 424 vrs intersect North line Survey No.150 Blk. 25 2582.5 vrs. West of N.E.cor. Survey No.149 Blk.No.25, H & T.C.Ry.Co. H & T C.Ry.Co. 1900.8 vrs. set stone in stone md. Said stone mkd. one East face W L S C 13M. On West face W.L.B.C. 13M. From wh. East end of red mound brs. S.42° 11' W. East mound in cluster of mounds brs. S.63°9' W. Bluff of N.end Long Mt. brs. N.64° W. Mes. 4" dia. mkd. W L.S.C. 13M. Brs. S.25 E. 11 Vrs. Mes. 4" dia mkd. E L B C 13M. brs. S.1° 43' W.35.6 vrs.

May 2nd, 1908.

14th mile Thence North 340 vrs cross draw . Cross fence 705 vrs. Cross draw 1135 vrs. Cross fence' 1869.2 vrs. 1900.8 vrs. set stone in field Said Stone mkd. on East face W L S C 14M. On West face E.L.B C. 14M. From wh. East end red mound brs. S.30° 51' W. Cordova Pwak brs. S.89° W.

15th mile Thence North at 533.6 vrs. Cross North line Survey No.219 Blk.25, H & T.C.Ry.Co. at wh. point N.W.Corner Survey No.219 Blk.97, H & T C.Ry.Co. brs.S.89° W. 127.9 vrs. from point of intersection, which at wh. point S.E.Cor. Survey No.238 Blk.97 H & T.C.Ry.Co. brs. S. 87°45' E.455 vrs. from point of intersection 1900.8 vrs.set cedar post 5" dia. mkd. on East face W.L.S C 15M. On West face E L B C. 15M. From wh. mes. 6" dia. mkd. W L S C. 15M. Brs. S.45°45' E. 22.3 vrs. Mes. 8" dia.mkd. E L B C. 15M. brs. N.41°48' W.

16th mile Thence North Cross fence 516.7 vrs. Cross Gail-Snyder wagon road 525 vrs. Cross fence 538.6 vrs. Pass through a field 1530 vrs. cross fence. 1900.8 vrs set Cedar post 5" diam. mkd. on East face W L.S.C. 16M. On West face E.L.B.C. 16M. From wh, mes. 5" diam. mkd. W L S C. 16M. brs. S.86°21' E.32.3 vrs. Flew on new house brs. S.3° 31' W.Cordova Peak brs. N.80° 24' W. Soil firm.

17th mile Thence North cross fence 316.2 vrs. Cross draw 540 vrs. Cross draw 900 vrs. Cross wagon road 1027 vrs. 1900.8 vrs. set stone in wide draw. Stone mkd. on East face W.L.S.C. 17M. On West face E L B C. 17M. This Stone may be displaced on account of its position.



Thence North through young Mes. timber and heavy sand intersect North line Survey No.71 Blk. No.25 H & T.C.Ry.Co. at 231.3 vrs. at wh. point N.E. Corner of said Survey No.71, Blk.25, H & T.C.Ry.Co. 6th mile vrs. S.88°30' E.351.8 vrs. passing through heavy shinary and down sandy bluff. Cross draw 1560 vrs. Recross same draw 1720 vrs. Rescross same draw 1850 vrs. 1900.8 vrs. build rock mound in a young mes. thicket, near west bank of small ravine.

Thence North cross draw 58 vrs. Cross draw 68 vrs. Cross draw 465 vrs. Recross same draw several other times. Cross wagon road 1252 vrs. 1900.8 vrs. set stone on top little rise. Said stone mkd. on East face W L S C. 7M. On West face E.L.B C. 7M. from wh. mes. 6 dia mkd. W L S C vrs. S.85° 24' E.

Thence North cross wagon road 184 vrs. Cross fence 271 vrs. Cross rocky cliff 1680 vrs. 1900.8 vrs. set stone mkd. on East face W L S C. 8M. On West face E L B C 8M. From wh. large rock on side of cliff (near the bottom) mkd. X vrs. S 49° E.218. vrs. Large rock mkd. X on west side of rock hill vrs. S.51°35'E.167. vrs. N.E. Cor. Survey No.102 Blk. No.25 H & T C.Ry.Co. vrs. N.56°35' E.592. vrs. May 1st, 1908.

Thence North cross angle fence 10.5 vrs. Cross fence 361.5 vrs. Cross draw and pass on top of rocky point On top of said point and on line a large rock monument from wh. Cordova Peak vrs. N.67°13' W. at 1580 vrs. pass off bluff between two large rocks 1900.8 vrs. set stone mkd. on East face W.L.S.C. 9M. On West face E.L.B.C. 9M. 380 vrs. S. and about 5 vrs. East and West of the line two large rocks mkd. X on North face and near the top of said rock.

Thence North cross Bull creek 189 vrs. continue through mes. flat 1897 vrs. cross a branch 1900.8 vrs. set a stone mkd. on East face W L S C 10M On West face E L B C. 10M Soil firm young mesquite timber. This stone may soon be misplaced because it is near brink of branch.

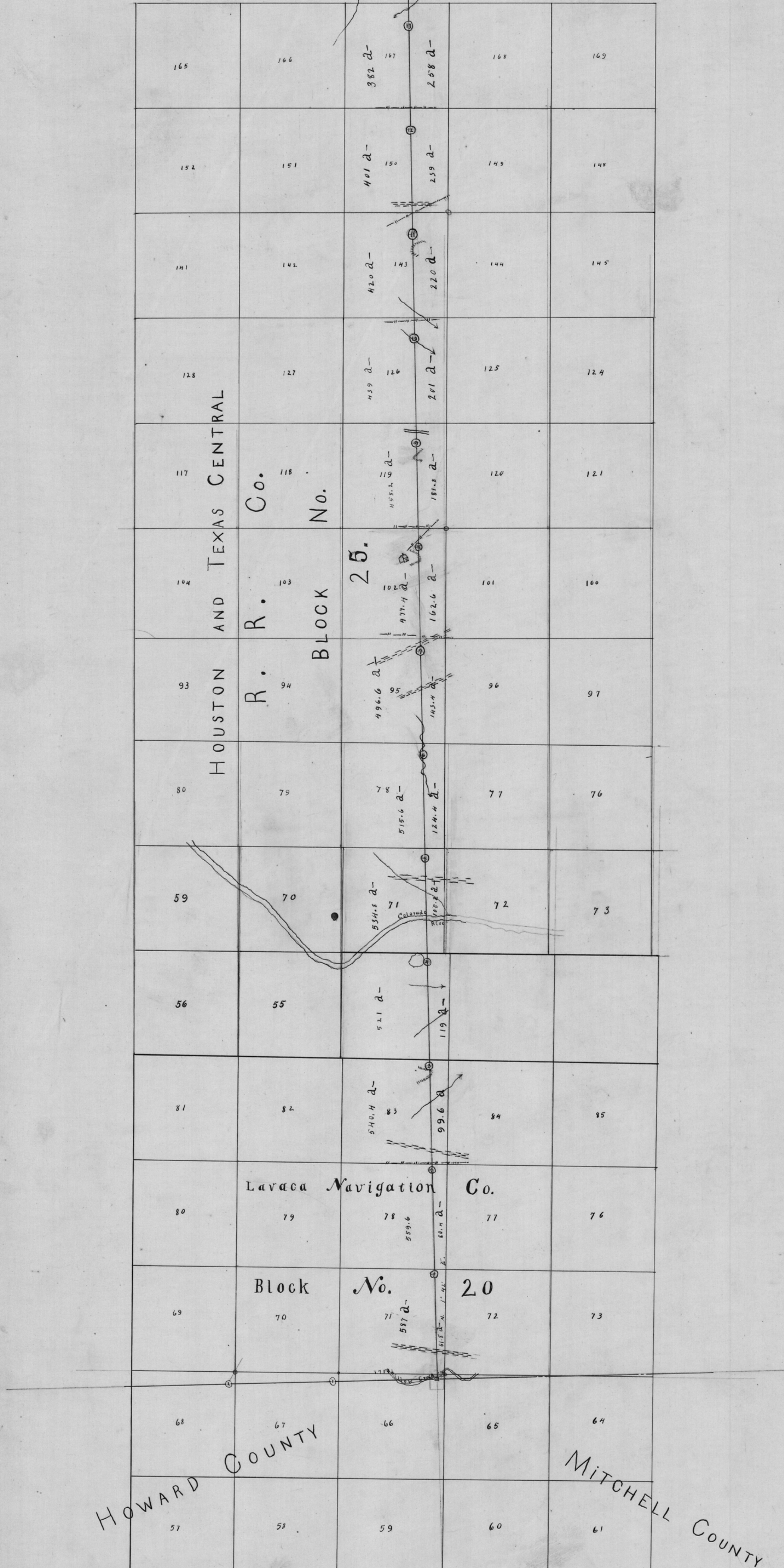
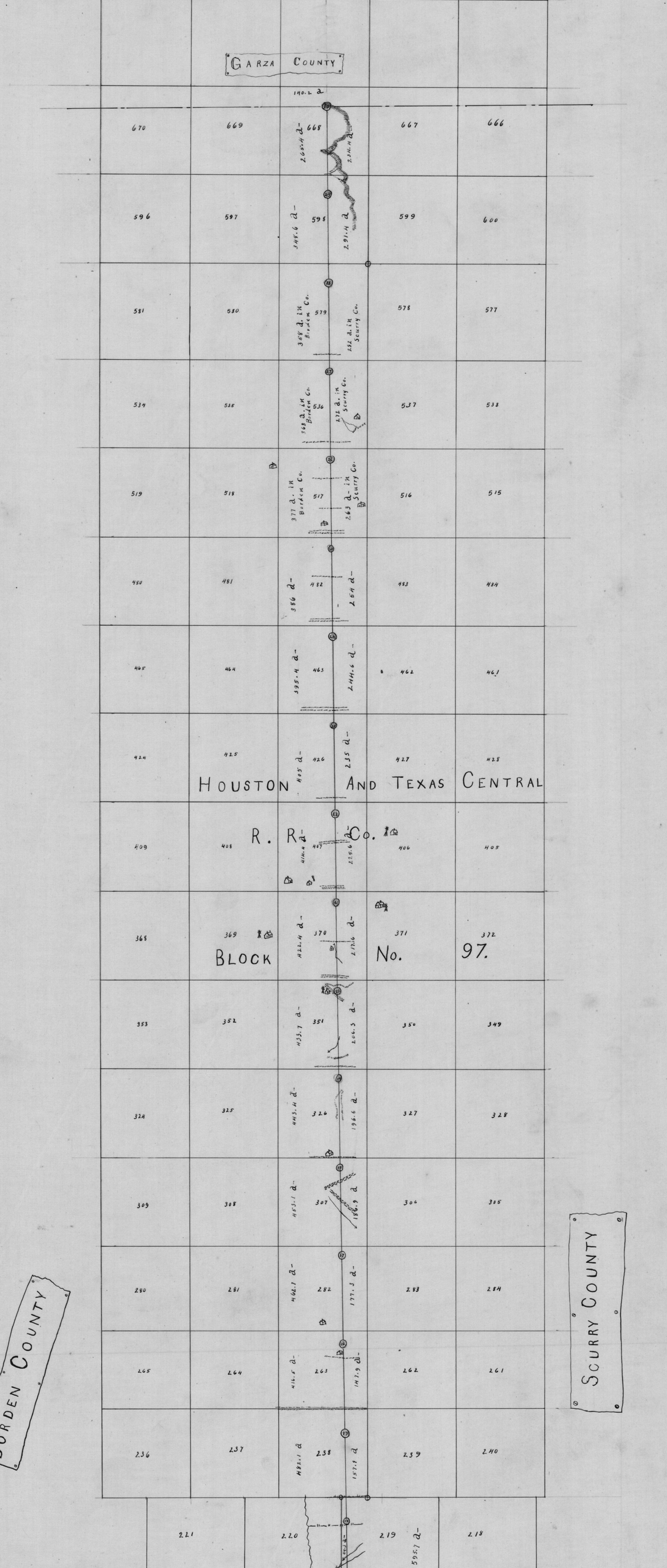
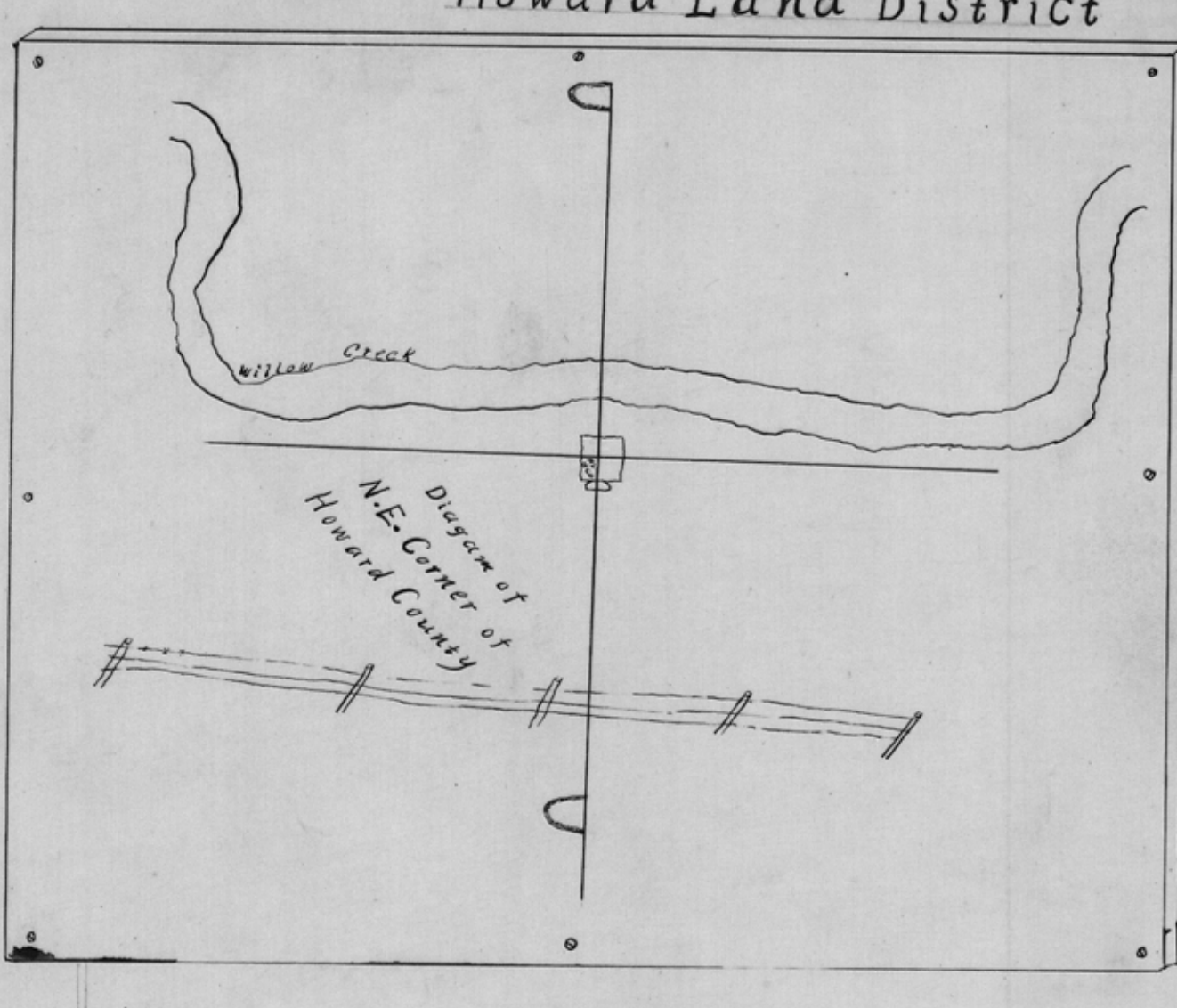
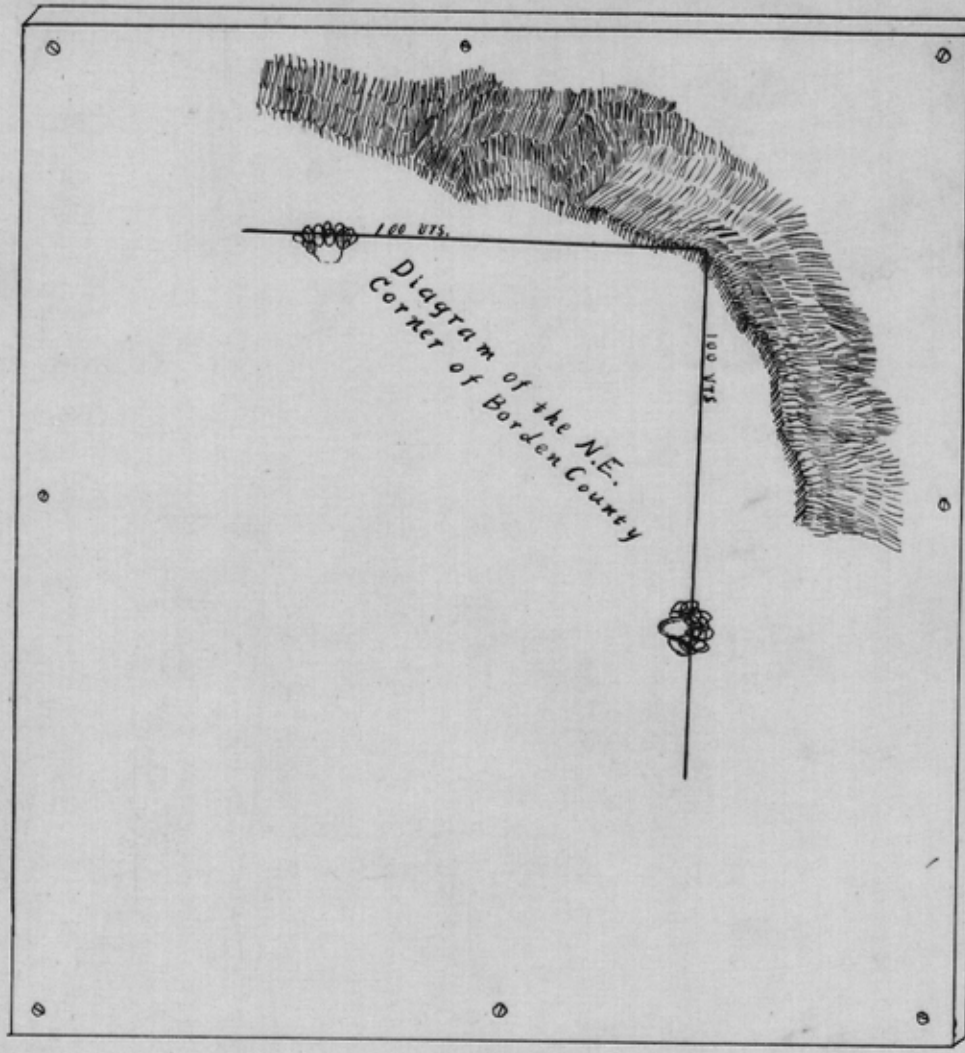
Thence North cross fence North line Survey No.126.Blk.No.25, H & T. C.R.Ry.Co. at 326.7 vrs. Cross draw 496 vrs. 1900.8 vrs. ~~set stone~~ set stone in flat near foot of small hill. said stone Mkd. on East face W L S C. 11M. On west face E L B C. 11M. From wh. mes. 8" dia. mkd. on X vrs. S.82° W.25.4 vrs. Mes. 5" dia. mkd X N.98 Vrs. and 1 vr. East

Exhibit No. 9 of Borden & Mitchell Co  
BORDEN CO

County 65595

# MAP OF EAST LINE BORDEN COUNTY AND WEST LINE SCURRY COUNTY

Scale 1000 Varas to the Inch Compiled and Drawn by T.H. Seay, Surveyor for Howard Land District



The State of Texas }  
County of Borden }  
We the undersigned Surveyors hereby certify that the foregoing map is a correct map of the East boundary line of Borden County and the West boundary line of Scurry County as surveyed and marked on the ground by us and that same shows correctly the relative position of said County line to the boundary lines and corners of the land surveys through which it passes and all other natural and artificial objects which it touches this 11th day of June A.D. 1908

*T.H. Seay* Special Surveyor for County Boundary  
Borden County Texas  
District Surveyor for  
Howard County, Texas.

The State of Texas }  
County of Borden }  
I, Rodway Keen, County Clerk of Borden County, Texas, do hereby certify that the above and foregoing is a true and correct copy of the plat of the East boundary line of Borden County, as the same appears on file in my office.  
Given under my hand and seal of office this 13th day of July 1908.

*Rodway Keen* County Clerk,  
Borden County, Texas.

Filed 15th day  
of July A.D. 1908.  
at 3 o'clock P.M.  
*Rodway Keen*  
County Clerk  
Borden County, Texas

Approved this 15th day  
of July A.D. 1908  
*J. H. Seay*  
County Judge  
Borden County, Texas

BORDEN COUNTY

SCURRY COUNTY

HOWARD COUNTY

MITCHELL COUNTY