

The State of Texas)
 Counties of) Field notes of a survey of the West line
 Borden and Dawson) of Borden County, and the East line of
 Dawson County. Made by virtue of an order of, the County Court of
 Borden County, and passed at the regular Feb. term of said Court on
 the 11th day of February, 1908. and an order of the County Court of
 Dawson County at the regular Feb. term of said Court on the ___ day of
 Feb. 1908. Concurring with Borden County for the purpose of establish-
 ing the West boundary line of Borden County and the East line of Daw-
 son County.

We, the undersigned surveyors met on the 18th day of May 1908.
 at the N. W. Corner of Borden County, the same being the N. E. Corner
 of Dawson County, as established by W.S. McClung, Special Surveyor for
 County Boundaries of Borden County.

Said N.W. Corner Borden County, the same being the N. E. Corner of
 Dawson County, is a stone 2ft X 2ft X 4", placed in a pit level with
 the surface of the ground. Across the face of said stone two straight
 line are cut N&S, E&W, and intersect at right angles at the center of
 stone, which is the corner of the above named Counties.

The N. half of said stone mkd. L Y N N, 5/18/08. The S. E. Quarter
 mkd. N.W. Cor B C. The S. W. quarter mkd. N.E. Co D C. Six inches S. of
 said corner stone a set stone 10" X 2ft X 5" mkd. 30 B C. A stone
 14" X 14" X 6" mkd. on S. face D C N L brs. W. 50 vrs. A stone 14" X
 14" X 6" mkd on S. face N L B C brs. E. 50 vrs. The Wood's old corner,
 being a set stone mkd. on E. face N W B C. on W. face D C. brs. N. 37
 44' W. 448.8 vrs. A wind-mill brs. N. 12 49' W. Wind-mill brs. N42 E.

May 19 th, 1908.

Beginning at the above described corner, Declination 11 20' East.
 Thence S. 100 vrs. pass set stone 10" x 2ft x 6" mkd. on E. face W.L.B.C.
 1st. on W. face mkd. E.L.D.C. At 1900.8 vrs. set stone mkd. on E. face W.L.
 Mile. B.C. 1M. on W. face E.L.D.C. 1 M. From wh. Wind-mill brs. N. 80 20' W.
 Wind-mill brs. S. 8 25' W. Stone set in open prairie. Soil firm and dark.



2nd Mile Thence S. through open prairie 1900.8 vrs. set stone mkd. on E face W.L.B.C. 2 M. On W. face S.L.D.C. 2M. From wh. wind-mill brs. S. 34 18' W. Wind-mill brs. S. 1 14' W. Set stone in E. edge of a field

3rd Mile Thence S. through open prairie. 1900.8 vrs. set stone mkd. on E. face W.L.B.C. 3 M. On W. face E.L.D.C. 3 M. From which a wind-mill brs. N. 85 32' W. A wind-mill brs. N. 19 12' W. Stone set in open prairie.

4th Mile Thence S. through open prairie 1900.8 vrs. set stone mkd. on E. face W.L.B.C. 4 M. On W. face E.L.D.C. 4M. From wh. wind-mill brs. S. 16 15' E. Flue on East end of house brs. S. 16 W. This stone set near B.F.Hughes house.

5th Mile Thence S. Through prairie 1900.8 vrs. set stone mkd. on E. face W.L.B.C. 5 M. On W. face E.L.D.C. 5 M. From wh. West flue on house brs. S. 55 30' W. Flue on house brs. S. 39 32' E. This stone is set in a field. Soil firm.

6th Mile Thence S. through open prairie, 1900.8 vrs. set stone mkd. on E. face W.L.B.C. 6M. On W, face E.L.D.C. 6M. From wh. flue on house brs. N. 88 24' E. Flue on West end of house brs. N. 30 48' W. This stone is set in open prairie, Few scattering mes. Soil firm.

7th Mile Thence S. through open prairie 1900.8 vrs. set stone mkd. on E face W.L.B.C. 7 M. on W. face E.L.D.C. 7 M. From wh. point of bluff brs. S. 3 30' E. New house Brs. S. 55 30' E. This stone is near breaks of canyon.

8th Mile Thence S. descending hill into Indian Canyon, 1900.8 vrs. set stone mkd. on E. face W.L.B.C. 8M. on W. face E.L.D.C. 8 M. From wh. clump of trees on hill brs. S. 31 50' E. Rock on hill brs. S. 25 40' W. This stone is a little N.E. of the Indian Canyon Tank.

9th Mile Thence S. 164 vrs. reach Indian Canyon Tank. Crossing Draw, At 1900.8 vrs. set stone mkd. on E. face W.L.B.C. 9 M. on W. face E.L.D.C 9 M. From wh. rock on point brs. N. 83 E. Mes. 3" dia, mkd. /X/ brs. N 55 20'E. 3.8 vrs. This stone is set in glads. Country broken.

56

1909

Borden-Dawson
County Line.

April 16 1909.

W/L

797

counter 50158

5/ Borden & Dawson

5/26/08

Borden Co Bdry Line 5
See also Map K-7-49 a, b, c

See Cor. Tm^s filed
4/16/09

The State of Texas }
County of Borden }

I Rodway Keen, Clerk of the County Court of Borden County Texas do hereby certify that the above and foregoing instrument of writing is a true and correct copy of the original as the same appears of record in my office in the Minutes of the County Court, Volume 1 at page 180 to 185 respectively.
Given under my hand and seal of office this 23rd day of June A. D. 1908.

Rodway Keen
Clerk of the County Court of
Borden County Texas.

BY Lily Fields
Deputy Clerk.

Survey finished 26th day of May, 1908.

J. A. Orr |
 |
Z. Robinson | Chainmen or Chain-Carriers.

D.B. Tucker |
 |
Morris Lane | Rod Men.

We, W.S. McClung, Special Surveyor for County Boundaries Borden Co. and Byron Barnes, Special Surveyor for County Boundaries Dawson Co. Do hereby certify that the foregoing survey was made by us in the field and on the ground according to law with the chainmen and rodmen duly qualified and that the limits, boundaries, and corners with, natural and artificial, & marks are truly and correctly described and set forth in the foregoing field notes and plat accompanying same.

Given under our hands this 12th day of June, 1908.

W.S. McClung Special Surveyor for County
 Boundaries Borden County
 State of Texas.

Byron Barnes Special Surveyor for County
 Boundaries Dawson County
 State of Texas.

I, T.H. Seay District Surveyor for Howard Land District do hereby certify that I have examined the foregoing field notes and find them correct.

T. H. Seay
District Surveyor Howard Land Dist.

Thence S. crossing hill, At 1900.8 vrs. set stone mkd. on E. face W.L.B.C.
25 M. on W. face, E.L.D.C. 25 M. From wh. Wind-mill brs. S. 76 W.
25th Mile Point of bluff brs. N. 20 E. This stone is on West slope of hill and
a short distance East from a windmill. Broken and rolling country.

Thence S. through prairie, at 1900.8 vrs. set stone mkd. on E. face
26th Mile W.L.B.C. 26 M. on W face E.L.D.C. 26 M. From wh. mes. 5" dia. mkd.
X// brs. N 22 30' W. 13.3 vrs. Double mes 5" dia mkd. X// brs. N. 82
30' W. 14 vrs. This stone is in open prairie, Few mes. Soil firm.

Thence S. through open prairie, at 1900.8 vrs. set stone mkd. on E.
27th Mile face W.L.B.C. 27 M. on W face E.L.D.C. 27 M. From wh. wind-mill brs.
S. 10 14' W. Wind-mill brs. S. 44 15' E. This stone is in open
prairie. Soil dark and firm. No timber.

Thence S. through open prairie, at 1900.8 vrs. Set stone mkd on E face
28th Mile W.L.B.C. 28M. on W. face E.L.D.C. 28 M. From wh. wind-mill brs.N.
33 19' W. A Wind-mill brs. S. 44 28' E. This stone is in open prairie,
Soil dark and firm. No timber.

Thence S. through open prairie, at 1900.8 vrs. set stone mkd. on E.
29th Mile face W.L.B.C. 28 M. On W. face Mkd. E.L.D.C. 29 M. From wh. wind-
mill brs. S. 3 35' W. Wind-mill brs. N. 72 30' W. This stone is in
open prairie. Soil dark and firm. No timber.

Thence S. through open prairie, pass just East of Mr. Childress house
At 1900.8 vrs. reach the S.W. Corner of Borden County, the same being the
N.W. Corner of Howard County, and the S. E. Corner of Dawson County.
Said corner being a stone 2ft X 2ft X 4ft, and placed in a pit 3" above
30th Mile level of the surface of the ground. Across said stone two straight lines
are cut N&S. E&W. and intersect at right angles at center of said stone.
The S. E. Quarter ^{mkd} N.W.H.Co. The N.E. quarter mkd. S.W.B.C.O. The N.W.
mkd. S.E.D.C.O. From wh. a stone brs. S. 100 vrs. Another stone brs. N.
100 vrs. Mes 6" dia mkd X C M W J C brs S 46 15'E. 48.5 vrs A wind-mill
18' 50" Stone o mkd X// The other April 21, 1908. 188.8 vrs
brs. N. 7 47' W. South wind-mill at tank brs. S. 76 37'E. N. wind-mill
at same tank brs. S. 77 14' E.

18th
Mile

Thence S. cross over point of bluff, 1900.8 vrs. set stone mkd. on E. face W.L.B.C. 18 M. On W. face mkd. E.L.D.C. 18M. From wh. point of bluff brs. N. 2 13' W. Point of bluff brs. S. 2 14' E. This stone is set in the cove of canyon.

19th
Mile

Thence S. Ascend point of bluff. Pass on to plains, At 1900.8 vrs. set stone mkd on E. face W.L.B.C. 19 M. on E. face E. L.D.C. 19M. From wh. point of bluff brs. S. 84 30' E. Point of bluff brs. S. 49 40' E. This stone is set in open prairie, Soil firm. Very little timber.

20th
Mile

Thence S. at 940 vrs. intersect connecting line from the one-half corner survey No. 45, Blk. 33, Tsp 5 North, at which point said one-half corner brs. S. 75 15' W. 95 vrs. (Said one-half corner being a stone mound and an old cedar stake mkd. N X X X II, 111½ W.)
At 1900.8 vrs. set stone mkd. on E. face W. L.B.C. 20M. on W. face mkd. E.L.D.C. 20 M. From wh. a cedar on point of hill brs. S. 12 4' E. Point of hill brs. S. 22 W. This stone is near E. bank of ravine and on W. slope of hill.

21st
Mile

Thence S. passing over draw and hill. descend same. at 1900.8 vrs set stone mkd on W. face E.L.D.C. 21 M. on E. face W.L.B.C. 21 M. From wh. mes. 3" dia mkd. X// brs. S. 10.2 vrs. Mes 4" dia mkd. X// brs. S. 16 30' W. 16.9 vrs. This stone is set in mes. flat. Soil firm.

22nd
Mile

Thence S. through mes. flat. Crossing Creek, At 1900.8 vrs. Set stone mkd. on E. face W.L.B.C. 22 M. on W. face E.L.D.C. 22M. From wh. clump of brush on point brs. S. 30'E. Clump of brush on point brs. S. 18 18' W. This stone is set in mes. flat. Soil firm. and red, Mes. timber young.

23rd
Mile

Thence S. at 1450 vrs. cross Colorado River. Ascend Long slope, 1900.8 vrs. set stone mkd. on E. face W.L.B.C. 23 M. on W. face E.L.D.C. 23 M. From wh. brush on point brs. S. 88 30' E. Bush on hill brs. S. 17 E/ This stone is in breaks near ravine.

24th
Mile

Thence S. Ascend hill, cross several short draws. at 1900.8 vrs. Set stone mkd. on E. face W.L.B.C. 24 M. On W face E.L.D.C. 24 M. From wh. mes. 4" dia. mkd. X// brs S. 41 W. 83.4 vrs. This stone is on West slope of hill and near the bottom.

Thence S. crossing hkbry draw, 1900.8 vrs. set stone mkd. on E. face
10th W.L.B.C. 10 M. on W. face mkd. E.L.D.C. 10 M. From wh. rocky point
Mile brs. S. 74 22' E. Rock on side of hill brs. N. 17 22' E.
This stone is set in prairie. Few mes. Soil firm.

Thence S. through mes. flat, 1900.8 vrs. set stone mkd. on E. face
11th W.L.B.C. 11 M. on W. face E.L.D.C. 11M. From wh. rock on bluff brs.
Mile N. 87 5' E. Rock on bluff brs. N. 56 32' E. Soil firm Young Mes. timber.

Thence S. at 767 vrs. to the T & P Reservation Line, at which point
12th the N. E. Corner of survey No. 3, Blk. No. 33, Esph, 5 North brs. S.
Mile 76 8' W. 1900.8 vrs. set sand stone on E. face W.L.B.C. 12M. on W. face
mkd. E.L.D.C. 12M. From wh. point of bluff brs. N. 86 20' E. point of
bluff brs. N. 31 30' E. Soil firm.

Thence
Thence S. over hill 1900.8 vrs. set stone mkd. on E. face W.L.B.C. 13M.
13th On W. face E.L.D.C. 13 M. From wh. point of bluff brs. S. 20 11' W.
Mile Point of bluff brs. S. 37 33' W. This stone is set 60 vrs. N. of
Tobacco Creek.

Thence S. 60 vrs. reach N. bank of Tobacco Creek, passing over hill
14th at 1900.8 vrs. set stone mkd. on E. face W.L.B.C. 14 M. on W. face
Mile mkd. E.L.D.C. 14 M. From wh. DeCordova Peak brs. S. 87 30' E. Red top
House brs. N. 63 5' E. This stone is set on the side of a hill.

Thence S. through broken prairie, 1900.8 vrs. set stone mkd. on E. face
W.L.B.C. 15 M. On W face E.L.D.C. 15 M. From wh. West point of red top
15th house brs. N. 37 21' E. DeCordova Peak brs. S. 86 20' E. This stone
Mile is set in prairie, Young mes. timber.

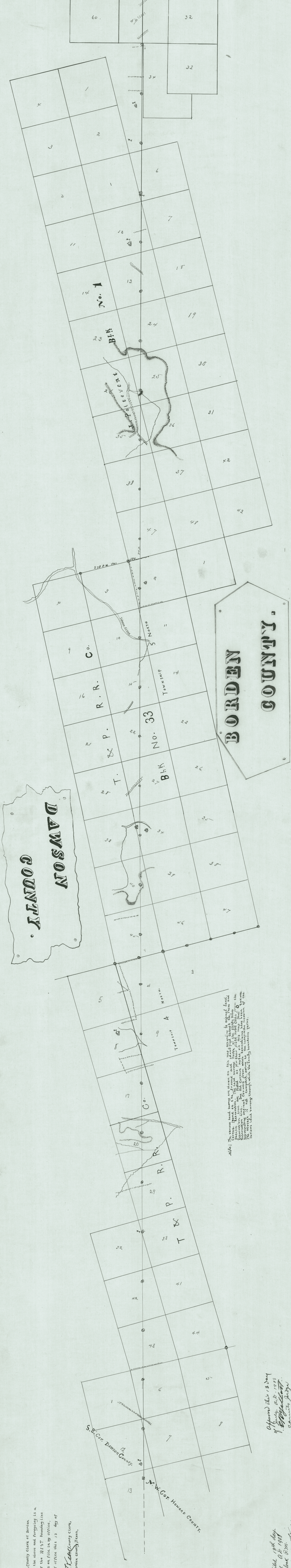
Thence S. through broken prairie and scattering mes. timber, 1900.8
vrs. set stone mkd. on E. face W.L.B.C. 16 M. on W. face E.L.D.C. 16M.
16th From wh. DeCordova Peak brs. S. 89 30' E. Red Top house brs. N. 32 3' E.
Mile This stone is set in prairie, Few mes.

Thence S. Crossing San Creek, Ascend slope, Passing through field,
17th At 1900.8 vrs. set stone mkd. on E. face W.L.B.C. 17 M. on W. face E.L.
Mile D.C. 17 M. From wh. point of bluff brs. S. 11 45' W. Point of bluff
brs. S. 26 40' W. This stone is set on West side of slope and near
W.O. Christophers house.

MILNE BROTHERS & LITTLE DENZON CO
BOBDEM CO

MAP OF WEST LINE BORDEN COUNTY AND EAST LINE DAWSON COUNTY.

Scale. 800 YARDS to the Inch.



The State of Texas }
 County of Borden } I, Rodney Keen, County Clerk of Borden
 County, Texas, do hereby certify that the above and foregoing is a
 true and correct copy of the plat of the WEST boundary line
 of Borden County, as the same appears on file in my office,
 given under my hand and seal of office this 13 day of
 July 1908.
 Rodney Keen, County Clerk,
 Borden County, Texas.

The State of Texas }
 County of Borden }
 County of Dawson }
 I, W. S. McClung, Special Surveyor for County Boundary,
 Dawson County, Texas, do hereby certify that the foregoing map is a correct
 and true copy of the plat of the WEST boundary line of Borden County and East
 boundary line of Dawson County, as the same appears on file in my office,
 given under my hand and seal of office this 12 day of June 1908.
 W. S. McClung, Special Surveyor for County Boundary,
 Dawson County, Texas.

NOTE: The various landmarks shown on this map, including the original land
 corners found on the ground, are marked with the following letters and
 numbers: A, B, C, D, E, F, G, H, I, J, K, L, M, N, O, P, Q, R, S, T, U, V, W, X, Y, Z,
 1, 2, 3, 4, 5, 6, 7, 8, 9, 10, 11, 12, 13, 14, 15, 16, 17, 18, 19, 20, 21, 22, 23, 24,
 25, 26, 27, 28, 29, 30, 31, 32, 33, 34, 35, 36, 37, 38, 39, 40, 41, 42, 43, 44,
 45, 46, 47, 48. The letters and numbers are placed as permanent marks on the
 ground, and are not to be removed or altered in any way. The original
 survey was made by me, W. S. McClung, on the 12th day of June 1908.
 The original plat is on file in my office, and a copy of the same is
 being furnished to you for your records.

Approved this 13 day
 of July A.D. 1908
 Rodney Keen
 County Clerk
 Borden County, Texas.

Filed 13th day
 of July A.D. 1908
 W. S. McClung
 Special Surveyor for County Boundary
 Dawson County, Texas.

W. S. McClung
 Special Surveyor for County Boundary
 Dawson County, Texas.